

Converting Colors

CIELCh(58, 72.259, 15.841)

Have a look what the booklet for
CIELCh(58, 72.259, 15.841) contains.

CIELCh(58, 72.273, 15.932)	3
<i>Conversions</i>	4
<i>Details</i>	6
<i>Harmonies</i>	11
<i>Previews</i>	20
<i>Color Blindness Simulation</i>	23
<i>CSS Examples</i>	26

Color

CIELCh(58, 72.273, 15.932)

Conversions

Conversions Part 1

Format	Color
Hex	FB476D
RGB	251, 71, 109
RGB Percent	98%, 28%, 43%
CMY	0.0176, 0.7234, 0.5740
CMYK	0.00, 0.72, 0.57, 0.02
HSL	347°, 95%, 63%
HSV	347°, 72%, 98%
XYZ	44.5734, 25.9610, 17.0252
YIQ	129.1520, 95.0820, 49.9780

Conversions

Conversions Part 2

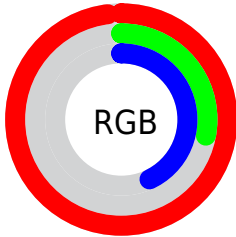
Format	Color
R_{YB}	251, 71, 109
Decimal	16467821
CIE _{Lab}	58.00, 69.50, 19.84
CIE _{LCh}	58, 72.273, 15.932
Yxy	25.9610, 0.5091, 0.2965
Android (android.graphics.Color)	4294657901 (0xFFFB476D)
YUV	129.1520, -9.9349, 106.8607
Hunter-Lab	50.9519, 66.9881, 15.8550

Details

The CIELCh color **58, 72.273, 15.932** is a dark color, and the websafe version is hex **FF3366**. The color can be described as middle washed rose. A complement of this color would be **89, 53.625, 174.257**, and the grayscale version is **54, 0.007, 296.813**.

A 20% lighter version of the original color is **69, 50.348, 7.449**, and **40, 68.848, 18.451** is the 20% darker color. If you saturate the color by 10%, you get **55, 80.292, 20.186**, and if you desaturate by 10%, it is **62, 63.032, 12.534**.

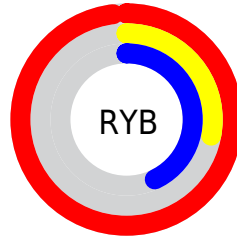
Distribution



Red (98%)

Green (28%)

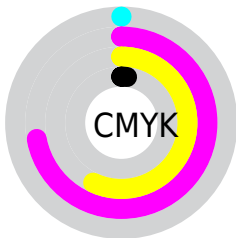
Blue (43%)



Red (98%)

Yellow (28%)

Blue (43%)

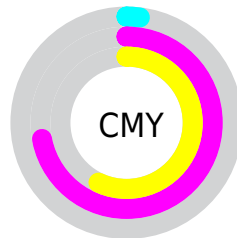


Cyan (0%)

Magenta (72%)

Yellow (57%)

Black (2%)



Cyan (2%)

Magenta (72%)

Yellow (57%)

Brightness & Saturation Gradients

These gradients show how the CIELCh color 58, 72.273, 15.932 changes by changing the brightness by 10 percent. The first figure shows a shift by +10% for each color and the second figure -10%.

Similar to the brightness gradients but the following saturation gradients show a change of the CIELCh color 58, 72.273, 15.932 by changing the saturation by 10% instead.

 58, 72.273, 15.932

 58, 72.273, 15.932

 100, 72.273,
15.932

 48, 72.273, 15.932

 78, 72.273, 15.932

 38, 72.273, 15.932

 88, 72.273, 15.932

 28, 72.273, 15.932

 98, 72.273, 15.932

 18, 72.273, 15.932

 8, 72.273, 15.932

 0, 72.273, 15.932

 58, 72.273, 15.932

 58, 72.273, 15.932

 55, 80.292, 20.186

 62, 63.032, 12.534

 53, 87.040, 25.269

 67, 52.912, 9.856

53, 91.882, 29.690

72, 42.342, 7.737

78, 31.709, 6.036

84, 21.293, 4.640

91, 11.267, 3.459

97, 1.715, 2.181

100, 1.556,
199.732

Harmonies

Complementary

The Complementary color scheme is a pair of colors which are on the opposite of each other on the color wheel.



58, 72.273, 15.932



89, 53.625, 174.257

Rectangle

The Rectangle color scheme consists of four colors that form a rectangle on the color wheel.



58, 72.273, 15.932



58, 72.273, 65.932



58, 72.273, 195.932



58, 72.273, 245.932

Sweetspot

The Sweet Spot groups the original color and five complimentary colors.



58, 72.269, 15.934



85, 21.760, 4.662



57, 100.493, 320.842



44, 14.712, 5.017



0, 0.000, 0.000



53, 0.007, 296.813

Same Dimension

The Same Dimension uses a secret algorithm to generate beautiful new colors.



58, 72.269, 15.934



55, 84.422, 22.247



65, 67.930, 47.493



49, 5.362, 3.200



39, 73.601, 28.651



9, 30.935, 17.196

Inverse Universe

The Inverse Universe completely reimagines the original color for something new.



58, 72.269, 15.934



55, 84.422, 22.247



76, 40.042, 241.625



49, 5.362, 3.200



39, 73.601, 28.651



9, 30.935, 17.196

Previews

White Background



This preview shows how the CIELCh color 58, 72.273, 15.932 looks on a white background.

Color Contrast Check

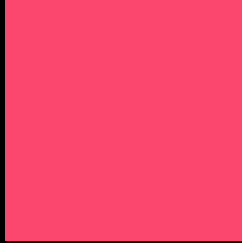
Large Text (above 18pt) WCAG AA ✓ Pass

Any Text WCAG AA ✗ Fail

Large Text (above 18pt) WCAG AAA ✗ Fail

Any Text WCAG AAA ✗ Fail

Black Background



This preview shows how the CIELCh color 58, 72.273, 15.932 looks on a black background.

Color Contrast Check

Large Text (above 18pt) WCAG AA ✓ Pass

Any Text WCAG AA ✓ Pass

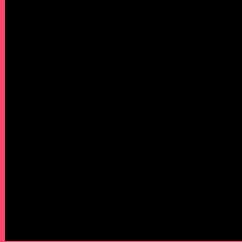
Large Text (above 18pt) WCAG AAA ✓ Pass

Any Text WCAG AAA × Fail

If you want to check with other color combinations, try the [Color Contrast Checker](#).

CIELCh 58, 72.273, 15.932

Background



This preview shows how black text looks on a background with the CIELCh color 58, 72.273, 15.932.

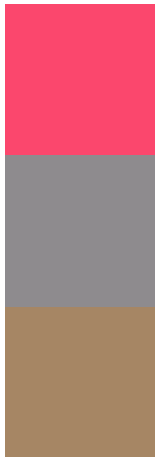


This preview shows how white text looks on a background with the CIELCh color 58, 72.273, 15.932.

Color Blindness Simulation

Color vision deficiency is a very complex topic, and I could not describe the different causes any better than Wikipedia does, so if you want to learn more, you should check out their [article about color blindness](#).

Dichromacy



Original Color

58, 72.273, 15.932

Protanopia

58, 2.083, 324.458

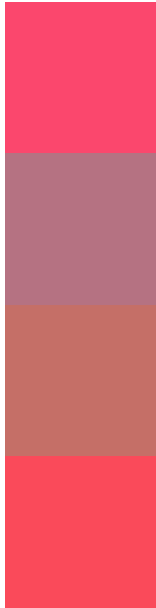
Deuteranopia

58, 24.090, 72.081



Tritanopia
58, 74.854, 29.004

Trichromacy



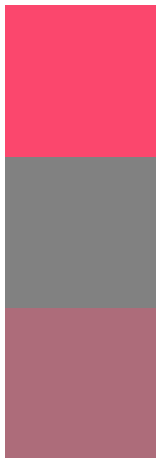
Original Color
58, 72.273, 15.932

Protanomaly
56, 28.682, 4.723

Deuteranomaly
56, 38.376, 30.409

Tritanomaly
58, 73.699, 24.613

Monochromacy



Original Color
58, 72.273, 15.932

Achromatopsia
54, 0.007, 296.813

Achromatomaly
53, 27.945, 6.540

CSS Examples

Text

The CSS property to change the color of the text to CIELCh 58, 72.273, 15.932 is called "color". The color property can be set on classes, ids or directly on the HTML element.

This example shows how text in the color `rgb(251, 71, 109)` looks like.

```
.text, #text, p{  
    color:rgb(251, 71, 109)  
}
```

If you want to add a text shadow in that color use the text-shadow property, you can generate a text shadow directly with our [CSS Text Shadow Generator](#).

Here you see how black text with a 4 pixel rgb(251, 71, 109) colored shadow looks like.

```
.shadow{ text-shadow: 4px 4px 2px rgb(251, 71, 109) }
```

Border

The CSS property to change the border of an element to CIELCh 58, 72.273, 15.932 is called "border". The border property can be set on classes, ids or directly on the HTML element.

This example shows the color as border, it can be applied via the CSS property "border" or "border-color".

```
.border, #border, table{ border:4px solid rgb(251, 71, 109) }
```

If only the border color should be changed use the property `border-color`.

```
.border{ border-color:rgb(251, 71, 109) }
```

If you want to add a box shadow in that color use:

Here you see how a box with a 4 pixel `rgb(251, 71, 109)` colored shadow looks like.

```
.boxshadow{ -moz-box-shadow:4px 4px 4px  
4px rgb(251, 71, 109); -webkit-box-  
shadow:4px 4px 4px 4px rgb(251, 71, 109);  
box-shadow:4px 4px 4px 4px rgb(251, 71,  
109) }
```

Background

The CSS property to change the background color of an element to CIELCh 58, 72.273, 15.932 is called "background". The background property can be set on classes, ids or directly on the HTML element.

```
.background, #background, body{  
background: rgb(251, 71, 109) }
```

If only the background color should be changed can be used:

```
.background{ background-color: rgb(251, 71,  
109) }
```

This example shows the color as background, it is applied via the CSS property "background".

To optimize and compress your CSS code, you can use our [online CSS compressor and optimizer](#) based on csstidy. If you want to create a linear or radial gradient as background or border, check our [CSS Gradient Generator](#).

Hey! You found this booklet interesting? Support Converting Colors with the new Membership Option!

The pro membership hides all ads, plus gives you double the colors in the color bucket, and more awesome pro features!

[Learn more, Memberships starting at \\$2.50/m!](#)

**Follow me
on Twitter!**

@ConvertingColor