

Converting Colors

CIELCh(58, 74.909, 9.493)

Have a look what the booklet for
CIELCh(58, 74.909, 9.493) contains.

CIELCh(58, 74.788, 9.776)	3
<i>Conversions</i>	4
<i>Details</i>	6
<i>Harmonies</i>	11
<i>Previews</i>	20
<i>Color Blindness Simulation</i>	23
<i>CSS Examples</i>	26

Color

CIELCh(58, 74.788, 9.776)

Conversions

Conversions Part 1

Format	Color
Hex	FE3F79
RGB	254, 63, 121
RGB Percent	100%, 25%, 47%
CMY	0.0045, 0.7535, 0.5259
CMYK	0.00, 0.75, 0.52, 0.00
HSL	342°, 99%, 62%
HSV	342°, 75%, 100%
XYZ	46.0366, 25.9610, 20.6390
YIQ	126.7210, 95.2180, 58.5300

Conversions

Conversions Part 2

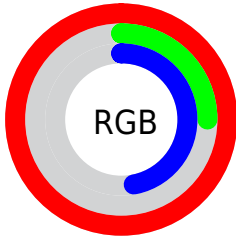
Format	Color
R_{YB}	254, 63, 121
Decimal	16662393
CIE Lab	58.00, 73.70, 12.70
CIE LCh	58, 74.788, 9.776
Yxy	25.9610, 0.4970, 0.2802
Android (android.graphics.Color)	4294852473 (0xFFFE3F79)
YUV	126.7210, -2.8205, 111.6237
Hunter-Lab	50.9519, 72.1143, 11.6499

Details

The CIELCh color **58, 74.788, 9.776** is a dark color, and the websafe version is hex **FF3366**. The color can be described as middle washed rose. A complement of this color would be **90, 61.250, 166.196**, and the grayscale version is **53, 0.007, 296.813**.

A 20% lighter version of the original color is **69, 53.872, 358.249**, and **41, 68.515, 13.530** is the 20% darker color. If you saturate the color by 10%, you get **55, 81.072, 14.079**, and if you desaturate by 10%, it is **62, 66.820, 6.368**.

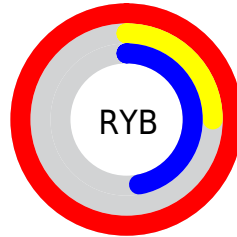
Distribution



Red (100%)

Green (25%)

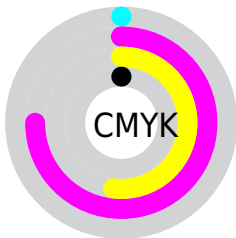
Blue (47%)



Red (100%)

Yellow (25%)

Blue (47%)

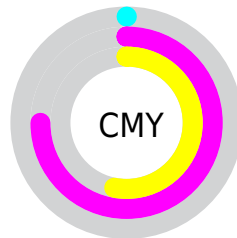


Cyan (0%)

Magenta (75%)

Yellow (52%)

Black (0%)



Cyan (0%)

Magenta (75%)

Yellow (53%)

Brightness & Saturation Gradients

These gradients show how the CIELCh color 58, 74.788, 9.776 changes by changing the brightness by 10 percent. The first figure shows a shift by +10% for each color and the second figure -10%.

Similar to the brightness gradients but the following saturation gradients show a change of the CIELCh color 58, 74.788, 9.776 by changing the saturation by 10% instead.

 58, 74.788, 9.776

 58, 74.788, 9.776

 100, 74.788, 9.776

 48, 74.788, 9.776

 78, 74.788, 9.776

 38, 74.788, 9.776

 88, 74.788, 9.776

 28, 74.788, 9.776

 98, 74.788, 9.776

 18, 74.788, 9.776

 8, 74.788, 9.776

 0, 74.788, 9.776

 58, 74.788, 9.776

 58, 74.788, 9.776

 55, 81.072, 14.079

 62, 66.820, 6.368

 54, 85.800, 19.319

 66, 57.475, 3.686

■ 54, 87.812, 21.992

■ 71, 47.232, 1.555

■ 77, 36.566,
359.830

■ 83, 25.850,
358.400

■ 90, 15.334,
357.183

■ 96, 5.166, 356.076

■ 100, 0.395,
201.058

Harmonies

Complementary

The Complementary color scheme is a pair of colors which are on the opposite of each other on the color wheel.



58, 74.788, 9.776



90, 61.250, 166.196

Rectangle

The Rectangle color scheme consists of four colors that form a rectangle on the color wheel.



58, 74.788, 9.776



58, 74.788, 59.776



58, 74.788, 189.776



58, 74.788, 239.776

Sweetspot

The Sweet Spot groups the original color and five complimentary colors.



58, 74.784, 9.778



85, 23.558, 358.112



54, 105.158, 317.742



43, 16.399, 358.583



0, 0.000, 0.000



53, 0.007, 296.813

Same Dimension

The Same Dimension uses a secret algorithm to generate beautiful new colors.



58, 74.784, 9.778



55, 83.785, 16.475



62, 76.332, 40.980



50, 5.677, 356.549



40, 70.554, 20.917



10, 31.445, 12.481

Inverse Universe

The Inverse Universe completely reimagines the original color for something new.



58, 74.784, 9.778



55, 83.785, 16.475



81, 40.388, 224.980



50, 5.677, 356.549



40, 70.554, 20.917



10, 31.445, 12.481

Previews

White Background



This preview shows how the CIELCh color 58, 74.788, 9.776 looks on a white background.

Color Contrast Check

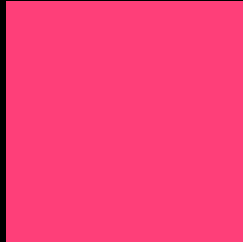
Large Text (above 18pt) WCAG AA ✓ Pass

Any Text WCAG AA ✗ Fail

Large Text (above 18pt) WCAG AAA ✗ Fail

Any Text WCAG AAA ✗ Fail

Black Background



This preview shows how the CIELCh color 58, 74.788, 9.776 looks on a black background.

Color Contrast Check

Large Text (above 18pt) WCAG AA ✓ Pass

Any Text WCAG AA ✓ Pass

Large Text (above 18pt) WCAG AAA ✓ Pass

Any Text WCAG AAA × Fail

If you want to check with other color combinations, try the [Color Contrast Checker](#).

CIELCh 58, 74.788, 9.776

Background



This preview shows how black text looks on a background with the CIELCh color 58, 74.788, 9.776.



This preview shows how white text looks on a background with the CIELCh color 58, 74.788, 9.776.

Color Blindness Simulation

Color vision deficiency is a very complex topic, and I could not describe the different causes any better than Wikipedia does, so if you want to learn more, you should check out their [article about color blindness](#).

Dichromacy



Original Color

58, 74.788, 9.776

Protanopia

58, 12.530, 286.615

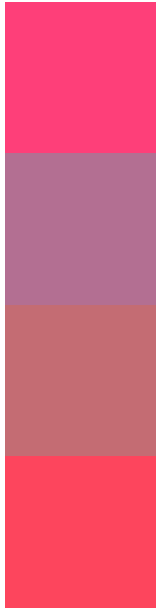
Deuteranopia

58, 17.760, 64.263



Tritanopia
58, 77.395, 29.608

Trichromacy



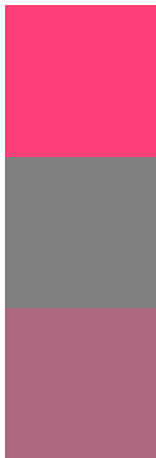
Original Color
58, 74.788, 9.776

Protanomaly
55, 32.830, 346.475

Deuteranomaly
56, 37.455, 18.226

Tritanomaly
58, 75.539, 22.599

Monochromacy



Original Color
58, 74.788, 9.776

Achromatopsia
53, 0.007, 296.813

Achromatomaly
52, 30.409, 0.390

CSS Examples

Text

The CSS property to change the color of the text to CIELCh 58, 74.788, 9.776 is called "color". The color property can be set on classes, ids or directly on the HTML element.

This example shows how text in the color `rgb(254, 63, 121)` looks like.

```
.text, #text, p{  
    color:rgb(254, 63, 121)  
}
```

If you want to add a text shadow in that color use the text-shadow property, you can generate a text shadow directly with our [CSS Text Shadow Generator](#).

Here you see how black text with a 4 pixel rgb(254, 63, 121) colored shadow looks like.

```
.shadow{ text-shadow: 4px 4px 2px rgb(254, 63, 121) }
```

Border

The CSS property to change the border of an element to CIELCh 58, 74.788, 9.776 is called "border". The border property can be set on classes, ids or directly on the HTML element.

This example shows the color as border, it can be applied via the CSS property "border" or "border-color".

```
.border, #border, table{ border:4px solid rgb(254, 63, 121) }
```

If only the border color should be changed use the property border-color.

```
.border{ border-color:rgb(254, 63, 121) }
```

If you want to add a box shadow in that color use:

Here you see how a box with a 4 pixel rgb(254, 63, 121) colored shadow looks like.

```
.boxshadow{ -moz-box-shadow:4px 4px 4px  
4px rgb(254, 63, 121); -webkit-box-  
shadow:4px 4px 4px 4px rgb(254, 63, 121);  
box-shadow:4px 4px 4px 4px rgb(254, 63,  
121) }
```

Background

The CSS property to change the background color of an element to CIELCh 58, 74.788, 9.776 is called "background". The background property can be set on classes, ids or directly on the HTML element.

```
.background, #background, body{  
background: rgb(254, 63, 121) }
```

If only the background color should be changed can be used:

```
.background{ background-color: rgb(254, 63,  
121) }
```

This example shows the color as background, it is applied via the CSS property "background".

To optimize and compress your CSS code, you can use our [online CSS compressor and optimizer](#) based on csstidy. If you want to create a linear or radial gradient as background or border, check our [CSS Gradient Generator](#).

Hey! You found this booklet interesting? Support Converting Colors with the new Membership Option!

The pro membership hides all ads, plus gives you double the colors in the color bucket, and more awesome pro features!

[Learn more, Memberships starting at \\$2.50/m!](#)

**Follow me
on Twitter!**

@ConvertingColor