

Converting Colors

CIELCh(59, 16.764, 67.739)

Have a look what the booklet for
CIELCh(59, 16.764, 67.739) contains.

CIELCh(59, 16.759, 67.399)	3
<i>Conversions</i>	4
<i>Details</i>	6
<i>Harmonies</i>	11
<i>Previews</i>	20
<i>Color Blindness Simulation</i>	23
<i>CSS Examples</i>	26

Color

CIELCh(59, 16.759, 67.399)

Conversions

Conversions Part 1

Format	Color
Hex	A38973
RGB	163, 137, 115
RGB Percent	64%, 54%, 45%
CMY	0.3597, 0.4617, 0.5480
CMYK	0.00, 0.16, 0.29, 0.36
HSL	28°, 21%, 55%
HSV	28°, 29%, 64%
XYZ	27.2553, 27.0277, 20.0787
YIQ	142.2660, 22.5580, -1.3300

Conversions

Conversions Part 2

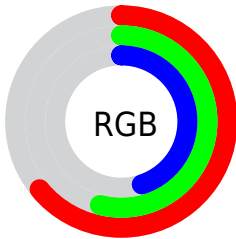
Format	Color
R_{YB}	163, 156, 115
Decimal	10717555
CIE _{Lab}	59.00, 6.44, 15.47
CIE _{LCh}	59, 16.759, 67.399
Yxy	27.0277, 0.3665, 0.3635
Android (android.graphics.Color)	4288907635 (0xFFA38973)
YUV	142.2660, -13.4421, 18.1837
Hunter-Lab	51.9882, 2.6008, 13.4930

Details

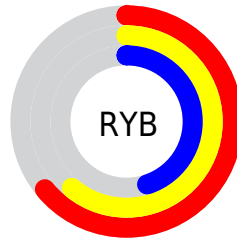
The CIELCh color **59, 16.759, 67.399** is a dark color, and the websafe version is hex **999999**. A complement of this color would be **58, 15.155, 255.114**, and the grayscale version is **59, 0.008, 296.813**.

A 20% lighter version of the original color is **79, 16.846, 66.224**, and **39, 16.515, 67.185** is the 20% darker color. If you saturate the color by 10%, you get **56, 23.074, 66.274**, and if you desaturate by 10%, it is **62, 10.767, 68.540**.

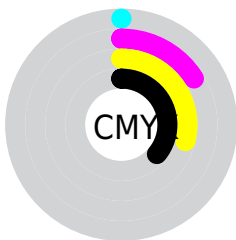
Distribution



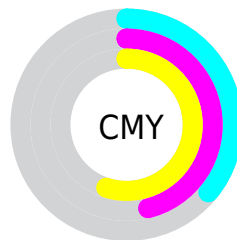
- Red (64%)
- Green (54%)
- Blue (45%)



- Red (64%)
- Yellow (61%)
- Blue (45%)



- Cyan (0%)
- Magenta (16%)
- Yellow (29%)
- Black (36%)



- Cyan (36%)
- Magenta (46%)
- Yellow (55%)

Brightness & Saturation Gradients

These gradients show how the CIELCh color 59, 16.759, 67.399 changes by changing the brightness by 10 percent. The first figure shows a shift by +10% for each color and the second figure -10%.

Similar to the brightness gradients but the following saturation gradients show a change of the CIELCh color 59, 16.759, 67.399 by changing the saturation by 10% instead.

■ 59, 16.759, 67.399

■ 59, 16.759, 67.399

■ 100, 16.759,
67.399

■ 49, 16.759, 67.399

■ 79, 16.759, 67.399

■ 39, 16.759, 67.399

■ 89, 16.759, 67.399

■ 29, 16.759, 67.399

■ 99, 16.759, 67.399

■ 19, 16.759, 67.399

■ 9, 16.759, 67.399

■ 0, 16.759, 67.399

■ 59, 16.759, 67.399

■ 59, 16.759, 67.399

■ 56, 23.074, 66.274

■ 62, 10.767, 68.540

■ 54, 29.706, 65.147

■ 64, 5.083, 69.647

51, 36.606, 64.017

67, 0.318, 251.932

49, 43.644, 62.843

70, 5.462, 252.023

47, 50.523, 61.524

73, 10.378,
253.080

45, 56.669, 59.840

76, 15.092,
254.125

43, 61.744, 57.768

43, 62.068, 57.674

79, 19.627,
255.139

82, 24.005,
256.117

84, 25.429,
251.332

Harmonies

Complementary

The Complementary color scheme is a pair of colors which are on the opposite of each other on the color wheel.



59, 16.759, 67.399



58, 15.155, 255.114

Rectangle

The Rectangle color scheme consists of four colors that form a rectangle on the color wheel.



59, 16.759, 67.399



59, 16.759, 117.399



59, 16.759, 247.399



59, 16.759, 297.399

Sweetspot

The Sweet Spot groups the original color and five complimentary colors.



59, 16.759, 67.407



82, 6.001, 69.673



54, 24.100, 343.564



43, 4.219, 69.523



93, 0.011, 296.813



45, 0.006, 296.813

Same Dimension

The Same Dimension uses a secret algorithm to generate beautiful new colors.



59, 16.759, 67.407



73, 25.055, 66.700



65, 25.007, 105.182



33, 3.053, 69.662



38, 56.854, 58.075



3, 4.561, 65.719

Inverse Universe

The Inverse Universe completely reimagines the original color for something new.



58, 15.155, 255.114



71, 22.113, 256.353



51, 26.620, 291.739



33, 2.972, 251.975



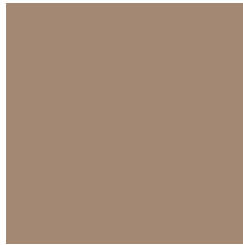
33, 42.901, 278.679



2, 4.825, 256.434

Previews

White Background



This preview shows how the CIELCh color 59, 16.759, 67.399 looks on a white background.

Color Contrast Check

Large Text (above 18pt) WCAG AA ✓ Pass

Any Text WCAG AA × Fail

Large Text (above 18pt) WCAG AAA × Fail

Any Text WCAG AAA × Fail

Black Background



This preview shows how the CIE LCh color 59, 16.759, 67.399 looks on a black background.

Color Contrast Check

Large Text (above 18pt) WCAG AA ✓ Pass

Any Text WCAG AA ✓ Pass

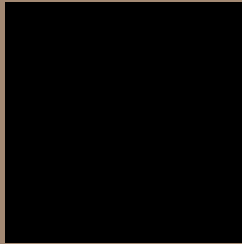
Large Text (above 18pt) WCAG AAA ✓ Pass

Any Text WCAG AAA × Fail

If you want to check with other color combinations, try the [Color Contrast Checker](#).

CIELCh 59, 16.759, 67.399

Background



This preview shows how black text looks on a background with the CIELCh color 59, 16.759, 67.399.



This preview shows how white text looks on a background with the CIELCh color 59, 16.759, 67.399.

Color Blindness Simulation

Color vision deficiency is a very complex topic, and I could not describe the different causes any better than Wikipedia does, so if you want to learn more, you should check out their [article about color blindness](#).

Dichromacy



Original Color


59, 16.759, 67.399

Protanopia

59, 14.467, 95.164

Deuteranopia

59, 17.362, 65.308



Tritanopia
59, 14.470, 355.635

Trichromacy



Original Color
59, 16.759, 67.399

Protanomaly
59, 14.971, 83.608

Deuteranomaly
59, 17.057, 66.335

Tritanomaly
59, 12.234, 23.251

Monochromacy



Original Color
59, 16.759, 67.399

Achromatopsia
59, 0.008, 296.813

Achromatomaly
59, 5.777, 70.814

CSS Examples

Text

The CSS property to change the color of the text to CIELCh 59, 16.759, 67.399 is called "color". The color property can be set on classes, ids or directly on the HTML element.

This example shows how text in the color `rgb(163, 137, 115)` looks like.

```
.text, #text, p{  
    color:rgb(163, 137, 115)  
}
```

If you want to add a text shadow in that color use the text-shadow property, you can generate a text shadow directly with our [CSS Text Shadow Generator](#).

Here you see how black text with a 4 pixel rgb(163, 137, 115) colored shadow looks like.

```
.shadow{ text-shadow: 4px 4px 2px rgb(163, 137, 115) }
```

Border

The CSS property to change the border of an element to CIELCh 59, 16.759, 67.399 is called "border". The border property can be set on classes, ids or directly on the HTML element.

This example shows the color as border, it can be applied via the CSS property "border" or "border-color".

```
.border, #border, table{ border:4px solid rgb(163, 137, 115) }
```

If only the border color should be changed use the property `border-color`.

```
.border{ border-color:rgb(163, 137, 115) }
```

If you want to add a box shadow in that color use:

Here you see how a box with a 4 pixel `rgb(163, 137, 115)` colored shadow looks like.

```
.boxshadow{ -moz-box-shadow:4px 4px 4px  
4px rgb(163, 137, 115); -webkit-box-  
shadow:4px 4px 4px 4px rgb(163, 137, 115);  
box-shadow:4px 4px 4px 4px rgb(163, 137,  
115) }
```

Background

The CSS property to change the background color of an element to CIELCh 59, 16.759, 67.399 is called "background". The background property can be set on classes, ids or directly on the HTML element.

```
.background, #background, body{  
background: rgb(163, 137, 115) }
```

If only the background color should be changed can be used:

```
.background{ background-color: rgb(163,  
137, 115) }
```

This example shows the color as background, it is applied via the CSS property "background".

To optimize and compress your CSS code, you can use our [online CSS compressor and optimizer](#) based on csstidy. If you want to create a linear or radial gradient as background or border, check our [CSS Gradient Generator](#).

Hey! You found this booklet interesting? Support Converting Colors with the new Membership Option!

The pro membership hides all ads, plus gives you double the colors in the color bucket, and more awesome pro features!

[Learn more, Memberships starting at \\$2.50/m!](#)

**Follow me
on Twitter!**

@ConvertingColor