

Converting Colors

CIELCh(59, 17.055, 49.280)

Have a look what the booklet for
CIELCh(59, 17.055, 49.280) contains.

CIELCh(59, 16.819, 50.518)	3
<i>Conversions</i>	4
<i>Details</i>	6
<i>Harmonies</i>	11
<i>Previews</i>	20
<i>Color Blindness Simulation</i>	23
<i>CSS Examples</i>	26

Color

CIELCh(59, 16.819, 50.518)

Conversions

Conversions Part 1

Format	Color
Hex	A98778
RGB	169, 135, 120
RGB Percent	66%, 53%, 47%
CMY	0.3382, 0.4714, 0.5302
CMYK	0.00, 0.20, 0.29, 0.34
HSL	18°, 22%, 57%
HSV	18°, 29%, 66%
XYZ	28.3237, 27.0277, 21.4257
YIQ	143.4560, 25.0790, 2.5430

Conversions

Conversions Part 2

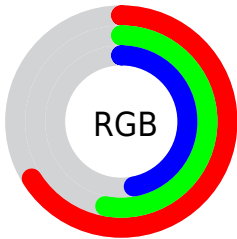
Format	Color
RYB	169, 142, 120
Decimal	11110264
CIELab	59.00, 10.69, 12.98
CIELCh	59, 16.819, 50.518
Yxy	27.0277, 0.3689, 0.3520
Android (android.graphics.Color)	4289300344 (0xFFA98778)
YUV	143.4560, -11.5638, 22.4021
Hunter-Lab	51.9882, 6.2694, 11.9568

Details

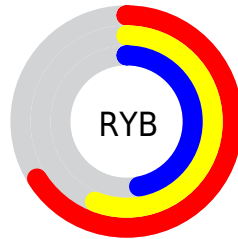
The CIELCh color $59, 16.819, 50.518$ is a dark color, and the websafe version is hex `CC9999`. A complement of this color would be $62, 14.203, 235.196$, and the grayscale version is $60, 0.008, 296.813$.

A 20% lighter version of the original color is $79, 16.939, 50.298$, and $39, 16.703, 49.027$ is the 20% darker color. If you saturate the color by 10%, you get $56, 23.494, 50.068$, and if you desaturate by 10%, it is $62, 10.615, 51.064$.

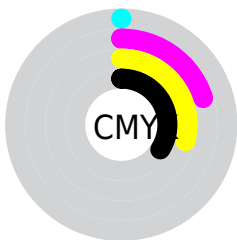
Distribution



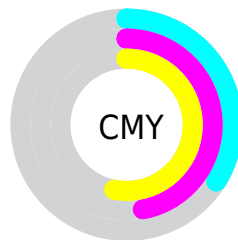
- Red (66%)
- Green (53%)
- Blue (47%)



- Red (66%)
- Yellow (56%)
- Blue (47%)



- Cyan (0%)
- Magenta (20%)
- Yellow (29%)
- Black (34%)



- Cyan (34%)
- Magenta (47%)
- Yellow (53%)

Brightness & Saturation Gradients

These gradients show how the CIELCh color 59, 16.819, 50.518 changes by changing the brightness by 10 percent. The first figure shows a shift by +10% for each color and the second figure -10%.

Similar to the brightness gradients but the following saturation gradients show a change of the CIELCh color 59, 16.819, 50.518 by changing the saturation by 10% instead.

■ 59, 16.819, 50.518

■ 59, 16.819, 50.518

■ 100, 16.819,
50.518

■ 49, 16.819, 50.518

■ 79, 16.819, 50.518

■ 39, 16.819, 50.518

■ 89, 16.819, 50.518

■ 29, 16.819, 50.518

■ 99, 16.819, 50.518

■ 19, 16.819, 50.518

■ 9, 16.819, 50.518

■ 0, 16.819, 50.518

■ 59, 16.819, 50.518

■ 59, 16.819, 50.518

■ 56, 23.494, 50.068

■ 62, 10.615, 51.064

■ 52, 30.653, 49.713

■ 66, 4.851, 51.636

49, 38.271, 49.470

70, 0.511, 233.263

46, 46.244, 49.318

73, 5.515, 233.179

44, 54.312, 49.162

77, 10.201,
233.861

42, 61.886, 48.751

80, 14.608,
234.574

39, 68.338, 47.962

39, 69.003, 47.957

84, 18.770,
235.291

88, 22.716,
236.002

91, 23.368,
217.458

Harmonies

Complementary

The Complementary color scheme is a pair of colors which are on the opposite of each other on the color wheel.



59, 16.819, 50.518



62, 14.203, 235.196

Rectangle

The Rectangle color scheme consists of four colors that form a rectangle on the color wheel.



59, 16.819, 50.518



59, 16.819, 100.518



59, 16.819, 230.518



59, 16.819, 280.518

Sweetspot

The Sweet Spot groups the original color and five complimentary colors.



59, 16.818, 50.526



84, 5.992, 51.628



56, 26.996, 336.341



44, 4.179, 51.550



94, 0.011, 296.813



46, 0.006, 296.813

Same Dimension

The Same Dimension uses a secret algorithm to generate beautiful new colors.



59, 16.818, 50.526



72, 25.740, 50.213



65, 21.948, 97.071



34, 3.039, 51.622



34, 62.351, 48.312



3, 5.426, 47.059

Inverse Universe

The Inverse Universe completely reimagines the original color for something new.



62, 14.203, 235.196



76, 20.786, 236.152



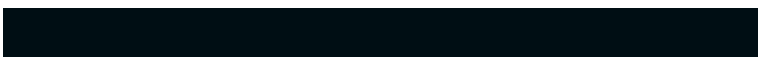
55, 22.683, 284.396



34, 2.896, 233.126



41, 32.670, 256.286



3, 5.425, 241.662

Previews

White Background



This preview shows how the CIELCh color 59, 16.819, 50.518 looks on a white background.

Color Contrast Check

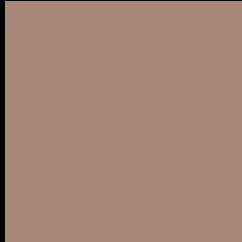
Large Text (above 18pt) WCAG AA ✓ Pass

Any Text WCAG AA × Fail

Large Text (above 18pt) WCAG AAA × Fail

Any Text WCAG AAA × Fail

Black Background



This preview shows how the CIE LCh color 59, 16.819, 50.518 looks on a black background.

Color Contrast Check

Large Text (above 18pt) WCAG AA ✓ Pass

Any Text WCAG AA ✓ Pass

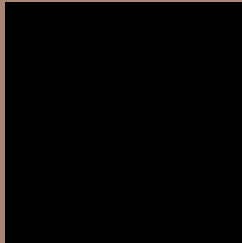
Large Text (above 18pt) WCAG AAA ✓ Pass

Any Text WCAG AAA × Fail

If you want to check with other color combinations, try the [Color Contrast Checker](#).

CIELCh 59, 16.819, 50.518

Background



This preview shows how black text looks on a background with the CIELCh color 59, 16.819, 50.518.



This preview shows how white text looks on a background with the CIELCh color 59, 16.819, 50.518.

Color Blindness Simulation

Color vision deficiency is a very complex topic, and I could not describe the different causes any better than Wikipedia does, so if you want to learn more, you should check out their [article about color blindness](#).

Dichromacy



Original Color


59, 16.819, 50.518

Protanopia

59, 11.084, 93.848

Deuteranopia

59, 15.378, 61.169



Tritanopia
59, 16.549, 1.395

Trichromacy



Original Color
59, 16.819, 50.518

Protanomaly
59, 11.959, 72.773

Deuteranomaly
59, 16.033, 56.783

Tritanomaly
59, 15.119, 18.858

Monochromacy



Original Color
59, 16.819, 50.518

Achromatopsia
59, 0.008, 296.813

Achromatomaly
59, 5.575, 50.079

CSS Examples

Text

The CSS property to change the color of the text to CIELCh 59, 16.819, 50.518 is called "color". The color property can be set on classes, ids or directly on the HTML element.

This example shows how text in the color `rgb(169, 135, 120)` looks like.

```
.text, #text, p{  
    color:rgb(169, 135, 120)  
}
```

If you want to add a text shadow in that color use the text-shadow property, you can generate a text shadow directly with our [CSS Text Shadow Generator](#).

Here you see how black text with a 4 pixel rgb(169, 135, 120) colored shadow looks like.

```
.shadow{ text-shadow: 4px 4px 2px rgb(169, 135, 120) }
```

Border

The CSS property to change the border of an element to CIELCh 59, 16.819, 50.518 is called "border". The border property can be set on classes, ids or directly on the HTML element.

This example shows the color as border, it can be applied via the CSS property "border" or "border-color".

```
.border, #border, table{ border:4px solid rgb(169, 135, 120) }
```

If only the border color should be changed use the property `border-color`.

```
.border{ border-color:rgb(169, 135, 120) }
```

If you want to add a box shadow in that color use:

Here you see how a box with a 4 pixel `rgb(169, 135, 120)` colored shadow looks like.

```
.boxshadow{ -moz-box-shadow:4px 4px 4px  
4px rgb(169, 135, 120); -webkit-box-  
shadow:4px 4px 4px 4px rgb(169, 135, 120);  
box-shadow:4px 4px 4px 4px rgb(169, 135,  
120) }
```

Background

The CSS property to change the background color of an element to CIELCh 59, 16.819, 50.518 is called "background". The background property can be set on classes, ids or directly on the HTML element.

```
.background, #background, body{  
background: rgb(169, 135, 120) }
```

If only the background color should be changed can be used:

```
.background{ background-color: rgb(169,  
135, 120) }
```

This example shows the color as background, it is applied via the CSS property "background".

To optimize and compress your CSS code, you can use our [online CSS compressor and optimizer](#) based on csstidy. If you want to create a linear or radial gradient as background or border, check our [CSS Gradient Generator](#).

Hey! You found this booklet interesting? Support Converting Colors with the new Membership Option!

The pro membership hides all ads, plus gives you double the colors in the color bucket, and more awesome pro features!

[Learn more, Memberships starting at \\$2.50/m!](#)

**Follow me
on Twitter!**

@ConvertingColor