

Converting Colors

CIELCh(59, 18.443, 30.954)

Have a look what the booklet for
CIELCh(59, 18.443, 30.954) contains.

CIELCh(59, 18.365, 31.697)	3
<i>Conversions</i>	4
<i>Details</i>	6
<i>Harmonies</i>	11
<i>Previews</i>	20
<i>Color Blindness Simulation</i>	23
<i>CSS Examples</i>	26

Color

CIELCh(59, 18.365, 31.697)

Conversions

Conversions Part 1

Format	Color
Hex	AF847E
RGB	175, 132, 126
RGB Percent	69%, 52%, 49%
CMY	0.3147, 0.4832, 0.5068
CMYK	0.00, 0.25, 0.28, 0.31
HSL	7°, 23%, 59%
HSV	7°, 28%, 69%
XYZ	29.5971, 27.0277, 23.3199
YIQ	144.1730, 27.5540, 7.2500

Conversions

Conversions Part 2

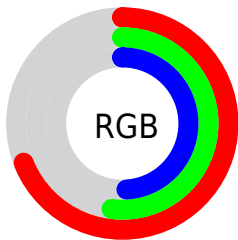
Format	Color
RYB	175, 133, 126
Decimal	11502718
CIELab	59.00, 15.63, 9.65
CIELCh	59, 18.365, 31.697
Yxy	27.0277, 0.3702, 0.3381
Android (android.graphics.Color)	4289692798 (0xFFAF847E)
YUV	144.1730, -8.9593, 27.0353
Hunter-Lab	51.9882, 10.6413, 9.7966

Details

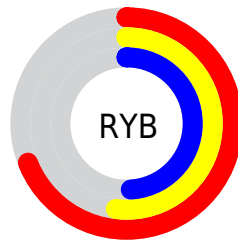
The CIELCh color $59, 18.365, 31.697$ is a dark color, and the websafe version is hex `CC9999`. A complement of this color would be $66, 15.112, 211.012$, and the grayscale version is $60, 0.008, 296.813$.

A 20% lighter version of the original color is $79, 18.223, 30.792$, and $39, 18.287, 31.371$ is the 20% darker color. If you saturate the color by 10%, you get $55, 25.946, 32.344$, and if you desaturate by 10%, it is $63, 11.335, 31.262$.

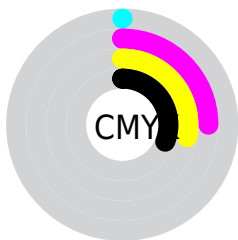
Distribution



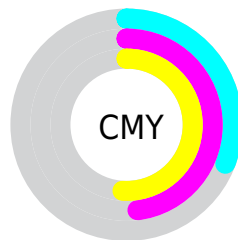
- Red (69%)
- Green (52%)
- Blue (49%)



- Red (69%)
- Yellow (52%)
- Blue (49%)



- Cyan (0%)
- Magenta (25%)
- Yellow (28%)
- Black (31%)



- Cyan (31%)
- Magenta (48%)
- Yellow (51%)

Brightness & Saturation Gradients

These gradients show how the CIELCh color 59, 18.365, 31.697 changes by changing the brightness by 10 percent. The first figure shows a shift by +10% for each color and the second figure -10%.

Similar to the brightness gradients but the following saturation gradients show a change of the CIELCh color 59, 18.365, 31.697 by changing the saturation by 10% instead.

■ 59, 18.365, 31.697

■ 59, 18.365, 31.697

■ 100, 18.365,
31.697

■ 49, 18.365, 31.697

■ 79, 18.365, 31.697

■ 39, 18.365, 31.697

■ 89, 18.365, 31.697

■ 29, 18.365, 31.697

■ 99, 18.365, 31.697

■ 19, 18.365, 31.697

■ 9, 18.365, 31.697

■ 0, 18.365, 31.697

■ 59, 18.365, 31.697

■ 59, 18.365, 31.697

■ 55, 25.946, 32.344

■ 63, 11.335, 31.262

■ 51, 34.066, 33.242

■ 68, 4.845, 30.938

47, 42.651, 34.456

72, 1.144, 211.338

44, 51.550, 36.017

77, 6.677, 210.922

41, 60.464, 37.872

81, 11.802,
210.906

39, 68.778, 39.749

86, 16.567,
210.960

37, 75.468, 41.207

37, 76.754, 41.638

91, 21.015,
211.056

95, 25.271,
198.497

95, 25.453,
197.848

Harmonies

Complementary

The Complementary color scheme is a pair of colors which are on the opposite of each other on the color wheel.



59, 18.365, 31.697



66, 15.112, 211.012

Rectangle

The Rectangle color scheme consists of four colors that form a rectangle on the color wheel.



59, 18.365, 31.697



59, 18.365, 81.697



59, 18.365, 211.697



59, 18.365, 261.697

Sweetspot

The Sweet Spot groups the original color and five complimentary colors.



59, 18.364, 31.704



86, 5.974, 30.942



59, 30.445, 329.412



45, 4.306, 30.989



96, 0.011, 296.813



48, 0.006, 296.813

Same Dimension

The Same Dimension uses a secret algorithm to generate beautiful new colors.



59, 18.364, 31.704



72, 28.297, 32.097



65, 18.489, 83.311



34, 3.412, 30.979



32, 68.176, 41.523



2, 7.098, 28.594

Inverse Universe

The Inverse Universe completely reimagines the original color for something new.



66, 15.112, 211.012



83, 22.090, 211.167



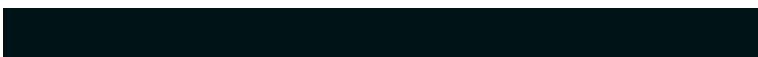
60, 18.041, 271.205



36, 3.216, 210.938



50, 29.712, 218.407



5, 6.719, 216.395

Previews

White Background



This preview shows how the CIELCh color 59, 18.365, 31.697 looks on a white background.

Color Contrast Check

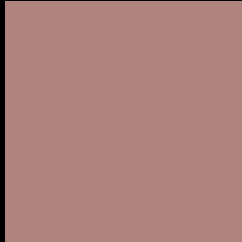
Large Text (above 18pt) WCAG AA ✓ Pass

Any Text WCAG AA ✗ Fail

Large Text (above 18pt) WCAG AAA ✗ Fail

Any Text WCAG AAA ✗ Fail

Black Background



This preview shows how the CIELCh color 59, 18.365, 31.697 looks on a black background.

Color Contrast Check

Large Text (above 18pt) WCAG AA ✓ Pass

Any Text WCAG AA ✓ Pass

Large Text (above 18pt) WCAG AAA ✓ Pass

Any Text WCAG AAA × Fail

If you want to check with other color combinations, try the [Color Contrast Checker](#).

CIELCh 59, 18.365, 31.697

Background



This preview shows how black text looks on a background with the CIELCh color 59, 18.365, 31.697.



This preview shows how white text looks on a background with the CIELCh color 59, 18.365, 31.697.

Color Blindness Simulation

Color vision deficiency is a very complex topic, and I could not describe the different causes any better than Wikipedia does, so if you want to learn more, you should check out their [article about color blindness](#).

Dichromacy



Original Color

59, 18.365, 31.697

Protanopia

59, 6.513, 91.426

Deuteranopia

59, 12.463, 52.927



Tritanopia
59, 19.310, 4.703

Trichromacy



Original Color
59, 18.365, 31.697

Protanomaly
59, 9.316, 52.914

Deuteranomaly
59, 14.572, 43.199

Tritanomaly
59, 18.494, 14.467

Monochromacy



Original Color
59, 18.365, 31.697

Achromatopsia
60, 0.008, 296.813

Achromatomaly
59, 6.239, 35.588

CSS Examples

Text

The CSS property to change the color of the text to CIELCh 59, 18.365, 31.697 is called "color". The color property can be set on classes, ids or directly on the HTML element.

This example shows how text in the color `rgb(175, 132, 126)` looks like.

```
.text, #text, p{  
    color:rgb(175, 132, 126)  
}
```

If you want to add a text shadow in that color use the text-shadow property, you can generate a text shadow directly with our [CSS Text Shadow Generator](#).

Here you see how black text with a 4 pixel rgb(175, 132, 126) colored shadow looks like.

```
.shadow{ text-shadow: 4px 4px 2px rgb(175, 132, 126) }
```

Border

The CSS property to change the border of an element to CIELCh 59, 18.365, 31.697 is called "border". The border property can be set on classes, ids or directly on the HTML element.

This example shows the color as border, it can be applied via the CSS property "border" or "border-color".

```
.border, #border, table{ border:4px solid rgb(175, 132, 126) }
```

If only the border color should be changed use the property `border-color`.

```
.border{ border-color:rgb(175, 132, 126) }
```

If you want to add a box shadow in that color use:

Here you see how a box with a 4 pixel `rgb(175, 132, 126)` colored shadow looks like.

```
.boxshadow{ -moz-box-shadow:4px 4px 4px  
4px rgb(175, 132, 126); -webkit-box-  
shadow:4px 4px 4px 4px rgb(175, 132, 126);  
box-shadow:4px 4px 4px 4px rgb(175, 132,  
126) }
```

Background

The CSS property to change the background color of an element to CIELCh 59, 18.365, 31.697 is called "background". The background property can be set on classes, ids or directly on the HTML element.

```
.background, #background, body{  
background: rgb(175, 132, 126) }
```

If only the background color should be changed can be used:

```
.background{ background-color: rgb(175,  
132, 126) }
```

This example shows the color as background, it is applied via the CSS property "background".

To optimize and compress your CSS code, you can use our [online CSS compressor and optimizer](#) based on csstidy. If you want to create a linear or radial gradient as background or border, check our [CSS Gradient Generator](#).

Hey! You found this booklet interesting? Support Converting Colors with the new Membership Option!

The pro membership hides all ads, plus gives you double the colors in the color bucket, and more awesome pro features!

[Learn more, Memberships starting at \\$2.50/m!](#)

**Follow me
on Twitter!**

@ConvertingColor