

Converting Colors

CIELCh(59, 21.383, 5.639)

Have a look what the booklet for
CIELCh(59, 21.383, 5.639) contains.

CIELCh(59, 21.438, 5.155)	3
<i>Conversions</i>	4
<i>Details</i>	6
<i>Harmonies</i>	11
<i>Previews</i>	20
<i>Color Blindness Simulation</i>	23
<i>CSS Examples</i>	26

Color

CIELCh(59, 21.438, 5.155)

Conversions

Conversions Part 1

Format	Color
Hex	B3808B
RGB	179, 128, 139
RGB Percent	70%, 50%, 55%
CMY	0.2966, 0.4967, 0.4536
CMYK	0.00, 0.28, 0.22, 0.30
HSL	347°, 25%, 60%
HSV	347°, 28%, 70%
XYZ	31.1227, 27.0277, 28.1330
YIQ	144.5030, 26.8650, 14.2330

Conversions

Conversions Part 2

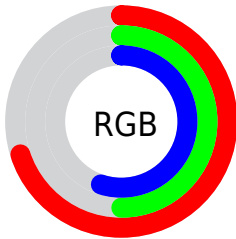
Format	Color
RYB	179, 128, 139
Decimal	11763851
CIELab	59.00, 21.35, 1.93
CIElCh	59, 21.438, 5.155
Yxy	27.0277, 0.3607, 0.3132
Android (android.graphics.Color)	4289953931 (0xFFB3808B)
YUV	144.5030, -2.7130, 30.2539
Hunter-Lab	51.9882, 15.8794, 4.3074

Details

The CIELCh color **59, 21.438, 5.155** is a light color, and the websafe version is hex **CC9999**. A complement of this color would be **69, 19.186, 179.437**, and the grayscale version is **60, 0.008, 296.813**.

A 20% lighter version of the original color is **79, 21.641, 5.695**, and **39, 21.488, 4.981** is the 20% darker color. If you saturate the color by 10%, you get **54, 29.493, 6.690**, and if you desaturate by 10%, it is **64, 13.596, 3.884**.

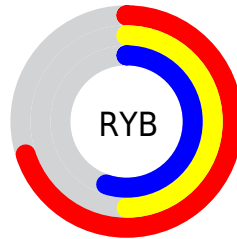
Distribution



Red (70%)

Green (50%)

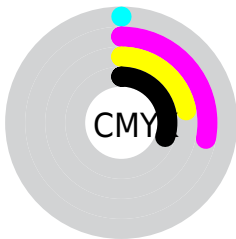
Blue (55%)



Red (70%)

Yellow (50%)

Blue (55%)

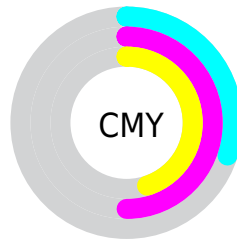


Cyan (0%)

Magenta (28%)

Yellow (22%)

Black (30%)



Cyan (30%)

Magenta (50%)

Yellow (45%)


Brightness & Saturation Gradients

These gradients show how the CIELCh color 59, 21.438, 5.155 changes by changing the brightness by 10 percent. The first figure shows a shift by +10% for each color and the second figure -10%.

Similar to the brightness gradients but the following saturation gradients show a change of the CIELCh color 59, 21.438, 5.155 by changing the saturation by 10% instead.

 59, 21.438, 5.155  59, 21.438, 5.155

 100, 21.438, 5.155  49, 21.438, 5.155


 79, 21.438, 5.155  39, 21.438, 5.155

 89, 21.438, 5.155  29, 21.438, 5.155

 99, 21.438, 5.155  19, 21.438, 5.155

 9, 21.438, 5.155

 0, 21.438, 5.155

 59, 21.438, 5.155  59, 21.438, 5.155

 54, 29.493, 6.690  64, 13.596, 3.884

 50, 37.596, 8.571  69, 6.074, 2.777

46, 45.490, 10.923

74, 1.085, 182.370

43, 52.862, 13.894

79, 7.872, 181.205

40, 59.417, 17.630

84, 14.299,
180.478

39, 65.000, 22.208

89, 20.388,
179.844

38, 69.807, 27.373

37, 70.574, 28.131

95, 26.168,
179.278

95, 24.417,
194.135

95, 24.167,
197.927

Harmonies

Complementary

The Complementary color scheme is a pair of colors which are on the opposite of each other on the color wheel.



59, 21.438, 5.155



69, 19.186, 179.437

Rectangle

The Rectangle color scheme consists of four colors that form a rectangle on the color wheel.



59, 21.438, 5.155



59, 21.438, 55.155



59, 21.438, 185.155



59, 21.438, 235.155

Sweetspot

The Sweet Spot groups the original color and five complimentary colors.



59, 21.436, 5.159



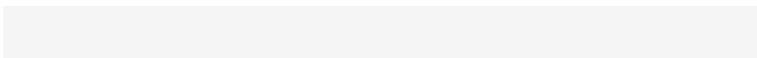
86, 7.995, 2.853



59, 32.327, 319.543



45, 5.621, 3.007



96, 0.011, 296.813



49, 0.007, 296.813

Same Dimension

The Same Dimension uses a secret algorithm to generate beautiful new colors.



59, 21.436, 5.159



71, 31.956, 6.060



62, 17.401, 48.025



35, 4.066, 2.871



32, 62.385, 27.366



2, 9.449, 5.839

Inverse Universe

The Inverse Universe completely reimagines the original color for something new.



59, 21.436, 5.159



71, 31.956, 6.060



66, 14.626, 231.995



35, 4.066, 2.871



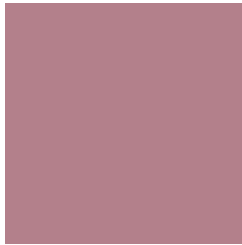
32, 62.385, 27.366



2, 9.449, 5.839

Previews

White Background



This preview shows how the CIELCh color 59, 21.438, 5.155 looks on a white background.

Color Contrast Check

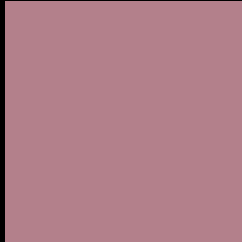
Large Text (above 18pt) WCAG AA ✓ Pass

Any Text WCAG AA ✗ Fail

Large Text (above 18pt) WCAG AAA ✗ Fail

Any Text WCAG AAA ✗ Fail

Black Background



This preview shows how the CIELCh color 59, 21.438, 5.155 looks on a black background.

Color Contrast Check

Large Text (above 18pt) WCAG AA ✓ Pass

Any Text WCAG AA ✓ Pass

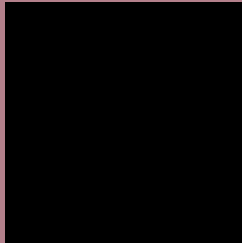
Large Text (above 18pt) WCAG AAA ✓ Pass

Any Text WCAG AAA × Fail

If you want to check with other color combinations, try the [Color Contrast Checker](#).

CIELCh 59, 21.438, 5.155

Background



This preview shows how black text looks on a background with the CIELCh color 59, 21.438, 5.155.



This preview shows how white text looks on a background with the CIELCh color 59, 21.438, 5.155.

Color Blindness Simulation

Color vision deficiency is a very complex topic, and I could not describe the different causes any better than Wikipedia does, so if you want to learn more, you should check out their [article about color blindness](#).

Dichromacy



Original Color

59, 21.438, 5.155

Protanopia

59, 2.868, 298.216

Deuteranopia

59, 8.014, 20.167



Tritanopia
59, 20.829, 7.766

Trichromacy



Original Color
59, 21.438, 5.155

Protanomaly
59, 8.476, 352.473

Deuteranomaly
59, 13.083, 10.897

Tritanomaly
59, 20.829, 7.766

Monochromacy



Original Color
59, 21.438, 5.155

Achromatopsia
60, 0.008, 296.813

Achromatomaly
60, 7.470, 2.591

CSS Examples

Text

The CSS property to change the color of the text to CIELCh 59, 21.438, 5.155 is called "color". The color property can be set on classes, ids or directly on the HTML element.

This example shows how text in the color `rgb(179, 128, 139)` looks like.

```
.text, #text, p{  
    color:rgb(179, 128, 139)  
}
```

If you want to add a text shadow in that color use the text-shadow property, you can generate a text shadow directly with our [CSS Text Shadow Generator](#).

Here you see how black text with a 4 pixel rgb(179, 128, 139) colored shadow looks like.

```
.shadow{ text-shadow: 4px 4px 2px rgb(179, 128, 139) }
```

Border

The CSS property to change the border of an element to CIELCh 59, 21.438, 5.155 is called "border". The border property can be set on classes, ids or directly on the HTML element.

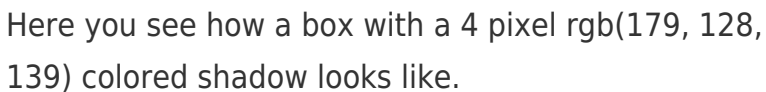
This example shows the color as border, it can be applied via the CSS property "border" or "border-color".

```
.border, #border, table{ border:4px solid rgb(179, 128, 139) }
```

If only the border color should be changed use the property `border-color`.

```
.border{ border-color:rgb(179, 128, 139) }
```

If you want to add a box shadow in that color use:



Here you see how a box with a 4 pixel `rgb(179, 128, 139)` colored shadow looks like.

```
.boxshadow{ -moz-box-shadow:4px 4px 4px 4px rgb(179, 128, 139); -webkit-box-shadow:4px 4px 4px 4px rgb(179, 128, 139); box-shadow:4px 4px 4px 4px rgb(179, 128, 139) }
```

Background

The CSS property to change the background color of an element to CIELCh 59, 21.438, 5.155 is called "background". The background property can be set on classes, ids or directly on the HTML element.

```
.background, #background, body{  
background: rgb(179, 128, 139) }
```

If only the background color should be changed can be used:

```
.background{ background-color: rgb(179,  
128, 139) }
```

This example shows the color as background, it is applied via the CSS property "background".

To optimize and compress your CSS code, you can use our [online CSS compressor and optimizer](#) based on csstidy. If you want to create a linear or radial gradient as background or border, check our [CSS Gradient Generator](#).

Hey! You found this booklet interesting? Support Converting Colors with the new Membership Option!

The pro membership hides all ads, plus gives you double the colors in the color bucket, and more awesome pro features!

[Learn more, Memberships starting at \\$2.50/m!](#)

**Follow me
on Twitter!**

@ConvertingColor