

Converting Colors

CIELCh(59, 22.864, 9.929)

Have a look what the booklet for
CIELCh(59, 22.864, 9.929) contains.

CIELCh(59, 22.903, 9.337)	3
<i>Conversions</i>	4
<i>Details</i>	6
<i>Harmonies</i>	11
<i>Previews</i>	20
<i>Color Blindness Simulation</i>	23
<i>CSS Examples</i>	26

Color

CIELCh(59, 22.903, 9.337)

Conversions

Conversions Part 1

Format	Color
Hex	B67F88
RGB	182, 127, 136
RGB Percent	71%, 50%, 53%
CMY	0.2850, 0.5008, 0.4655
CMYK	0.00, 0.30, 0.25, 0.28
HSL	350°, 27%, 61%
HSV	350°, 30%, 72%
XYZ	31.4621, 27.0277, 26.9639
YIQ	144.4710, 29.8910, 14.4590

Conversions

Conversions Part 2

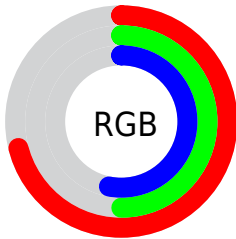
Format	Color
R_{YB}	182, 127, 136
Decimal	11960200
CIE _{Lab}	59.00, 22.60, 3.72
CIE _{LCh}	59, 22.903, 9.337
Yxy	27.0277, 0.3682, 0.3163
Android (android.graphics.Color)	4290150280 (0xFFB67F88)
YUV	144.4710, -4.1762, 32.9129
Hunter-Lab	51.9882, 17.0448, 5.6408

Details

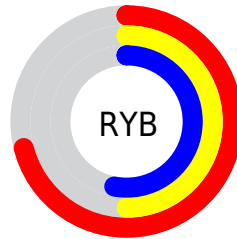
The CIELCh color **59, 22.903, 9.337** is a dark color, and the websafe version is hex **CC9999**. A complement of this color would be **70, 19.935, 183.433**, and the grayscale version is **60, 0.008, 296.813**.

A 20% lighter version of the original color is **79, 23.013, 9.491**, and **39, 23.093, 9.687** is the 20% darker color. If you saturate the color by 10%, you get **54, 31.144, 10.934**, and if you desaturate by 10%, it is **64, 14.929, 8.036**.

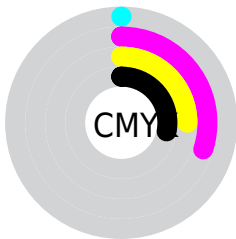
Distribution



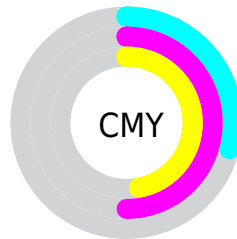
- Red (71%)
- Green (50%)
- Blue (53%)



- Red (71%)
- Yellow (50%)
- Blue (53%)



- Cyan (0%)
- Magenta (30%)
- Yellow (25%)
- Black (28%)



- Cyan (29%)
- Magenta (50%)
- Yellow (47%)

Brightness & Saturation Gradients

These gradients show how the CIELCh color 59, 22.903, 9.337 changes by changing the brightness by 10 percent. The first figure shows a shift by +10% for each color and the second figure -10%.

Similar to the brightness gradients but the following saturation gradients show a change of the CIELCh color 59, 22.903, 9.337 by changing the saturation by 10% instead.

 59, 22.903, 9.337  59, 22.903, 9.337

 100, 22.903, 9.337  49, 22.903, 9.337

 79, 22.903, 9.337  39, 22.903, 9.337

 89, 22.903, 9.337  29, 22.903, 9.337

 99, 22.903, 9.337  19, 22.903, 9.337

 9, 22.903, 9.337

 0, 22.903, 9.337

 59, 22.903, 9.337  59, 22.903, 9.337

 54, 31.144, 10.934  64, 14.929, 8.036

 50, 39.487, 12.918  69, 7.324, 6.930

46, 47.681, 15.420

74, 0.126, 2.246

43, 55.425, 18.584

79, 6.660, 185.388

41, 62.446, 22.522

85, 13.053,
184.677

39, 68.598, 27.206

90, 19.081,
184.071

38, 73.965, 32.004

95, 24.776,
183.537

95, 23.326,
197.979

Harmonies

Complementary

The Complementary color scheme is a pair of colors which are on the opposite of each other on the color wheel.



59, 22.903, 9.337



70, 19.935, 183.433

Rectangle

The Rectangle color scheme consists of four colors that form a rectangle on the color wheel.



59, 22.903, 9.337



59, 22.903, 59.337



59, 22.903, 189.337



59, 22.903, 239.337

Sweetspot

The Sweet Spot groups the original color and five complimentary colors.



59, 22.901, 9.341



88, 7.997, 6.822



59, 35.178, 321.151



46, 5.625, 6.975



97, 0.011, 296.813



50, 0.007, 296.813

Same Dimension

The Same Dimension uses a secret algorithm to generate beautiful new colors.



59, 22.901, 9.341



72, 34.313, 10.326



63, 18.622, 53.461



36, 4.091, 6.842



32, 65.336, 31.306



2, 10.822, 9.565

Inverse Universe

The Inverse Universe completely reimagines the original color for something new.



59, 22.901, 9.341



72, 34.313, 10.326



65, 15.761, 239.111



36, 4.091, 6.842



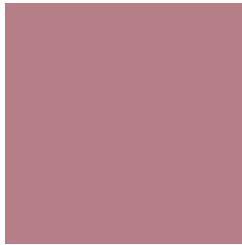
32, 65.336, 31.306



2, 10.822, 9.565

Previews

White Background



This preview shows how the CIELCh color 59, 22.903, 9.337 looks on a white background.

Color Contrast Check

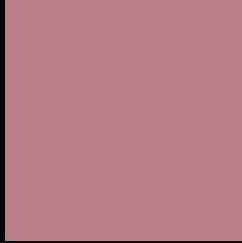
Large Text (above 18pt) WCAG AA ✓ Pass

Any Text WCAG AA ✗ Fail

Large Text (above 18pt) WCAG AAA ✗ Fail

Any Text WCAG AAA ✗ Fail

Black Background



This preview shows how the CIELCh color 59, 22.903, 9.337 looks on a black background.

Color Contrast Check

Large Text (above 18pt) WCAG AA ✓ Pass

Any Text WCAG AA ✓ Pass

Large Text (above 18pt) WCAG AAA ✓ Pass

Any Text WCAG AAA × Fail

If you want to check with other color combinations, try the [Color Contrast Checker](#).

CIELCh 59, 22.903, 9.337

Background



This preview shows how black text looks on a background with the CIELCh color 59, 22.903, 9.337.



This preview shows how white text looks on a background with the CIELCh color 59, 22.903, 9.337.

Color Blindness Simulation

Color vision deficiency is a very complex topic, and I could not describe the different causes any better than Wikipedia does, so if you want to learn more, you should check out their [article about color blindness](#).

Dichromacy



Original Color


59, 22.903, 9.337

Protanopia

59, 1.387, 324.370

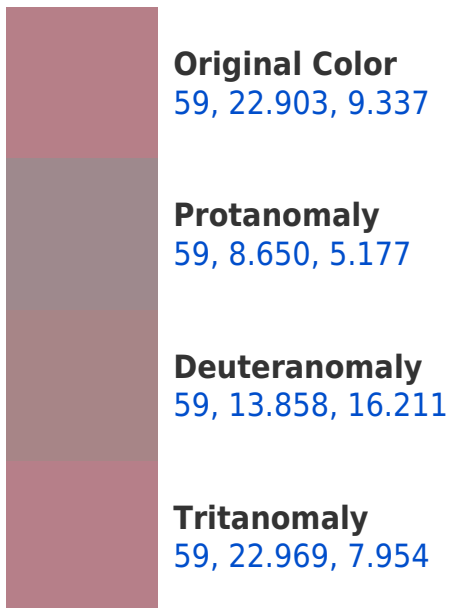
Deuteranopia

59, 9.080, 30.933

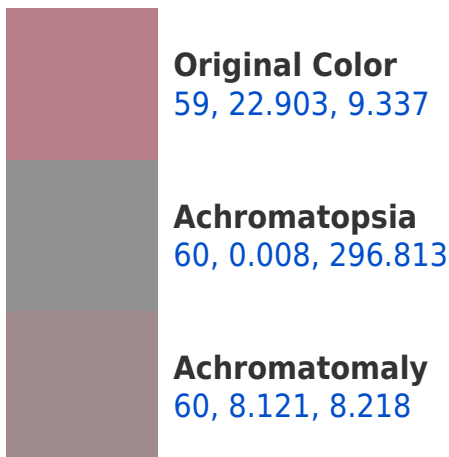


Tritanopia
59, 22.969, 7.954

Trichromacy



Monochromacy



CSS Examples

Text

The CSS property to change the color of the text to CIELCh 59, 22.903, 9.337 is called "color". The color property can be set on classes, ids or directly on the HTML element.

This example shows how text in the color `rgb(182, 127, 136)` looks like.

```
.text, #text, p{  
    color:rgb(182, 127, 136)  
}
```

If you want to add a text shadow in that color use the text-shadow property, you can generate a text shadow directly with our [CSS Text Shadow Generator](#).

Here you see how black text with a 4 pixel rgb(182, 127, 136) colored shadow looks like.

```
.shadow{ text-shadow: 4px 4px 2px rgb(182, 127, 136) }
```

Border

The CSS property to change the border of an element to CIELCh 59, 22.903, 9.337 is called "border". The border property can be set on classes, ids or directly on the HTML element.

This example shows the color as border, it can be applied via the CSS property "border" or "border-color".

```
.border, #border, table{ border:4px solid rgb(182, 127, 136) }
```

If only the border color should be changed use the property `border-color`.

```
.border{ border-color:rgb(182, 127, 136) }
```

If you want to add a box shadow in that color use:

Here you see how a box with a 4 pixel `rgb(182, 127, 136)` colored shadow looks like.

```
.boxshadow{ -moz-box-shadow:4px 4px 4px  
4px rgb(182, 127, 136); -webkit-box-  
shadow:4px 4px 4px 4px rgb(182, 127, 136);  
box-shadow:4px 4px 4px 4px rgb(182, 127,  
136) }
```

Background

The CSS property to change the background color of an element to CIELCh 59, 22.903, 9.337 is called "background". The background property can be set on classes, ids or directly on the HTML element.

```
.background, #background, body{  
background: rgb(182, 127, 136) }
```

If only the background color should be changed can be used:

```
.background{ background-color: rgb(182,  
127, 136) }
```

This example shows the color as background, it is applied via the CSS property "background".

To optimize and compress your CSS code, you can use our [online CSS compressor and optimizer](#) based on csstidy. If you want to create a linear or radial gradient as background or border, check our [CSS Gradient Generator](#).

Hey! You found this booklet interesting? Support Converting Colors with the new Membership Option!

The pro membership hides all ads, plus gives you double the colors in the color bucket, and more awesome pro features!

[Learn more, Memberships starting at \\$2.50/m!](#)

**Follow me
on Twitter!**

@ConvertingColor