

Converting Colors

CIELCh(59, 23.633, 31.329)

Have a look what the booklet for
CIELCh(59, 23.633, 31.329) contains.

CIELCh(59, 23.791, 31.220)	3
<i>Conversions</i>	4
<i>Details</i>	6
<i>Harmonies</i>	11
<i>Previews</i>	20
<i>Color Blindness Simulation</i>	23
<i>CSS Examples</i>	26

Color

CIELCh(59, 23.791, 31.220)

Conversions

Conversions Part 1

Format	Color
Hex	B78079
RGB	183, 128, 121
RGB Percent	72%, 50%, 47%
CMY	0.2809, 0.4967, 0.5242
CMYK	0.00, 0.30, 0.34, 0.28
HSL	7°, 30%, 60%
HSV	7°, 34%, 72%
XYZ	30.8510, 27.0277, 21.7867
YIQ	143.6470, 35.0270, 9.4830

Conversions

Conversions Part 2

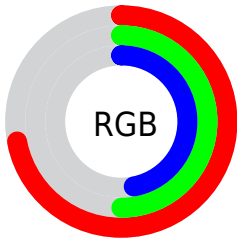
Format	Color
R_{YB}	183, 129, 121
Decimal	12025977
CIE Lab	59.00, 20.35, 12.33
CIE LCh	59, 23.791, 31.220
Yxy	27.0277, 0.3873, 0.3393
Android (android.graphics.Color)	4290216057 (0xFFB78079)
YUV	143.6470, -11.1650, 34.5126
Hunter-Lab	51.9882, 14.9467, 11.5450

Details

The CIELCh color **59, 23.791, 31.220** is a dark color, and the websafe version is hex **CC9999**. A complement of this color would be **69, 18.670, 209.997**, and the grayscale version is **60, 0.008, 296.813**.

A 20% lighter version of the original color is **79, 23.774, 31.446**, and **39, 23.839, 31.468** is the 20% darker color. If you saturate the color by 10%, you get **55, 32.063, 32.075**, and if you desaturate by 10%, it is **63, 16.087, 30.620**.

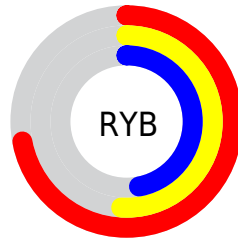
Distribution



Red (72%)

Green (50%)

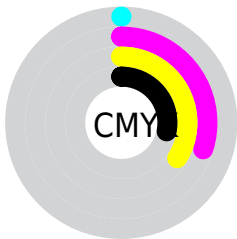
Blue (47%)



Red (72%)

Yellow (51%)

Blue (47%)

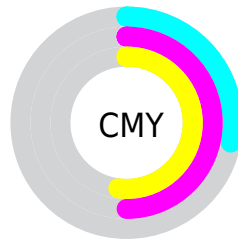


Cyan (0%)

Magenta (30%)

Yellow (34%)

Black (28%)



Cyan (28%)

Magenta (50%)

Yellow (52%)

Brightness & Saturation Gradients

These gradients show how the CIELCh color 59, 23.791, 31.220 changes by changing the brightness by 10 percent. The first figure shows a shift by +10% for each color and the second figure -10%.

Similar to the brightness gradients but the following saturation gradients show a change of the CIELCh color 59, 23.791, 31.220 by changing the saturation by 10% instead.

■ 59, 23.791, 31.220

■ 59, 23.791, 31.220

■ 100, 23.791,
31.220

■ 49, 23.791, 31.220

■ 79, 23.791, 31.220

■ 39, 23.791, 31.220

■ 89, 23.791, 31.220

■ 29, 23.791, 31.220

■ 99, 23.791, 31.220

■ 19, 23.791, 31.220

■ 9, 23.791, 31.220

■ 0, 23.791, 31.220

■ 59, 23.791, 31.220

■ 59, 23.791, 31.220

■ 55, 32.063, 32.075

■ 63, 16.087, 30.620

■ 51, 40.853, 33.232

■ 68, 8.959, 30.193

47, 50.033, 34.746

73, 2.382, 29.780

44, 59.358, 36.612

77, 3.687, 209.999

42, 68.347, 38.665

82, 9.298, 209.857

40, 75.956, 40.371

87, 14.501,
209.843

39, 79.834, 41.408

92, 19.344,
209.886

96, 23.028,
197.998

Harmonies

Complementary

The Complementary color scheme is a pair of colors which are on the opposite of each other on the color wheel.



59, 23.791, 31.220



69, 18.670, 209.997

Rectangle

The Rectangle color scheme consists of four colors that form a rectangle on the color wheel.



59, 23.791, 31.220



59, 23.791, 81.220



59, 23.791, 211.220



59, 23.791, 261.220

Sweetspot

The Sweet Spot groups the original color and five complimentary colors.



59, 23.789, 31.225



88, 7.864, 30.063



59, 38.551, 329.223



46, 5.440, 30.112



97, 0.011, 296.813



50, 0.007, 296.813

Same Dimension

The Same Dimension uses a secret algorithm to generate beautiful new colors.



59, 23.789, 31.225



71, 36.656, 31.868



67, 23.111, 81.013



36, 3.606, 30.034



33, 70.222, 41.382



3, 9.825, 26.878

Inverse Universe

The Inverse Universe completely reimagines the original color for something new.



69, 18.670, 209.997



85, 26.920, 210.222



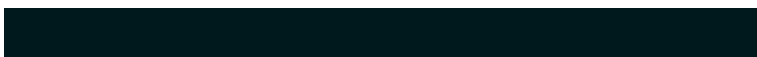
60, 22.245, 270.902



38, 3.397, 209.913



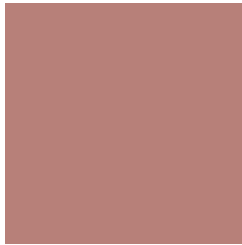
52, 30.608, 216.536



7, 9.005, 214.754

Previews

White Background



This preview shows how the CIELCh color 59, 23.791, 31.220 looks on a white background.

Color Contrast Check

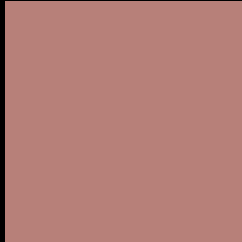
Large Text (above 18pt) WCAG AA ✓ Pass

Any Text WCAG AA ✗ Fail

Large Text (above 18pt) WCAG AAA ✗ Fail

Any Text WCAG AAA ✗ Fail

Black Background



This preview shows how the CIELCh color 59, 23.791, 31.220 looks on a black background.

Color Contrast Check

Large Text (above 18pt) WCAG AA ✓ Pass

Any Text WCAG AA ✓ Pass

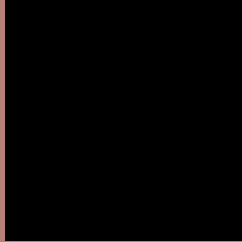
Large Text (above 18pt) WCAG AAA ✓ Pass

Any Text WCAG AAA × Fail

If you want to check with other color combinations, try the [Color Contrast Checker](#).

CIELCh 59, 23.791, 31.220

Background



This preview shows how black text looks on a background with the CIELCh color 59, 23.791, 31.220.



This preview shows how white text looks on a background with the CIELCh color 59, 23.791, 31.220.

Color Blindness Simulation

Color vision deficiency is a very complex topic, and I could not describe the different causes any better than Wikipedia does, so if you want to learn more, you should check out their [article about color blindness](#).

Dichromacy



Original Color

59, 23.791, 31.220

Protanopia

59, 8.254, 92.065

Deuteranopia

59, 14.982, 59.690



Tritanopia
59, 24.611, 9.141

Trichromacy



Original Color
59, 23.791, 31.220

Protanomaly
59, 11.772, 51.843

Deuteranomaly
59, 17.689, 47.019

Tritanomaly
59, 23.636, 16.631

Monochromacy



Original Color
59, 23.791, 31.220

Achromatopsia
60, 0.008, 296.813

Achromatomaly
59, 8.136, 28.089

CSS Examples

Text

The CSS property to change the color of the text to CIELCh 59, 23.791, 31.220 is called "color". The color property can be set on classes, ids or directly on the HTML element.

This example shows how text in the color `rgb(183, 128, 121)` looks like.

```
.text, #text, p{  
    color:rgb(183, 128, 121)  
}
```

If you want to add a text shadow in that color use the text-shadow property, you can generate a text shadow directly with our [CSS Text Shadow Generator](#).

Here you see how black text with a 4 pixel rgb(183, 128, 121) colored shadow looks like.

```
.shadow{ text-shadow: 4px 4px 2px rgb(183, 128, 121) }
```

Border

The CSS property to change the border of an element to CIELCh 59, 23.791, 31.220 is called "border". The border property can be set on classes, ids or directly on the HTML element.

This example shows the color as border, it can be applied via the CSS property "border" or "border-color".

```
.border, #border, table{ border:4px solid rgb(183, 128, 121) }
```

If only the border color should be changed use the property `border-color`.

```
.border{ border-color:rgb(183, 128, 121) }
```

If you want to add a box shadow in that color use:

Here you see how a box with a 4 pixel `rgb(183, 128, 121)` colored shadow looks like.

```
.boxshadow{ -moz-box-shadow:4px 4px 4px  
4px rgb(183, 128, 121); -webkit-box-  
shadow:4px 4px 4px 4px rgb(183, 128, 121);  
box-shadow:4px 4px 4px 4px rgb(183, 128,  
121) }
```

Background

The CSS property to change the background color of an element to CIELCh 59, 23.791, 31.220 is called "background". The background property can be set on classes, ids or directly on the HTML element.

```
.background, #background, body{  
background: rgb(183, 128, 121) }
```

If only the background color should be changed can be used:

```
.background{ background-color: rgb(183,  
128, 121) }
```

This example shows the color as background, it is applied via the CSS property "background".

To optimize and compress your CSS code, you can use our [online CSS compressor and optimizer](#) based on csstidy. If you want to create a linear or radial gradient as background or border, check our [CSS Gradient Generator](#).

Hey! You found this booklet interesting? Support Converting Colors with the new Membership Option!

The pro membership hides all ads, plus gives you double the colors in the color bucket, and more awesome pro features!

[Learn more, Memberships starting at \\$2.50/m!](#)

**Follow me
on Twitter!**

@ConvertingColor