

Converting Colors

CIELCh(59, 24.508, 22.017)

Have a look what the booklet for
CIELCh(59, 24.508, 22.017) contains.

CIELCh(59, 24.256, 22.042)	3
<i>Conversions</i>	4
<i>Details</i>	6
<i>Harmonies</i>	11
<i>Previews</i>	20
<i>Color Blindness Simulation</i>	23
<i>CSS Examples</i>	26

Color

CIELCh(59, 24.256, 22.042)

Conversions

Conversions Part 1

Format	Color
Hex	B97F7F
RGB	185, 127, 127
RGB Percent	73%, 50%, 50%
CMY	0.2745, 0.5019, 0.5019
CMYK	0.00, 0.31, 0.31, 0.27
HSL	0°, 29%, 61%
HSV	0°, 31%, 73%
XYZ	31.4303, 27.0277, 23.6409
YIQ	144.3420, 34.5680, 12.2960

Conversions

Conversions Part 2

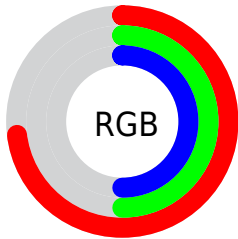
Format	Color
R_{YB}	185, 127, 127
Decimal	12156799
CIE _{Lab}	59.00, 22.48, 9.10
CIE _{LCh}	59, 24.256, 22.042
Yxy	27.0277, 0.3828, 0.3292
Android (android.graphics.Color)	4290346879 (0xFFB97F7F)
YUV	144.3420, -8.5496, 35.6571
Hunter-Lab	51.9882, 16.9357, 9.4305

Details

The CIELCh color **59, 24.256, 22.042** is a dark color, and the websafe version is hex **CC9999**. A complement of this color would be **71, 19.597, 197.886**, and the grayscale version is **60, 0.008, 296.813**.

A 20% lighter version of the original color is **79, 24.175, 21.425**, and **39, 24.231, 21.793** is the 20% darker color. If you saturate the color by 10%, you get **54, 33.121, 23.472**, and if you desaturate by 10%, it is **64, 15.908, 20.948**.

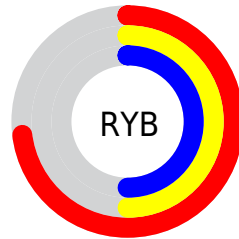
Distribution



Red (73%)

Green (50%)

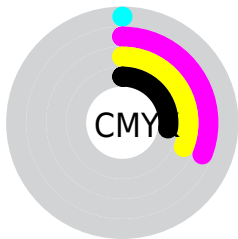
Blue (50%)



Red (73%)

Yellow (50%)

Blue (50%)

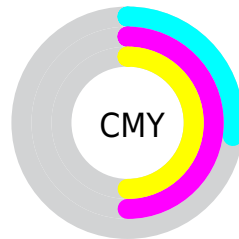


Cyan (0%)

Magenta (31%)

Yellow (31%)

Black (27%)



Cyan (27%)

Magenta (50%)

Yellow (50%)

Brightness & Saturation Gradients

These gradients show how the CIELCh color 59, 24.256, 22.042 changes by changing the brightness by 10 percent. The first figure shows a shift by +10% for each color and the second figure -10%.

Similar to the brightness gradients but the following saturation gradients show a change of the CIELCh color 59, 24.256, 22.042 by changing the saturation by 10% instead.

■ 59, 24.256, 22.042

■ 59, 24.256, 22.042

■ 100, 24.256,
22.042

■ 49, 24.256, 22.042

■ 79, 24.256, 22.042

■ 39, 24.256, 22.042

■ 89, 24.256, 22.042

■ 29, 24.256, 22.042

■ 99, 24.256, 22.042

■ 19, 24.256, 22.042

■ 9, 24.256, 22.042

■ 0, 24.256, 22.042

■ 59, 24.256, 22.042

■ 59, 24.256, 22.042

■ 54, 33.121, 23.472

■ 64, 15.908, 20.948

■ 50, 42.386, 25.329

■ 69, 8.134, 20.080

46, 51.836, 27.724

74, 0.932, 18.934

43, 61.165, 30.717

80, 5.732, 199.074

41, 69.940, 34.191

85, 11.904,
198.622

39, 77.325, 37.593

91, 17.635,
198.284

38, 82.170, 39.999

96, 22.556,
198.027

Harmonies

Complementary

The Complementary color scheme is a pair of colors which are on the opposite of each other on the color wheel.



59, 24.256, 22.042



71, 19.597, 197.886

Rectangle

The Rectangle color scheme consists of four colors that form a rectangle on the color wheel.



59, 24.256, 22.042



59, 24.256, 72.042



59, 24.256, 202.042



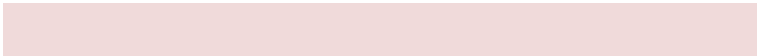
59, 24.256, 252.042

Sweetspot

The Sweet Spot groups the original color and five complimentary colors.



59, 24.254, 22.047



89, 7.893, 19.906



61, 38.551, 326.120



46, 5.512, 20.020



97, 0.011, 296.813



50, 0.007, 296.813

Same Dimension

The Same Dimension uses a secret algorithm to generate beautiful new colors.



59, 24.254, 22.047



71, 37.227, 23.045



66, 20.232, 71.556



36, 4.003, 19.921



32, 71.869, 39.600



2, 10.637, 19.409

Inverse Universe

The Inverse Universe completely reimagines the original color for something new.



71, 19.597, 197.886



89, 28.429, 197.589



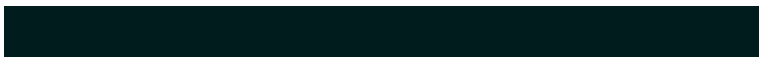
63, 18.560, 260.346



38, 3.777, 198.991



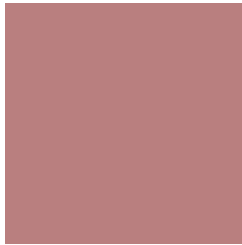
58, 34.640, 196.397



8, 10.517, 197.748

Previews

White Background



This preview shows how the CIELCh color 59, 24.256, 22.042 looks on a white background.

Color Contrast Check

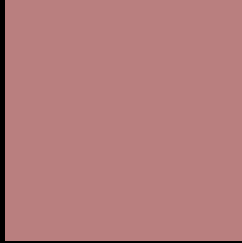
Large Text (above 18pt) WCAG AA ✓ Pass

Any Text WCAG AA ✗ Fail

Large Text (above 18pt) WCAG AAA ✗ Fail

Any Text WCAG AAA ✗ Fail

Black Background



This preview shows how the CIE LCh color 59, 24.256, 22.042 looks on a black background.

Color Contrast Check

Large Text (above 18pt) WCAG AA ✓ Pass

Any Text WCAG AA ✓ Pass

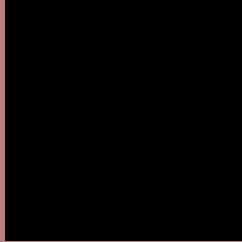
Large Text (above 18pt) WCAG AAA ✓ Pass

Any Text WCAG AAA × Fail

If you want to check with other color combinations, try the [Color Contrast Checker](#).

CIELCh 59, 24.256, 22.042

Background



This preview shows how black text looks on a background with the CIELCh color 59, 24.256, 22.042.



This preview shows how white text looks on a background with the CIELCh color 59, 24.256, 22.042.

Color Blindness Simulation

Color vision deficiency is a very complex topic, and I could not describe the different causes any better than Wikipedia does, so if you want to learn more, you should check out their [article about color blindness](#).

Dichromacy



Original Color

59, 24.256, 22.042

Protanopia

59, 4.410, 82.817

Deuteranopia

59, 12.463, 52.927



Tritanopia
59, 24.968, 10.684

Trichromacy



Original Color
59, 24.256, 22.042

Protanomaly
59, 10.209, 36.256

Deuteranomaly
59, 15.991, 35.070

Tritanomaly
59, 24.907, 14.521

Monochromacy



Original Color
59, 24.256, 22.042

Achromatopsia
60, 0.008, 296.813

Achromatomaly
59, 8.423, 20.211

CSS Examples

Text

The CSS property to change the color of the text to CIELCh 59, 24.256, 22.042 is called "color". The color property can be set on classes, ids or directly on the HTML element.

This example shows how text in the color `rgb(185, 127, 127)` looks like.

```
.text, #text, p{  
    color:rgb(185, 127, 127)  
}
```

If you want to add a text shadow in that color use the text-shadow property, you can generate a text shadow directly with our [CSS Text Shadow Generator](#).

Here you see how black text with a 4 pixel rgb(185, 127, 127) colored shadow looks like.

```
.shadow{ text-shadow: 4px 4px 2px rgb(185, 127, 127) }
```

Border

The CSS property to change the border of an element to CIELCh 59, 24.256, 22.042 is called "border". The border property can be set on classes, ids or directly on the HTML element.

This example shows the color as border, it can be applied via the CSS property "border" or "border-color".

```
.border, #border, table{ border:4px solid rgb(185, 127, 127) }
```

If only the border color should be changed use the property `border-color`.

```
.border{ border-color:rgb(185, 127, 127) }
```

If you want to add a box shadow in that color use:

Here you see how a box with a 4 pixel `rgb(185, 127, 127)` colored shadow looks like.

```
.boxshadow{ -moz-box-shadow:4px 4px 4px  
4px rgb(185, 127, 127); -webkit-box-  
shadow:4px 4px 4px 4px rgb(185, 127, 127);  
box-shadow:4px 4px 4px 4px rgb(185, 127,  
127) }
```

Background

The CSS property to change the background color of an element to CIELCh 59, 24.256, 22.042 is called "background". The background property can be set on classes, ids or directly on the HTML element.

```
.background, #background, body{  
background: rgb(185, 127, 127) }
```

If only the background color should be changed can be used:

```
.background{ background-color: rgb(185,  
127, 127) }
```

This example shows the color as background, it is applied via the CSS property "background".

To optimize and compress your CSS code, you can use our [online CSS compressor and optimizer](#) based on csstidy. If you want to create a linear or radial gradient as background or border, check our [CSS Gradient Generator](#).

Hey! You found this booklet interesting? Support Converting Colors with the new Membership Option!

The pro membership hides all ads, plus gives you double the colors in the color bucket, and more awesome pro features!

[Learn more, Memberships starting at \\$2.50/m!](#)

**Follow me
on Twitter!**

@ConvertingColor