

Converting Colors

CIELCh(59, 25.124, 11.964)

Have a look what the booklet for
CIELCh(59, 25.124, 11.964) contains.

CIELCh(59, 24.934, 11.960)	3
<i>Conversions</i>	4
<i>Details</i>	6
<i>Harmonies</i>	11
<i>Previews</i>	20
<i>Color Blindness Simulation</i>	23
<i>CSS Examples</i>	26

Color

CIELCh(59, 24.934, 11.960)

Conversions

Conversions Part 1

Format	Color
Hex	BA7E86
RGB	186, 126, 134
RGB Percent	73%, 49%, 53%
CMY	0.2711, 0.5064, 0.4750
CMYK	0.00, 0.32, 0.28, 0.27
HSL	352°, 30%, 61%
HSV	352°, 32%, 73%
XYZ	31.9540, 27.0277, 26.0399
YIQ	144.8520, 33.1920, 15.2080

Conversions

Conversions Part 2

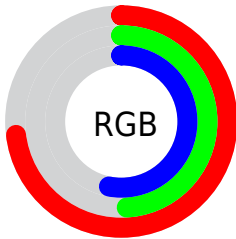
Format	Color
R_{YB}	186, 126, 134
Decimal	12222086
CIE _{Lab}	59.00, 24.39, 5.17
CIE _{LCh}	59, 24.934, 11.960
Yxy	27.0277, 0.3758, 0.3179
Android (android.graphics.Color)	4290412166 (0xFFBA7E86)
YUV	144.8520, -5.3500, 36.0868
Hunter-Lab	51.9882, 18.7336, 6.6945

Details

The CIELCh color **59, 24.934, 11.960** is a dark color, and the websafe version is hex **CC9999**. A complement of this color would be **71, 21.188, 185.775**, and the grayscale version is **60, 0.008, 296.813**.

A 20% lighter version of the original color is **79, 24.913, 11.835**, and **39, 24.875, 11.043** is the 20% darker color. If you saturate the color by 10%, you get **54, 33.409, 13.623**, and if you desaturate by 10%, it is **64, 16.749, 10.622**.

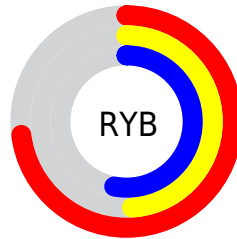
Distribution



Red (73%)

Green (49%)

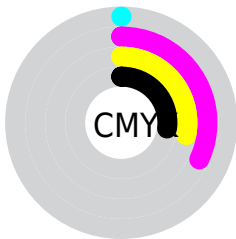
Blue (53%)



Red (73%)

Yellow (49%)

Blue (53%)

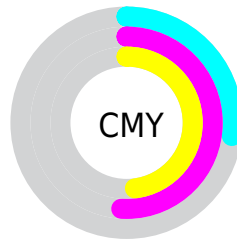


Cyan (0%)

Magenta (32%)

Yellow (28%)

Black (27%)



Cyan (27%)

Magenta (51%)

Yellow (48%)

Brightness & Saturation Gradients

These gradients show how the CIELCh color 59, 24.934, 11.960 changes by changing the brightness by 10 percent. The first figure shows a shift by +10% for each color and the second figure -10%.

Similar to the brightness gradients but the following saturation gradients show a change of the CIELCh color 59, 24.934, 11.960 by changing the saturation by 10% instead.

■ 59, 24.934, 11.960

■ 59, 24.934, 11.960

■ 100, 24.934,
11.960

■ 49, 24.934, 11.960

■ 79, 24.934, 11.960

■ 39, 24.934, 11.960

■ 89, 24.934, 11.960

■ 29, 24.934, 11.960

■ 99, 24.934, 11.960

■ 19, 24.934, 11.960

■ 9, 24.934, 11.960

■ 0, 24.934, 11.960

■ 59, 24.934, 11.960

■ 59, 24.934, 11.960

■ 54, 33.409, 13.623

■ 64, 16.749, 10.622

■ 50, 42.000, 15.709

■ 69, 8.961, 9.505

46, 50.448, 18.354

74, 1.612, 8.342

43, 58.452, 21.688

80, 5.295, 187.978

41, 65.751, 25.779

85, 11.781,
187.264

39, 72.172, 30.480

90, 17.876,
186.674

39, 76.595, 34.008

95, 23.194,
187.227

96, 22.310,
198.043

Harmonies

Complementary

The Complementary color scheme is a pair of colors which are on the opposite of each other on the color wheel.



59, 24.934, 11.960



71, 21.188, 185.775

Rectangle

The Rectangle color scheme consists of four colors that form a rectangle on the color wheel.



59, 24.934, 11.960



59, 24.934, 61.960



59, 24.934, 191.960



59, 24.934, 241.960

Sweetspot

The Sweet Spot groups the original color and five complimentary colors.



59, 24.932, 11.964



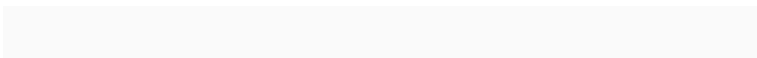
89, 8.997, 9.288



60, 38.516, 322.253



47, 6.215, 9.433



98, 0.011, 296.813



51, 0.007, 296.813

Same Dimension

The Same Dimension uses a secret algorithm to generate beautiful new colors.



59, 24.932, 11.964



71, 38.017, 13.151



64, 20.332, 57.005



36, 4.059, 9.203



32, 66.642, 33.288



2, 10.764, 11.352

Inverse Universe

The Inverse Universe completely reimagines the original color for something new.



59, 24.932, 11.964



71, 38.017, 13.151



65, 17.258, 243.997



36, 4.059, 9.203



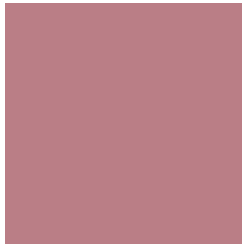
32, 66.642, 33.288



2, 10.764, 11.352

Previews

White Background



This preview shows how the CIELCh color 59, 24.934, 11.960 looks on a white background.

Color Contrast Check

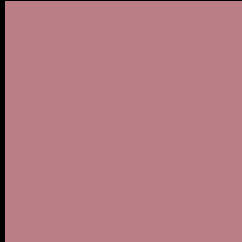
Large Text (above 18pt) WCAG AA ✓ Pass

Any Text WCAG AA ✗ Fail

Large Text (above 18pt) WCAG AAA ✗ Fail

Any Text WCAG AAA ✗ Fail

Black Background



This preview shows how the CIE LCh color 59, 24.934, 11.960 looks on a black background.

Color Contrast Check

Large Text (above 18pt) WCAG AA ✓ Pass

Any Text WCAG AA ✓ Pass

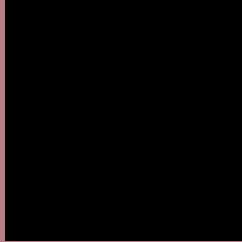
Large Text (above 18pt) WCAG AAA ✓ Pass

Any Text WCAG AAA × Fail

If you want to check with other color combinations, try the [Color Contrast Checker](#).

CIELCh 59, 24.934, 11.960

Background



This preview shows how black text looks on a background with the CIELCh color 59, 24.934, 11.960.



This preview shows how white text looks on a background with the CIELCh color 59, 24.934, 11.960.

Color Blindness Simulation

Color vision deficiency is a very complex topic, and I could not describe the different causes any better than Wikipedia does, so if you want to learn more, you should check out their [article about color blindness](#).

Dichromacy



Original Color

59, 24.934, 11.960

Protanopia

59, 1.308, 353.594

Deuteranopia

59, 9.807, 36.894



Tritanopia
59, 24.968, 10.684

Trichromacy



Original Color
59, 24.934, 11.960

Protanomaly
59, 9.842, 7.186

Deuteranomaly
59, 14.734, 20.925

Tritanomaly
59, 24.968, 10.684

Monochromacy



Original Color
59, 24.934, 11.960

Achromatopsia
60, 0.008, 296.813

Achromatomaly
60, 8.926, 9.405

CSS Examples

Text

The CSS property to change the color of the text to CIELCh 59, 24.934, 11.960 is called "color". The color property can be set on classes, ids or directly on the HTML element.

This example shows how text in the color `rgb(186, 126, 134)` looks like.

```
.text, #text, p{  
    color:rgb(186, 126, 134)  
}
```

If you want to add a text shadow in that color use the text-shadow property, you can generate a text shadow directly with our [CSS Text Shadow Generator](#).

Here you see how black text with a 4 pixel rgb(186, 126, 134) colored shadow looks like.

```
.shadow{ text-shadow: 4px 4px 2px rgb(186, 126, 134) }
```

Border

The CSS property to change the border of an element to CIELCh 59, 24.934, 11.960 is called "border". The border property can be set on classes, ids or directly on the HTML element.

This example shows the color as border, it can be applied via the CSS property "border" or "border-color".

```
.border, #border, table{ border:4px solid rgb(186, 126, 134) }
```

If only the border color should be changed use the property border-color.

```
.border{ border-color:rgb(186, 126, 134) }
```

If you want to add a box shadow in that color use:

Here you see how a box with a 4 pixel rgb(186, 126, 134) colored shadow looks like.

```
.boxshadow{ -moz-box-shadow:4px 4px 4px  
4px rgb(186, 126, 134); -webkit-box-  
shadow:4px 4px 4px 4px rgb(186, 126, 134);  
box-shadow:4px 4px 4px 4px rgb(186, 126,  
134) }
```

Background

The CSS property to change the background color of an element to CIELCh 59, 24.934, 11.960 is called "background". The background property can be set on classes, ids or directly on the HTML element.

```
.background, #background, body{  
background: rgb(186, 126, 134) }
```

If only the background color should be changed can be used:

```
.background{ background-color: rgb(186,  
126, 134) }
```

This example shows the color as background, it is applied via the CSS property "background".

To optimize and compress your CSS code, you can use our [online CSS compressor and optimizer](#) based on csstidy. If you want to create a linear or radial gradient as background or border, check our [CSS Gradient Generator](#).

Hey! You found this booklet interesting? Support Converting Colors with the new Membership Option!

The pro membership hides all ads, plus gives you double the colors in the color bucket, and more awesome pro features!

[Learn more, Memberships starting at \\$2.50/m!](#)

**Follow me
on Twitter!**

@ConvertingColor