

Converting Colors

CIELCh(59, 30.001, 26.472)

Have a look what the booklet for
CIELCh(59, 30.001, 26.472) contains.

CIELCh(59, 30.337, 25.863)	3
<i>Conversions</i>	4
<i>Details</i>	6
<i>Harmonies</i>	11
<i>Previews</i>	20
<i>Color Blindness Simulation</i>	23
<i>CSS Examples</i>	26

Color

CIELCh(59, 30.337, 25.863)

Conversions

Conversions Part 1

Format	Color
Hex	C27B78
RGB	194, 123, 120
RGB Percent	76%, 48%, 47%
CMY	0.2388, 0.5173, 0.5291
CMYK	0.00, 0.37, 0.38, 0.24
HSL	2°, 38%, 62%
HSV	2°, 38%, 76%
XYZ	32.7619, 27.0277, 21.2866
YIQ	143.8870, 43.2790, 14.1190

Conversions

Conversions Part 2

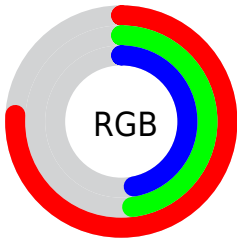
Format	Color
RYB	194, 123, 120
Decimal	12745592
CIELab	59.00, 27.30, 13.23
CIELCh	59, 30.337, 25.863
Yxy	27.0277, 0.4041, 0.3334
Android (android.graphics.Color)	4290935672 (0xFFC27B78)
YUV	143.8870, -11.7763, 43.9491
Hunter-Lab	51.9882, 21.5075, 12.1155

Details

The CIELCh color **59, 30.337, 25.863** is a dark color, and the websafe version is hex **996666**. A complement of this color would be **73, 23.078, 201.767**, and the grayscale version is **60, 0.008, 296.813**.

A 20% lighter version of the original color is **79, 30.286, 25.904**, and **39, 30.290, 25.373** is the 20% darker color. If you saturate the color by 10%, you get **54, 39.644, 27.332**, and if you desaturate by 10%, it is **64, 21.546, 24.755**.

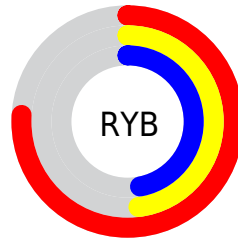
Distribution



Red (76%)

Green (48%)

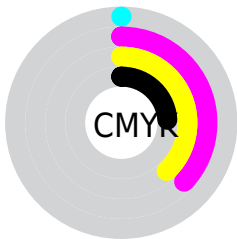
Blue (47%)



Red (76%)

Yellow (48%)

Blue (47%)

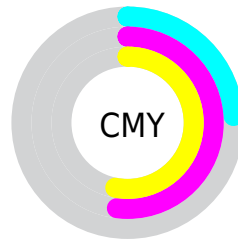


Cyan (0%)

Magenta (37%)

Yellow (38%)

Black (24%)



Cyan (24%)

Magenta (52%)

Yellow (53%)

Brightness & Saturation Gradients

These gradients show how the CIELCh color 59, 30.337, 25.863 changes by changing the brightness by 10 percent. The first figure shows a shift by +10% for each color and the second figure -10%.

Similar to the brightness gradients but the following saturation gradients show a change of the CIELCh color 59, 30.337, 25.863 by changing the saturation by 10% instead.

■ 59, 30.337, 25.863

■ 59, 30.337, 25.863

■ 100, 30.337,
25.863

■ 49, 30.337, 25.863

■ 79, 30.337, 25.863

■ 39, 30.337, 25.863

■ 89, 30.337, 25.863

■ 29, 30.337, 25.863

■ 99, 30.337, 25.863

■ 19, 30.337, 25.863

■ 9, 30.337, 25.863

■ 0, 30.337, 25.863

■ 59, 30.337, 25.863

■ 59, 30.337, 25.863

■ 54, 39.644, 27.332

■ 64, 21.546, 24.755

■ 50, 49.325, 29.240

■ 69, 13.347, 23.909

47, 59.131, 31.655

74, 5.750, 23.233

44, 68.678, 34.530

79, 1.270, 203.288

42, 77.248, 37.511

85, 7.756, 202.581

41, 83.539, 39.878

90, 13.761,
202.289

41, 84.608, 40.402

96, 19.365,
200.613

96, 19.885,
198.195

Harmonies

Complementary

The Complementary color scheme is a pair of colors which are on the opposite of each other on the color wheel.



59, 30.337, 25.863



73, 23.078, 201.767

Rectangle

The Rectangle color scheme consists of four colors that form a rectangle on the color wheel.



59, 30.337, 25.863



59, 30.337, 75.863



59, 30.337, 205.863



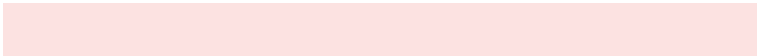
59, 30.337, 255.863

Sweetspot

The Sweet Spot groups the original color and five complimentary colors.



59, 30.335, 25.867



92, 9.748, 23.430



61, 47.419, 327.422



49, 6.640, 23.521



0, 0.000, 0.000



53, 0.007, 296.813

Same Dimension

The Same Dimension uses a secret algorithm to generate beautiful new colors.



59, 30.335, 25.867



71, 46.688, 27.102



68, 26.400, 74.053



38, 4.024, 23.313



33, 73.172, 40.279



3, 13.629, 21.688

Inverse Universe

The Inverse Universe completely reimagines the original color for something new.



73, 23.078, 201.767



91, 33.040, 201.658



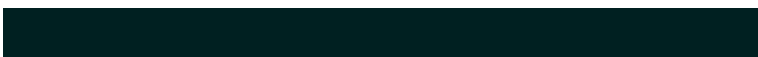
63, 24.248, 265.420



40, 3.791, 202.641



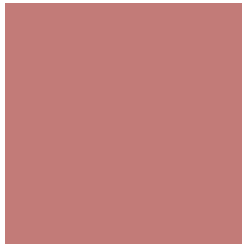
58, 33.591, 202.958



10, 11.886, 201.419

Previews

White Background



This preview shows how the CIELCh color 59, 30.337, 25.863 looks on a white background.

Color Contrast Check

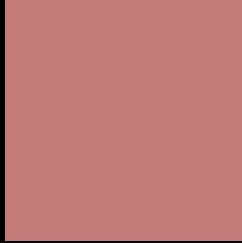
Large Text (above 18pt) WCAG AA ✓ Pass

Any Text WCAG AA ✗ Fail

Large Text (above 18pt) WCAG AAA ✗ Fail

Any Text WCAG AAA ✗ Fail

Black Background



This preview shows how the CIELCh color 59, 30.337, 25.863 looks on a black background.

Color Contrast Check

Large Text (above 18pt) WCAG AA ✓ Pass

Any Text WCAG AA ✓ Pass

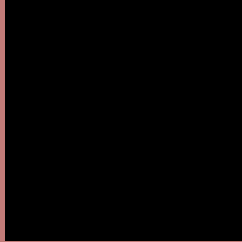
Large Text (above 18pt) WCAG AAA ✓ Pass

Any Text WCAG AAA × Fail

If you want to check with other color combinations, try the [Color Contrast Checker](#).

CIELCh 59, 30.337, 25.863

Background



This preview shows how black text looks on a background with the CIELCh color 59, 30.337, 25.863.

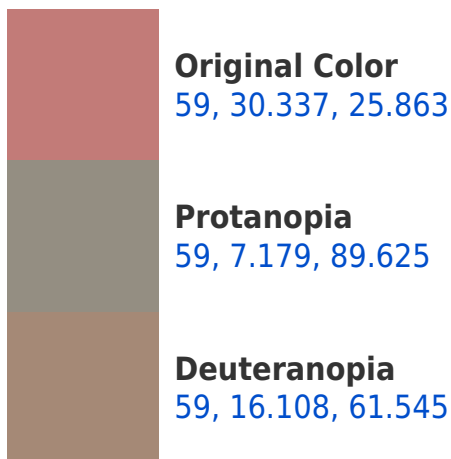


This preview shows how white text looks on a background with the CIELCh color 59, 30.337, 25.863.

Color Blindness Simulation

Color vision deficiency is a very complex topic, and I could not describe the different causes any better than Wikipedia does, so if you want to learn more, you should check out their [article about color blindness](#).

Dichromacy





Tritanopia
59, 30.909, 12.742

Trichromacy



Original Color
59, 30.337, 25.863

Protanomaly
59, 13.525, 42.432

Deuteranomaly
59, 20.280, 42.079

Tritanomaly
59, 30.543, 17.739

Monochromacy



Original Color
59, 30.337, 25.863

Achromatopsia
60, 0.008, 296.813

Achromatomaly
59, 10.554, 23.487

CSS Examples

Text

The CSS property to change the color of the text to CIELCh 59, 30.337, 25.863 is called "color". The color property can be set on classes, ids or directly on the HTML element.

This example shows how text in the color `rgb(194, 123, 120)` looks like.

```
.text, #text, p{  
    color:rgb(194, 123, 120)  
}
```

If you want to add a text shadow in that color use the text-shadow property, you can generate a text shadow directly with our [CSS Text Shadow Generator](#).

Here you see how black text with a 4 pixel rgb(194, 123, 120) colored shadow looks like.

```
.shadow{ text-shadow: 4px 4px 2px rgb(194, 123, 120) }
```

Border

The CSS property to change the border of an element to CIELCh 59, 30.337, 25.863 is called "border". The border property can be set on classes, ids or directly on the HTML element.

This example shows the color as border, it can be applied via the CSS property "border" or "border-color".

```
.border, #border, table{ border:4px solid rgb(194, 123, 120) }
```

If only the border color should be changed use the property `border-color`.

```
.border{ border-color:rgb(194, 123, 120) }
```

If you want to add a box shadow in that color use:

Here you see how a box with a 4 pixel `rgb(194, 123, 120)` colored shadow looks like.

```
.boxshadow{ -moz-box-shadow:4px 4px 4px  
4px rgb(194, 123, 120); -webkit-box-  
shadow:4px 4px 4px 4px rgb(194, 123, 120);  
box-shadow:4px 4px 4px 4px rgb(194, 123,  
120) }
```

Background

The CSS property to change the background color of an element to CIELCh 59, 30.337, 25.863 is called "background". The background property can be set on classes, ids or directly on the HTML element.

```
.background, #background, body{  
background: rgb(194, 123, 120) }
```

If only the background color should be changed can be used:

```
.background{ background-color: rgb(194,  
123, 120) }
```

This example shows the color as background, it is applied via the CSS property "background".

To optimize and compress your CSS code, you can use our [online CSS compressor and optimizer](#) based on csstidy. If you want to create a linear or radial gradient as background or border, check our [CSS Gradient Generator](#).

Hey! You found this booklet interesting? Support Converting Colors with the new Membership Option!

The pro membership hides all ads, plus gives you double the colors in the color bucket, and more awesome pro features!

[Learn more, Memberships starting at \\$2.50/m!](#)

**Follow me
on Twitter!**

@ConvertingColor