

Converting Colors

CIELCh(59, 32.956, 60.801)

Have a look what the booklet for
CIELCh(59, 32.956, 60.801) contains.

CIELCh(59, 33.106, 60.416)	3
<i>Conversions</i>	4
<i>Details</i>	6
<i>Harmonies</i>	11
<i>Previews</i>	20
<i>Color Blindness Simulation</i>	23
<i>CSS Examples</i>	26

Color

CIELCh(59, 33.106, 60.416)

Conversions

Conversions Part 1

Format	Color
Hex	B8825C
RGB	184, 130, 92
RGB Percent	72%, 51%, 36%
CMY	0.2774, 0.4892, 0.6383
CMYK	0.00, 0.29, 0.50, 0.28
HSL	25°, 39%, 54%
HSV	25°, 50%, 72%
XYZ	29.7858, 27.0277, 13.8239
YIQ	141.8140, 44.3820, -0.3700

Conversions

Conversions Part 2

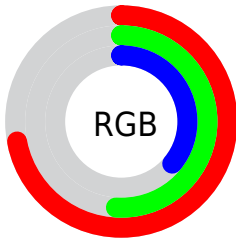
Format	Color
RYB	184, 157, 92
Decimal	12091996
CIELab	59.00, 16.34, 28.79
CIELCh	59, 33.106, 60.416
Yxy	27.0277, 0.4217, 0.3826
Android (android.graphics.Color)	4290282076 (0xFFB8825C)
YUV	141.8140, -24.5583, 36.9971
Hunter-Lab	51.9882, 11.2893, 20.6263

Details

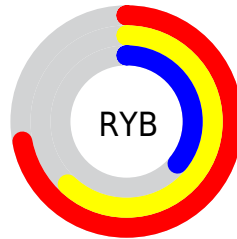
The CIELCh color **59, 33.106, 60.416** is a dark color, and the websafe version is hex **CC9966**. A complement of this color would be **58, 26.344, 254.128**, and the grayscale version is **59, 0.008, 296.813**.

A 20% lighter version of the original color is **79, 32.963, 60.257**, and **39, 33.081, 60.041** is the 20% darker color. If you saturate the color by 10%, you get **56, 40.899, 59.493**, and if you desaturate by 10%, it is **62, 25.675, 61.372**.

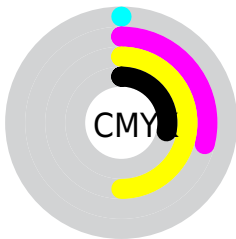
Distribution



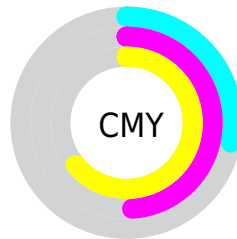
- Red (72%)
- Green (51%)
- Blue (36%)



- Red (72%)
- Yellow (62%)
- Blue (36%)



- Cyan (0%)
- Magenta (29%)
- Yellow (50%)
- Black (28%)



- Cyan (28%)
- Magenta (49%)
- Yellow (64%)

Brightness & Saturation Gradients

These gradients show how the CIELCh color 59, 33.106, 60.416 changes by changing the brightness by 10 percent. The first figure shows a shift by +10% for each color and the second figure -10%.

Similar to the brightness gradients but the following saturation gradients show a change of the CIELCh color 59, 33.106, 60.416 by changing the saturation by 10% instead.

■ 59, 33.106, 60.416

■ 59, 33.106, 60.416

■ 100, 33.106,
60.416

■ 49, 33.106, 60.416

■ 79, 33.106, 60.416

■ 39, 33.106, 60.416

■ 89, 33.106, 60.416

■ 29, 33.106, 60.416

■ 99, 33.106, 60.416

■ 19, 33.106, 60.416

■ 9, 33.106, 60.416

■ 0, 33.106, 60.416

■ 59, 33.106, 60.416

■ 59, 33.106, 60.416

■ 56, 40.899, 59.493

■ 62, 25.675, 61.372

■ 53, 48.908, 58.545

■ 65, 18.655, 62.356

51, 56.792, 57.461

68, 12.048, 63.362

48, 63.857, 55.981

72, 5.828, 64.362

46, 69.593, 54.031

75, 0.036, 256.893

46, 69.624, 54.024

78, 5.580, 246.584

82, 10.841,
247.572

85, 15.852,
248.561

88, 19.555,
246.094

Harmonies

Complementary

The Complementary color scheme is a pair of colors which are on the opposite of each other on the color wheel.



59, 33.106, 60.416



58, 26.344, 254.128

Rectangle

The Rectangle color scheme consists of four colors that form a rectangle on the color wheel.



59, 33.106, 60.416



59, 33.106, 110.416



59, 33.106, 240.416



59, 33.106, 290.416

Sweetspot

The Sweet Spot groups the original color and five complimentary colors.



59, 33.105, 60.421



89, 11.058, 63.836



52, 45.909, 343.167



46, 7.588, 63.625



97, 0.011, 296.813



50, 0.007, 296.813

Same Dimension

The Same Dimension uses a secret algorithm to generate beautiful new colors.



59, 33.105, 60.421



71, 50.832, 59.395



71, 44.017, 100.528



37, 3.303, 64.421



39, 61.190, 54.547



5, 8.718, 52.021

Inverse Universe

The Inverse Universe completely reimagines the original color for something new.



58, 26.344, 254.128



71, 38.208, 257.416



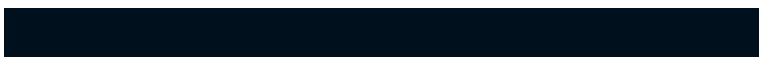
46, 49.112, 293.493



37, 3.191, 246.601



38, 41.366, 273.391



4, 9.428, 259.255

Previews

White Background



This preview shows how the CIELCh color 59, 33.106, 60.416 looks on a white background.

Color Contrast Check

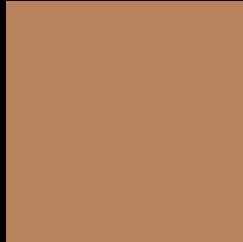
Large Text (above 18pt) WCAG AA ✓ Pass

Any Text WCAG AA × Fail

Large Text (above 18pt) WCAG AAA × Fail

Any Text WCAG AAA × Fail

Black Background



This preview shows how the CIELCh color 59, 33.106, 60.416 looks on a black background.

Color Contrast Check

Large Text (above 18pt) WCAG AA ✓ Pass

Any Text WCAG AA ✓ Pass

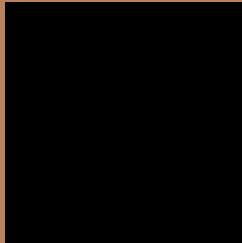
Large Text (above 18pt) WCAG AAA ✓ Pass

Any Text WCAG AAA × Fail

If you want to check with other color combinations, try the [Color Contrast Checker](#).

CIELCh 59, 33.106, 60.416

Background



This preview shows how black text looks on a background with the CIELCh color 59, 33.106, 60.416.



This preview shows how white text looks on a background with the CIELCh color 59, 33.106, 60.416.

Color Blindness Simulation

Color vision deficiency is a very complex topic, and I could not describe the different causes any better than Wikipedia does, so if you want to learn more, you should check out their [article about color blindness](#).

Dichromacy



Original Color

59, 33.106, 60.416

Protanopia

59, 25.735, 95.466

Deuteranopia

59, 30.092, 75.769



Tritanopia
59, 26.228, 11.424

Trichromacy



Original Color
59, 33.106, 60.416

Protanomaly
59, 27.148, 81.167

Deuteranomaly
59, 31.164, 70.037

Tritanomaly
59, 26.159, 31.815

Monochromacy



Original Color
59, 33.106, 60.416

Achromatopsia
59, 0.008, 296.813

Achromatomaly
59, 11.203, 64.550

CSS Examples

Text

The CSS property to change the color of the text to CIELCh 59, 33.106, 60.416 is called "color". The color property can be set on classes, ids or directly on the HTML element.

This example shows how text in the color `rgb(184, 130, 92)` looks like.

```
.text, #text, p{  
    color:rgb(184, 130, 92)  
}
```

If you want to add a text shadow in that color use the text-shadow property, you can generate a text shadow directly with our [CSS Text Shadow Generator](#).

Here you see how black text with a 4 pixel rgb(184, 130, 92) colored shadow looks like.

```
.shadow{ text-shadow: 4px 4px 2px rgb(184, 130, 92) }
```

Border

The CSS property to change the border of an element to CIELCh 59, 33.106, 60.416 is called "border". The border property can be set on classes, ids or directly on the HTML element.

This example shows the color as border, it can be applied via the CSS property "border" or "border-color".

```
.border, #border, table{ border:4px solid rgb(184, 130, 92) }
```

If only the border color should be changed use the property border-color.

```
.border{ border-color:rgb(184, 130, 92) }
```

If you want to add a box shadow in that color use:

Here you see how a box with a 4 pixel rgb(184, 130, 92) colored shadow looks like.

```
.boxshadow{ -moz-box-shadow:4px 4px 4px  
4px rgb(184, 130, 92); -webkit-box-  
shadow:4px 4px 4px 4px rgb(184, 130, 92);  
box-shadow:4px 4px 4px 4px rgb(184, 130,  
92) }
```

Background

The CSS property to change the background color of an element to CIELCh 59, 33.106, 60.416 is called "background". The background property can be set on classes, ids or directly on the HTML element.

```
.background, #background, body{  
background: rgb(184, 130, 92) }
```

If only the background color should be changed can be used:

```
.background{ background-color: rgb(184,  
130, 92) }
```

This example shows the color as background, it is applied via the CSS property "background".

To optimize and compress your CSS code, you can use our [online CSS compressor and optimizer](#) based on csstidy. If you want to create a linear or radial gradient as background or border, check our [CSS Gradient Generator](#).

Hey! You found this booklet interesting? Support Converting Colors with the new Membership Option!

The pro membership hides all ads, plus gives you double the colors in the color bucket, and more awesome pro features!

[Learn more, Memberships starting at \\$2.50/m!](#)

**Follow me
on Twitter!**

@ConvertingColor