

Converting Colors

CIELCh(59, 33.808, 56.882)

Have a look what the booklet for
CIELCh(59, 33.808, 56.882) contains.

CIELCh(59, 33.806, 57.327)	3
<i>Conversions</i>	4
<i>Details</i>	6
<i>Harmonies</i>	11
<i>Previews</i>	20
<i>Color Blindness Simulation</i>	23
<i>CSS Examples</i>	26

Color

CIELCh(59, 33.806, 57.327)

Conversions

Conversions Part 1

Format	Color
Hex	BB815D
RGB	187, 129, 93
RGB Percent	73%, 51%, 36%
CMY	0.2670, 0.4944, 0.6355
CMYK	0.00, 0.31, 0.50, 0.27
HSL	23°, 41%, 55%
HSV	23°, 50%, 73%
XYZ	30.2900, 27.0277, 13.9619
YIQ	142.2380, 46.1240, 1.1000

Conversions

Conversions Part 2

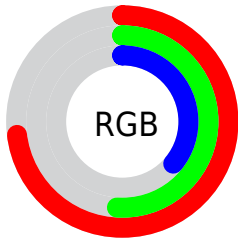
Format	Color
R_{YB}	187, 151, 93
Decimal	12288349
CIE _{Lab}	59.00, 18.25, 28.46
CIE _{LCh}	59, 33.806, 57.327
Yxy	27.0277, 0.4249, 0.3792
Android (android.graphics.Color)	4290478429 (0xFFBB815D)
YUV	142.2380, -24.2743, 39.2563
Hunter-Lab	51.9882, 13.0204, 20.4689

Details

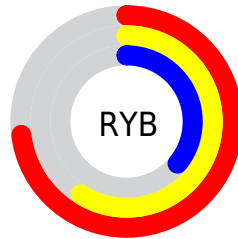
The CIELCh color **59, 33.806, 57.327** is a dark color, and the websafe version is hex **CC9966**. A complement of this color would be **60, 26.091, 250.144**, and the grayscale version is **59, 0.008, 296.813**.

A 20% lighter version of the original color is **79, 33.595, 57.279**, and **39, 33.909, 56.860** is the 20% darker color. If you saturate the color by 10%, you get **56, 41.821, 56.575**, and if you desaturate by 10%, it is **62, 26.197, 58.134**.

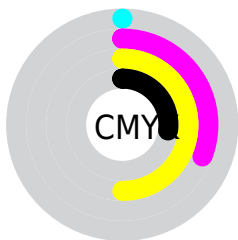
Distribution



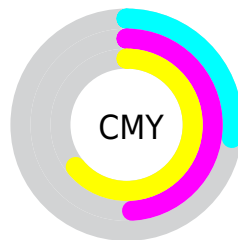
- Red (73%)
- Green (51%)
- Blue (36%)



- Red (73%)
- Yellow (59%)
- Blue (36%)



- Cyan (0%)
- Magenta (31%)
- Yellow (50%)
- Black (27%)



- Cyan (27%)
- Magenta (49%)
- Yellow (64%)

Brightness & Saturation Gradients

These gradients show how the CIELCh color 59, 33.806, 57.327 changes by changing the brightness by 10 percent. The first figure shows a shift by +10% for each color and the second figure -10%.

Similar to the brightness gradients but the following saturation gradients show a change of the CIELCh color 59, 33.806, 57.327 by changing the saturation by 10% instead.

■ 59, 33.806, 57.327

■ 59, 33.806, 57.327

■ 100, 33.806,
57.327

■ 49, 33.806, 57.327

■ 79, 33.806, 57.327

■ 39, 33.806, 57.327

■ 89, 33.806, 57.327

■ 29, 33.806, 57.327

■ 99, 33.806, 57.327

■ 19, 33.806, 57.327

■ 9, 33.806, 57.327

■ 0, 33.806, 57.327

■ 59, 33.806, 57.327

■ 59, 33.806, 57.327

■ 56, 41.821, 56.575

■ 62, 26.197, 58.134

■ 53, 50.099, 55.822

■ 65, 19.041, 58.987

50, 58.291, 54.951

69, 12.335, 59.879

48, 65.673, 53.684

72, 6.052, 60.780

46, 71.550, 52.009

76, 0.155, 59.010

79, 5.396, 242.850

83, 10.640,
243.767

86, 15.614,
244.697

90, 18.419,
237.831

Harmonies

Complementary

The Complementary color scheme is a pair of colors which are on the opposite of each other on the color wheel.



59, 33.806, 57.327



60, 26.091, 250.144

Rectangle

The Rectangle color scheme consists of four colors that form a rectangle on the color wheel.



59, 33.806, 57.327



59, 33.806, 107.327



59, 33.806, 237.327



59, 33.806, 287.327

Sweetspot

The Sweet Spot groups the original color and five complimentary colors.



59, 33.805, 57.332



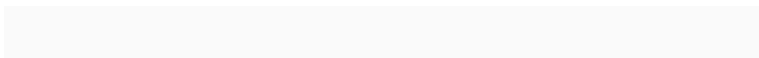
89, 11.078, 60.336



53, 47.687, 341.451



47, 7.672, 60.144



98, 0.011, 296.813



51, 0.007, 296.813

Same Dimension

The Same Dimension uses a secret algorithm to generate beautiful new colors.



59, 33.805, 57.332



71, 51.491, 56.524



71, 43.539, 98.604



38, 3.352, 60.860



39, 62.946, 52.503



5, 10.105, 47.497

Inverse Universe

The Inverse Universe completely reimagines the original color for something new.



60, 26.091, 250.144



72, 37.288, 253.249



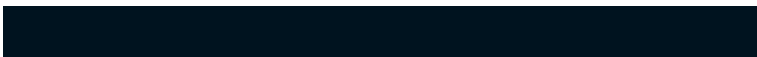
47, 48.079, 292.085



38, 3.224, 242.897



40, 39.489, 269.272



5, 10.302, 256.685

Previews

White Background



This preview shows how the CIELCh color 59, 33.806, 57.327 looks on a white background.

Color Contrast Check

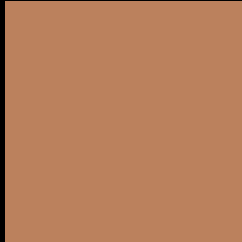
Large Text (above 18pt) WCAG AA ✓ Pass

Any Text WCAG AA × Fail

Large Text (above 18pt) WCAG AAA × Fail

Any Text WCAG AAA × Fail

Black Background



This preview shows how the CIELCh color 59, 33.806, 57.327 looks on a black background.

Color Contrast Check

Large Text (above 18pt) WCAG AA ✓ Pass

Any Text WCAG AA ✓ Pass

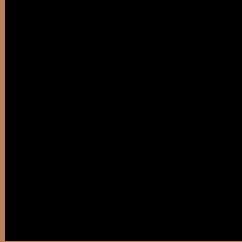
Large Text (above 18pt) WCAG AAA ✓ Pass

Any Text WCAG AAA × Fail

If you want to check with other color combinations, try the [Color Contrast Checker](#).

CIELCh 59, 33.806, 57.327

Background



This preview shows how black text looks on a background with the CIELCh color 59, 33.806, 57.327.



This preview shows how white text looks on a background with the CIELCh color 59, 33.806, 57.327.

Color Blindness Simulation

Color vision deficiency is a very complex topic, and I could not describe the different causes any better than Wikipedia does, so if you want to learn more, you should check out their [article about color blindness](#).

Dichromacy



Original Color

59, 33.806, 57.327

Protanopia

59, 25.197, 95.299

Deuteranopia

59, 29.606, 75.321



Tritanopia
59, 27.494, 12.114

Trichromacy



Original Color
59, 33.806, 57.327

Protanomaly
59, 26.625, 78.598

Deuteranomaly
59, 30.905, 67.708

Tritanomaly
59, 27.498, 31.490

Monochromacy



Original Color
59, 33.806, 57.327

Achromatopsia
59, 0.008, 296.813

Achromatomaly
59, 11.448, 59.714

CSS Examples

Text

The CSS property to change the color of the text to CIELCh 59, 33.806, 57.327 is called "color". The color property can be set on classes, ids or directly on the HTML element.

This example shows how text in the color `rgb(187, 129, 93)` looks like.

```
.text, #text, p{  
    color:rgb(187, 129, 93)  
}
```

If you want to add a text shadow in that color use the text-shadow property, you can generate a text shadow directly with our [CSS Text Shadow Generator](#).

Here you see how black text with a 4 pixel rgb(187, 129, 93) colored shadow looks like.

```
.shadow{ text-shadow: 4px 4px 2px rgb(187, 129, 93) }
```

Border

The CSS property to change the border of an element to CIELCh 59, 33.806, 57.327 is called "border". The border property can be set on classes, ids or directly on the HTML element.

This example shows the color as border, it can be applied via the CSS property "border" or "border-color".

```
.border, #border, table{ border:4px solid rgb(187, 129, 93) }
```

If only the border color should be changed use the property `border-color`.

```
.border{ border-color:rgb(187, 129, 93) }
```

If you want to add a box shadow in that color use:

Here you see how a box with a 4 pixel `rgb(187, 129, 93)` colored shadow looks like.

```
.boxshadow{ -moz-box-shadow:4px 4px 4px  
4px rgb(187, 129, 93); -webkit-box-  
shadow:4px 4px 4px 4px rgb(187, 129, 93);  
box-shadow:4px 4px 4px 4px rgb(187, 129,  
93) }
```

Background

The CSS property to change the background color of an element to CIELCh 59, 33.806, 57.327 is called "background". The background property can be set on classes, ids or directly on the HTML element.

```
.background, #background, body{  
background: rgb(187, 129, 93) }
```

If only the background color should be changed can be used:

```
.background{ background-color: rgb(187,  
129, 93) }
```

This example shows the color as background, it is applied via the CSS property "background".

To optimize and compress your CSS code, you can use our [online CSS compressor and optimizer](#) based on csstidy. If you want to create a linear or radial gradient as background or border, check our [CSS Gradient Generator](#).

Hey! You found this booklet interesting? Support Converting Colors with the new Membership Option!

The pro membership hides all ads, plus gives you double the colors in the color bucket, and more awesome pro features!

[Learn more, Memberships starting at \\$2.50/m!](#)

**Follow me
on Twitter!**

@ConvertingColor