

Converting Colors

CIELCh(59, 34.094, 64.784)

Have a look what the booklet for
CIELCh(59, 34.094, 64.784) contains.

CIELCh(59, 34.151, 64.755)	3
<i>Conversions</i>	4
<i>Details</i>	6
<i>Harmonies</i>	11
<i>Previews</i>	20
<i>Color Blindness Simulation</i>	23
<i>CSS Examples</i>	26

Color

CIELCh(59, 34.151, 64.755)

Conversions

Conversions Part 1

Format	Color
Hex	B68358
RGB	182, 131, 88
RGB Percent	71%, 51%, 35%
CMY	0.2848, 0.4849, 0.6536
CMYK	0.00, 0.28, 0.52, 0.28
HSL	27°, 39%, 53%
HSV	27°, 52%, 72%
XYZ	29.3201, 27.0277, 12.9758
YIQ	141.3470, 44.1990, -2.5610

Conversions

Conversions Part 2

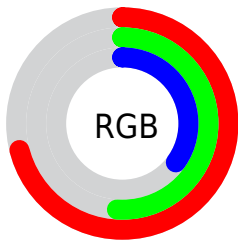
Format	Color
R_{YB}	182, 167, 88
Decimal	11961176
CIE _{Lab}	59.00, 14.57, 30.89
CIE _{LCh}	59, 34.151, 64.755
Yxy	27.0277, 0.4229, 0.3899
Android (android.graphics.Color)	4290151256 (0xFFB68358)
YUV	141.3470, -26.3001, 35.6527
Hunter-Lab	51.9882, 9.6902, 21.5935

Details

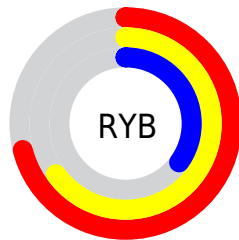
The CIELCh color $59, 34.151, 64.755$ is a dark color, and the websafe version is hex `CC9966`. A complement of this color would be $56, 28.194, 260.233$, and the grayscale version is $59, 0.008, 296.813$.

A 20% lighter version of the original color is $79, 33.959, 64.512$, and $39, 34.116, 65.537$ is the 20% darker color. If you saturate the color by 10%, you get $56, 41.764, 63.618$, and if you desaturate by 10%, it is $62, 26.809, 65.892$.

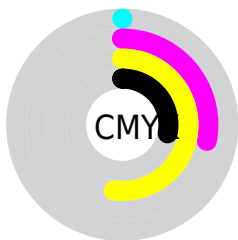
Distribution



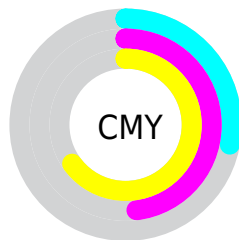
- Red (71%)
- Green (51%)
- Blue (35%)



- Red (71%)
- Yellow (65%)
- Blue (35%)



- Cyan (0%)
- Magenta (28%)
- Yellow (52%)
- Black (28%)



- Cyan (28%)
- Magenta (48%)
- Yellow (65%)

Brightness & Saturation Gradients

These gradients show how the CIELCh color 59, 34.151, 64.755 changes by changing the brightness by 10 percent. The first figure shows a shift by +10% for each color and the second figure -10%.

Similar to the brightness gradients but the following saturation gradients show a change of the CIELCh color 59, 34.151, 64.755 by changing the saturation by 10% instead.

■ 59, 34.151, 64.755

■ 59, 34.151, 64.755

■ 100, 34.151,
64.755

■ 49, 34.151, 64.755

■ 79, 34.151, 64.755

■ 39, 34.151, 64.755

■ 89, 34.151, 64.755

■ 29, 34.151, 64.755

■ 99, 34.151, 64.755

■ 19, 34.151, 64.755

■ 9, 34.151, 64.755

■ 0, 34.151, 64.755

■ 59, 34.151, 64.755

■ 59, 34.151, 64.755

■ 56, 41.764, 63.618

■ 62, 26.809, 65.892

■ 54, 49.465, 62.413

■ 65, 19.810, 67.029

51, 56.856, 61.014

68, 13.171, 68.171

49, 63.191, 59.150

71, 6.877, 69.296

47, 67.537, 57.259

74, 0.903, 70.079

77, 4.780, 251.697

80, 10.205,
252.756

83, 15.400,
253.814

86, 20.393,
254.842

Harmonies

Complementary

The Complementary color scheme is a pair of colors which are on the opposite of each other on the color wheel.



59, 34.151, 64.755



56, 28.194, 260.233

Rectangle

The Rectangle color scheme consists of four colors that form a rectangle on the color wheel.



59, 34.151, 64.755



59, 34.151, 114.755



59, 34.151, 244.755



59, 34.151, 294.755

Sweetspot

The Sweet Spot groups the original color and five complimentary colors.



59, 34.151, 64.760



88, 11.147, 68.886



51, 45.522, 346.175



46, 7.710, 68.649



97, 0.011, 296.813



50, 0.007, 296.813

Same Dimension

The Same Dimension uses a secret algorithm to generate beautiful new colors.



59, 34.151, 64.760



72, 52.227, 63.447



71, 46.949, 102.981



37, 3.366, 69.538



40, 59.860, 57.763



5, 8.716, 56.572

Inverse Universe

The Inverse Universe completely reimagines the original color for something new.



56, 28.194, 260.233



67, 41.225, 263.820



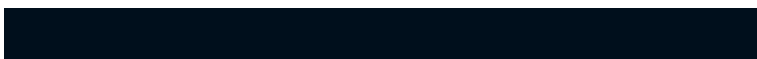
43, 53.474, 295.872



37, 3.274, 251.884



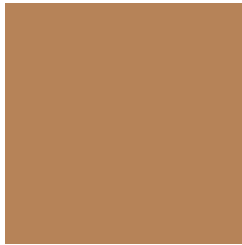
36, 45.238, 278.873



4, 9.816, 263.668

Previews

White Background



This preview shows how the CIELCh color 59, 34.151, 64.755 looks on a white background.

Color Contrast Check

Large Text (above 18pt) WCAG AA ✓ Pass

Any Text WCAG AA × Fail

Large Text (above 18pt) WCAG AAA × Fail

Any Text WCAG AAA × Fail

Black Background



This preview shows how the CIELCh color 59, 34.151, 64.755 looks on a black background.

Color Contrast Check

Large Text (above 18pt) WCAG AA ✓ Pass

Any Text WCAG AA ✓ Pass

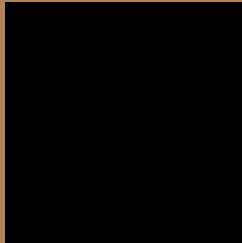
Large Text (above 18pt) WCAG AAA ✓ Pass

Any Text WCAG AAA × Fail

If you want to check with other color combinations, try the [Color Contrast Checker](#).

CIELCh 59, 34.151, 64.755

Background



This preview shows how black text looks on a background with the CIELCh color 59, 34.151, 64.755.



This preview shows how white text looks on a background with the CIELCh color 59, 34.151, 64.755.

Color Blindness Simulation

Color vision deficiency is a very complex topic, and I could not describe the different causes any better than Wikipedia does, so if you want to learn more, you should check out their [article about color blindness](#).

Dichromacy



Original Color

59, 34.151, 64.755

Protanopia

59, 27.977, 95.157

Deuteranopia

59, 32.288, 76.716



Tritanopia
59, 25.454, 9.701

Trichromacy



Original Color
59, 34.151, 64.755

Protanomaly
59, 29.178, 82.665

Deuteranomaly
59, 33.028, 71.927

Tritanomaly
59, 25.484, 33.252

Monochromacy



Original Color
59, 34.151, 64.755

Achromatopsia
59, 0.008, 296.813

Achromatomaly
59, 12.062, 68.087

CSS Examples

Text

The CSS property to change the color of the text to CIELCh 59, 34.151, 64.755 is called "color". The color property can be set on classes, ids or directly on the HTML element.

This example shows how text in the color `rgb(182, 131, 88)` looks like.

```
.text, #text, p{  
    color:rgb(182, 131, 88)  
}
```

If you want to add a text shadow in that color use the text-shadow property, you can generate a text shadow directly with our [CSS Text Shadow Generator](#).

Here you see how black text with a 4 pixel rgb(182, 131, 88) colored shadow looks like.

```
.shadow{ text-shadow: 4px 4px 2px rgb(182, 131, 88) }
```

Border

The CSS property to change the border of an element to CIELCh 59, 34.151, 64.755 is called "border". The border property can be set on classes, ids or directly on the HTML element.

This example shows the color as border, it can be applied via the CSS property "border" or "border-color".

```
.border, #border, table{ border:4px solid rgb(182, 131, 88) }
```

If only the border color should be changed use the property `border-color`.

```
.border{ border-color:rgb(182, 131, 88) }
```

If you want to add a box shadow in that color use:

Here you see how a box with a 4 pixel `rgb(182, 131, 88)` colored shadow looks like.

```
.boxshadow{ -moz-box-shadow:4px 4px 4px  
4px rgb(182, 131, 88); -webkit-box-  
shadow:4px 4px 4px 4px rgb(182, 131, 88);  
box-shadow:4px 4px 4px 4px rgb(182, 131,  
88) }
```

Background

The CSS property to change the background color of an element to CIELCh 59, 34.151, 64.755 is called "background". The background property can be set on classes, ids or directly on the HTML element.

```
.background, #background, body{  
background: rgb(182, 131, 88) }
```

If only the background color should be changed can be used:

```
.background{ background-color: rgb(182,  
131, 88) }
```

This example shows the color as background, it is applied via the CSS property "background".

To optimize and compress your CSS code, you can use our [online CSS compressor and optimizer](#) based on csstidy. If you want to create a linear or radial gradient as background or border, check our [CSS Gradient Generator](#).

Hey! You found this booklet interesting? Support Converting Colors with the new Membership Option!

The pro membership hides all ads, plus gives you double the colors in the color bucket, and more awesome pro features!

[Learn more, Memberships starting at \\$2.50/m!](#)

**Follow me
on Twitter!**

@ConvertingColor