

Converting Colors

CIELCh(59, 40.308, 9.310)

Have a look what the booklet for
CIELCh(59, 40.308, 9.310) contains.

CIELCh(59, 40.240, 9.491)	3
<i>Conversions</i>	4
<i>Details</i>	6
<i>Harmonies</i>	11
<i>Previews</i>	20
<i>Color Blindness Simulation</i>	23
<i>CSS Examples</i>	26

Color

CIELCh(59, 40.240, 9.491)

Conversions

Conversions Part 1

Format	Color
Hex	D17184
RGB	209, 113, 132
RGB Percent	82%, 44%, 52%
CMY	0.1804, 0.5569, 0.4824
CMYK	0.00, 0.46, 0.37, 0.18
HSL	348°, 51%, 63%
HSV	348°, 46%, 82%
XYZ	36.3599, 27.0277, 25.1269
YIQ	143.8700, 51.1170, 26.2610

Conversions

Conversions Part 2

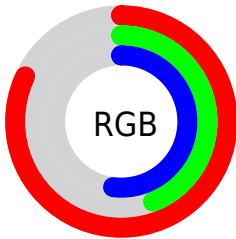
Format	Color
R _Y B	209, 113, 132
Decimal	13726084
CIE Lab	59.00, 39.69, 6.64
CIE LCh	59, 40.240, 9.491
Yxy	27.0277, 0.4108, 0.3053
Android (android.graphics.Color)	4291916164 (0xFFD17184)
YUV	143.8700, -5.8519, 57.1190
Hunter-Lab	51.9882, 33.8613, 7.7358

Details

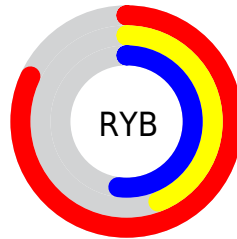
The CIELCh color **59, 40.240, 9.491** is a light color, and the websafe version is hex **CC6666**. A complement of this color would be **78, 32.959, 178.924**, and the grayscale version is **60, 0.008, 296.813**.

A 20% lighter version of the original color is **78, 34.983, 6.997**, and **39, 40.262, 9.554** is the 20% darker color. If you saturate the color by 10%, you get **55, 49.326, 11.783**, and if you desaturate by 10%, it is **64, 31.016, 7.666**.

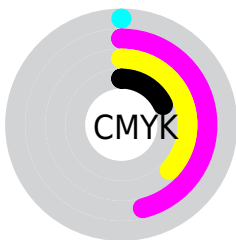
Distribution



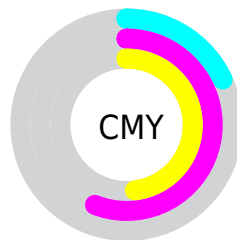
- Red (82%)
- Green (44%)
- Blue (52%)



- Red (82%)
- Yellow (44%)
- Blue (52%)



- Cyan (0%)
- Magenta (46%)
- Yellow (37%)
- Black (18%)




- Cyan (18%)
- Magenta (56%)
- Yellow (48%)

Brightness & Saturation Gradients

These gradients show how the CIELCh color 59, 40.240, 9.491 changes by changing the brightness by 10 percent. The first figure shows a shift by +10% for each color and the second figure -10%.

Similar to the brightness gradients but the following saturation gradients show a change of the CIELCh color 59, 40.240, 9.491 by changing the saturation by 10% instead.

 59, 40.240, 9.491  59, 40.240, 9.491

 100, 40.240, 9.491  49, 40.240, 9.491

 79, 40.240, 9.491  39, 40.240, 9.491


 89, 40.240, 9.491  29, 40.240, 9.491

 99, 40.240, 9.491  19, 40.240, 9.491

 9, 40.240, 9.491

 0, 40.240, 9.491

 59, 40.240, 9.491  59, 40.240, 9.491

 55, 49.326, 11.783  64, 31.016, 7.666

 51, 57.939, 14.682  69, 21.930, 6.180

■ 48, 65.729, 18.339

■ 75, 13.150, 4.942

■ 45, 72.477, 22.836

■ 80, 4.770, 3.843

■ 44, 78.204, 28.035

■ 86, 3.175, 183.240

■ 44, 80.443, 30.102

■ 92, 10.685,
182.358

■ 97, 15.814,
187.839

■ 97, 15.317,
198.486

Harmonies

Complementary

The Complementary color scheme is a pair of colors which are on the opposite of each other on the color wheel.



59, 40.240, 9.491



78, 32.959, 178.924

Rectangle

The Rectangle color scheme consists of four colors that form a rectangle on the color wheel.



59, 40.240, 9.491



59, 40.240, 59.491



59, 40.240, 189.491



59, 40.240, 239.491

Sweetspot

The Sweet Spot groups the original color and five complimentary colors.



59, 40.237, 9.494



91, 13.519, 4.742



59, 59.075, 320.782



47, 9.386, 4.989



0, 0.000, 0.000



53, 0.007, 296.813

Same Dimension

The Same Dimension uses a secret algorithm to generate beautiful new colors.



59, 40.237, 9.494



66, 57.001, 11.706



65, 33.940, 49.168



41, 4.606, 4.223



35, 67.929, 29.198



4, 20.208, 10.306

Inverse Universe

The Inverse Universe completely reimagines the original color for something new.



59, 40.237, 9.494



66, 57.001, 11.706



70, 25.223, 237.188



41, 4.606, 4.223



35, 67.929, 29.198



4, 20.208, 10.306

Previews

White Background



This preview shows how the CIELCh color 59, 40.240, 9.491 looks on a white background.

Color Contrast Check

Large Text (above 18pt) WCAG AA ✓ Pass

Any Text WCAG AA ✗ Fail

Large Text (above 18pt) WCAG AAA ✗ Fail

Any Text WCAG AAA ✗ Fail

Black Background



This preview shows how the CIELCh color 59, 40.240, 9.491 looks on a black background.

Color Contrast Check

Large Text (above 18pt) WCAG AA ✓ Pass

Any Text WCAG AA ✓ Pass

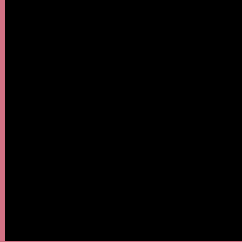
Large Text (above 18pt) WCAG AAA ✓ Pass

Any Text WCAG AAA × Fail

If you want to check with other color combinations, try the [Color Contrast Checker](#).

CIELCh 59, 40.240, 9.491

Background



This preview shows how black text looks on a background with the CIELCh color 59, 40.240, 9.491.

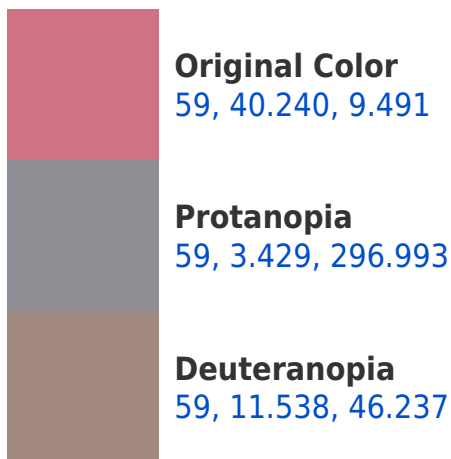


This preview shows how white text looks on a background with the CIELCh color 59, 40.240, 9.491.

Color Blindness Simulation

Color vision deficiency is a very complex topic, and I could not describe the different causes any better than Wikipedia does, so if you want to learn more, you should check out their [article about color blindness](#).

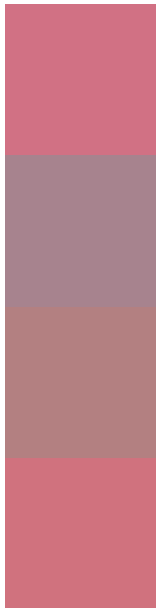
Dichromacy





Tritanopia
59, 39.107, 17.736

Trichromacy



Original Color
59, 40.240, 9.491

Protanomaly
58, 15.610, 357.740

Deuteranomaly
59, 21.169, 20.191

Tritanomaly
59, 39.394, 14.680

Monochromacy



Original Color
59, 40.240, 9.491

Achromatopsia
60, 0.008, 296.813

Achromatomaly
59, 14.571, 5.324

CSS Examples

Text

The CSS property to change the color of the text to CIELCh 59, 40.240, 9.491 is called "color". The color property can be set on classes, ids or directly on the HTML element.

This example shows how text in the color `rgb(209, 113, 132)` looks like.

```
.text, #text, p{  
    color:rgb(209, 113, 132)  
}
```

If you want to add a text shadow in that color use the text-shadow property, you can generate a text shadow directly with our [CSS Text Shadow Generator](#).

Here you see how black text with a 4 pixel rgb(209, 113, 132) colored shadow looks like.

```
.shadow{ text-shadow: 4px 4px 2px rgb(209, 113, 132) }
```

Border

The CSS property to change the border of an element to CIELCh 59, 40.240, 9.491 is called "border". The border property can be set on classes, ids or directly on the HTML element.

This example shows the color as border, it can be applied via the CSS property "border" or "border-color".

```
.border, #border, table{ border:4px solid rgb(209, 113, 132) }
```

If only the border color should be changed use the property border-color.

```
.border{ border-color:rgb(209, 113, 132) }
```

If you want to add a box shadow in that color use:

Here you see how a box with a 4 pixel rgb(209, 113, 132) colored shadow looks like.

```
.boxshadow{ -moz-box-shadow:4px 4px 4px  
4px rgb(209, 113, 132); -webkit-box-  
shadow:4px 4px 4px 4px rgb(209, 113, 132);  
box-shadow:4px 4px 4px 4px rgb(209, 113,  
132) }
```

Background

The CSS property to change the background color of an element to CIELCh 59, 40.240, 9.491 is called "background". The background property can be set on classes, ids or directly on the HTML element.

```
.background, #background, body{  
background: rgb(209, 113, 132) }
```

If only the background color should be changed can be used:

```
.background{ background-color: rgb(209,  
113, 132) }
```

This example shows the color as background, it is applied via the CSS property "background".

To optimize and compress your CSS code, you can use our [online CSS compressor and optimizer](#) based on csstidy. If you want to create a linear or radial gradient as background or border, check our [CSS Gradient Generator](#).

Hey! You found this booklet interesting? Support Converting Colors with the new Membership Option!

The pro membership hides all ads, plus gives you double the colors in the color bucket, and more awesome pro features!

[Learn more, Memberships starting at \\$2.50/m!](#)

**Follow me
on Twitter!**

@ConvertingColor