

Converting Colors

CIELCh(59, 64.042, 5.564)

Have a look what the booklet for
CIELCh(59, 64.042, 5.564) contains.

CIELCh(59, 64.042, 5.564)	3
<i>Conversions</i>	4
<i>Details</i>	6
<i>Harmonies</i>	11
<i>Previews</i>	20
<i>Color Blindness Simulation</i>	23
<i>CSS Examples</i>	26

Color

CIELCh(59, 64.042, 5.564)

Conversions

Conversions Part 1

Format	Color
Hex	F25586
RGB	242, 85, 134
RGB Percent	95%, 33%, 53%
CMY	0.0517, 0.6674, 0.4751
CMYK	0.00, 0.65, 0.45, 0.05
HSL	341°, 86%, 64%
HSV	341°, 65%, 95%
XYZ	44.0774, 27.0277, 25.3895
YIQ	137.5290, 77.8430, 48.5230

Conversions

Conversions Part 2

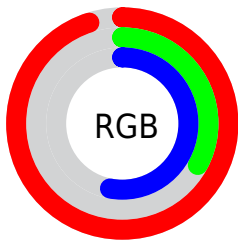
Format	Color
R _Y B	242, 85, 134
Decimal	15881606
CIE Lab	59.00, 63.74, 6.21
CIE LCh	59, 64.042, 5.564
Yxy	27.0277, 0.4568, 0.2801
Android (android.graphics.Color)	4294071686 (0xFF25586)
YUV	137.5290, -1.7398, 91.6211
Hunter-Lab	51.9882, 60.3589, 7.4362

Details

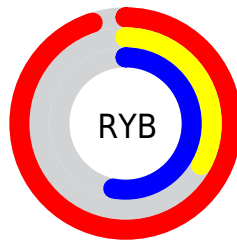
The CIELCh color **59, 64.042, 5.564** is a light color, and the websafe version is hex **FF6699**. The color can be described as light muted rose. A complement of this color would be **87, 53.671, 167.394**, and the grayscale version is **57, 0.007, 296.813**.

A 20% lighter version of the original color is **72, 47.985, 354.766**, and **39, 64.160, 5.450** is the 20% darker color. If you saturate the color by 10%, you get **56, 71.700, 8.891**, and if you desaturate by 10%, it is **63, 55.044, 2.947**.

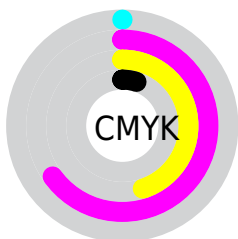
Distribution



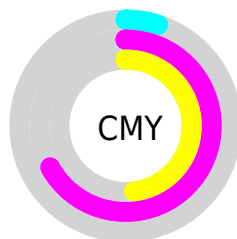
- Red (95%)
- Green (33%)
- Blue (53%)



- Red (95%)
- Yellow (33%)
- Blue (53%)



- Cyan (0%)
- Magenta (65%)
- Yellow (45%)
- Black (5%)



- Cyan (5%)
- Magenta (67%)
- Yellow (48%)

Brightness & Saturation Gradients

These gradients show how the CIELCh color 59, 64.042, 5.564 changes by changing the brightness by 10 percent. The first figure shows a shift by +10% for each color and the second figure -10%.

Similar to the brightness gradients but the following saturation gradients show a change of the CIELCh color 59, 64.042, 5.564 by changing the saturation by 10% instead.

 59, 64.042, 5.564

 59, 64.042, 5.564

 100, 64.042, 5.564

 49, 64.042, 5.564

 79, 64.042, 5.564

 39, 64.042, 5.564

 89, 64.042, 5.564

 29, 64.042, 5.564

 99, 64.042, 5.564

 19, 64.042, 5.564

 9, 64.042, 5.564

 0, 64.042, 5.564

 59, 64.042, 5.564

 59, 64.042, 5.564

 56, 71.700, 8.891

 63, 55.044, 2.947

 53, 77.726, 13.093

 68, 45.188, 0.863

■ 52, 82.200, 18.238

■ 74, 34.924,
359.170

■ 51, 84.205, 21.057

■ 80, 24.609,
357.763

■ 86, 14.481,
356.561

■ 92, 4.683, 355.459

■ 99, 4.717, 174.794

■ 99, 4.548, 199.263

Harmonies

Complementary

The Complementary color scheme is a pair of colors which are on the opposite of each other on the color wheel.



59, 64.042, 5.564



87, 53.671, 167.394

Rectangle

The Rectangle color scheme consists of four colors that form a rectangle on the color wheel.



59, 64.042, 5.564



59, 64.042, 55.564



59, 64.042, 185.564



59, 64.042, 235.564

Sweetspot

The Sweet Spot groups the original color and five complimentary colors.



59, 64.038, 5.566



87, 19.399, 357.037



56, 90.152, 317.696



45, 13.417, 357.384



0, 0.000, 0.000



53, 0.007, 296.813

Same Dimension

The Same Dimension uses a secret algorithm to generate beautiful new colors.



59, 64.038, 5.566



57, 76.909, 10.175



63, 61.472, 39.762



47, 5.418, 355.963



39, 68.117, 19.970



8, 28.767, 9.545

Inverse Universe

The Inverse Universe completely reimagines the original color for something new.



59, 64.038, 5.566



57, 76.909, 10.175



80, 36.145, 222.763



47, 5.418, 355.963



39, 68.117, 19.970



8, 28.767, 9.545

Previews

White Background



This preview shows how the CIELCh color 59, 64.042, 5.564 looks on a white background.

Color Contrast Check

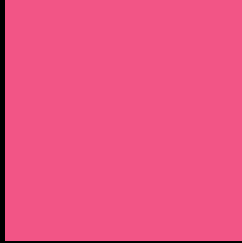
Large Text (above 18pt) WCAG AA ✓ Pass

Any Text WCAG AA ✗ Fail

Large Text (above 18pt) WCAG AAA ✗ Fail

Any Text WCAG AAA ✗ Fail

Black Background



This preview shows how the CIELCh color 59, 64.042, 5.564 looks on a black background.

Color Contrast Check

Large Text (above 18pt) WCAG AA ✓ Pass

Any Text WCAG AA ✓ Pass

Large Text (above 18pt) WCAG AAA ✓ Pass

Any Text WCAG AAA × Fail

If you want to check with other color combinations, try the [Color Contrast Checker](#).

CIELCh 59, 64.042, 5.564

Background



This preview shows how black text looks on a background with the CIELCh color 59, 64.042, 5.564.

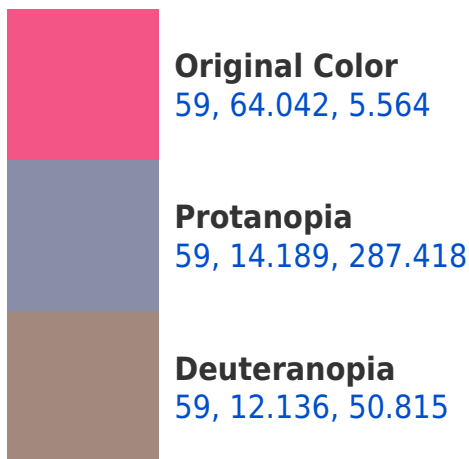


This preview shows how white text looks on a background with the CIELCh color 59, 64.042, 5.564.

Color Blindness Simulation

Color vision deficiency is a very complex topic, and I could not describe the different causes any better than Wikipedia does, so if you want to learn more, you should check out their [article about color blindness](#).

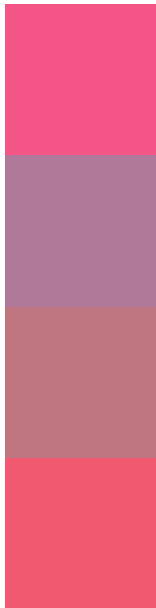
Dichromacy





Tritanopia
59, 62.998, 25.210

Trichromacy



Original Color
59, 64.042, 5.564

Protanomaly
57, 28.119, 341.179

Deuteranomaly
58, 30.639, 11.593

Tritanomaly
59, 62.571, 17.914

Monochromacy



Original Color
59, 64.042, 5.564

Achromatopsia
57, 0.007, 296.813

Achromatomaly
56, 25.000, 358.470

CSS Examples

Text

The CSS property to change the color of the text to CIELCh 59, 64.042, 5.564 is called "color". The color property can be set on classes, ids or directly on the HTML element.

This example shows how text in the color `rgb(242, 85, 134)` looks like.

```
.text, #text, p{  
    color:rgb(242, 85, 134)  
}
```

If you want to add a text shadow in that color use the text-shadow property, you can generate a text shadow directly with our [CSS Text Shadow Generator](#).

Here you see how black text with a 4 pixel rgb(242, 85, 134) colored shadow looks like.

```
.shadow{ text-shadow: 4px 4px 2px rgb(242, 85, 134) }
```

Border

The CSS property to change the border of an element to CIELCh 59, 64.042, 5.564 is called "border". The border property can be set on classes, ids or directly on the HTML element.

This example shows the color as border, it can be applied via the CSS property "border" or "border-color".

```
.border, #border, table{ border:4px solid rgb(242, 85, 134) }
```

If only the border color should be changed use the property border-color.

```
.border{ border-color:rgb(242, 85, 134) }
```

If you want to add a box shadow in that color use:

Here you see how a box with a 4 pixel rgb(242, 85, 134) colored shadow looks like.

```
.boxshadow{ -moz-box-shadow:4px 4px 4px  
4px rgb(242, 85, 134); -webkit-box-  
shadow:4px 4px 4px 4px rgb(242, 85, 134);  
box-shadow:4px 4px 4px 4px rgb(242, 85,  
134) }
```

Background

The CSS property to change the background color of an element to CIELCh 59, 64.042, 5.564 is called "background". The background property can be set on classes, ids or directly on the HTML element.

```
.background, #background, body{  
background: rgb(242, 85, 134) }
```

If only the background color should be changed can be used:

```
.background{ background-color: rgb(242, 85,  
134) }
```

This example shows the color as background, it is applied via the CSS property "background".

To optimize and compress your CSS code, you can use our [online CSS compressor and optimizer](#) based on csstidy. If you want to create a linear or radial gradient as background or border, check our [CSS Gradient Generator](#).

Hey! You found this booklet interesting? Support Converting Colors with the new Membership Option!

The pro membership hides all ads, plus gives you double the colors in the color bucket, and more awesome pro features!

[Learn more, Memberships starting at \\$2.50/m!](#)

**Follow me
on Twitter!**

@ConvertingColor