

Converting Colors

CIELCh(59, 66.446, 5.726)

Have a look what the booklet for
CIELCh(59, 66.446, 5.726) contains.

CIELCh(59, 66.426, 5.809)	3
<i>Conversions</i>	4
<i>Details</i>	6
<i>Harmonies</i>	11
<i>Previews</i>	20
<i>Color Blindness Simulation</i>	23
<i>CSS Examples</i>	26

Color

CIELCh(59, 66.426, 5.809)

Conversions

Conversions Part 1

Format	Color
Hex	F55185
RGB	245, 81, 133
RGB Percent	96%, 32%, 52%
CMY	0.0388, 0.6819, 0.4781
CMYK	0.00, 0.67, 0.46, 0.04
HSL	341°, 89%, 64%
HSV	341°, 67%, 96%
XYZ	44.8833, 27.0277, 25.0730
YIQ	135.9640, 81.0520, 50.9400

Conversions

Conversions Part 2

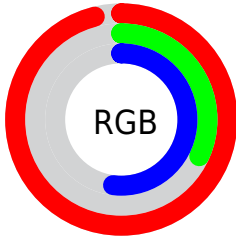
Format	Color
R _Y B	245, 81, 133
Decimal	16077189
CIE Lab	59.00, 66.08, 6.72
CIE LCh	59, 66.426, 5.809
Yxy	27.0277, 0.4628, 0.2787
Android (android.graphics.Color)	4294267269 (0xFFFF55185)
YUV	135.9640, -1.4613, 95.6246
Hunter-Lab	51.9882, 63.1262, 7.7973

Details

The CIELCh color **59, 66.426, 5.809** is a light color, and the websafe version is hex **FF6699**. The color can be described as light muted rose. A complement of this color would be **87, 55.715, 166.723**, and the grayscale version is **57, 0.007, 296.813**.

A 20% lighter version of the original color is **72, 49.375, 354.496**, and **39, 65.809, 5.900** is the 20% darker color. If you saturate the color by 10%, you get **56, 73.804, 9.284**, and if you desaturate by 10%, it is **63, 57.592, 3.078**.

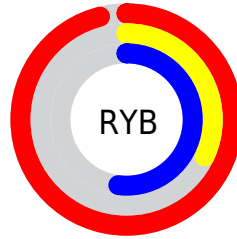
Distribution



Red (96%)

Green (32%)

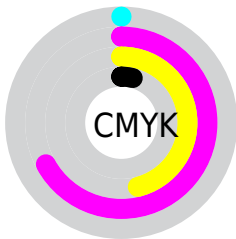
Blue (52%)



Red (96%)

Yellow (32%)

Blue (52%)

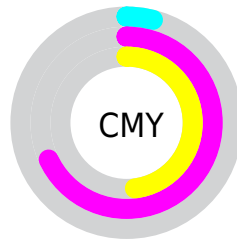


Cyan (0%)

Magenta (67%)

Yellow (46%)

Black (4%)



Cyan (4%)

Magenta (68%)

Yellow (48%)

Brightness & Saturation Gradients

These gradients show how the CIELCh color 59, 66.426, 5.809 changes by changing the brightness by 10 percent. The first figure shows a shift by +10% for each color and the second figure -10%.

Similar to the brightness gradients but the following saturation gradients show a change of the CIELCh color 59, 66.426, 5.809 by changing the saturation by 10% instead.

 59, 66.426, 5.809

 59, 66.426, 5.809

 100, 66.426, 5.809

 49, 66.426, 5.809

 79, 66.426, 5.809

 39, 66.426, 5.809

 89, 66.426, 5.809

 29, 66.426, 5.809

 99, 66.426, 5.809

 19, 66.426, 5.809

 9, 66.426, 5.809

 0, 66.426, 5.809

 59, 66.426, 5.809

 59, 66.426, 5.809

 56, 73.804, 9.284

 63, 57.592, 3.078

 53, 79.490, 13.661

 68, 47.775, 0.908

■ 52, 83.675, 18.967

■ 74, 37.448,
359.153

■ 52, 84.903, 20.672

■ 80, 26.997,
357.700

■ 86, 16.691,
356.466

■ 92, 6.689, 355.365

■ 99, 2.922, 174.716

■ 99, 3.420, 199.382

Harmonies

Complementary

The Complementary color scheme is a pair of colors which are on the opposite of each other on the color wheel.



59, 66.426, 5.809



87, 55.715, 166.723

Rectangle

The Rectangle color scheme consists of four colors that form a rectangle on the color wheel.



59, 66.426, 5.809



59, 66.426, 55.809



59, 66.426, 185.809



59, 66.426, 235.809

Sweetspot

The Sweet Spot groups the original color and five complimentary colors.



59, 66.422, 5.811



87, 20.500, 356.833



56, 93.449, 317.218



44, 14.051, 357.178



0, 0.000, 0.000



53, 0.007, 296.813

Same Dimension

The Same Dimension uses a secret algorithm to generate beautiful new colors.



59, 66.422, 5.811



57, 78.154, 10.607



62, 65.090, 38.864



48, 5.526, 355.645



39, 68.697, 19.600



9, 29.646, 10.114

Inverse Universe

The Inverse Universe completely reimagines the original color for something new.



59, 66.422, 5.811



57, 78.154, 10.607



81, 37.344, 220.406



48, 5.526, 355.645



39, 68.697, 19.600



9, 29.646, 10.114

Previews

White Background



This preview shows how the CIELCh color 59, 66.426, 5.809 looks on a white background.

Color Contrast Check

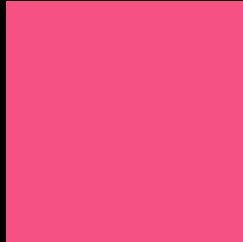
Large Text (above 18pt) WCAG AA ✓ Pass

Any Text WCAG AA ✗ Fail

Large Text (above 18pt) WCAG AAA ✗ Fail

Any Text WCAG AAA ✗ Fail

Black Background



This preview shows how the CIELCh color 59, 66.426, 5.809 looks on a black background.

Color Contrast Check

Large Text (above 18pt) WCAG AA ✓ Pass

Any Text WCAG AA ✓ Pass

Large Text (above 18pt) WCAG AAA ✓ Pass

Any Text WCAG AAA × Fail

If you want to check with other color combinations, try the [Color Contrast Checker](#).

CIELCh 59, 66.426, 5.809

Background



This preview shows how black text looks on a background with the CIELCh color 59, 66.426, 5.809.



This preview shows how white text looks on a background with the CIELCh color 59, 66.426, 5.809.

Color Blindness Simulation

Color vision deficiency is a very complex topic, and I could not describe the different causes any better than Wikipedia does, so if you want to learn more, you should check out their [article about color blindness](#).

Dichromacy



Original Color

59, 66.426, 5.809

Protanopia

59, 14.776, 286.282

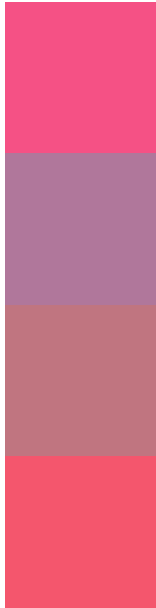
Deuteranopia

59, 12.463, 52.927



Tritanopia
59, 66.014, 25.915

Trichromacy



Original Color
59, 66.426, 5.809

Protanomaly
57, 29.749, 339.738

Deuteranomaly
58, 31.499, 12.047

Tritanomaly
59, 65.260, 18.531

Monochromacy



Original Color
59, 66.426, 5.809

Achromatopsia
57, 0.007, 296.813

Achromatomaly
56, 26.339, 358.629

CSS Examples

Text

The CSS property to change the color of the text to CIELCh 59, 66.426, 5.809 is called "color". The color property can be set on classes, ids or directly on the HTML element.

This example shows how text in the color `rgb(245, 81, 133)` looks like.

```
.text, #text, p{  
    color:rgb(245, 81, 133)  
}
```

If you want to add a text shadow in that color use the text-shadow property, you can generate a text shadow directly with our [CSS Text Shadow Generator](#).

Here you see how black text with a 4 pixel rgb(245, 81, 133) colored shadow looks like.

```
.shadow{ text-shadow: 4px 4px 2px rgb(245, 81, 133) }
```

Border

The CSS property to change the border of an element to CIELCh 59, 66.426, 5.809 is called "border". The border property can be set on classes, ids or directly on the HTML element.

This example shows the color as border, it can be applied via the CSS property "border" or "border-color".

```
.border, #border, table{ border:4px solid rgb(245, 81, 133) }
```

If only the border color should be changed use the property `border-color`.

```
.border{ border-color:rgb(245, 81, 133) }
```

If you want to add a box shadow in that color use:

Here you see how a box with a 4 pixel `rgb(245, 81, 133)` colored shadow looks like.

```
.boxshadow{ -moz-box-shadow:4px 4px 4px  
4px rgb(245, 81, 133); -webkit-box-  
shadow:4px 4px 4px 4px rgb(245, 81, 133);  
box-shadow:4px 4px 4px 4px rgb(245, 81,  
133) }
```

Background

The CSS property to change the background color of an element to CIELCh 59, 66.426, 5.809 is called "background". The background property can be set on classes, ids or directly on the HTML element.

```
.background, #background, body{  
background: rgb(245, 81, 133) }
```

If only the background color should be changed can be used:

```
.background{ background-color: rgb(245, 81,  
133) }
```

This example shows the color as background, it is applied via the CSS property "background".

To optimize and compress your CSS code, you can use our [online CSS compressor and optimizer](#) based on csstidy. If you want to create a linear or radial gradient as background or border, check our [CSS Gradient Generator](#).

Hey! You found this booklet interesting? Support Converting Colors with the new Membership Option!

The pro membership hides all ads, plus gives you double the colors in the color bucket, and more awesome pro features!

[Learn more, Memberships starting at \\$2.50/m!](#)

**Follow me
on Twitter!**

@ConvertingColor