

Converting Colors

CIELCh(59, 72.731, 5.494)

Have a look what the booklet for
CIELCh(59, 72.731, 5.494) contains.

CIELCh(59, 72.530, 5.427)	3
<i>Conversions</i>	4
<i>Details</i>	6
<i>Harmonies</i>	11
<i>Previews</i>	20
<i>Color Blindness Simulation</i>	23
<i>CSS Examples</i>	26

Color

CIELCh(59, 72.530, 5.427)

Conversions

Conversions Part 1

Format	Color
Hex	FD4685
RGB	253, 70, 133
RGB Percent	99%, 27%, 52%
CMY	0.0070, 0.7246, 0.4778
CMYK	0.00, 0.72, 0.47, 0.01
HSL	339°, 98%, 63%
HSV	339°, 72%, 99%
XYZ	47.0332, 27.0277, 24.9893
YIQ	131.8990, 88.8450, 58.3890

Conversions

Conversions Part 2

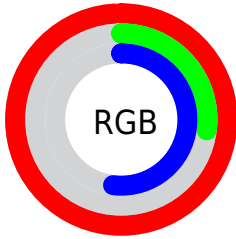
Format	Color
R_{YB}	253, 70, 133
Decimal	16598661
CIE _{Lab}	59.00, 72.20, 6.86
CIE _{LCh}	59, 72.530, 5.427
Yxy	27.0277, 0.4748, 0.2729
Android (android.graphics.Color)	4294788741 (0xFFFD4685)
YUV	131.8990, 0.5428, 106.2056
Hunter-Lab	51.9882, 70.5077, 7.8927

Details

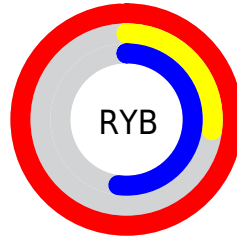
The CIELCh color **59, 72.530, 5.427** is a light color, and the websafe version is hex **FF6699**. The color can be described as light washed rose. A complement of this color would be **90, 62.022, 163.876**, and the grayscale version is **55, 0.007, 296.813**.

A 20% lighter version of the original color is **70, 53.531, 352.477**, and **41, 67.680, 7.682** is the 20% darker color. If you saturate the color by 10%, you get **56, 78.860, 9.249**, and if you desaturate by 10%, it is **63, 64.410, 2.424**.

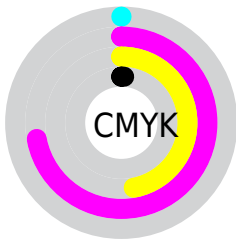
Distribution



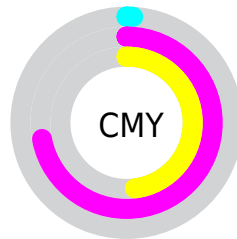
- Red (99%)
- Green (27%)
- Blue (52%)



- Red (99%)
- Yellow (27%)
- Blue (52%)



- Cyan (0%)
- Magenta (72%)
- Yellow (47%)
- Black (1%)



- Cyan (1%)
- Magenta (72%)
- Yellow (48%)

Brightness & Saturation Gradients

These gradients show how the CIELCh color 59, 72.530, 5.427 changes by changing the brightness by 10 percent. The first figure shows a shift by +10% for each color and the second figure -10%.

Similar to the brightness gradients but the following saturation gradients show a change of the CIELCh color 59, 72.530, 5.427 by changing the saturation by 10% instead.

 59, 72.530, 5.427  59, 72.530, 5.427

 100, 72.530, 5.427  49, 72.530, 5.427

 79, 72.530, 5.427  39, 72.530, 5.427

 89, 72.530, 5.427  29, 72.530, 5.427

 99, 72.530, 5.427  19, 72.530, 5.427

 9, 72.530, 5.427

 0, 72.530, 5.427

 59, 72.530, 5.427  59, 72.530, 5.427

 56, 78.860, 9.249  63, 64.410, 2.424

 54, 83.362, 14.020  68, 54.917, 0.052

■ 54, 86.038, 18.243

■ 73, 44.567,
358.147

■ 79, 33.830,
356.583

■ 85, 23.063,
355.267

■ 91, 12.497,
354.126

■ 98, 2.267, 352.950

■ 100, 0.623,
200.430

Harmonies

Complementary

The Complementary color scheme is a pair of colors which are on the opposite of each other on the color wheel.



59, 72.530, 5.427



90, 62.022, 163.876

Rectangle

The Rectangle color scheme consists of four colors that form a rectangle on the color wheel.



59, 72.530, 5.427



59, 72.530, 55.427



59, 72.530, 185.427



59, 72.530, 235.427

Sweetspot

The Sweet Spot groups the original color and five complimentary colors.



59, 72.526, 5.429



86, 22.912, 355.236



54, 102.029, 316.756



44, 15.454, 355.572



0, 0.000, 0.000



53, 0.007, 296.813

Same Dimension

The Same Dimension uses a secret algorithm to generate beautiful new colors.



59, 72.526, 5.429



56, 81.654, 11.403



62, 73.967, 38.624



50, 5.798, 353.831



40, 69.377, 17.194



10, 31.321, 9.476

Inverse Universe

The Inverse Universe completely reimagines the original color for something new.



59, 72.526, 5.429



56, 81.654, 11.403



83, 40.040, 218.599



50, 5.798, 353.831



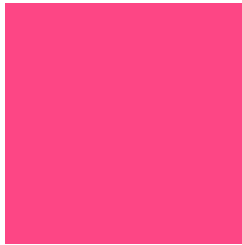
40, 69.377, 17.194



10, 31.321, 9.476

Previews

White Background



This preview shows how the CIELCh color 59, 72.530, 5.427 looks on a white background.

Color Contrast Check

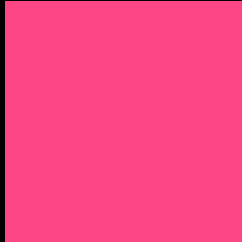
Large Text (above 18pt) WCAG AA ✓ Pass

Any Text WCAG AA ✗ Fail

Large Text (above 18pt) WCAG AAA ✗ Fail

Any Text WCAG AAA ✗ Fail

Black Background



This preview shows how the CIELCh color 59, 72.530, 5.427 looks on a black background.

Color Contrast Check

Large Text (above 18pt) WCAG AA ✓ Pass

Any Text WCAG AA ✓ Pass

Large Text (above 18pt) WCAG AAA ✓ Pass

Any Text WCAG AAA × Fail

If you want to check with other color combinations, try the [Color Contrast Checker](#).

CIELCh 59, 72.530, 5.427

Background



This preview shows how black text looks on a background with the CIELCh color 59, 72.530, 5.427.

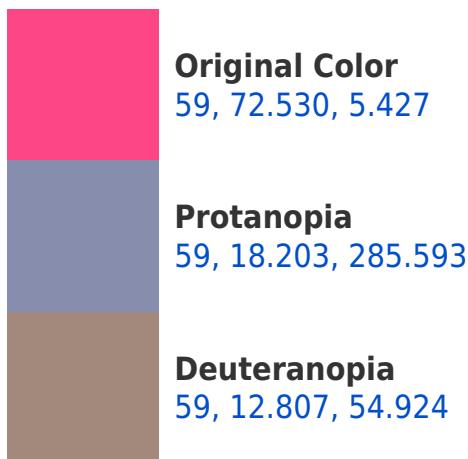


This preview shows how white text looks on a background with the CIELCh color 59, 72.530, 5.427.

Color Blindness Simulation

Color vision deficiency is a very complex topic, and I could not describe the different causes any better than Wikipedia does, so if you want to learn more, you should check out their [article about color blindness](#).

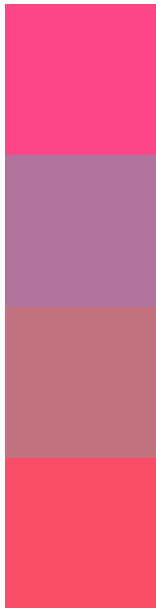
Dichromacy





Tritanopia
59, 72.713, 27.941

Trichromacy



Original Color
59, 72.530, 5.427

Protanomaly
56, 34.271, 336.931

Deuteranomaly
57, 34.569, 10.760

Tritanomaly
59, 71.253, 19.856

Monochromacy



Original Color
59, 72.530, 5.427

Achromatopsia
55, 0.007, 296.813

Achromatomaly
54, 29.241, 357.972

CSS Examples

Text

The CSS property to change the color of the text to CIELCh 59, 72.530, 5.427 is called "color". The color property can be set on classes, ids or directly on the HTML element.

This example shows how text in the color `rgb(253, 70, 133)` looks like.

```
.text, #text, p{  
    color:rgb(253, 70, 133)  
}
```

If you want to add a text shadow in that color use the text-shadow property, you can generate a text shadow directly with our [CSS Text Shadow Generator](#).

Here you see how black text with a 4 pixel rgb(253, 70, 133) colored shadow looks like.

```
.shadow{ text-shadow: 4px 4px 2px rgb(253, 70, 133) }
```

Border

The CSS property to change the border of an element to CIELCh 59, 72.530, 5.427 is called "border". The border property can be set on classes, ids or directly on the HTML element.

This example shows the color as border, it can be applied via the CSS property "border" or "border-color".

```
.border, #border, table{ border:4px solid rgb(253, 70, 133) }
```

If only the border color should be changed use the property border-color.

```
.border{ border-color:rgb(253, 70, 133) }
```

If you want to add a box shadow in that color use:

Here you see how a box with a 4 pixel rgb(253, 70, 133) colored shadow looks like.

```
.boxshadow{ -moz-box-shadow:4px 4px 4px  
4px rgb(253, 70, 133); -webkit-box-  
shadow:4px 4px 4px 4px rgb(253, 70, 133);  
box-shadow:4px 4px 4px 4px rgb(253, 70,  
133) }
```

Background

The CSS property to change the background color of an element to CIELCh 59, 72.530, 5.427 is called "background". The background property can be set on classes, ids or directly on the HTML element.

```
.background, #background, body{  
background: rgb(253, 70, 133) }
```

If only the background color should be changed can be used:

```
.background{ background-color: rgb(253, 70,  
133) }
```

This example shows the color as background, it is applied via the CSS property "background".

To optimize and compress your CSS code, you can use our [online CSS compressor and optimizer](#) based on csstidy. If you want to create a linear or radial gradient as background or border, check our [CSS Gradient Generator](#).

Hey! You found this booklet interesting? Support Converting Colors with the new Membership Option!

The pro membership hides all ads, plus gives you double the colors in the color bucket, and more awesome pro features!

[Learn more, Memberships starting at \\$2.50/m!](#)

**Follow me
on Twitter!**

@ConvertingColor