

Converting Colors

CIELCh(59, 73.131, 14.337)

Have a look what the booklet for
CIELCh(59, 73.131, 14.337) contains.

CIELCh(59, 73.251, 14.318)	3
<i>Conversions</i>	4
<i>Details</i>	6
<i>Harmonies</i>	11
<i>Previews</i>	20
<i>Color Blindness Simulation</i>	23
<i>CSS Examples</i>	26

Color

CIELCh(59, 73.251, 14.318)

Conversions

Conversions Part 1

Format	Color
Hex	FF4772
RGB	255, 71, 114
RGB Percent	100%, 28%, 45%
CMY	0.0000, 0.7210, 0.5525
CMYK	0.00, 0.72, 0.55, 0.00
HSL	346°, 100%, 64%
HSV	346°, 72%, 100%
XYZ	46.5960, 27.0277, 18.7123
YIQ	130.9180, 95.8610, 52.3810

Conversions

Conversions Part 2

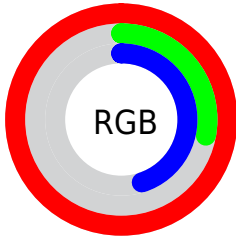
Format	Color
R _Y B	255, 71, 114
Decimal	16729970
CIE Lab	59.00, 70.98, 18.12
CIE LCh	59, 73.251, 14.318
Yxy	27.0277, 0.5046, 0.2927
Android (android.graphics.Color)	4294920050 (0xFFFF4772)
YUV	130.9180, -8.3406, 108.8199
Hunter-Lab	51.9882, 69.0066, 15.0513

Details

The CIELCh color **59, 73.251, 14.318** is a dark color, and the websafe version is hex **FF3366**. The color can be described as middle washed rose. A complement of this color would be **91, 55.688, 172.313**, and the grayscale version is **55, 0.007, 296.813**.

A 20% lighter version of the original color is **70, 50.252, 4.172**, and **41, 69.462, 16.737** is the 20% darker color. If you saturate the color by 10%, you get **56, 80.977, 18.545**, and if you desaturate by 10%, it is **63, 64.095, 10.917**.

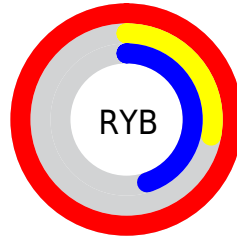
Distribution



Red (100%)

Green (28%)

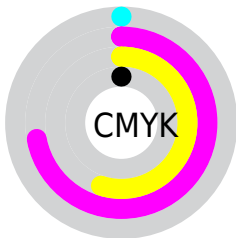
Blue (45%)



Red (100%)

Yellow (28%)

Blue (45%)

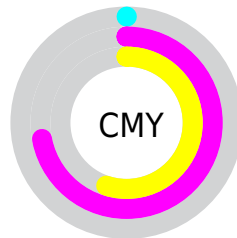


Cyan (0%)

Magenta (72%)

Yellow (55%)

Black (0%)



Cyan (0%)

Magenta (72%)

Yellow (55%)


Brightness & Saturation Gradients

These gradients show how the CIELCh color 59, 73.251, 14.318 changes by changing the brightness by 10 percent. The first figure shows a shift by +10% for each color and the second figure -10%.

Similar to the brightness gradients but the following saturation gradients show a change of the CIELCh color 59, 73.251, 14.318 by changing the saturation by 10% instead.

 59, 73.251, 14.318

 59, 73.251, 14.318

 100, 73.251,
14.318

 49, 73.251, 14.318

 79, 73.251, 14.318

 39, 73.251, 14.318

 89, 73.251, 14.318

 29, 73.251, 14.318

 99, 73.251, 14.318

 19, 73.251, 14.318

 9, 73.251, 14.318

 0, 73.251, 14.318

 59, 73.251, 14.318

 59, 73.251, 14.318

 56, 80.977, 18.545

 63, 64.095, 10.917

 54, 87.391, 23.662

 68, 53.998, 8.254

■ 54, 91.832, 28.035

■ 73, 43.363, 6.143

■ 79, 32.599, 4.443

■ 85, 22.007, 3.044

■ 92, 11.773, 1.856

■ 99, 1.994, 0.613

100, 0.012,
296.813

Harmonies

Complementary

The Complementary color scheme is a pair of colors which are on the opposite of each other on the color wheel.



59, 73.251, 14.318



91, 55.688, 172.313

Rectangle

The Rectangle color scheme consists of four colors that form a rectangle on the color wheel.



59, 73.251, 14.318



59, 73.251, 64.318



59, 73.251, 194.318



59, 73.251, 244.318

Sweetspot

The Sweet Spot groups the original color and five complimentary colors.



59, 73.201, 14.300



85, 21.906, 3.031



57, 102.189, 319.799



44, 14.804, 3.386



0, 0.000, 0.000



53, 0.007, 296.813

Same Dimension

The Same Dimension uses a secret algorithm to generate beautiful new colors.



59, 73.201, 14.300



55, 84.279, 20.955



65, 70.336, 45.052



50, 5.499, 1.570



40, 73.349, 26.971



10, 31.790, 16.941

Inverse Universe

The Inverse Universe completely reimagines the original color for something new.



59, 73.201, 14.300



55, 84.279, 20.955



79, 39.997, 235.944



50, 5.499, 1.570



40, 73.349, 26.971



10, 31.790, 16.941

Previews

White Background



This preview shows how the CIELCh color 59, 73.251, 14.318 looks on a white background.

Color Contrast Check

Large Text (above 18pt) WCAG AA ✓ Pass

Any Text WCAG AA ✗ Fail

Large Text (above 18pt) WCAG AAA ✗ Fail

Any Text WCAG AAA ✗ Fail

Black Background



This preview shows how the CIELCh color 59, 73.251, 14.318 looks on a black background.

Color Contrast Check

Large Text (above 18pt) WCAG AA ✓ Pass

Any Text WCAG AA ✓ Pass

Large Text (above 18pt) WCAG AAA ✓ Pass

Any Text WCAG AAA × Fail

If you want to check with other color combinations, try the [Color Contrast Checker](#).

CIELCh 59, 73.251, 14.318

Background



This preview shows how black text looks on a background with the CIELCh color 59, 73.251, 14.318.



This preview shows how white text looks on a background with the CIELCh color 59, 73.251, 14.318.

Color Blindness Simulation

Color vision deficiency is a very complex topic, and I could not describe the different causes any better than Wikipedia does, so if you want to learn more, you should check out their [article about color blindness](#).

Dichromacy



Original Color

59, 73.251, 14.318

Protanopia

59, 4.614, 300.234

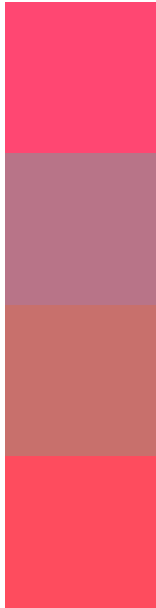
Deuteranopia

59, 22.612, 70.004



Tritanopia
59, 75.486, 28.936

Trichromacy



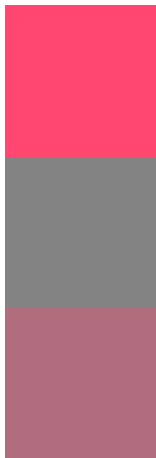
Original Color
59, 73.251, 14.318

Protanomaly
57, 29.462, 0.681

Deuteranomaly
57, 38.474, 27.197

Tritanomaly
59, 73.994, 23.772

Monochromacy



Original Color
59, 73.251, 14.318

Achromatopsia
55, 0.007, 296.813

Achromatomaly
54, 28.870, 4.883

CSS Examples

Text

The CSS property to change the color of the text to CIELCh 59, 73.251, 14.318 is called "color". The color property can be set on classes, ids or directly on the HTML element.

This example shows how text in the color `rgb(255, 71, 114)` looks like.

```
.text, #text, p{  
    color:rgb(255, 71, 114)  
}
```

If you want to add a text shadow in that color use the text-shadow property, you can generate a text shadow directly with our [CSS Text Shadow Generator](#).

Here you see how black text with a 4 pixel rgb(255, 71, 114) colored shadow looks like.

```
.shadow{ text-shadow: 4px 4px 2px rgb(255, 71, 114) }
```

Border

The CSS property to change the border of an element to CIELCh 59, 73.251, 14.318 is called "border". The border property can be set on classes, ids or directly on the HTML element.

This example shows the color as border, it can be applied via the CSS property "border" or "border-color".

```
.border, #border, table{ border:4px solid rgb(255, 71, 114) }
```

If only the border color should be changed use the property `border-color`.

```
.border{ border-color:rgb(255, 71, 114) }
```

If you want to add a box shadow in that color use:

Here you see how a box with a 4 pixel `rgb(255, 71, 114)` colored shadow looks like.

```
.boxshadow{ -moz-box-shadow:4px 4px 4px  
4px rgb(255, 71, 114); -webkit-box-  
shadow:4px 4px 4px 4px rgb(255, 71, 114);  
box-shadow:4px 4px 4px 4px rgb(255, 71,  
114) }
```

Background

The CSS property to change the background color of an element to CIELCh 59, 73.251, 14.318 is called "background". The background property can be set on classes, ids or directly on the HTML element.

```
.background, #background, body{  
background: rgb(255, 71, 114) }
```

If only the background color should be changed can be used:

```
.background{ background-color: rgb(255, 71,  
114) }
```

This example shows the color as background, it is applied via the CSS property "background".

To optimize and compress your CSS code, you can use our [online CSS compressor and optimizer](#) based on csstidy. If you want to create a linear or radial gradient as background or border, check our [CSS Gradient Generator](#).

Hey! You found this booklet interesting? Support Converting Colors with the new Membership Option!

The pro membership hides all ads, plus gives you double the colors in the color bucket, and more awesome pro features!

[Learn more, Memberships starting at \\$2.50/m!](#)

**Follow me
on Twitter!**

@ConvertingColor