

Converting Colors

CIELCh(59, 73.147, 13.829)

Have a look what the booklet for
CIELCh(59, 73.147, 13.829) contains.

CIELCh(59, 73.183, 13.881)	3
<i>Conversions</i>	4
<i>Details</i>	6
<i>Harmonies</i>	11
<i>Previews</i>	20
<i>Color Blindness Simulation</i>	23
<i>CSS Examples</i>	26

Color

CIELCh(59, 73.183, 13.881)

Conversions

Conversions Part 1

Format	Color
Hex	FF4773
RGB	255, 71, 115
RGB Percent	100%, 28%, 45%
CMY	0.0000, 0.7212, 0.5488
CMYK	0.00, 0.72, 0.55, 0.00
HSL	346°, 100%, 64%
HSV	346°, 72%, 100%
XYZ	46.6209, 27.0277, 18.9955
YIQ	131.0320, 95.5400, 52.6920

Conversions

Conversions Part 2

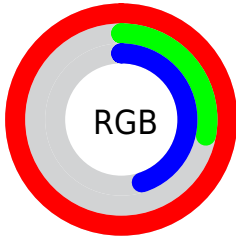
Format	Color
RYB	255, 71, 115
Decimal	16729971
CIELab	59.00, 71.05, 17.56
CIElCh	59, 73.183, 13.881
Yxy	27.0277, 0.5032, 0.2917
Android (android.graphics.Color)	4294920051 (0xFFFF4773)
YUV	131.0320, -7.9038, 108.7199
Hunter-Lab	51.9882, 69.0919, 14.7283

Details

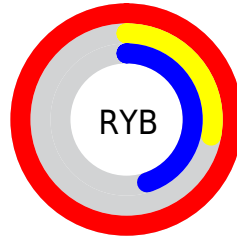
The CIELCh color **59, 73.183, 13.881** is a dark color, and the websafe version is hex **FF3366**. The color can be described as middle washed rose. A complement of this color would be **91, 56.004, 171.851**, and the grayscale version is **55, 0.007, 296.813**.

A 20% lighter version of the original color is **70, 50.333, 3.568**, and **41, 69.462, 16.737** is the 20% darker color. If you saturate the color by 10%, you get **56, 80.851, 18.108**, and if you desaturate by 10%, it is **63, 64.108, 10.501**.

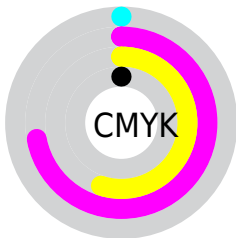
Distribution



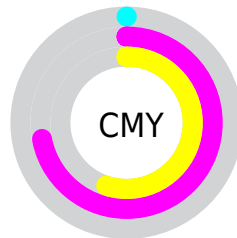
- Red (100%)
- Green (28%)
- Blue (45%)



- Red (100%)
- Yellow (28%)
- Blue (45%)



- Cyan (0%)
- Magenta (72%)
- Yellow (55%)
- Black (0%)



- Cyan (0%)
- Magenta (72%)
- Yellow (55%)


Brightness & Saturation Gradients

These gradients show how the CIELCh color 59, 73.183, 13.881 changes by changing the brightness by 10 percent. The first figure shows a shift by +10% for each color and the second figure -10%.

Similar to the brightness gradients but the following saturation gradients show a change of the CIELCh color 59, 73.183, 13.881 by changing the saturation by 10% instead.

 59, 73.183, 13.881

 59, 73.183, 13.881

 100, 73.183,
13.881

 49, 73.183, 13.881

 79, 73.183, 13.881

 39, 73.183, 13.881

 89, 73.183, 13.881

 29, 73.183, 13.881

 99, 73.183, 13.881

 19, 73.183, 13.881

 9, 73.183, 13.881

 0, 73.183, 13.881

 59, 73.183, 13.881

 59, 73.183, 13.881

 56, 80.851, 18.108

 63, 64.108, 10.501

 54, 87.164, 23.224

 68, 54.048, 7.846

■ 54, 91.511, 27.596

■ 73, 43.432, 5.742

■ 79, 32.674, 4.045

■ 85, 22.075, 2.647

■ 92, 11.825, 1.459

■ 99, 2.025, 0.220

100, 0.012,
296.813

Harmonies

Complementary

The Complementary color scheme is a pair of colors which are on the opposite of each other on the color wheel.



59, 73.183, 13.881



91, 56.004, 171.851

Rectangle

The Rectangle color scheme consists of four colors that form a rectangle on the color wheel.



59, 73.183, 13.881



59, 73.183, 63.881



59, 73.183, 193.881



59, 73.183, 243.881

Sweetspot

The Sweet Spot groups the original color and five complimentary colors.



59, 73.156, 13.873



85, 21.945, 2.631



57, 102.217, 319.799



44, 14.829, 2.985



0, 0.000, 0.000



53, 0.007, 296.813

Same Dimension

The Same Dimension uses a secret algorithm to generate beautiful new colors.



59, 73.156, 13.873



55, 84.088, 20.502



65, 70.368, 45.054



50, 5.511, 1.169



40, 73.104, 26.528



10, 31.759, 16.631

Inverse Universe

The Inverse Universe completely reimagines the original color for something new.



59, 73.156, 13.873



55, 84.088, 20.502



79, 40.005, 235.953



50, 5.511, 1.169



40, 73.104, 26.528



10, 31.759, 16.631

Previews

White Background



This preview shows how the CIELCh color 59, 73.183, 13.881 looks on a white background.

Color Contrast Check

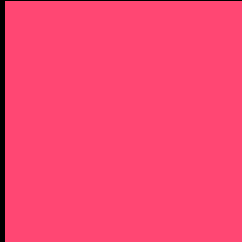
Large Text (above 18pt) WCAG AA ✓ Pass

Any Text WCAG AA ✗ Fail

Large Text (above 18pt) WCAG AAA ✗ Fail

Any Text WCAG AAA ✗ Fail

Black Background



This preview shows how the CIELCh color 59, 73.183, 13.881 looks on a black background.

Color Contrast Check

Large Text (above 18pt) WCAG AA ✓ Pass

Any Text WCAG AA ✓ Pass

Large Text (above 18pt) WCAG AAA ✓ Pass

Any Text WCAG AAA × Fail

If you want to check with other color combinations, try the [Color Contrast Checker](#).

CIELCh 59, 73.183, 13.881

Background



This preview shows how black text looks on a background with the CIELCh color 59, 73.183, 13.881.



This preview shows how white text looks on a background with the CIELCh color 59, 73.183, 13.881.

Color Blindness Simulation

Color vision deficiency is a very complex topic, and I could not describe the different causes any better than Wikipedia does, so if you want to learn more, you should check out their [article about color blindness](#).

Dichromacy



Original Color

59, 73.183, 13.881

Protanopia

59, 5.127, 295.024

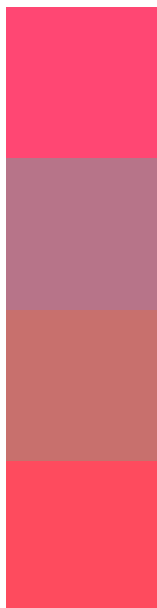
Deuteranopia

59, 22.153, 69.227



Tritanopia
59, 75.486, 28.936

Trichromacy



Original Color
59, 73.183, 13.881

Protanomaly
56, 29.238, 359.249

Deuteranomaly
57, 38.318, 26.397

Tritanomaly
59, 74.250, 23.549

Monochromacy



Original Color
59, 73.183, 13.881

Achromatopsia
55, 0.007, 296.813

Achromatomaly
54, 28.870, 4.883

CSS Examples

Text

The CSS property to change the color of the text to CIELCh 59, 73.183, 13.881 is called "color". The color property can be set on classes, ids or directly on the HTML element.

This example shows how text in the color `rgb(255, 71, 115)` looks like.

```
.text, #text, p{  
    color:rgb(255, 71, 115)  
}
```

If you want to add a text shadow in that color use the text-shadow property, you can generate a text shadow directly with our [CSS Text Shadow Generator](#).

Here you see how black text with a 4 pixel rgb(255, 71, 115) colored shadow looks like.

```
.shadow{ text-shadow: 4px 4px 2px rgb(255, 71, 115) }
```

Border

The CSS property to change the border of an element to CIELCh 59, 73.183, 13.881 is called "border". The border property can be set on classes, ids or directly on the HTML element.

This example shows the color as border, it can be applied via the CSS property "border" or "border-color".

```
.border, #border, table{ border:4px solid rgb(255, 71, 115) }
```

If only the border color should be changed use the property border-color.

```
.border{ border-color:rgb(255, 71, 115) }
```

If you want to add a box shadow in that color use:

Here you see how a box with a 4 pixel rgb(255, 71, 115) colored shadow looks like.

```
.boxshadow{ -moz-box-shadow:4px 4px 4px  
4px rgb(255, 71, 115); -webkit-box-  
shadow:4px 4px 4px 4px rgb(255, 71, 115);  
box-shadow:4px 4px 4px 4px rgb(255, 71,  
115) }
```

Background

The CSS property to change the background color of an element to CIELCh 59, 73.183, 13.881 is called "background". The background property can be set on classes, ids or directly on the HTML element.

```
.background, #background, body{  
background: rgb(255, 71, 115) }
```

If only the background color should be changed can be used:

```
.background{ background-color: rgb(255, 71,  
115) }
```

This example shows the color as background, it is applied via the CSS property "background".

To optimize and compress your CSS code, you can use our [online CSS compressor and optimizer](#) based on csstidy. If you want to create a linear or radial gradient as background or border, check our [CSS Gradient Generator](#).

Hey! You found this booklet interesting? Support Converting Colors with the new Membership Option!

The pro membership hides all ads, plus gives you double the colors in the color bucket, and more awesome pro features!

[Learn more, Memberships starting at \\$2.50/m!](#)

**Follow me
on Twitter!**

@ConvertingColor