

Converting Colors

CIELCh(60, 10.727, 53.688)

Have a look what the booklet for
CIELCh(60, 10.727, 53.688) contains.

CIELCh(60, 10.675, 51.754)	3
<i>Conversions</i>	4
<i>Details</i>	6
<i>Harmonies</i>	11
<i>Previews</i>	20
<i>Color Blindness Simulation</i>	23
<i>CSS Examples</i>	26

Color

CIELCh(60, 10.675, 51.754)

Conversions

Conversions Part 1

Format	Color
Hex	A28C82
RGB	162, 140, 130
RGB Percent	64%, 55%, 51%
CMY	0.3640, 0.4503, 0.4895
CMYK	0.00, 0.14, 0.20, 0.36
HSL	19°, 15%, 57%
HSV	19°, 20%, 64%
XYZ	28.3809, 28.1233, 25.1120
YIQ	145.4380, 16.3220, 1.5540

Conversions

Conversions Part 2

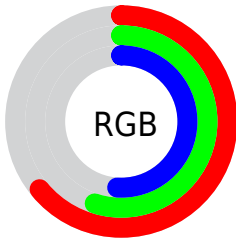
Format	Color
R _Y B	162, 145, 130
Decimal	10652802
CIE Lab	60.00, 6.61, 8.38
CIE LCh	60, 10.675, 51.754
Yxy	28.1233, 0.3477, 0.3446
Android (android.graphics.Color)	4288842882 (0xFFA28C82)
YUV	145.4380, -7.6109, 14.5249
Hunter-Lab	53.0314, 2.7230, 9.0464

Details

The CIELCh color $60, 10.675, 51.754$ is a dark color, and the websafe version is hex 999999 . A complement of this color would be $62, 9.582, 234.925$, and the grayscale version is $60, 0.008, 296.813$.

A 20% lighter version of the original color is $80, 10.580, 53.277$, and $40, 10.601, 51.184$ is the 20% darker color. If you saturate the color by 10%, you get $57, 16.696, 51.201$, and if you desaturate by 10%, it is $63, 5.076, 52.366$.

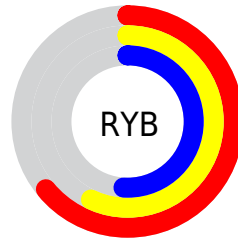
Distribution



Red (64%)

Green (55%)

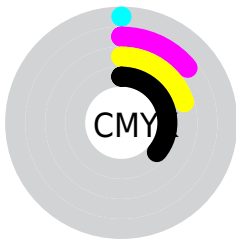
Blue (51%)



Red (64%)

Yellow (57%)

Blue (51%)

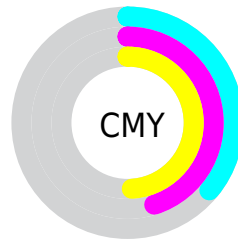


Cyan (0%)

Magenta (14%)

Yellow (20%)

Black (36%)



Cyan (36%)

Magenta (45%)

Yellow (49%)

Brightness & Saturation Gradients

These gradients show how the CIELCh color 60, 10.675, 51.754 changes by changing the brightness by 10 percent. The first figure shows a shift by +10% for each color and the second figure -10%.

Similar to the brightness gradients but the following saturation gradients show a change of the CIELCh color 60, 10.675, 51.754 by changing the saturation by 10% instead.

■ 60, 10.675, 51.754

■ 60, 10.675, 51.754

■ 100, 10.675,
51.754

■ 50, 10.675, 51.754

■ 80, 10.675, 51.754

■ 40, 10.675, 51.754

■ 90, 10.675, 51.754

■ 30, 10.675, 51.754

■ 20, 10.675, 51.754

■ 10, 10.675, 51.754

■ 0, 10.675, 51.754

■ 60, 10.675, 51.754

■ 60, 10.675, 51.754

■ 57, 16.696, 51.201

■ 63, 5.076, 52.366

■ 53, 23.170, 50.714

■ 67, 0.137, 236.256

50, 30.106, 50.325

70, 5.005, 233.948

47, 37.477, 50.042

74, 9.566, 234.645

45, 45.177, 49.839

77, 13.858,
235.375

42, 52.945, 49.618

81, 17.913,
236.109

40, 60.196, 49.119

38, 66.517, 48.384

84, 21.761,
236.836

38, 66.698, 48.386

88, 24.206,
232.150

91, 25.108,
215.533

Harmonies

Complementary

The Complementary color scheme is a pair of colors which are on the opposite of each other on the color wheel.



60, 10.675, 51.754



62, 9.582, 234.925

Rectangle

The Rectangle color scheme consists of four colors that form a rectangle on the color wheel.



60, 10.675, 51.754



60, 10.675, 101.754



60, 10.675, 231.754



60, 10.675, 281.754

Sweetspot

The Sweet Spot groups the original color and five complimentary colors.



60, 10.675, 51.766



82, 3.834, 52.560



58, 17.742, 335.630



44, 2.569, 52.531



93, 0.011, 296.813



45, 0.006, 296.813

Same Dimension

The Same Dimension uses a secret algorithm to generate beautiful new colors.



60, 10.675, 51.766



75, 16.409, 51.491



64, 14.416, 98.169



33, 2.960, 52.393



34, 61.305, 48.680



2, 4.490, 49.469

Inverse Universe

The Inverse Universe completely reimagines the original color for something new.



62, 9.582, 234.925



77, 14.309, 235.470



57, 14.726, 282.916



33, 2.823, 233.940



40, 32.561, 257.360



3, 4.497, 240.230

Previews

White Background



This preview shows how the CIELCh color 60, 10.675, 51.754 looks on a white background.

Color Contrast Check

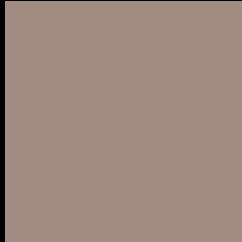
Large Text (above 18pt) WCAG AA ✓ Pass

Any Text WCAG AA × Fail

Large Text (above 18pt) WCAG AAA × Fail

Any Text WCAG AAA × Fail

Black Background



This preview shows how the CIE LCh color 60, 10.675, 51.754 looks on a black background.

Color Contrast Check

Large Text (above 18pt) WCAG AA ✓ Pass

Any Text WCAG AA ✓ Pass

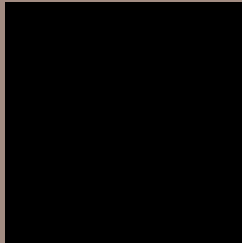
Large Text (above 18pt) WCAG AAA ✓ Pass

Any Text WCAG AAA × Fail

If you want to check with other color combinations, try the [Color Contrast Checker](#).

CIELCh 60, 10.675, 51.754

Background



This preview shows how black text looks on a background with the CIELCh color 60, 10.675, 51.754.



This preview shows how white text looks on a background with the CIELCh color 60, 10.675, 51.754.

Color Blindness Simulation

Color vision deficiency is a very complex topic, and I could not describe the different causes any better than Wikipedia does, so if you want to learn more, you should check out their [article about color blindness](#).

Dichromacy



Original Color

60, 10.675, 51.754

Protanopia

60, 7.160, 89.643

Deuteranopia

60, 11.501, 46.245



Tritanopia
60, 12.283, 350.451

Trichromacy



Original Color
60, 10.675, 51.754

Protanomaly
60, 8.093, 75.885

Deuteranomaly
60, 11.124, 47.169

Tritanomaly
60, 10.210, 7.739

Monochromacy



Original Color
60, 10.675, 51.754

Achromatopsia
61, 0.008, 296.813

Achromatomaly
60, 3.873, 54.988

CSS Examples

Text

The CSS property to change the color of the text to CIELCh 60, 10.675, 51.754 is called "color". The color property can be set on classes, ids or directly on the HTML element.

This example shows how text in the color `rgb(162, 140, 130)` looks like.

```
.text, #text, p{  
    color:rgb(162, 140, 130)  
}
```

If you want to add a text shadow in that color use the text-shadow property, you can generate a text shadow directly with our [CSS Text Shadow Generator](#).

Here you see how black text with a 4 pixel rgb(162, 140, 130) colored shadow looks like.

```
.shadow{ text-shadow: 4px 4px 2px rgb(162, 140, 130) }
```

Border

The CSS property to change the border of an element to CIELCh 60, 10.675, 51.754 is called "border". The border property can be set on classes, ids or directly on the HTML element.

This example shows the color as border, it can be applied via the CSS property "border" or "border-color".

```
.border, #border, table{ border:4px solid rgb(162, 140, 130) }
```

If only the border color should be changed use the property `border-color`.

```
.border{ border-color:rgb(162, 140, 130) }
```

If you want to add a box shadow in that color use:

Here you see how a box with a 4 pixel `rgb(162, 140, 130)` colored shadow looks like.

```
.boxshadow{ -moz-box-shadow:4px 4px 4px  
4px rgb(162, 140, 130); -webkit-box-  
shadow:4px 4px 4px 4px rgb(162, 140, 130);  
box-shadow:4px 4px 4px 4px rgb(162, 140,  
130) }
```

Background

The CSS property to change the background color of an element to CIELCh 60, 10.675, 51.754 is called "background". The background property can be set on classes, ids or directly on the HTML element.

```
.background, #background, body{  
background: rgb(162, 140, 130) }
```

If only the background color should be changed can be used:

```
.background{ background-color: rgb(162,  
140, 130) }
```

This example shows the color as background, it is applied via the CSS property "background".

To optimize and compress your CSS code, you can use our [online CSS compressor and optimizer](#) based on csstidy. If you want to create a linear or radial gradient as background or border, check our [CSS Gradient Generator](#).

Hey! You found this booklet interesting? Support Converting Colors with the new Membership Option!

The pro membership hides all ads, plus gives you double the colors in the color bucket, and more awesome pro features!

[Learn more, Memberships starting at \\$2.50/m!](#)

**Follow me
on Twitter!**

@ConvertingColor