

Converting Colors

CIELCh(60, 11.382, 20.538)

Have a look what the booklet for
CIELCh(60, 11.382, 20.538) contains.

CIELCh(60, 11.303, 20.520)	3
<i>Conversions</i>	4
<i>Details</i>	6
<i>Harmonies</i>	11
<i>Previews</i>	20
<i>Color Blindness Simulation</i>	23
<i>CSS Examples</i>	26

Color

CIELCh(60, 11.303, 20.520)

Conversions

Conversions Part 1

Format	Color
Hex	A68A8A
RGB	166, 138, 138
RGB Percent	65%, 54%, 54%
CMY	0.3490, 0.4588, 0.4588
CMYK	0.00, 0.17, 0.17, 0.35
HSL	0°, 14%, 60%
HSV	0°, 17%, 65%
XYZ	29.4064, 28.1233, 27.9270
YIQ	146.3720, 16.6880, 5.9360

Conversions

Conversions Part 2

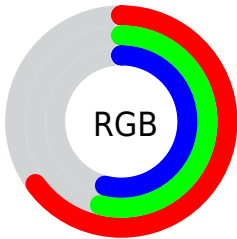
Format	Color
RYB	166, 138, 138
Decimal	10914442
CIELab	60.00, 10.59, 3.96
CIElCh	60, 11.303, 20.520
Yxy	28.1233, 0.3441, 0.3291
Android (android.graphics.Color)	4289104522 (0xFFA68A8A)
YUV	146.3720, -4.1274, 17.2138
Hunter-Lab	53.0314, 6.1747, 5.8992

Details

The CIELCh color `60, 11.303, 20.520` is a dark color, and the websafe version is hex `999999`. A complement of this color would be `66, 10.151, 198.582`, and the grayscale version is `61, 0.008, 296.813`.

A 20% lighter version of the original color is `80, 11.347, 20.266`, and `40, 11.460, 20.991` is the 20% darker color. If you saturate the color by 10%, you get `55, 18.700, 21.499`, and if you desaturate by 10%, it is `65, 4.426, 19.724`.

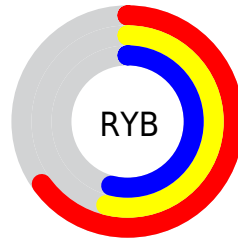
Distribution



Red (65%)

Green (54%)

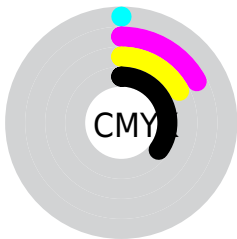
Blue (54%)



Red (65%)

Yellow (54%)

Blue (54%)

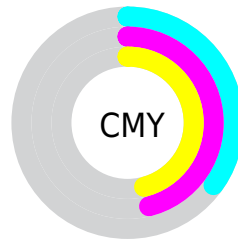


Cyan (0%)

Magenta (17%)

Yellow (17%)

Black (35%)



Cyan (35%)

Magenta (46%)

Yellow (46%)

Brightness & Saturation Gradients

These gradients show how the CIELCh color 60, 11.303, 20.520 changes by changing the brightness by 10 percent. The first figure shows a shift by +10% for each color and the second figure -10%.

Similar to the brightness gradients but the following saturation gradients show a change of the CIELCh color 60, 11.303, 20.520 by changing the saturation by 10% instead.

60, 11.303, 20.520

60, 11.303, 20.520

100, 11.303,
20.520

50, 11.303, 20.520

80, 11.303, 20.520

40, 11.303, 20.520

90, 11.303, 20.520

30, 11.303, 20.520

20, 11.303, 20.520

10, 11.303, 20.520

0, 11.303, 20.520

60, 11.303, 20.520

60, 11.303, 20.520

55, 18.700, 21.499

65, 4.426, 19.724

51, 26.602, 22.747

70, 1.941, 199.502

47, 34.927, 24.369

75, 7.837, 198.860

43, 43.525, 26.471

80, 13.306,
198.471

40, 52.162, 29.143

85, 18.395,
198.167

37, 60.515, 32.381

35, 68.069, 35.902

89, 23.151,
197.922

34, 73.922, 38.954

94, 27.614,
197.722

34, 75.645, 39.829

95, 27.821,
197.703

Harmonies

Complementary

The Complementary color scheme is a pair of colors which are on the opposite of each other on the color wheel.



60, 11.303, 20.520



66, 10.151, 198.582

Rectangle

The Rectangle color scheme consists of four colors that form a rectangle on the color wheel.



60, 11.303, 20.520



60, 11.303, 70.520



60, 11.303, 200.520



60, 11.303, 250.520

Sweetspot

The Sweet Spot groups the original color and five complimentary colors.



60, 11.302, 20.529



84, 3.977, 19.572



61, 19.014, 325.338



44, 2.742, 19.632



94, 0.011, 296.813



46, 0.006, 296.813

Same Dimension

The Same Dimension uses a secret algorithm to generate beautiful new colors.



60, 11.302, 20.529



75, 16.875, 20.843



64, 9.629, 73.357



33, 3.723, 19.916



30, 69.025, 39.361



1, 6.571, 19.413

Inverse Universe

The Inverse Universe completely reimagines the original color for something new.



66, 10.151, 198.582



84, 14.795, 198.406



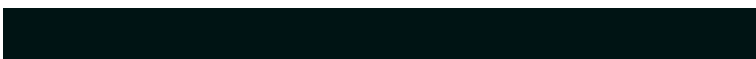
62, 9.227, 257.747



35, 3.515, 199.001



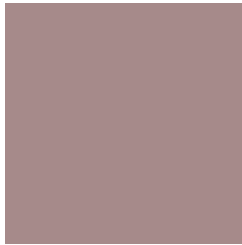
55, 33.382, 196.404



5, 6.571, 199.436

Previews

White Background



This preview shows how the CIELCh color 60, 11.303, 20.520 looks on a white background.

Color Contrast Check

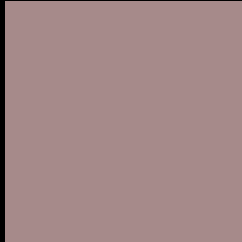
Large Text (above 18pt) WCAG AA ✓ Pass

Any Text WCAG AA ✗ Fail

Large Text (above 18pt) WCAG AAA ✗ Fail

Any Text WCAG AAA ✗ Fail

Black Background



This preview shows how the CIE LCh color 60, 11.303, 20.520 looks on a black background.

Color Contrast Check

Large Text (above 18pt) WCAG AA ✓ Pass

Any Text WCAG AA ✓ Pass

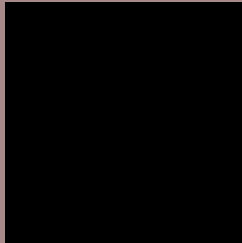
Large Text (above 18pt) WCAG AAA ✓ Pass

Any Text WCAG AAA × Fail

If you want to check with other color combinations, try the [Color Contrast Checker](#).

CIELCh 60, 11.303, 20.520

Background



This preview shows how black text looks on a background with the CIELCh color 60, 11.303, 20.520.



This preview shows how white text looks on a background with the CIELCh color 60, 11.303, 20.520.

Color Blindness Simulation

Color vision deficiency is a very complex topic, and I could not describe the different causes any better than Wikipedia does, so if you want to learn more, you should check out their [article about color blindness](#).

Dichromacy



Original Color

60, 11.303, 20.520

Protanopia

60, 2.294, 66.665

Deuteranopia

60, 8.519, 27.739



Tritanopia
60, 13.099, 355.419

Trichromacy



Original Color
60, 11.303, 20.520

Protanomaly
60, 5.285, 32.083

Deuteranomaly
60, 9.683, 23.643

Tritanomaly
60, 12.552, 2.497

Monochromacy



Original Color
60, 11.303, 20.520

Achromatopsia
61, 0.008, 296.813

Achromatomaly
60, 3.936, 19.684

CSS Examples

Text

The CSS property to change the color of the text to CIELCh 60, 11.303, 20.520 is called "color". The color property can be set on classes, ids or directly on the HTML element.

This example shows how text in the color `rgb(166, 138, 138)` looks like.

```
.text, #text, p{  
    color:rgb(166, 138, 138)  
}
```

If you want to add a text shadow in that color use the text-shadow property, you can generate a text shadow directly with our [CSS Text Shadow Generator](#).

Here you see how black text with a 4 pixel rgb(166, 138, 138) colored shadow looks like.

```
.shadow{ text-shadow: 4px 4px 2px rgb(166, 138, 138) }
```

Border

The CSS property to change the border of an element to CIELCh 60, 11.303, 20.520 is called "border". The border property can be set on classes, ids or directly on the HTML element.

This example shows the color as border, it can be applied via the CSS property "border" or "border-color".

```
.border, #border, table{ border:4px solid rgb(166, 138, 138) }
```

If only the border color should be changed use the property `border-color`.

```
.border{ border-color:rgb(166, 138, 138) }
```

If you want to add a box shadow in that color use:

Here you see how a box with a 4 pixel `rgb(166, 138, 138)` colored shadow looks like.

```
.boxshadow{ -moz-box-shadow:4px 4px 4px  
4px rgb(166, 138, 138); -webkit-box-  
shadow:4px 4px 4px 4px rgb(166, 138, 138);  
box-shadow:4px 4px 4px 4px rgb(166, 138,  
138) }
```

Background

The CSS property to change the background color of an element to CIELCh 60, 11.303, 20.520 is called "background". The background property can be set on classes, ids or directly on the HTML element.

```
.background, #background, body{  
background: rgb(166, 138, 138) }
```

If only the background color should be changed can be used:

```
.background{ background-color: rgb(166,  
138, 138) }
```

This example shows the color as background, it is applied via the CSS property "background".

To optimize and compress your CSS code, you can use our [online CSS compressor and optimizer](#) based on csstidy. If you want to create a linear or radial gradient as background or border, check our [CSS Gradient Generator](#).

Hey! You found this booklet interesting? Support Converting Colors with the new Membership Option!

The pro membership hides all ads, plus gives you double the colors in the color bucket, and more awesome pro features!

[Learn more, Memberships starting at \\$2.50/m!](#)

**Follow me
on Twitter!**

@ConvertingColor