

Converting Colors

CIELCh(60, 12.108, 17.972)

Have a look what the booklet for
CIELCh(60, 12.108, 17.972) contains.

CIELCh(60, 12.126, 17.981)	3
<i>Conversions</i>	4
<i>Details</i>	6
<i>Harmonies</i>	11
<i>Previews</i>	20
<i>Color Blindness Simulation</i>	23
<i>CSS Examples</i>	26

Color

CIELCh(60, 12.126, 17.981)

Conversions

Conversions Part 1

Format	Color
Hex	A7898A
RGB	167, 137, 138
RGB Percent	65%, 54%, 54%
CMY	0.3434, 0.4611, 0.4572
CMYK	0.00, 0.18, 0.17, 0.34
HSL	358°, 15%, 60%
HSV	358°, 18%, 66%
XYZ	29.6544, 28.1233, 28.0715
YIQ	146.0840, 17.5590, 6.6710

Conversions

Conversions Part 2

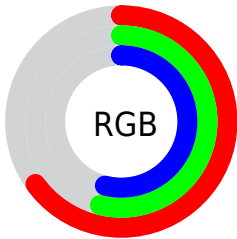
Format	Color
R _Y B	167, 137, 138
Decimal	10979722
CIE Lab	60.00, 11.53, 3.74
CIE LCh	60, 12.126, 17.981
Yxy	28.1233, 0.3454, 0.3276
Android (android.graphics.Color)	4289169802 (0xFFA7898A)
YUV	146.0840, -3.9854, 18.3433
Hunter-Lab	53.0314, 7.0094, 5.7377

Details

The CIELCh color $60, 12.126, 17.981$ is a dark color, and the websafe version is hex `CC9999`. A complement of this color would be $66, 10.888, 195.591$, and the grayscale version is $61, 0.008, 296.813$.

A 20% lighter version of the original color is $80, 12.121, 17.843$, and $40, 12.353, 18.362$ is the 20% darker color. If you saturate the color by 10%, you get $55, 19.572, 19.061$, and if you desaturate by 10%, it is $65, 5.168, 17.099$.

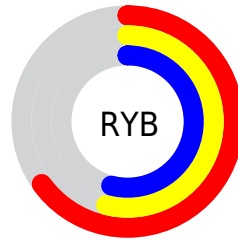
Distribution



Red (65%)

Green (54%)

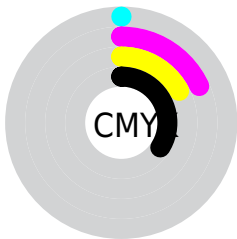
Blue (54%)



Red (65%)

Yellow (54%)

Blue (54%)

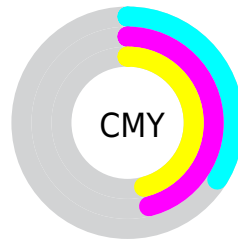


Cyan (0%)

Magenta (18%)

Yellow (17%)

Black (34%)



Cyan (34%)

Magenta (46%)

Yellow (46%)

Brightness & Saturation Gradients

These gradients show how the CIELCh color 60, 12.126, 17.981 changes by changing the brightness by 10 percent. The first figure shows a shift by +10% for each color and the second figure -10%.

Similar to the brightness gradients but the following saturation gradients show a change of the CIELCh color 60, 12.126, 17.981 by changing the saturation by 10% instead.

60, 12.126, 17.981

60, 12.126, 17.981

100, 12.126,
17.981

50, 12.126, 17.981

80, 12.126, 17.981

40, 12.126, 17.981

90, 12.126, 17.981

30, 12.126, 17.981

20, 12.126, 17.981

10, 12.126, 17.981

0, 12.126, 17.981

60, 12.126, 17.981

60, 12.126, 17.981

55, 19.572, 19.061

65, 5.168, 17.099

51, 27.474, 20.418

70, 1.302, 196.890

47, 35.735, 22.159

75, 7.313, 196.042

43, 44.185, 24.397

80, 12.905,
195.565

40, 52.582, 27.232

85, 18.122,
195.180

37, 60.626, 30.684

36, 67.906, 34.525

90, 23.005,
194.858

35, 73.687, 37.920

95, 27.596,
194.585

35, 74.784, 38.493

95, 27.441,
197.726

Harmonies

Complementary

The Complementary color scheme is a pair of colors which are on the opposite of each other on the color wheel.



60, 12.126, 17.981



66, 10.888, 195.591

Rectangle

The Rectangle color scheme consists of four colors that form a rectangle on the color wheel.



60, 12.126, 17.981



60, 12.126, 67.981



60, 12.126, 197.981



60, 12.126, 247.981

Sweetspot

The Sweet Spot groups the original color and five complimentary colors.



60, 12.124, 17.989



84, 3.981, 16.841



61, 20.155, 324.467



44, 2.745, 16.906



94, 0.011, 296.813



46, 0.006, 296.813

Same Dimension

The Same Dimension uses a secret algorithm to generate beautiful new colors.



60, 12.124, 17.989



74, 18.657, 18.438



64, 10.149, 69.621



33, 3.724, 17.216



30, 67.844, 38.027



1, 6.581, 17.027

Inverse Universe

The Inverse Universe completely reimagines the original color for something new.



60, 12.124, 17.989



74, 18.657, 18.438



63, 9.601, 254.146



33, 3.724, 17.216



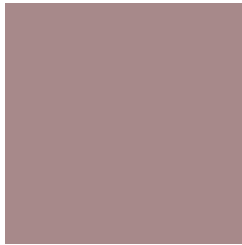
30, 67.844, 38.027



1, 6.581, 17.027

Previews

White Background



This preview shows how the CIELCh color 60, 12.126, 17.981 looks on a white background.

Color Contrast Check

Large Text (above 18pt) WCAG AA ✓ Pass

Any Text WCAG AA ✗ Fail

Large Text (above 18pt) WCAG AAA ✗ Fail

Any Text WCAG AAA ✗ Fail

Black Background



This preview shows how the CIE LCh color 60, 12.126, 17.981 looks on a black background.

Color Contrast Check

Large Text (above 18pt) WCAG AA ✓ Pass

Any Text WCAG AA ✓ Pass

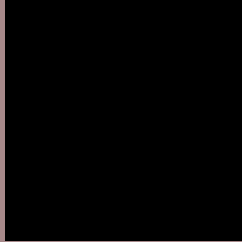
Large Text (above 18pt) WCAG AAA ✓ Pass

Any Text WCAG AAA × Fail

If you want to check with other color combinations, try the [Color Contrast Checker](#).

CIELCh 60, 12.126, 17.981

Background



This preview shows how black text looks on a background with the CIELCh color 60, 12.126, 17.981.



This preview shows how white text looks on a background with the CIELCh color 60, 12.126, 17.981.

Color Blindness Simulation

Color vision deficiency is a very complex topic, and I could not describe the different causes any better than Wikipedia does, so if you want to learn more, you should check out their [article about color blindness](#).

Dichromacy



Original Color

60, 12.126, 17.981

Protanopia

60, 1.919, 55.182

Deuteranopia

60, 8.519, 27.739



Tritanopia
60, 14.055, 354.841

Trichromacy



Original Color
60, 12.126, 17.981

Protanomaly
60, 5.183, 26.043

Deuteranomaly
60, 9.683, 23.643

Tritanomaly
60, 12.937, 3.112

Monochromacy



Original Color
60, 12.126, 17.981

Achromatopsia
61, 0.008, 296.813

Achromatomaly
61, 3.931, 19.680

CSS Examples

Text

The CSS property to change the color of the text to CIELCh 60, 12.126, 17.981 is called "color". The color property can be set on classes, ids or directly on the HTML element.

This example shows how text in the color `rgb(167, 137, 138)` looks like.

```
.text, #text, p{  
    color:rgb(167, 137, 138)  
}
```

If you want to add a text shadow in that color use the text-shadow property, you can generate a text shadow directly with our [CSS Text Shadow Generator](#).

Here you see how black text with a 4 pixel rgb(167, 137, 138) colored shadow looks like.

```
.shadow{ text-shadow: 4px 4px 2px rgb(167, 137, 138) }
```

Border

The CSS property to change the border of an element to CIELCh 60, 12.126, 17.981 is called "border". The border property can be set on classes, ids or directly on the HTML element.

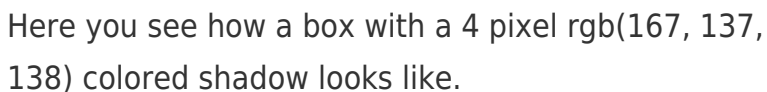
This example shows the color as border, it can be applied via the CSS property "border" or "border-color".

```
.border, #border, table{ border:4px solid rgb(167, 137, 138) }
```

If only the border color should be changed use the property `border-color`.

```
.border{ border-color:rgb(167, 137, 138) }
```

If you want to add a box shadow in that color use:



Here you see how a box with a 4 pixel `rgb(167, 137, 138)` colored shadow looks like.

```
.boxshadow{ -moz-box-shadow:4px 4px 4px 4px rgb(167, 137, 138); -webkit-box-shadow:4px 4px 4px 4px rgb(167, 137, 138); box-shadow:4px 4px 4px 4px rgb(167, 137, 138) }
```

Background

The CSS property to change the background color of an element to CIELCh 60, 12.126, 17.981 is called "background". The background property can be set on classes, ids or directly on the HTML element.

```
.background, #background, body{  
background: rgb(167, 137, 138) }
```

If only the background color should be changed can be used:

```
.background{ background-color: rgb(167,  
137, 138) }
```

This example shows the color as background, it is applied via the CSS property "background".

To optimize and compress your CSS code, you can use our [online CSS compressor and optimizer](#) based on csstidy. If you want to create a linear or radial gradient as background or border, check our [CSS Gradient Generator](#).

Hey! You found this booklet interesting? Support Converting Colors with the new Membership Option!

The pro membership hides all ads, plus gives you double the colors in the color bucket, and more awesome pro features!

[Learn more, Memberships starting at \\$2.50/m!](#)

**Follow me
on Twitter!**

@ConvertingColor