

Converting Colors

CIELCh(60, 15.881, 12.974)

Have a look what the booklet for
CIELCh(60, 15.881, 12.974) contains.

CIELCh(60, 15.918, 13.018)	3
<i>Conversions</i>	4
<i>Details</i>	6
<i>Harmonies</i>	11
<i>Previews</i>	20
<i>Color Blindness Simulation</i>	23
<i>CSS Examples</i>	26

Color

CIELCh(60, 15.918, 13.018)

Conversions

Conversions Part 1

Format	Color
Hex	AE878B
RGB	174, 135, 139
RGB Percent	68%, 53%, 55%
CMY	0.3183, 0.4712, 0.4555
CMYK	0.00, 0.22, 0.20, 0.32
HSL	354°, 19%, 61%
HSV	354°, 22%, 68%
XYZ	30.7094, 28.1233, 28.1759
YIQ	147.1170, 21.9600, 9.5120

Conversions

Conversions Part 2

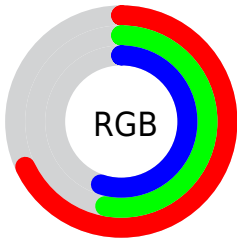
Format	Color
RYB	174, 135, 139
Decimal	11437963
CIELab	60.00, 15.51, 3.59
CIELCh	60, 15.918, 13.018
Yxy	28.1233, 0.3529, 0.3232
Android (android.graphics.Color)	4289628043 (0xFFAE878B)
YUV	147.1170, -4.0017, 23.5764
Hunter-Lab	53.0314, 10.5608, 5.6209

Details

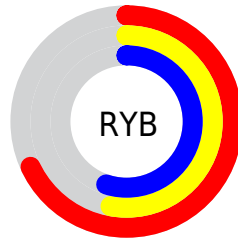
The CIELCh color $60, 15.918, 13.018$ is a dark color, and the websafe version is hex `CC9999`. A complement of this color would be $68, 14.150, 189.253$, and the grayscale version is $61, 0.008, 296.813$.

A 20% lighter version of the original color is $80, 16.068, 13.161$, and $40, 16.008, 13.161$ is the 20% darker color. If you saturate the color by 10%, you get $55, 23.697, 14.329$, and if you desaturate by 10%, it is $65, 8.546, 11.946$.

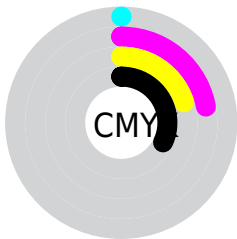
Distribution



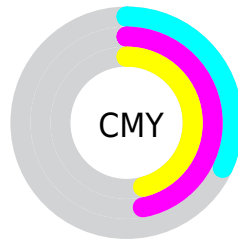
- Red (68%)
- Green (53%)
- Blue (55%)



- Red (68%)
- Yellow (53%)
- Blue (55%)



- Cyan (0%)
- Magenta (22%)
- Yellow (20%)
- Black (32%)



- Cyan (32%)
- Magenta (47%)
- Yellow (46%)

Brightness & Saturation Gradients

These gradients show how the CIELCh color 60, 15.918, 13.018 changes by changing the brightness by 10 percent. The first figure shows a shift by +10% for each color and the second figure -10%.

Similar to the brightness gradients but the following saturation gradients show a change of the CIELCh color 60, 15.918, 13.018 by changing the saturation by 10% instead.

60, 15.918, 13.018

60, 15.918, 13.018

100, 15.918,
13.018

50, 15.918, 13.018

80, 15.918, 13.018

40, 15.918, 13.018

90, 15.918, 13.018

30, 15.918, 13.018

20, 15.918, 13.018

10, 15.918, 13.018

0, 15.918, 13.018

60, 15.918, 13.018

60, 15.918, 13.018

55, 23.697, 14.329

65, 8.546, 11.946

51, 31.802, 15.956

70, 1.618, 10.838

47, 40.074, 18.012

75, 4.872, 190.509

43, 48.283, 20.623

80, 10.948,
189.837

40, 56.153, 23.908

85, 16.643,
189.289

38, 63.423, 27.899

37, 69.850, 32.384

90, 21.995,
188.818

36, 74.114, 35.507

95, 26.416,
189.944

95, 25.708,
197.832

Harmonies

Complementary

The Complementary color scheme is a pair of colors which are on the opposite of each other on the color wheel.



60, 15.918, 13.018



68, 14.150, 189.253

Rectangle

The Rectangle color scheme consists of four colors that form a rectangle on the color wheel.



60, 15.918, 13.018



60, 15.918, 63.018



60, 15.918, 193.018



60, 15.918, 243.018

Sweetspot

The Sweet Spot groups the original color and five complimentary colors.



60, 15.916, 13.024



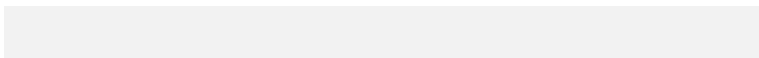
86, 5.878, 11.423



61, 25.431, 322.291



45, 3.857, 11.481



96, 0.011, 296.813



48, 0.006, 296.813

Same Dimension

The Same Dimension uses a secret algorithm to generate beautiful new colors.



60, 15.916, 13.024



74, 24.164, 13.649



64, 12.945, 59.730



34, 3.846, 11.638



31, 66.215, 34.949



2, 7.872, 12.483

Inverse Universe

The Inverse Universe completely reimagines the original color for something new.



60, 15.916, 13.024



74, 24.164, 13.649



64, 11.684, 244.591



34, 3.846, 11.638



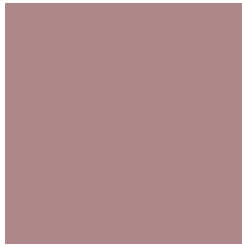
31, 66.215, 34.949



2, 7.872, 12.483

Previews

White Background



This preview shows how the CIELCh color 60, 15.918, 13.018 looks on a white background.

Color Contrast Check

Large Text (above 18pt) WCAG AA ✓ Pass

Any Text WCAG AA ✗ Fail

Large Text (above 18pt) WCAG AAA ✗ Fail

Any Text WCAG AAA ✗ Fail

Black Background



This preview shows how the CIE LCh color 60, 15.918, 13.018 looks on a black background.

Color Contrast Check

Large Text (above 18pt) WCAG AA ✓ Pass

Any Text WCAG AA ✓ Pass

Large Text (above 18pt) WCAG AAA ✓ Pass

Any Text WCAG AAA × Fail

If you want to check with other color combinations, try the [Color Contrast Checker](#).

CIELCh 60, 15.918, 13.018

Background



This preview shows how black text looks on a background with the CIELCh color 60, 15.918, 13.018.



This preview shows how white text looks on a background with the CIELCh color 60, 15.918, 13.018.

Color Blindness Simulation

Color vision deficiency is a very complex topic, and I could not describe the different causes any better than Wikipedia does, so if you want to learn more, you should check out their [article about color blindness](#).

Dichromacy



Original Color

60, 15.918, 13.018

Protanopia

60, 1.170, 19.150

Deuteranopia

60, 8.519, 27.739



Tritanopia
60, 16.888, 1.888

Trichromacy



Original Color
60, 15.918, 13.018

Protanomaly
60, 6.368, 14.925

Deuteranomaly
60, 11.303, 20.520

Tritanomaly
60, 16.632, 5.596

Monochromacy



Original Color
60, 15.918, 13.018

Achromatopsia
61, 0.008, 296.813

Achromatomaly
61, 5.553, 14.088

CSS Examples

Text

The CSS property to change the color of the text to CIELCh 60, 15.918, 13.018 is called "color". The color property can be set on classes, ids or directly on the HTML element.

This example shows how text in the color `rgb(174, 135, 139)` looks like.

```
.text, #text, p{  
    color:rgb(174, 135, 139)  
}
```

If you want to add a text shadow in that color use the text-shadow property, you can generate a text shadow directly with our [CSS Text Shadow Generator](#).

Here you see how black text with a 4 pixel rgb(174, 135, 139) colored shadow looks like.

```
.shadow{ text-shadow: 4px 4px 2px rgb(174, 135, 139) }
```

Border

The CSS property to change the border of an element to CIELCh 60, 15.918, 13.018 is called "border". The border property can be set on classes, ids or directly on the HTML element.

This example shows the color as border, it can be applied via the CSS property "border" or "border-color".

```
.border, #border, table{ border:4px solid rgb(174, 135, 139) }
```

If only the border color should be changed use the property `border-color`.

```
.border{ border-color:rgb(174, 135, 139) }
```

If you want to add a box shadow in that color use:

Here you see how a box with a 4 pixel `rgb(174, 135, 139)` colored shadow looks like.

```
.boxshadow{ -moz-box-shadow:4px 4px 4px  
4px rgb(174, 135, 139); -webkit-box-  
shadow:4px 4px 4px 4px rgb(174, 135, 139);  
box-shadow:4px 4px 4px 4px rgb(174, 135,  
139) }
```

Background

The CSS property to change the background color of an element to CIELCh 60, 15.918, 13.018 is called "background". The background property can be set on classes, ids or directly on the HTML element.

```
.background, #background, body{  
background: rgb(174, 135, 139) }
```

If only the background color should be changed can be used:

```
.background{ background-color: rgb(174,  
135, 139) }
```

This example shows the color as background, it is applied via the CSS property "background".

To optimize and compress your CSS code, you can use our [online CSS compressor and optimizer](#) based on csstidy. If you want to create a linear or radial gradient as background or border, check our [CSS Gradient Generator](#).

Hey! You found this booklet interesting? Support Converting Colors with the new Membership Option!

The pro membership hides all ads, plus gives you double the colors in the color bucket, and more awesome pro features!

[Learn more, Memberships starting at \\$2.50/m!](#)

**Follow me
on Twitter!**

@ConvertingColor