

Converting Colors

CIELCh(60, 17.175, 13.765)

Have a look what the booklet for
CIELCh(60, 17.175, 13.765) contains.

CIELCh(60, 17.175, 13.765)	3
<i>Conversions</i>	4
<i>Details</i>	6
<i>Harmonies</i>	11
<i>Previews</i>	20
<i>Color Blindness Simulation</i>	23
<i>CSS Examples</i>	26

Color

CIELCh(60, 17.175, 13.765)

Conversions

Conversions Part 1

Format	Color
Hex	B0868A
RGB	176, 134, 138
RGB Percent	69%, 53%, 54%
CMY	0.3097, 0.4744, 0.4587
CMYK	0.00, 0.24, 0.22, 0.31
HSL	354°, 21%, 61%
HSV	354°, 24%, 69%
XYZ	31.0255, 28.1233, 27.8449
YIQ	147.0140, 23.7480, 10.1480

Conversions

Conversions Part 2

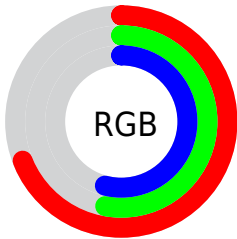
Format	Color
RYB	176, 134, 138
Decimal	11568778
CIELab	60.00, 16.68, 4.09
CIElCh	60, 17.175, 13.765
Yxy	28.1233, 0.3566, 0.3233
Android (android.graphics.Color)	4289758858 (0xFFB0868A)
YUV	147.0140, -4.4439, 25.4207
Hunter-Lab	53.0314, 11.6244, 5.9909

Details

The CIELCh color $60, 17.175, 13.765$ is a light color, and the websafe version is hex `CC9999`. A complement of this color would be $69, 15.107, 189.771$, and the grayscale version is $61, 0.008, 296.813$.

A 20% lighter version of the original color is $80, 17.243, 13.788$, and $40, 17.381, 14.088$ is the 20% darker color. If you saturate the color by 10%, you get $55, 25.099, 15.109$, and if you desaturate by 10%, it is $65, 9.663, 12.675$.

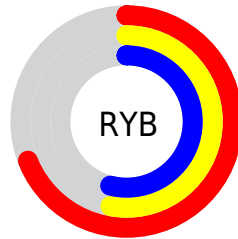
Distribution



Red (69%)

Green (53%)

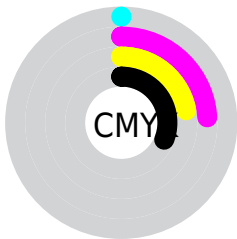
Blue (54%)



Red (69%)

Yellow (53%)

Blue (54%)

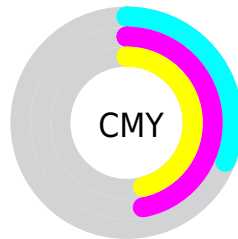


Cyan (0%)

Magenta (24%)

Yellow (22%)

Black (31%)



Cyan (31%)

Magenta (47%)

Yellow (46%)

Brightness & Saturation Gradients

These gradients show how the CIELCh color 60, 17.175, 13.765 changes by changing the brightness by 10 percent. The first figure shows a shift by +10% for each color and the second figure -10%.

Similar to the brightness gradients but the following saturation gradients show a change of the CIELCh color 60, 17.175, 13.765 by changing the saturation by 10% instead.

60, 17.175, 13.765

60, 17.175, 13.765

100, 17.175,
13.765

50, 17.175, 13.765

80, 17.175, 13.765

40, 17.175, 13.765

90, 17.175, 13.765

30, 17.175, 13.765

20, 17.175, 13.765

10, 17.175, 13.765

0, 17.175, 13.765

60, 17.175, 13.765

60, 17.175, 13.765

55, 25.099, 15.109

65, 9.663, 12.675

51, 33.346, 16.786

70, 2.605, 11.658

47, 41.748, 18.912

75, 4.002, 191.234

43, 50.062, 21.613

80, 10.182,
190.539

40, 58.010, 24.998

85, 15.969,
189.990

38, 65.324, 29.065

37, 71.721, 33.523

90, 21.401,
189.520

37, 75.172, 35.930

95, 25.620,
191.451

95, 25.103,
197.869

Harmonies

Complementary

The Complementary color scheme is a pair of colors which are on the opposite of each other on the color wheel.



60, 17.175, 13.765



69, 15.107, 189.771

Rectangle

The Rectangle color scheme consists of four colors that form a rectangle on the color wheel.



60, 17.175, 13.765



60, 17.175, 63.765



60, 17.175, 193.765



60, 17.175, 243.765

Sweetspot

The Sweet Spot groups the original color and five complimentary colors.



60, 17.173, 13.770



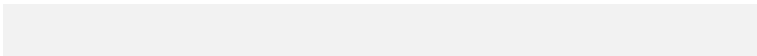
87, 5.924, 12.014



61, 27.465, 322.850



45, 3.852, 12.071



96, 0.011, 296.813



48, 0.006, 296.813

Same Dimension

The Same Dimension uses a secret algorithm to generate beautiful new colors.



60, 17.173, 13.770



73, 26.343, 14.491



64, 14.011, 61.497



35, 3.935, 12.230



31, 67.390, 35.414



2, 9.221, 13.314

Inverse Universe

The Inverse Universe completely reimagines the original color for something new.



60, 17.173, 13.770



73, 26.343, 14.491



64, 12.634, 246.954



35, 3.935, 12.230



31, 67.390, 35.414



2, 9.221, 13.314

Previews

White Background



This preview shows how the CIELCh color 60, 17.175, 13.765 looks on a white background.

Color Contrast Check

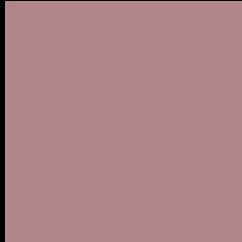
Large Text (above 18pt) WCAG AA ✓ Pass

Any Text WCAG AA ✗ Fail

Large Text (above 18pt) WCAG AAA ✗ Fail

Any Text WCAG AAA ✗ Fail

Black Background



This preview shows how the CIELCh color 60, 17.175, 13.765 looks on a black background.

Color Contrast Check

Large Text (above 18pt) WCAG AA ✓ Pass

Any Text WCAG AA ✓ Pass

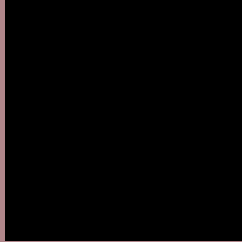
Large Text (above 18pt) WCAG AAA ✓ Pass

Any Text WCAG AAA × Fail

If you want to check with other color combinations, try the [Color Contrast Checker](#).

CIELCh 60, 17.175, 13.765

Background



This preview shows how black text looks on a background with the CIELCh color 60, 17.175, 13.765.

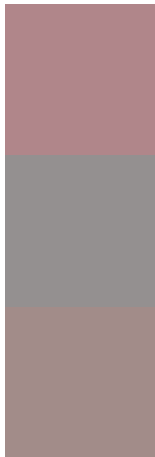


This preview shows how white text looks on a background with the CIELCh color 60, 17.175, 13.765.

Color Blindness Simulation

Color vision deficiency is a very complex topic, and I could not describe the different causes any better than Wikipedia does, so if you want to learn more, you should check out their [article about color blindness](#).

Dichromacy



Original Color
60, 17.175, 13.765

Protanopia
60, 1.561, 19.281

Deuteranopia
60, 9.039, 30.924



Tritanopia
60, 18.454, 3.802

Trichromacy



Original Color
60, 17.175, 13.765

Protanomaly
60, 7.231, 11.153

Deuteranomaly
60, 11.764, 23.278

Tritanomaly
60, 18.240, 7.214

Monochromacy



Original Color
60, 17.175, 13.765

Achromatopsia
61, 0.008, 296.813

Achromatomaly
60, 6.420, 9.927

CSS Examples

Text

The CSS property to change the color of the text to CIELCh 60, 17.175, 13.765 is called "color". The color property can be set on classes, ids or directly on the HTML element.

This example shows how text in the color `rgb(176, 134, 138)` looks like.

```
.text, #text, p{  
    color:rgb(176, 134, 138)  
}
```

If you want to add a text shadow in that color use the text-shadow property, you can generate a text shadow directly with our [CSS Text Shadow Generator](#).

Here you see how black text with a 4 pixel rgb(176, 134, 138) colored shadow looks like.

```
.shadow{ text-shadow: 4px 4px 2px rgb(176, 134, 138) }
```

Border

The CSS property to change the border of an element to CIELCh 60, 17.175, 13.765 is called "border". The border property can be set on classes, ids or directly on the HTML element.

This example shows the color as border, it can be applied via the CSS property "border" or "border-color".

```
.border, #border, table{ border:4px solid rgb(176, 134, 138) }
```

If only the border color should be changed use the property `border-color`.

```
.border{ border-color:rgb(176, 134, 138) }
```

If you want to add a box shadow in that color use:

Here you see how a box with a 4 pixel `rgb(176, 134, 138)` colored shadow looks like.

```
.boxshadow{ -moz-box-shadow:4px 4px 4px  
4px rgb(176, 134, 138); -webkit-box-  
shadow:4px 4px 4px 4px rgb(176, 134, 138);  
box-shadow:4px 4px 4px 4px rgb(176, 134,  
138) }
```

Background

The CSS property to change the background color of an element to CIELCh 60, 17.175, 13.765 is called "background". The background property can be set on classes, ids or directly on the HTML element.

```
.background, #background, body{  
background: rgb(176, 134, 138) }
```

If only the background color should be changed can be used:

```
.background{ background-color: rgb(176,  
134, 138) }
```

This example shows the color as background, it is applied via the CSS property "background".

To optimize and compress your CSS code, you can use our [online CSS compressor and optimizer](#) based on csstidy. If you want to create a linear or radial gradient as background or border, check our [CSS Gradient Generator](#).

Hey! You found this booklet interesting? Support Converting Colors with the new Membership Option!

The pro membership hides all ads, plus gives you double the colors in the color bucket, and more awesome pro features!

[Learn more, Memberships starting at \\$2.50/m!](#)

**Follow me
on Twitter!**

@ConvertingColor