

Converting Colors

CIELCh(60, 17.478, 70.836)

Have a look what the booklet for
CIELCh(60, 17.478, 70.836) contains.

CIELCh(60, 17.298, 70.725)	3
<i>Conversions</i>	4
<i>Details</i>	6
<i>Harmonies</i>	11
<i>Previews</i>	20
<i>Color Blindness Simulation</i>	23
<i>CSS Examples</i>	26

Color

CIELCh(60, 17.298, 70.725)

Conversions

Conversions Part 1

Format	Color
Hex	A58C74
RGB	165, 140, 116
RGB Percent	65%, 55%, 45%
CMY	0.3519, 0.4500, 0.5441
CMYK	0.00, 0.15, 0.30, 0.35
HSL	29°, 21%, 55%
HSV	29°, 30%, 65%
XYZ	28.1527, 28.1233, 20.5414
YIQ	144.7390, 22.6040, -2.1640

Conversions

Conversions Part 2

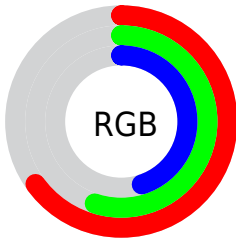
Format	Color
RYB	165, 163, 116
Decimal	10849396
CIELab	60.00, 5.71, 16.33
CIElCh	60, 17.298, 70.725
Yxy	28.1233, 0.3665, 0.3661
Android (android.graphics.Color)	4289039476 (0xFFA58C74)
YUV	144.7390, -14.1683, 17.7689
Hunter-Lab	53.0314, 1.9549, 14.1564

Details

The CIELCh color $60, 17.298, 70.725$ is a dark color, and the websafe version is hex 999966 . A complement of this color would be $58, 15.881, 258.823$, and the grayscale version is $60, 0.008, 296.813$.

A 20% lighter version of the original color is $80, 17.501, 71.439$, and $40, 17.065, 70.780$ is the 20% darker color. If you saturate the color by 10%, you get $57, 23.697, 69.516$, and if you desaturate by 10%, it is $63, 11.192, 71.937$.

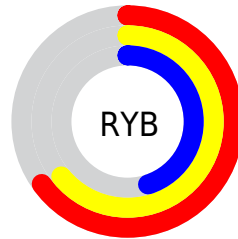
Distribution



Red (65%)

Green (55%)

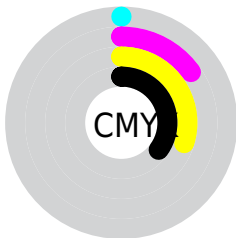
Blue (45%)



Red (65%)

Yellow (64%)

Blue (45%)

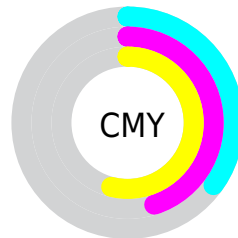


Cyan (0%)

Magenta (15%)

Yellow (30%)

Black (35%)



Cyan (35%)

Magenta (45%)

Yellow (54%)

Brightness & Saturation Gradients

These gradients show how the CIELCh color 60, 17.298, 70.725 changes by changing the brightness by 10 percent. The first figure shows a shift by +10% for each color and the second figure -10%.

Similar to the brightness gradients but the following saturation gradients show a change of the CIELCh color 60, 17.298, 70.725 by changing the saturation by 10% instead.

■ 60, 17.298, 70.725

■ 60, 17.298, 70.725

■ 100, 17.298,
70.725

■ 50, 17.298, 70.725

■ 80, 17.298, 70.725

■ 40, 17.298, 70.725

■ 90, 17.298, 70.725

■ 30, 17.298, 70.725

■ 20, 17.298, 70.725

■ 10, 17.298, 70.725

■ 0, 17.298, 70.725

■ 60, 17.298, 70.725

■ 60, 17.298, 70.725

■ 57, 23.697, 69.516

■ 63, 11.192, 71.937

■ 55, 30.376, 68.291

■ 65, 5.369, 73.108

53, 37.274, 67.046

68, 0.191, 256.064

50, 44.242, 65.737

71, 5.511, 255.566

48, 50.963, 64.263

73, 10.616,
256.660

46, 56.840, 62.410

76, 15.532,
257.735

44, 61.590, 60.167

44, 61.764, 60.105

79, 20.279,
258.774

82, 24.877,
259.772

84, 25.268,
253.371

Harmonies

Complementary

The Complementary color scheme is a pair of colors which are on the opposite of each other on the color wheel.



60, 17.298, 70.725



58, 15.881, 258.823

Rectangle

The Rectangle color scheme consists of four colors that form a rectangle on the color wheel.



60, 17.298, 70.725



60, 17.298, 120.725



60, 17.298, 250.725



60, 17.298, 300.725

Sweetspot

The Sweet Spot groups the original color and five complimentary colors.



60, 17.298, 70.733



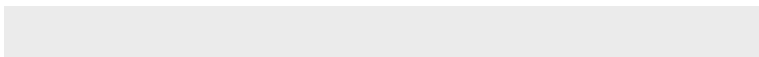
83, 6.170, 73.164



55, 24.043, 345.409



43, 4.294, 73.007



93, 0.011, 296.813



45, 0.006, 296.813

Same Dimension

The Same Dimension uses a secret algorithm to generate beautiful new colors.



60, 17.298, 70.733



74, 26.374, 69.883



67, 26.282, 106.651



33, 3.108, 73.153



39, 56.087, 60.544



3, 4.624, 69.082

Inverse Universe

The Inverse Universe completely reimagines the original color for something new.



58, 15.881, 258.823



70, 23.666, 260.257



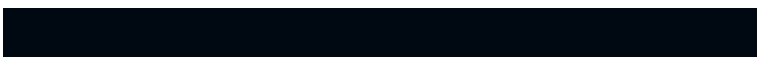
51, 28.136, 293.110



33, 3.039, 255.542



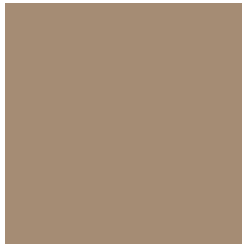
32, 45.689, 282.101



2, 4.935, 259.412

Previews

White Background



This preview shows how the CIELCh color 60, 17.298, 70.725 looks on a white background.

Color Contrast Check

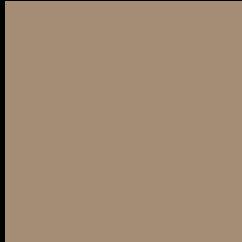
Large Text (above 18pt) WCAG AA ✓ Pass

Any Text WCAG AA × Fail

Large Text (above 18pt) WCAG AAA × Fail

Any Text WCAG AAA × Fail

Black Background



This preview shows how the CIELCh color 60, 17.298, 70.725 looks on a black background.

Color Contrast Check

Large Text (above 18pt) WCAG AA ✓ Pass

Any Text WCAG AA ✓ Pass

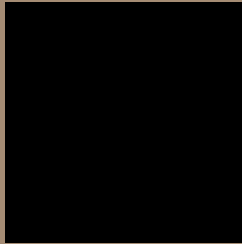
Large Text (above 18pt) WCAG AAA ✓ Pass

Any Text WCAG AAA × Fail

If you want to check with other color combinations, try the [Color Contrast Checker](#).

CIELCh 60, 17.298, 70.725

Background



This preview shows how black text looks on a background with the CIELCh color 60, 17.298, 70.725.



This preview shows how white text looks on a background with the CIELCh color 60, 17.298, 70.725.

Color Blindness Simulation

Color vision deficiency is a very complex topic, and I could not describe the different causes any better than Wikipedia does, so if you want to learn more, you should check out their [article about color blindness](#).

Dichromacy



Original Color

60, 17.298, 70.725

Protanopia

60, 15.078, 94.039

Deuteranopia

60, 18.044, 65.485



Tritanopia
60, 14.415, 355.598

Trichromacy



Original Color
60, 17.298, 70.725

Protanomaly
60, 15.776, 86.560

Deuteranomaly
60, 17.740, 66.474

Tritanomaly
60, 12.253, 25.820

Monochromacy



Original Color
60, 17.298, 70.725

Achromatopsia
60, 0.008, 296.813

Achromatomaly
60, 5.761, 70.829

CSS Examples

Text

The CSS property to change the color of the text to CIELCh 60, 17.298, 70.725 is called "color". The color property can be set on classes, ids or directly on the HTML element.

This example shows how text in the color `rgb(165, 140, 116)` looks like.

```
.text, #text, p{  
    color:rgb(165, 140, 116)  
}
```

If you want to add a text shadow in that color use the text-shadow property, you can generate a text shadow directly with our [CSS Text Shadow Generator](#).

Here you see how black text with a 4 pixel rgb(165, 140, 116) colored shadow looks like.

```
.shadow{ text-shadow: 4px 4px 2px rgb(165, 140, 116) }
```

Border

The CSS property to change the border of an element to CIELCh 60, 17.298, 70.725 is called "border". The border property can be set on classes, ids or directly on the HTML element.

This example shows the color as border, it can be applied via the CSS property "border" or "border-color".

```
.border, #border, table{ border:4px solid rgb(165, 140, 116) }
```

If only the border color should be changed use the property `border-color`.

```
.border{ border-color:rgb(165, 140, 116) }
```

If you want to add a box shadow in that color use:

Here you see how a box with a 4 pixel `rgb(165, 140, 116)` colored shadow looks like.

```
.boxshadow{ -moz-box-shadow:4px 4px 4px  
4px rgb(165, 140, 116); -webkit-box-  
shadow:4px 4px 4px 4px rgb(165, 140, 116);  
box-shadow:4px 4px 4px 4px rgb(165, 140,  
116) }
```

Background

The CSS property to change the background color of an element to CIELCh 60, 17.298, 70.725 is called "background". The background property can be set on classes, ids or directly on the HTML element.

```
.background, #background, body{  
background: rgb(165, 140, 116) }
```

If only the background color should be changed can be used:

```
.background{ background-color: rgb(165,  
140, 116) }
```

This example shows the color as background, it is applied via the CSS property "background".

To optimize and compress your CSS code, you can use our [online CSS compressor and optimizer](#) based on csstidy. If you want to create a linear or radial gradient as background or border, check our [CSS Gradient Generator](#).

Hey! You found this booklet interesting? Support Converting Colors with the new Membership Option!

The pro membership hides all ads, plus gives you double the colors in the color bucket, and more awesome pro features!

[Learn more, Memberships starting at \\$2.50/m!](#)

**Follow me
on Twitter!**

@ConvertingColor