

Converting Colors

CIELCh(60, 19.302, 53.354)

Have a look what the booklet for
CIELCh(60, 19.302, 53.354) contains.

CIELCh(60, 19.238, 53.997)	3
<i>Conversions</i>	4
<i>Details</i>	6
<i>Harmonies</i>	11
<i>Previews</i>	20
<i>Color Blindness Simulation</i>	23
<i>CSS Examples</i>	26

Color

CIELCh(60, 19.238, 53.997)

Conversions

Conversions Part 1

Format	Color
Hex	AE8976
RGB	174, 137, 118
RGB Percent	68%, 54%, 46%
CMY	0.3184, 0.4634, 0.5379
CMYK	0.00, 0.21, 0.32, 0.32
HSL	20°, 26%, 57%
HSV	20°, 32%, 68%
XYZ	29.5953, 28.1233, 20.9552
YIQ	145.8970, 28.1510, 1.9350

Conversions

Conversions Part 2

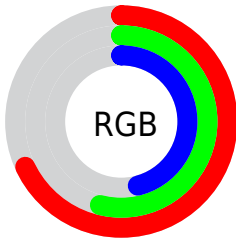
Format	Color
RYB	174, 147, 118
Decimal	11438454
CIELab	60.00, 11.31, 15.56
CIELCh	60, 19.238, 53.997
Yxy	28.1233, 0.3762, 0.3575
Android (android.graphics.Color)	4289628534 (0xFFAE8976)
YUV	145.8970, -13.7532, 24.6463
Hunter-Lab	53.0314, 6.8107, 13.6938

Details

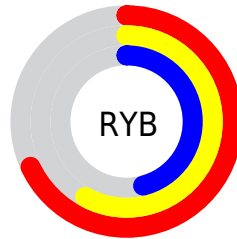
The CIELCh color **60, 19.238, 53.997** is a dark color, and the websafe version is hex **CC9999**. A complement of this color would be **62, 16.131, 240.241**, and the grayscale version is **60, 0.008, 296.813**.

A 20% lighter version of the original color is **80, 19.181, 53.702**, and **40, 18.931, 53.565** is the 20% darker color. If you saturate the color by 10%, you get **57, 26.147, 53.388**, and if you desaturate by 10%, it is **63, 12.793, 54.689**.

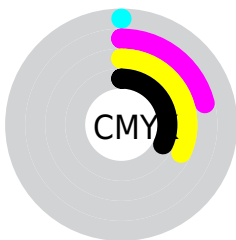
Distribution



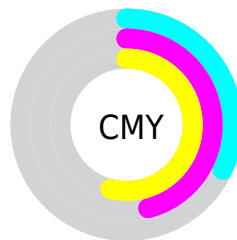
- Red (68%)
- Green (54%)
- Blue (46%)



- Red (68%)
- Yellow (58%)
- Blue (46%)



- Cyan (0%)
- Magenta (21%)
- Yellow (32%)
- Black (32%)



- Cyan (32%)
- Magenta (46%)
- Yellow (54%)

Brightness & Saturation Gradients

These gradients show how the CIELCh color 60, 19.238, 53.997 changes by changing the brightness by 10 percent. The first figure shows a shift by +10% for each color and the second figure -10%.

Similar to the brightness gradients but the following saturation gradients show a change of the CIELCh color 60, 19.238, 53.997 by changing the saturation by 10% instead.

60, 19.238, 53.997

60, 19.238, 53.997

100, 19.238,
53.997

50, 19.238, 53.997

80, 19.238, 53.997

40, 19.238, 53.997

90, 19.238, 53.997

30, 19.238, 53.997

20, 19.238, 53.997

10, 19.238, 53.997

0, 19.238, 53.997

60, 19.238, 53.997

60, 19.238, 53.997

57, 26.147, 53.388

63, 12.793, 54.689

54, 33.522, 52.853

67, 6.787, 55.413

51, 41.316, 52.398

70, 1.184, 55.902

48, 49.378, 51.976

74, 4.060, 237.195

45, 57.350, 51.452

77, 8.982, 237.965

43, 64.475, 50.503

81, 13.622,
238.777

41, 69.316, 49.620

84, 18.015,
239.590

88, 21.644,
238.188

91, 22.054,
218.722

Harmonies

Complementary

The Complementary color scheme is a pair of colors which are on the opposite of each other on the color wheel.



60, 19.238, 53.997



62, 16.131, 240.241

Rectangle

The Rectangle color scheme consists of four colors that form a rectangle on the color wheel.



60, 19.238, 53.997



60, 19.238, 103.997



60, 19.238, 233.997



60, 19.238, 283.997

Sweetspot

The Sweet Spot groups the original color and five complimentary colors.



60, 19.237, 54.004



86, 6.857, 55.558



56, 29.982, 338.080



45, 4.739, 55.460



96, 0.011, 296.813



48, 0.006, 296.813

Same Dimension

The Same Dimension uses a secret algorithm to generate beautiful new colors.



60, 19.237, 54.004



74, 29.737, 53.535



67, 25.758, 98.728



35, 3.109, 55.619



36, 62.069, 50.045



3, 6.420, 48.686

Inverse Universe

The Inverse Universe completely reimagines the original color for something new.



62, 16.131, 240.241



77, 23.766, 241.558



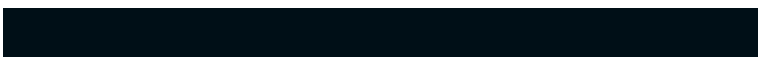
54, 26.974, 286.786



35, 2.974, 237.368



40, 34.995, 262.183



4, 6.568, 247.863

Previews

White Background



This preview shows how the CIELCh color 60, 19.238, 53.997 looks on a white background.

Color Contrast Check

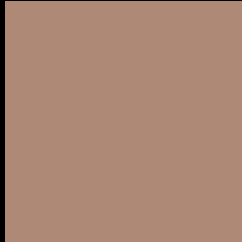
Large Text (above 18pt) WCAG AA ✓ Pass

Any Text WCAG AA × Fail

Large Text (above 18pt) WCAG AAA × Fail

Any Text WCAG AAA × Fail

Black Background



This preview shows how the CIELCh color 60, 19.238, 53.997 looks on a black background.

Color Contrast Check

Large Text (above 18pt) WCAG AA ✓ Pass

Any Text WCAG AA ✓ Pass

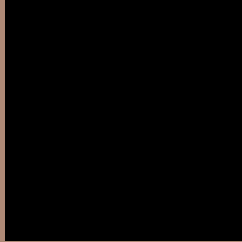
Large Text (above 18pt) WCAG AAA ✓ Pass

Any Text WCAG AAA × Fail

If you want to check with other color combinations, try the [Color Contrast Checker](#).

CIELCh 60, 19.238, 53.997

Background



This preview shows how black text looks on a background with the CIELCh color 60, 19.238, 53.997.



This preview shows how white text looks on a background with the CIELCh color 60, 19.238, 53.997.

Color Blindness Simulation

Color vision deficiency is a very complex topic, and I could not describe the different causes any better than Wikipedia does, so if you want to learn more, you should check out their [article about color blindness](#).

Dichromacy



Original Color

60, 19.238, 53.997

Protanopia

60, 12.911, 91.961

Deuteranopia

60, 17.616, 64.354



Tritanopia
60, 18.454, 3.802

Trichromacy



Original Color
60, 19.238, 53.997

Protanomaly
60, 14.558, 73.591

Deuteranomaly
60, 18.206, 60.391

Tritanomaly
60, 17.234, 21.185

Monochromacy



Original Color
60, 19.238, 53.997

Achromatopsia
61, 0.008, 296.813

Achromatomaly
60, 6.538, 56.645

CSS Examples

Text

The CSS property to change the color of the text to CIELCh 60, 19.238, 53.997 is called "color". The color property can be set on classes, ids or directly on the HTML element.

This example shows how text in the color `rgb(174, 137, 118)` looks like.

```
.text, #text, p{  
    color:rgb(174, 137, 118)  
}
```

If you want to add a text shadow in that color use the text-shadow property, you can generate a text shadow directly with our [CSS Text Shadow Generator](#).

Here you see how black text with a 4 pixel rgb(174, 137, 118) colored shadow looks like.

```
.shadow{ text-shadow: 4px 4px 2px rgb(174, 137, 118) }
```

Border

The CSS property to change the border of an element to CIELCh 60, 19.238, 53.997 is called "border". The border property can be set on classes, ids or directly on the HTML element.

This example shows the color as border, it can be applied via the CSS property "border" or "border-color".

```
.border, #border, table{ border:4px solid rgb(174, 137, 118) }
```

If only the border color should be changed use the property `border-color`.

```
.border{ border-color:rgb(174, 137, 118) }
```

If you want to add a box shadow in that color use:

Here you see how a box with a 4 pixel `rgb(174, 137, 118)` colored shadow looks like.

```
.boxshadow{ -moz-box-shadow:4px 4px 4px  
4px rgb(174, 137, 118); -webkit-box-  
shadow:4px 4px 4px 4px rgb(174, 137, 118);  
box-shadow:4px 4px 4px 4px rgb(174, 137,  
118) }
```

Background

The CSS property to change the background color of an element to CIELCh 60, 19.238, 53.997 is called "background". The background property can be set on classes, ids or directly on the HTML element.

```
.background, #background, body{  
background: rgb(174, 137, 118) }
```

If only the background color should be changed can be used:

```
.background{ background-color: rgb(174,  
137, 118) }
```

This example shows the color as background, it is applied via the CSS property "background".

To optimize and compress your CSS code, you can use our [online CSS compressor and optimizer](#) based on csstidy. If you want to create a linear or radial gradient as background or border, check our [CSS Gradient Generator](#).

Hey! You found this booklet interesting? Support Converting Colors with the new Membership Option!

The pro membership hides all ads, plus gives you double the colors in the color bucket, and more awesome pro features!

[Learn more, Memberships starting at \\$2.50/m!](#)

**Follow me
on Twitter!**

@ConvertingColor