

Converting Colors

CIELCh(60, 19.374, 21.415)

Have a look what the booklet for
CIELCh(60, 19.374, 21.415) contains.

CIELCh(60, 19.372, 21.426)	3
<i>Conversions</i>	4
<i>Details</i>	6
<i>Harmonies</i>	11
<i>Previews</i>	20
<i>Color Blindness Simulation</i>	23
<i>CSS Examples</i>	26

Color

CIELCh(60, 19.372, 21.426)

Conversions

Conversions Part 1

Format	Color
Hex	B48585
RGB	180, 133, 133
RGB Percent	71%, 52%, 52%
CMY	0.2946, 0.4789, 0.4789
CMYK	0.00, 0.26, 0.26, 0.29
HSL	0°, 24%, 61%
HSV	0°, 26%, 71%
XYZ	31.3923, 28.1233, 25.9234
YIQ	147.0530, 28.0120, 9.9640

Conversions

Conversions Part 2

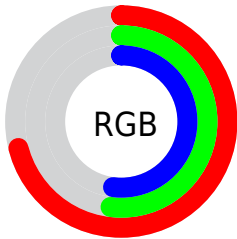
Format	Color
RYB	180, 133, 133
Decimal	11830661
CIELab	60.00, 18.03, 7.08
CIElCh	60, 19.372, 21.426
Yxy	28.1233, 0.3674, 0.3292
Android (android.graphics.Color)	4290020741 (0xFFB48585)
YUV	147.0530, -6.9281, 28.8945
Hunter-Lab	53.0314, 12.8591, 8.1392

Details

The CIELCh color **60, 19.372, 21.426** is a light color, and the websafe version is hex **CC9999**. A complement of this color would be **70, 16.281, 198.120**, and the grayscale version is **61, 0.008, 296.813**.

A 20% lighter version of the original color is **80, 19.648, 20.992**, and **40, 19.331, 20.501** is the 20% darker color. If you saturate the color by 10%, you get **55, 27.777, 22.669**, and if you desaturate by 10%, it is **65, 11.505, 20.469**.

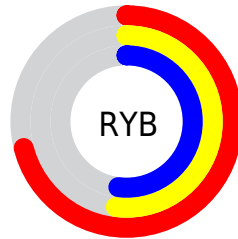
Distribution



Red (71%)

Green (52%)

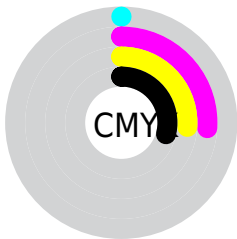
Blue (52%)



Red (71%)

Yellow (52%)

Blue (52%)

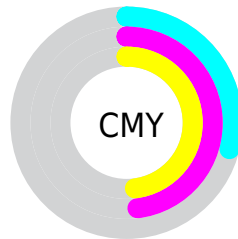


Cyan (0%)

Magenta (26%)

Yellow (26%)

Black (29%)



Cyan (29%)

Magenta (48%)

Yellow (48%)

Brightness & Saturation Gradients

These gradients show how the CIELCh color 60, 19.372, 21.426 changes by changing the brightness by 10 percent. The first figure shows a shift by +10% for each color and the second figure -10%.

Similar to the brightness gradients but the following saturation gradients show a change of the CIELCh color 60, 19.372, 21.426 by changing the saturation by 10% instead.

60, 19.372, 21.426

60, 19.372, 21.426

100, 19.372,
21.426

50, 19.372, 21.426

80, 19.372, 21.426

40, 19.372, 21.426

90, 19.372, 21.426

30, 19.372, 21.426

20, 19.372, 21.426

10, 19.372, 21.426

0, 19.372, 21.426

60, 19.372, 21.426

60, 19.372, 21.426

55, 27.777, 22.669

65, 11.505, 20.469

51, 36.646, 24.281

70, 4.203, 19.661

47, 45.817, 26.373

75, 2.557, 199.411

43, 55.042, 29.039

81, 8.813, 198.818

41, 63.975, 32.281

86, 14.615,
198.436

39, 72.071, 35.824

91, 20.014,
198.136

38, 78.228, 38.848

37, 80.451, 39.981

95, 24.021,
197.936

Harmonies

Complementary

The Complementary color scheme is a pair of colors which are on the opposite of each other on the color wheel.



60, 19.372, 21.426



70, 16.281, 198.120

Rectangle

The Rectangle color scheme consists of four colors that form a rectangle on the color wheel.



60, 19.372, 21.426



60, 19.372, 71.426



60, 19.372, 201.426



60, 19.372, 251.426

Sweetspot

The Sweet Spot groups the original color and five complimentary colors.



60, 19.370, 21.432



88, 6.867, 19.825



61, 31.458, 325.842



46, 4.905, 19.942



96, 0.011, 296.813



49, 0.007, 296.813

Same Dimension

The Same Dimension uses a secret algorithm to generate beautiful new colors.



60, 19.370, 21.432



74, 29.101, 22.061



66, 16.273, 72.212



35, 3.911, 19.917



31, 70.929, 39.527



2, 9.155, 19.409

Inverse Universe

The Inverse Universe completely reimagines the original color for something new.



70, 16.281, 198.120



88, 23.492, 197.880



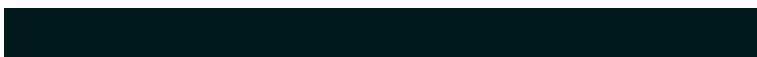
63, 15.171, 259.329



37, 3.690, 198.992



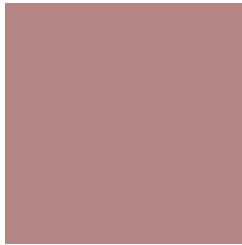
57, 34.223, 196.396



7, 9.137, 199.110

Previews

White Background



This preview shows how the CIELCh color 60, 19.372, 21.426 looks on a white background.

Color Contrast Check

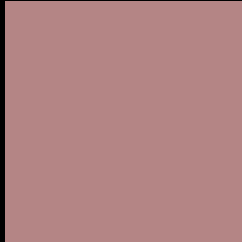
Large Text (above 18pt) WCAG AA ✓ Pass

Any Text WCAG AA ✗ Fail

Large Text (above 18pt) WCAG AAA ✗ Fail

Any Text WCAG AAA ✗ Fail

Black Background



This preview shows how the CIELCh color 60, 19.372, 21.426 looks on a black background.

Color Contrast Check

Large Text (above 18pt) WCAG AA ✓ Pass

Any Text WCAG AA ✓ Pass

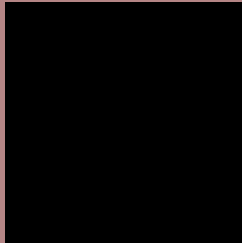
Large Text (above 18pt) WCAG AAA ✓ Pass

Any Text WCAG AAA × Fail

If you want to check with other color combinations, try the [Color Contrast Checker](#).

CIELCh 60, 19.372, 21.426

Background



This preview shows how black text looks on a background with the CIELCh color 60, 19.372, 21.426.



This preview shows how white text looks on a background with the CIELCh color 60, 19.372, 21.426.

Color Blindness Simulation

Color vision deficiency is a very complex topic, and I could not describe the different causes any better than Wikipedia does, so if you want to learn more, you should check out their [article about color blindness](#).

Dichromacy



Original Color

60, 19.372, 21.426

Protanopia

60, 3.425, 74.542

Deuteranopia

60, 10.833, 44.633



Tritanopia
60, 20.437, 5.832

Trichromacy



Original Color
60, 19.372, 21.426

Protanomaly
60, 8.231, 31.917

Deuteranomaly
60, 13.888, 32.292

Tritanomaly
60, 20.209, 10.491

Monochromacy



Original Color
60, 19.372, 21.426

Achromatopsia
61, 0.008, 296.813

Achromatomaly
60, 6.752, 20.012

CSS Examples

Text

The CSS property to change the color of the text to CIELCh 60, 19.372, 21.426 is called "color". The color property can be set on classes, ids or directly on the HTML element.

This example shows how text in the color `rgb(180, 133, 133)` looks like.

```
.text, #text, p{  
    color:rgb(180, 133, 133)  
}
```

If you want to add a text shadow in that color use the text-shadow property, you can generate a text shadow directly with our [CSS Text Shadow Generator](#).

Here you see how black text with a 4 pixel rgb(180, 133, 133) colored shadow looks like.

```
.shadow{ text-shadow: 4px 4px 2px rgb(180, 133, 133) }
```

Border

The CSS property to change the border of an element to CIELCh 60, 19.372, 21.426 is called "border". The border property can be set on classes, ids or directly on the HTML element.

This example shows the color as border, it can be applied via the CSS property "border" or "border-color".

```
.border, #border, table{ border:4px solid rgb(180, 133, 133) }
```

If only the border color should be changed use the property `border-color`.

```
.border{ border-color:rgb(180, 133, 133) }
```

If you want to add a box shadow in that color use:

Here you see how a box with a 4 pixel `rgb(180, 133, 133)` colored shadow looks like.

```
.boxshadow{ -moz-box-shadow:4px 4px 4px  
4px rgb(180, 133, 133); -webkit-box-  
shadow:4px 4px 4px 4px rgb(180, 133, 133);  
box-shadow:4px 4px 4px 4px rgb(180, 133,  
133) }
```

Background

The CSS property to change the background color of an element to CIELCh 60, 19.372, 21.426 is called "background". The background property can be set on classes, ids or directly on the HTML element.

```
.background, #background, body{  
background: rgb(180, 133, 133) }
```

If only the background color should be changed can be used:

```
.background{ background-color: rgb(180,  
133, 133) }
```

This example shows the color as background, it is applied via the CSS property "background".

To optimize and compress your CSS code, you can use our [online CSS compressor and optimizer](#) based on csstidy. If you want to create a linear or radial gradient as background or border, check our [CSS Gradient Generator](#).

Hey! You found this booklet interesting? Support Converting Colors with the new Membership Option!

The pro membership hides all ads, plus gives you double the colors in the color bucket, and more awesome pro features!

[Learn more, Memberships starting at \\$2.50/m!](#)

**Follow me
on Twitter!**

@ConvertingColor