

Converting Colors

CIELCh(60, 19.642, 24.172)

Have a look what the booklet for
CIELCh(60, 19.642, 24.172) contains.

CIELCh(60, 19.525, 24.671)	3
<i>Conversions</i>	4
<i>Details</i>	6
<i>Harmonies</i>	11
<i>Previews</i>	20
<i>Color Blindness Simulation</i>	23
<i>CSS Examples</i>	26

Color

CIELCh(60, 19.525, 24.671)

Conversions

Conversions Part 1

Format	Color
Hex	B48583
RGB	180, 133, 131
RGB Percent	71%, 52%, 51%
CMY	0.2941, 0.4784, 0.4862
CMYK	0.00, 0.26, 0.27, 0.29
HSL	2°, 25%, 61%
HSV	2°, 27%, 71%
XYZ	31.3132, 28.1233, 25.2559
YIQ	146.8250, 28.6540, 9.3420

Conversions

Conversions Part 2

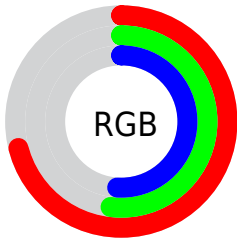
Format	Color
R_{YB}	180, 133, 131
Decimal	11830659
CIE _{Lab}	60.00, 17.74, 8.15
CIE _{LCh}	60, 19.525, 24.671
Yxy	28.1233, 0.3697, 0.3321
Android (android.graphics.Color)	4290020739 (0xFFB48583)
YUV	146.8250, -7.8017, 29.0945
Hunter-Lab	53.0314, 12.5929, 8.8855

Details

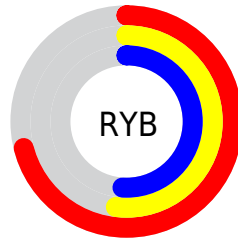
The CIELCh color **60, 19.525, 24.671** is a light color, and the websafe version is hex **CC9999**. A complement of this color would be **69, 16.214, 202.040**, and the grayscale version is **61, 0.008, 296.813**.

A 20% lighter version of the original color is **80, 19.766, 24.029**, and **40, 19.511, 23.995** is the 20% darker color. If you saturate the color by 10%, you get **55, 27.730, 25.749**, and if you desaturate by 10%, it is **65, 11.872, 23.859**.

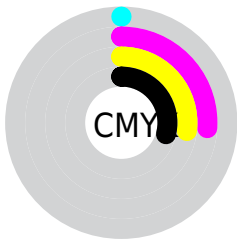
Distribution



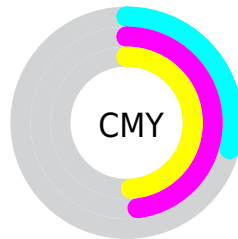
- Red (71%)
- Green (52%)
- Blue (51%)



- Red (71%)
- Yellow (52%)
- Blue (51%)



- Cyan (0%)
- Magenta (26%)
- Yellow (27%)
- Black (29%)



- Cyan (29%)
- Magenta (48%)
- Yellow (49%)

Brightness & Saturation Gradients

These gradients show how the CIELCh color 60, 19.525, 24.671 changes by changing the brightness by 10 percent. The first figure shows a shift by +10% for each color and the second figure -10%.

Similar to the brightness gradients but the following saturation gradients show a change of the CIELCh color 60, 19.525, 24.671 by changing the saturation by 10% instead.

60, 19.525, 24.671

60, 19.525, 24.671

100, 19.525,
24.671

50, 19.525, 24.671

80, 19.525, 24.671

40, 19.525, 24.671

90, 19.525, 24.671

30, 19.525, 24.671

20, 19.525, 24.671

10, 19.525, 24.671

0, 19.525, 24.671

60, 19.525, 24.671

60, 19.525, 24.671

55, 27.730, 25.749

65, 11.872, 23.859

51, 36.434, 27.160

70, 4.783, 23.194

47, 45.507, 29.000

75, 1.769, 203.140

44, 54.732, 31.336

80, 7.827, 202.577

41, 63.772, 34.144

85, 13.439,
202.297

39, 72.020, 37.131

90, 18.657,
202.098

38, 78.325, 39.614

38, 79.932, 40.435

95, 23.609,
199.374

95, 23.983,
197.939

Harmonies

Complementary

The Complementary color scheme is a pair of colors which are on the opposite of each other on the color wheel.



60, 19.525, 24.671



69, 16.214, 202.040

Rectangle

The Rectangle color scheme consists of four colors that form a rectangle on the color wheel.



60, 19.525, 24.671



60, 19.525, 74.671



60, 19.525, 204.671



60, 19.525, 254.671

Sweetspot

The Sweet Spot groups the original color and five complimentary colors.



60, 19.523, 24.677



88, 6.596, 23.254



61, 32.064, 326.830



46, 4.712, 23.351



96, 0.011, 296.813



49, 0.007, 296.813

Same Dimension

The Same Dimension uses a secret algorithm to generate beautiful new colors.



60, 19.523, 24.677



73, 30.079, 25.322



66, 17.328, 75.498



35, 3.757, 23.331



32, 70.372, 40.134



2, 8.871, 22.121

Inverse Universe

The Inverse Universe completely reimagines the original color for something new.



69, 16.214, 202.040



87, 23.779, 201.887



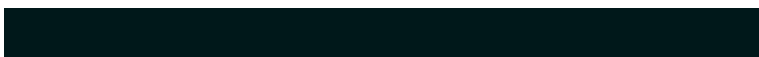
63, 16.346, 263.112



37, 3.542, 202.671



55, 32.405, 202.976



7, 8.595, 204.650

Previews

White Background



This preview shows how the CIELCh color 60, 19.525, 24.671 looks on a white background.

Color Contrast Check

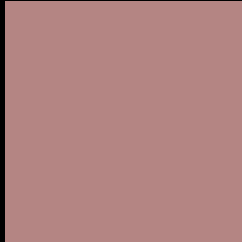
Large Text (above 18pt) WCAG AA ✓ Pass

Any Text WCAG AA ✗ Fail

Large Text (above 18pt) WCAG AAA ✗ Fail

Any Text WCAG AAA ✗ Fail

Black Background



This preview shows how the CIE LCh color 60, 19.525, 24.671 looks on a black background.

Color Contrast Check

Large Text (above 18pt) WCAG AA ✓ Pass

Any Text WCAG AA ✓ Pass

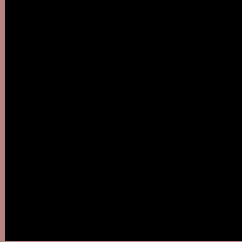
Large Text (above 18pt) WCAG AAA ✓ Pass

Any Text WCAG AAA × Fail

If you want to check with other color combinations, try the [Color Contrast Checker](#).

CIELCh 60, 19.525, 24.671

Background



This preview shows how black text looks on a background with the CIELCh color 60, 19.525, 24.671.



This preview shows how white text looks on a background with the CIELCh color 60, 19.525, 24.671.

Color Blindness Simulation

Color vision deficiency is a very complex topic, and I could not describe the different causes any better than Wikipedia does, so if you want to learn more, you should check out their [article about color blindness](#).

Dichromacy



Original Color

60, 19.525, 24.671

Protanopia

60, 4.398, 82.828

Deuteranopia

60, 11.401, 49.584



Tritanopia
60, 20.859, 6.214

Trichromacy



Original Color
60, 19.525, 24.671

Protanomaly
60, 8.577, 39.178

Deuteranomaly
60, 14.242, 36.598

Tritanomaly
60, 20.139, 13.643

Monochromacy



Original Color
60, 19.525, 24.671

Achromatopsia
61, 0.008, 296.813

Achromatomaly
60, 6.792, 24.735

CSS Examples

Text

The CSS property to change the color of the text to CIELCh 60, 19.525, 24.671 is called "color". The color property can be set on classes, ids or directly on the HTML element.

This example shows how text in the color `rgb(180, 133, 131)` looks like.

```
.text, #text, p{  
    color:rgb(180, 133, 131)  
}
```

If you want to add a text shadow in that color use the text-shadow property, you can generate a text shadow directly with our [CSS Text Shadow Generator](#).

Here you see how black text with a 4 pixel rgb(180, 133, 131) colored shadow looks like.

```
.shadow{ text-shadow: 4px 4px 2px rgb(180, 133, 131) }
```

Border

The CSS property to change the border of an element to CIELCh 60, 19.525, 24.671 is called "border". The border property can be set on classes, ids or directly on the HTML element.

This example shows the color as border, it can be applied via the CSS property "border" or "border-color".

```
.border, #border, table{ border:4px solid rgb(180, 133, 131) }
```

If only the border color should be changed use the property `border-color`.

```
.border{ border-color:rgb(180, 133, 131) }
```

If you want to add a box shadow in that color use:

Here you see how a box with a 4 pixel `rgb(180, 133, 131)` colored shadow looks like.

```
.boxshadow{ -moz-box-shadow:4px 4px 4px  
4px rgb(180, 133, 131); -webkit-box-  
shadow:4px 4px 4px 4px rgb(180, 133, 131);  
box-shadow:4px 4px 4px 4px rgb(180, 133,  
131) }
```

Background

The CSS property to change the background color of an element to CIELCh 60, 19.525, 24.671 is called "background". The background property can be set on classes, ids or directly on the HTML element.

```
.background, #background, body{  
background: rgb(180, 133, 131) }
```

If only the background color should be changed can be used:

```
.background{ background-color: rgb(180,  
133, 131) }
```

This example shows the color as background, it is applied via the CSS property "background".

To optimize and compress your CSS code, you can use our [online CSS compressor and optimizer](#) based on csstidy. If you want to create a linear or radial gradient as background or border, check our [CSS Gradient Generator](#).

Hey! You found this booklet interesting? Support Converting Colors with the new Membership Option!

The pro membership hides all ads, plus gives you double the colors in the color bucket, and more awesome pro features!

[Learn more, Memberships starting at \\$2.50/m!](#)

**Follow me
on Twitter!**

@ConvertingColor