

Converting Colors

CIELCh(60, 19.839, 23.002)

Have a look what the booklet for
CIELCh(60, 19.839, 23.002) contains.

CIELCh(60, 19.864, 23.065)	3
<i>Conversions</i>	4
<i>Details</i>	6
<i>Harmonies</i>	11
<i>Previews</i>	20
<i>Color Blindness Simulation</i>	23
<i>CSS Examples</i>	26

Color

CIELCh(60, 19.864, 23.065)

Conversions

Conversions Part 1

Format	Color
Hex	B58584
RGB	181, 133, 132
RGB Percent	71%, 52%, 52%
CMY	0.2916, 0.4797, 0.4836
CMYK	0.00, 0.27, 0.27, 0.29
HSL	1°, 25%, 61%
HSV	1°, 27%, 71%
XYZ	31.4585, 28.1233, 25.4832
YIQ	147.2380, 28.9290, 9.8650

Conversions

Conversions Part 2

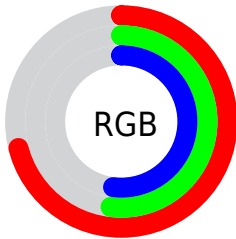
Format	Color
RYB	181, 133, 132
Decimal	11896196
CIELab	60.00, 18.28, 7.78
CIELCh	60, 19.864, 23.065
Yxy	28.1233, 0.3698, 0.3306
Android (android.graphics.Color)	4290086276 (0xFFB58584)
YUV	147.2380, -7.5123, 29.6093
Hunter-Lab	53.0314, 13.0820, 8.6313

Details

The CIELCh color **60, 19.864, 23.065** is a light color, and the websafe version is hex **CC9999**. A complement of this color would be **70, 16.538, 200.013**, and the grayscale version is **61, 0.008, 296.813**.

A 20% lighter version of the original color is **80, 20.096, 22.518**, and **40, 19.872, 22.326** is the 20% darker color. If you saturate the color by 10%, you get **55, 28.217, 24.243**, and if you desaturate by 10%, it is **65, 12.057, 22.168**.

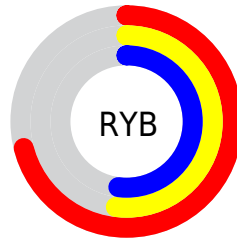
Distribution



Red (71%)

Green (52%)

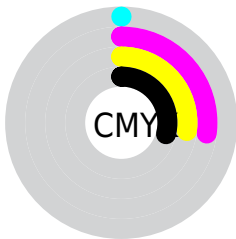
Blue (52%)



Red (71%)

Yellow (52%)

Blue (52%)

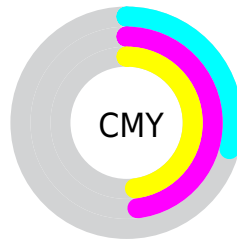


Cyan (0%)

Magenta (27%)

Yellow (27%)

Black (29%)



Cyan (29%)

Magenta (48%)

Yellow (48%)

Brightness & Saturation Gradients

These gradients show how the CIELCh color 60, 19.864, 23.065 changes by changing the brightness by 10 percent. The first figure shows a shift by +10% for each color and the second figure -10%.

Similar to the brightness gradients but the following saturation gradients show a change of the CIELCh color 60, 19.864, 23.065 by changing the saturation by 10% instead.

60, 19.864, 23.065

60, 19.864, 23.065

100, 19.864,
23.065

50, 19.864, 23.065

80, 19.864, 23.065

40, 19.864, 23.065

90, 19.864, 23.065

30, 19.864, 23.065

20, 19.864, 23.065

10, 19.864, 23.065

0, 19.864, 23.065

60, 19.864, 23.065

60, 19.864, 23.065

55, 28.217, 24.243

65, 12.057, 22.168

51, 37.049, 25.776

70, 4.816, 21.427

■ 47, 46.211, 27.768

■ 75, 1.881, 201.287

■ 44, 55.465, 30.299

■ 80, 8.076, 200.676

■ 41, 64.464, 33.348

■ 85, 13.817,
200.338

■ 39, 72.609, 36.612

■ 91, 19.156,
200.084

■ 38, 78.755, 39.351

■ 38, 80.427, 40.210

■ 95, 23.804,
197.950

Harmonies

Complementary

The Complementary color scheme is a pair of colors which are on the opposite of each other on the color wheel.



60, 19.864, 23.065



70, 16.538, 200.013

Rectangle

The Rectangle color scheme consists of four colors that form a rectangle on the color wheel.



60, 19.864, 23.065



60, 19.864, 73.065



60, 19.864, 203.065



60, 19.864, 253.065

Sweetspot

The Sweet Spot groups the original color and five complimentary colors.



60, 19.862, 23.071



88, 6.729, 21.502



61, 32.387, 326.354



46, 4.806, 21.609



96, 0.011, 296.813



49, 0.007, 296.813

Same Dimension

The Same Dimension uses a secret algorithm to generate beautiful new colors.



60, 19.862, 23.071



73, 30.633, 23.790



66, 17.137, 73.817



35, 3.832, 21.587



31, 70.649, 39.830



2, 9.011, 20.741

Inverse Universe

The Inverse Universe completely reimagines the original color for something new.



70, 16.538, 200.013



88, 24.278, 199.792



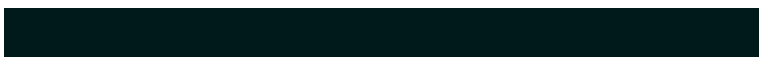
63, 16.050, 261.331



37, 3.614, 200.791



56, 33.270, 199.578



7, 8.854, 201.817

Previews

White Background



This preview shows how the CIELCh color 60, 19.864, 23.065 looks on a white background.

Color Contrast Check

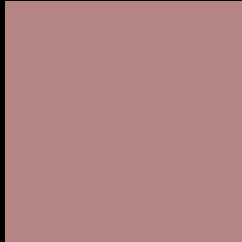
Large Text (above 18pt) WCAG AA ✓ Pass

Any Text WCAG AA ✗ Fail

Large Text (above 18pt) WCAG AAA ✗ Fail

Any Text WCAG AAA ✗ Fail

Black Background



This preview shows how the CIELCh color 60, 19.864, 23.065 looks on a black background.

Color Contrast Check

Large Text (above 18pt) WCAG AA ✓ Pass

Any Text WCAG AA ✓ Pass

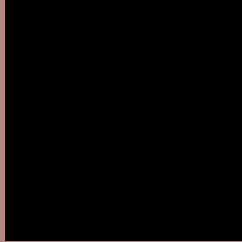
Large Text (above 18pt) WCAG AAA ✓ Pass

Any Text WCAG AAA × Fail

If you want to check with other color combinations, try the [Color Contrast Checker](#).

CIELCh 60, 19.864, 23.065

Background



This preview shows how black text looks on a background with the CIELCh color 60, 19.864, 23.065.



This preview shows how white text looks on a background with the CIELCh color 60, 19.864, 23.065.

Color Blindness Simulation

Color vision deficiency is a very complex topic, and I could not describe the different causes any better than Wikipedia does, so if you want to learn more, you should check out their [article about color blindness](#).

Dichromacy



Original Color

60, 19.864, 23.065

Protanopia

60, 3.901, 79.210

Deuteranopia

60, 11.401, 49.584



Tritanopia
60, 21.255, 6.566

Trichromacy



Original Color
60, 19.864, 23.065

Protanomaly
60, 8.785, 34.939

Deuteranomaly
60, 14.054, 34.473

Tritanomaly
60, 20.576, 12.308

Monochromacy



Original Color
60, 19.864, 23.065

Achromatopsia
61, 0.008, 296.813

Achromatomaly
60, 6.792, 24.735

CSS Examples

Text

The CSS property to change the color of the text to CIELCh 60, 19.864, 23.065 is called "color". The color property can be set on classes, ids or directly on the HTML element.

This example shows how text in the color `rgb(181, 133, 132)` looks like.

```
.text, #text, p{  
    color:rgb(181, 133, 132)  
}
```

If you want to add a text shadow in that color use the text-shadow property, you can generate a text shadow directly with our [CSS Text Shadow Generator](#).

Here you see how black text with a 4 pixel rgb(181, 133, 132) colored shadow looks like.

```
.shadow{ text-shadow: 4px 4px 2px rgb(181, 133, 132) }
```

Border

The CSS property to change the border of an element to CIELCh 60, 19.864, 23.065 is called "border". The border property can be set on classes, ids or directly on the HTML element.

This example shows the color as border, it can be applied via the CSS property "border" or "border-color".

```
.border, #border, table{ border:4px solid rgb(181, 133, 132) }
```

If only the border color should be changed use the property `border-color`.

```
.border{ border-color:rgb(181, 133, 132) }
```

If you want to add a box shadow in that color use:

Here you see how a box with a 4 pixel `rgb(181, 133, 132)` colored shadow looks like.

```
.boxshadow{ -moz-box-shadow:4px 4px 4px 4px rgb(181, 133, 132); -webkit-box-shadow:4px 4px 4px 4px rgb(181, 133, 132); box-shadow:4px 4px 4px 4px rgb(181, 133, 132) }
```

Background

The CSS property to change the background color of an element to CIELCh 60, 19.864, 23.065 is called "background". The background property can be set on classes, ids or directly on the HTML element.

```
.background, #background, body{  
background: rgb(181, 133, 132) }
```

If only the background color should be changed can be used:

```
.background{ background-color: rgb(181,  
133, 132) }
```

This example shows the color as background, it is applied via the CSS property "background".

To optimize and compress your CSS code, you can use our [online CSS compressor and optimizer](#) based on csstidy. If you want to create a linear or radial gradient as background or border, check our [CSS Gradient Generator](#).

Hey! You found this booklet interesting? Support Converting Colors with the new Membership Option!

The pro membership hides all ads, plus gives you double the colors in the color bucket, and more awesome pro features!

[Learn more, Memberships starting at \\$2.50/m!](#)

**Follow me
on Twitter!**

@ConvertingColor