

Converting Colors

CIELCh(60, 21.142, 30.894)

Have a look what the booklet for
CIELCh(60, 21.142, 30.894) contains.

CIELCh(60, 21.040, 32.086)	3
<i>Conversions</i>	4
<i>Details</i>	6
<i>Harmonies</i>	11
<i>Previews</i>	20
<i>Color Blindness Simulation</i>	23
<i>CSS Examples</i>	26

Color

CIELCh(60, 21.040, 32.086)

Conversions

Conversions Part 1

Format	Color
Hex	B6857E
RGB	182, 133, 126
RGB Percent	71%, 52%, 49%
CMY	0.2873, 0.4794, 0.5068
CMYK	0.00, 0.27, 0.31, 0.29
HSL	8°, 28%, 60%
HSV	8°, 31%, 71%
XYZ	31.3359, 28.1233, 23.4355
YIQ	146.8530, 31.4510, 8.2110

Conversions

Conversions Part 2

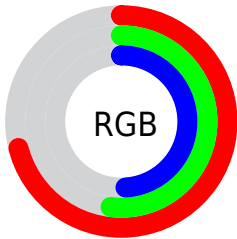
Format	Color
R_{YB}	182, 134, 126
Decimal	11961726
CIE _{Lab}	60.00, 17.83, 11.18
CIE _{LCh}	60, 21.040, 32.086
Yxy	28.1233, 0.3780, 0.3393
Android (android.graphics.Color)	4290151806 (0xFFB6857E)
YUV	146.8530, -10.2805, 30.8239
Hunter-Lab	53.0314, 12.6694, 10.9208

Details

The CIELCh color **60, 21.040, 32.086** is a dark color, and the websafe version is hex **CC9999**. A complement of this color would be **68, 16.926, 211.377**, and the grayscale version is **61, 0.008, 296.813**.

A 20% lighter version of the original color is **80, 21.103, 31.043**, and **40, 21.220, 31.991** is the 20% darker color. If you saturate the color by 10%, you get **56, 29.016, 32.787**, and if you desaturate by 10%, it is **64, 13.634, 31.613**.

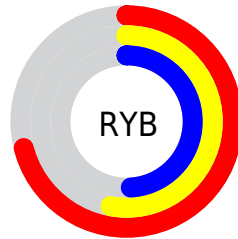
Distribution



Red (71%)

Green (52%)

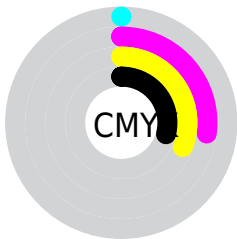
Blue (49%)



Red (71%)

Yellow (53%)

Blue (49%)

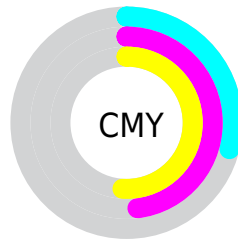


Cyan (0%)

Magenta (27%)

Yellow (31%)

Black (29%)



Cyan (29%)

Magenta (48%)

Yellow (51%)

Brightness & Saturation Gradients

These gradients show how the CIELCh color 60, 21.040, 32.086 changes by changing the brightness by 10 percent. The first figure shows a shift by +10% for each color and the second figure -10%.

Similar to the brightness gradients but the following saturation gradients show a change of the CIELCh color 60, 21.040, 32.086 by changing the saturation by 10% instead.

60, 21.040, 32.086

60, 21.040, 32.086

100, 21.040,
32.086

50, 21.040, 32.086

80, 21.040, 32.086

40, 21.040, 32.086

90, 21.040, 32.086

30, 21.040, 32.086

20, 21.040, 32.086

10, 21.040, 32.086

0, 21.040, 32.086

60, 21.040, 32.086

60, 21.040, 32.086

56, 29.016, 32.787

64, 13.634, 31.613

52, 37.537, 33.756

69, 6.793, 31.280

48, 46.508, 35.052

74, 0.483, 30.124

45, 55.737, 36.690

78, 5.343, 211.226

42, 64.846, 38.570

83, 10.734,
211.186

40, 73.025, 40.309

88, 15.739,
211.234

39, 79.024, 41.645

92, 20.406,
211.330

95, 23.493,
197.969

Harmonies

Complementary

The Complementary color scheme is a pair of colors which are on the opposite of each other on the color wheel.



60, 21.040, 32.086



68, 16.926, 211.377

Rectangle

The Rectangle color scheme consists of four colors that form a rectangle on the color wheel.



60, 21.040, 32.086



60, 21.040, 82.086



60, 21.040, 212.086



60, 21.040, 262.086

Sweetspot

The Sweet Spot groups the original color and five complimentary colors.



60, 21.039, 32.092



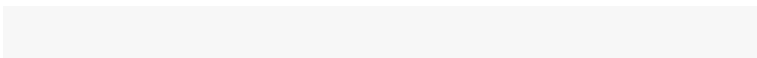
89, 6.980, 31.231



60, 34.508, 329.583



47, 4.919, 31.275



97, 0.011, 296.813



50, 0.007, 296.813

Same Dimension

The Same Dimension uses a secret algorithm to generate beautiful new colors.



60, 21.039, 32.092



73, 32.256, 32.539



67, 21.057, 82.929



36, 3.572, 31.237



33, 69.988, 41.643



3, 9.749, 27.745

Inverse Universe

The Inverse Universe completely reimagines the original color for something new.



68, 16.926, 211.377



86, 24.528, 211.585



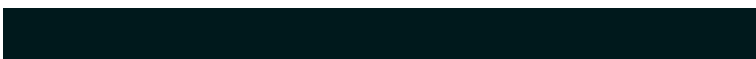
61, 20.493, 271.755



38, 3.365, 211.214



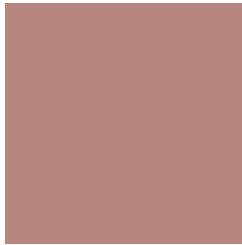
52, 30.402, 219.001



7, 8.904, 216.746

Previews

White Background



This preview shows how the CIELCh color 60, 21.040, 32.086 looks on a white background.

Color Contrast Check

Large Text (above 18pt) WCAG AA ✓ Pass

Any Text WCAG AA ✗ Fail

Large Text (above 18pt) WCAG AAA ✗ Fail

Any Text WCAG AAA ✗ Fail

Black Background



This preview shows how the CIE LCh color 60, 21.040, 32.086 looks on a black background.

Color Contrast Check

Large Text (above 18pt) WCAG AA ✓ Pass

Any Text WCAG AA ✓ Pass

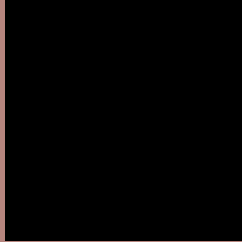
Large Text (above 18pt) WCAG AAA ✓ Pass

Any Text WCAG AAA × Fail

If you want to check with other color combinations, try the [Color Contrast Checker](#).

CIELCh 60, 21.040, 32.086

Background



This preview shows how black text looks on a background with the CIELCh color 60, 21.040, 32.086.



This preview shows how white text looks on a background with the CIELCh color 60, 21.040, 32.086.

Color Blindness Simulation

Color vision deficiency is a very complex topic, and I could not describe the different causes any better than Wikipedia does, so if you want to learn more, you should check out their [article about color blindness](#).

Dichromacy



Original Color

60, 21.040, 32.086

Protanopia

60, 7.307, 86.639

Deuteranopia

60, 13.820, 54.759



Tritanopia
60, 21.652, 6.907

Trichromacy



Original Color
60, 21.040, 32.086

Protanomaly
60, 10.675, 51.754

Deuteranomaly
60, 16.242, 45.013

Tritanomaly
60, 20.971, 17.096

Monochromacy



Original Color
60, 21.040, 32.086

Achromatopsia
61, 0.008, 296.813

Achromatomaly
61, 7.407, 33.136

CSS Examples

Text

The CSS property to change the color of the text to CIELCh 60, 21.040, 32.086 is called "color". The color property can be set on classes, ids or directly on the HTML element.

This example shows how text in the color `rgb(182, 133, 126)` looks like.

```
.text, #text, p{  
    color:rgb(182, 133, 126)  
}
```

If you want to add a text shadow in that color use the text-shadow property, you can generate a text shadow directly with our [CSS Text Shadow Generator](#).

Here you see how black text with a 4 pixel rgb(182, 133, 126) colored shadow looks like.

```
.shadow{ text-shadow: 4px 4px 2px rgb(182, 133, 126) }
```

Border

The CSS property to change the border of an element to CIELCh 60, 21.040, 32.086 is called "border". The border property can be set on classes, ids or directly on the HTML element.

This example shows the color as border, it can be applied via the CSS property "border" or "border-color".

```
.border, #border, table{ border:4px solid rgb(182, 133, 126) }
```

If only the border color should be changed use the property `border-color`.

```
.border{ border-color:rgb(182, 133, 126) }
```

If you want to add a box shadow in that color use:

Here you see how a box with a 4 pixel `rgb(182, 133, 126)` colored shadow looks like.

```
.boxshadow{ -moz-box-shadow:4px 4px 4px  
4px rgb(182, 133, 126); -webkit-box-  
shadow:4px 4px 4px 4px rgb(182, 133, 126);  
box-shadow:4px 4px 4px 4px rgb(182, 133,  
126) }
```

Background

The CSS property to change the background color of an element to CIELCh 60, 21.040, 32.086 is called "background". The background property can be set on classes, ids or directly on the HTML element.

```
.background, #background, body{  
background: rgb(182, 133, 126) }
```

If only the background color should be changed can be used:

```
.background{ background-color: rgb(182,  
133, 126) }
```

This example shows the color as background, it is applied via the CSS property "background".

To optimize and compress your CSS code, you can use our [online CSS compressor and optimizer](#) based on csstidy. If you want to create a linear or radial gradient as background or border, check our [CSS Gradient Generator](#).

Hey! You found this booklet interesting? Support Converting Colors with the new Membership Option!

The pro membership hides all ads, plus gives you double the colors in the color bucket, and more awesome pro features!

[Learn more, Memberships starting at \\$2.50/m!](#)

**Follow me
on Twitter!**

@ConvertingColor