

Converting Colors

CIELCh(60, 21.434, 14.294)

Have a look what the booklet for
CIELCh(60, 21.434, 14.294) contains.

CIELCh(60, 21.410, 14.278)	3
<i>Conversions</i>	4
<i>Details</i>	6
<i>Harmonies</i>	11
<i>Previews</i>	20
<i>Color Blindness Simulation</i>	23
<i>CSS Examples</i>	26

Color

CIELCh(60, 21.410, 14.278)

Conversions

Conversions Part 1

Format	Color
Hex	B78388
RGB	183, 131, 136
RGB Percent	72%, 51%, 53%
CMY	0.2819, 0.4858, 0.4662
CMYK	0.00, 0.28, 0.26, 0.28
HSL	354°, 27%, 62%
HSV	354°, 28%, 72%
XYZ	32.1380, 28.1233, 27.0668
YIQ	147.1180, 29.3870, 12.5790

Conversions

Conversions Part 2

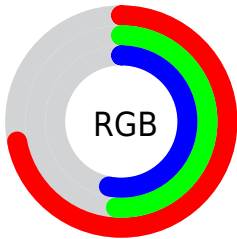
Format	Color
RYB	183, 131, 136
Decimal	12026760
CIELab	60.00, 20.75, 5.28
CIELCh	60, 21.410, 14.278
Yxy	28.1233, 0.3680, 0.3220
Android (android.graphics.Color)	4290216840 (0xFFB78388)
YUV	147.1180, -5.4812, 31.4685
Hunter-Lab	53.0314, 15.3693, 6.8608

Details

The CIELCh color **60, 21.410, 14.278** is a light color, and the websafe version is hex **CC9999**. A complement of this color would be **71, 18.329, 189.330**, and the grayscale version is **61, 0.008, 296.813**.

A 20% lighter version of the original color is **80, 21.598, 14.221**, and **40, 21.529, 14.784** is the 20% darker color. If you saturate the color by 10%, you get **55, 29.761, 15.771**, and if you desaturate by 10%, it is **65, 13.447, 13.082**.

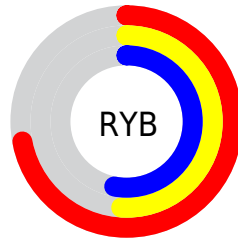
Distribution



Red (72%)

Green (51%)

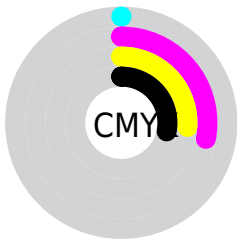
Blue (53%)



Red (72%)

Yellow (51%)

Blue (53%)

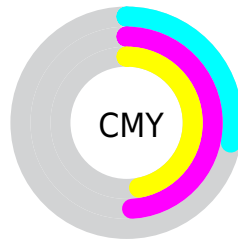


Cyan (0%)

Magenta (28%)

Yellow (26%)

Black (28%)



Cyan (28%)

Magenta (49%)

Yellow (47%)

Brightness & Saturation Gradients

These gradients show how the CIELCh color 60, 21.410, 14.278 changes by changing the brightness by 10 percent. The first figure shows a shift by +10% for each color and the second figure -10%.

Similar to the brightness gradients but the following saturation gradients show a change of the CIELCh color 60, 21.410, 14.278 by changing the saturation by 10% instead.

60, 21.410, 14.278

60, 21.410, 14.278

100, 21.410,
14.278

50, 21.410, 14.278

80, 21.410, 14.278

40, 21.410, 14.278

90, 21.410, 14.278

30, 21.410, 14.278

20, 21.410, 14.278

10, 21.410, 14.278

0, 21.410, 14.278

60, 21.410, 14.278

60, 21.410, 14.278

55, 29.761, 15.771

65, 13.447, 13.082

51, 38.375, 17.648

70, 5.942, 12.068

47, 47.038, 20.036

75, 1.092, 191.814

44, 55.474, 23.060

81, 7.671, 190.748

41, 63.393, 26.794

86, 13.827,
190.146

39, 70.530, 31.129

91, 19.598,
189.641

38, 76.593, 35.453

38, 77.486, 36.014

95, 23.337,
194.124

96, 23.100,
197.993

Harmonies

Complementary

The Complementary color scheme is a pair of colors which are on the opposite of each other on the color wheel.



60, 21.410, 14.278



71, 18.329, 189.330

Rectangle

The Rectangle color scheme consists of four colors that form a rectangle on the color wheel.



60, 21.410, 14.278



60, 21.410, 64.278



60, 21.410, 194.278



60, 21.410, 244.278

Sweetspot

The Sweet Spot groups the original color and five complimentary colors.



60, 21.408, 14.283



88, 7.875, 12.141



61, 33.773, 323.069



46, 5.543, 12.283



97, 0.011, 296.813



50, 0.007, 296.813

Same Dimension

The Same Dimension uses a secret algorithm to generate beautiful new colors.



60, 21.408, 14.283



73, 32.184, 15.159



65, 17.479, 61.056



36, 4.029, 12.160



32, 68.226, 35.432



2, 10.708, 13.580

Inverse Universe

The Inverse Universe completely reimagines the original color for something new.



60, 21.408, 14.283



73, 32.184, 15.159



65, 15.406, 247.715



36, 4.029, 12.160



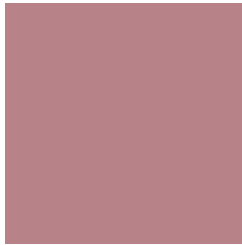
32, 68.226, 35.432



2, 10.708, 13.580

Previews

White Background



This preview shows how the CIELCh color 60, 21.410, 14.278 looks on a white background.

Color Contrast Check

Large Text (above 18pt) WCAG AA ✓ Pass

Any Text WCAG AA ✗ Fail

Large Text (above 18pt) WCAG AAA ✗ Fail

Any Text WCAG AAA ✗ Fail

Black Background



This preview shows how the CIE LCh color 60, 21.410, 14.278 looks on a black background.

Color Contrast Check

Large Text (above 18pt) WCAG AA ✓ Pass

Any Text WCAG AA ✓ Pass

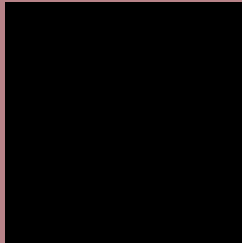
Large Text (above 18pt) WCAG AAA ✓ Pass

Any Text WCAG AAA × Fail

If you want to check with other color combinations, try the [Color Contrast Checker](#).

CIELCh 60, 21.410, 14.278

Background



This preview shows how black text looks on a background with the CIELCh color 60, 21.410, 14.278.



This preview shows how white text looks on a background with the CIELCh color 60, 21.410, 14.278.

Color Blindness Simulation

Color vision deficiency is a very complex topic, and I could not describe the different causes any better than Wikipedia does, so if you want to learn more, you should check out their [article about color blindness](#).

Dichromacy



Original Color

60, 21.410, 14.278

Protanopia

60, 1.656, 39.147

Deuteranopia

60, 9.965, 39.913



Tritanopia
60, 22.477, 7.578

Trichromacy



Original Color
60, 21.410, 14.278

Protanomaly
60, 8.814, 16.611

Deuteranomaly
60, 13.522, 25.466

Tritanomaly
60, 22.406, 8.985

Monochromacy



Original Color
60, 21.410, 14.278

Achromatopsia
61, 0.008, 296.813

Achromatomaly
60, 7.620, 11.666

CSS Examples

Text

The CSS property to change the color of the text to CIELCh 60, 21.410, 14.278 is called "color". The color property can be set on classes, ids or directly on the HTML element.

This example shows how text in the color `rgb(183, 131, 136)` looks like.

```
.text, #text, p{  
    color:rgb(183, 131, 136)  
}
```

If you want to add a text shadow in that color use the text-shadow property, you can generate a text shadow directly with our [CSS Text Shadow Generator](#).

Here you see how black text with a 4 pixel rgb(183, 131, 136) colored shadow looks like.

```
.shadow{ text-shadow: 4px 4px 2px rgb(183, 131, 136) }
```

Border

The CSS property to change the border of an element to CIELCh 60, 21.410, 14.278 is called "border". The border property can be set on classes, ids or directly on the HTML element.

This example shows the color as border, it can be applied via the CSS property "border" or "border-color".

```
.border, #border, table{ border:4px solid rgb(183, 131, 136) }
```

If only the border color should be changed use the property `border-color`.

```
.border{ border-color:rgb(183, 131, 136) }
```

If you want to add a box shadow in that color use:

Here you see how a box with a 4 pixel `rgb(183, 131, 136)` colored shadow looks like.

```
.boxshadow{ -moz-box-shadow:4px 4px 4px  
4px rgb(183, 131, 136); -webkit-box-  
shadow:4px 4px 4px 4px rgb(183, 131, 136);  
box-shadow:4px 4px 4px 4px rgb(183, 131,  
136) }
```

Background

The CSS property to change the background color of an element to CIELCh 60, 21.410, 14.278 is called "background". The background property can be set on classes, ids or directly on the HTML element.

```
.background, #background, body{  
background: rgb(183, 131, 136) }
```

If only the background color should be changed can be used:

```
.background{ background-color: rgb(183,  
131, 136) }
```

This example shows the color as background, it is applied via the CSS property "background".

To optimize and compress your CSS code, you can use our [online CSS compressor and optimizer](#) based on csstidy. If you want to create a linear or radial gradient as background or border, check our [CSS Gradient Generator](#).

Hey! You found this booklet interesting? Support Converting Colors with the new Membership Option!

The pro membership hides all ads, plus gives you double the colors in the color bucket, and more awesome pro features!

[Learn more, Memberships starting at \\$2.50/m!](#)

**Follow me
on Twitter!**

@ConvertingColor