

Converting Colors

CIELCh(60, 21.444, 36.295)

Have a look what the booklet for
CIELCh(60, 21.444, 36.295) contains.

CIELCh(60, 21.612, 36.286)	3
<i>Conversions</i>	4
<i>Details</i>	6
<i>Harmonies</i>	11
<i>Previews</i>	20
<i>Color Blindness Simulation</i>	23
<i>CSS Examples</i>	26

Color

CIELCh(60, 21.612, 36.286)

Conversions

Conversions Part 1

Format	Color
Hex	B6857B
RGB	182, 133, 123
RGB Percent	71%, 52%, 48%
CMY	0.2865, 0.4787, 0.5179
CMYK	0.00, 0.27, 0.32, 0.29
HSL	10°, 29%, 60%
HSV	10°, 32%, 71%
XYZ	31.2257, 28.1233, 22.5014
YIQ	146.5110, 32.4140, 7.2780

Conversions

Conversions Part 2

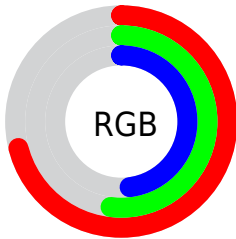
Format	Color
RYB	182, 135, 123
Decimal	11961723
CIELab	60.00, 17.42, 12.79
CIElCh	60, 21.612, 36.286
Yxy	28.1233, 0.3815, 0.3436
Android (android.graphics.Color)	4290151803 (0xFFB6857B)
YUV	146.5110, -11.5909, 31.1239
Hunter-Lab	53.0314, 12.2985, 11.9651

Details

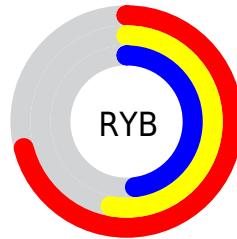
The CIELCh color $60, 21.612, 36.286$ is a dark color, and the websafe version is hex `CC9999`. A complement of this color would be $67, 17.200, 217.014$, and the grayscale version is $61, 0.008, 296.813$.

A 20% lighter version of the original color is $80, 21.769, 36.365$, and $40, 21.890, 36.404$ is the 20% darker color. If you saturate the color by 10%, you get $56, 29.457, 36.743$, and if you desaturate by 10%, it is $64, 14.338, 36.031$.

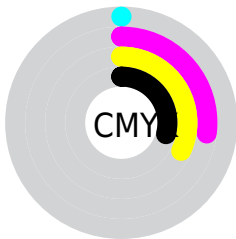
Distribution



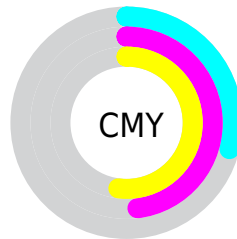
- Red (71%)
- Green (52%)
- Blue (48%)



- Red (71%)
- Yellow (53%)
- Blue (48%)



- Cyan (0%)
- Magenta (27%)
- Yellow (32%)
- Black (29%)



- Cyan (29%)
- Magenta (48%)
- Yellow (52%)


Brightness & Saturation Gradients

These gradients show how the CIELCh color 60, 21.612, 36.286 changes by changing the brightness by 10 percent. The first figure shows a shift by +10% for each color and the second figure -10%.

Similar to the brightness gradients but the following saturation gradients show a change of the CIELCh color 60, 21.612, 36.286 by changing the saturation by 10% instead.

 60, 21.612, 36.286

 60, 21.612, 36.286

 100, 21.612,
36.286

 50, 21.612, 36.286

 80, 21.612, 36.286

 40, 21.612, 36.286

 90, 21.612, 36.286

 30, 21.612, 36.286

 20, 21.612, 36.286

 10, 21.612, 36.286

 0, 21.612, 36.286

 60, 21.612, 36.286

 60, 21.612, 36.286

 56, 29.457, 36.743

 64, 14.338, 36.031

 52, 37.856, 37.429

 69, 7.623, 35.903

■ 49, 46.727, 38.385

■ 73, 1.428, 35.633

■ 45, 55.879, 39.600

■ 77, 4.293, 216.220

■ 43, 64.903, 40.942

■ 82, 9.589, 216.328

■ 41, 72.895, 41.991

■ 86, 14.510,
216.531

■ 39, 77.920, 42.661

■ 91, 19.101,
216.776

■ 95, 23.042,
199.529

■ 95, 23.439,
197.972

Harmonies

Complementary

The Complementary color scheme is a pair of colors which are on the opposite of each other on the color wheel.



60, 21.612, 36.286



67, 17.200, 217.014

Rectangle

The Rectangle color scheme consists of four colors that form a rectangle on the color wheel.



60, 21.612, 36.286



60, 21.612, 86.286



60, 21.612, 216.286



60, 21.612, 266.286

Sweetspot

The Sweet Spot groups the original color and five complimentary colors.



60, 21.611, 36.292



88, 7.539, 35.883



59, 35.106, 331.385



47, 5.215, 35.896



97, 0.011, 296.813



50, 0.007, 296.813

Same Dimension

The Same Dimension uses a secret algorithm to generate beautiful new colors.



60, 21.611, 36.292



73, 33.213, 36.596



68, 23.136, 86.981



36, 3.457, 35.876



34, 68.992, 42.792



3, 9.489, 31.063

Inverse Universe

The Inverse Universe completely reimagines the original color for something new.



67, 17.200, 217.014



84, 24.891, 217.487



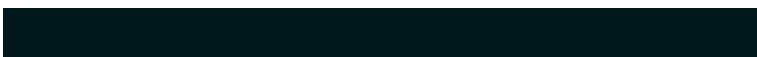
59, 22.977, 276.173



38, 3.260, 216.231



50, 30.101, 228.425



6, 8.634, 224.219

Previews

White Background



This preview shows how the CIELCh color 60, 21.612, 36.286 looks on a white background.

Color Contrast Check

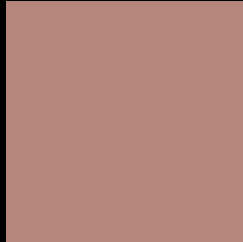
Large Text (above 18pt) WCAG AA ✓ Pass

Any Text WCAG AA × Fail

Large Text (above 18pt) WCAG AAA × Fail

Any Text WCAG AAA × Fail

Black Background



This preview shows how the CIE LCh color 60, 21.612, 36.286 looks on a black background.

Color Contrast Check

Large Text (above 18pt) WCAG AA ✓ Pass

Any Text WCAG AA ✓ Pass

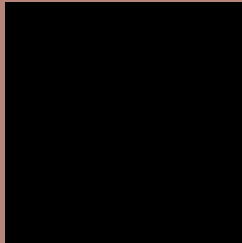
Large Text (above 18pt) WCAG AAA ✓ Pass

Any Text WCAG AAA × Fail

If you want to check with other color combinations, try the [Color Contrast Checker](#).

CIELCh 60, 21.612, 36.286

Background



This preview shows how black text looks on a background with the CIELCh color 60, 21.612, 36.286.



This preview shows how white text looks on a background with the CIELCh color 60, 21.612, 36.286.

Color Blindness Simulation

Color vision deficiency is a very complex topic, and I could not describe the different causes any better than Wikipedia does, so if you want to learn more, you should check out their [article about color blindness](#).

Dichromacy



Original Color

60, 21.612, 36.286

Protanopia

60, 8.895, 90.534

Deuteranopia

60, 15.269, 58.707



Tritanopia
60, 22.477, 7.578

Trichromacy



Original Color
60, 21.612, 36.286

Protanomaly
60, 11.723, 58.444

Deuteranomaly
60, 17.140, 49.836

Tritanomaly
60, 21.421, 17.253

Monochromacy



Original Color
60, 21.612, 36.286

Achromatopsia
61, 0.008, 296.813

Achromatomaly
60, 7.417, 33.137

CSS Examples

Text

The CSS property to change the color of the text to CIELCh 60, 21.612, 36.286 is called "color". The color property can be set on classes, ids or directly on the HTML element.

This example shows how text in the color `rgb(182, 133, 123)` looks like.

```
.text, #text, p{  
    color:rgb(182, 133, 123)  
}
```

If you want to add a text shadow in that color use the text-shadow property, you can generate a text shadow directly with our [CSS Text Shadow Generator](#).

Here you see how black text with a 4 pixel rgb(182, 133, 123) colored shadow looks like.

```
.shadow{ text-shadow: 4px 4px 2px rgb(182, 133, 123) }
```

Border

The CSS property to change the border of an element to CIELCh 60, 21.612, 36.286 is called "border". The border property can be set on classes, ids or directly on the HTML element.

This example shows the color as border, it can be applied via the CSS property "border" or "border-color".

```
.border, #border, table{ border:4px solid rgb(182, 133, 123) }
```

If only the border color should be changed use the property `border-color`.

```
.border{ border-color:rgb(182, 133, 123) }
```

If you want to add a box shadow in that color use:

Here you see how a box with a 4 pixel `rgb(182, 133, 123)` colored shadow looks like.

```
.boxshadow{ -moz-box-shadow:4px 4px 4px  
4px rgb(182, 133, 123); -webkit-box-  
shadow:4px 4px 4px 4px rgb(182, 133, 123);  
box-shadow:4px 4px 4px 4px rgb(182, 133,  
123) }
```

Background

The CSS property to change the background color of an element to CIELCh 60, 21.612, 36.286 is called "background". The background property can be set on classes, ids or directly on the HTML element.

```
.background, #background, body{  
background: rgb(182, 133, 123) }
```

If only the background color should be changed can be used:

```
.background{ background-color: rgb(182,  
133, 123) }
```

This example shows the color as background, it is applied via the CSS property "background".

To optimize and compress your CSS code, you can use our [online CSS compressor and optimizer](#) based on csstidy. If you want to create a linear or radial gradient as background or border, check our [CSS Gradient Generator](#).

Hey! You found this booklet interesting? Support Converting Colors with the new Membership Option!

The pro membership hides all ads, plus gives you double the colors in the color bucket, and more awesome pro features!

[Learn more, Memberships starting at \\$2.50/m!](#)

**Follow me
on Twitter!**

@ConvertingColor