

Converting Colors

CIELCh(60, 21.856, 14.492)

Have a look what the booklet for
CIELCh(60, 21.856, 14.492) contains.

CIELCh(60, 21.825, 14.472)	3
<i>Conversions</i>	4
<i>Details</i>	6
<i>Harmonies</i>	11
<i>Previews</i>	20
<i>Color Blindness Simulation</i>	23
<i>CSS Examples</i>	26

Color

CIELCh(60, 21.825, 14.472)

Conversions

Conversions Part 1

Format	Color
Hex	B88388
RGB	184, 131, 136
RGB Percent	72%, 51%, 53%
CMY	0.2792, 0.4870, 0.4674
CMYK	0.00, 0.29, 0.26, 0.28
HSL	354°, 27%, 62%
HSV	354°, 29%, 72%
XYZ	32.2444, 28.1233, 26.9547
YIQ	147.4170, 29.9830, 12.7910

Conversions

Conversions Part 2

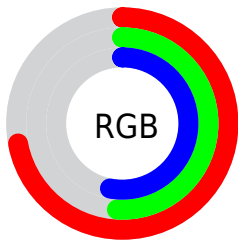
Format	Color
RYB	184, 131, 136
Decimal	12092296
CIELab	60.00, 21.13, 5.45
CIELCh	60, 21.825, 14.472
Yxy	28.1233, 0.3693, 0.3221
Android (android.graphics.Color)	4290282376 (0xFFB88388)
YUV	147.4170, -5.6286, 32.0833
Hunter-Lab	53.0314, 15.7273, 6.9862

Details

The CIELCh color **60, 21.825, 14.472** is a light color, and the websafe version is hex **CC9999**. A complement of this color would be **71, 18.622, 189.450**, and the grayscale version is **61, 0.008, 296.813**.

A 20% lighter version of the original color is **80, 21.987, 14.383**, and **40, 21.977, 15.026** is the 20% darker color. If you saturate the color by 10%, you get **55, 30.221, 15.978**, and if you desaturate by 10%, it is **65, 13.817, 13.267**.

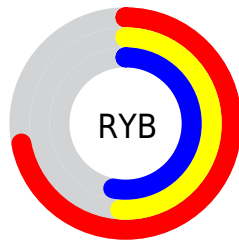
Distribution



Red (72%)

Green (51%)

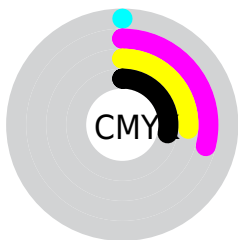
Blue (53%)



Red (72%)

Yellow (51%)

Blue (53%)

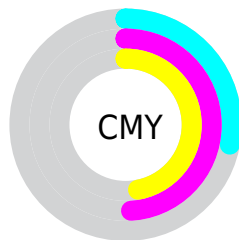


Cyan (0%)

Magenta (29%)

Yellow (26%)

Black (28%)



Cyan (28%)

Magenta (49%)

Yellow (47%)

Brightness & Saturation Gradients

These gradients show how the CIELCh color 60, 21.825, 14.472 changes by changing the brightness by 10 percent. The first figure shows a shift by +10% for each color and the second figure -10%.

Similar to the brightness gradients but the following saturation gradients show a change of the CIELCh color 60, 21.825, 14.472 by changing the saturation by 10% instead.

60, 21.825, 14.472

60, 21.825, 14.472

100, 21.825,
14.472

50, 21.825, 14.472

80, 21.825, 14.472

40, 21.825, 14.472

90, 21.825, 14.472

30, 21.825, 14.472

20, 21.825, 14.472

10, 21.825, 14.472

0, 21.825, 14.472

60, 21.825, 14.472

60, 21.825, 14.472

55, 30.221, 15.978

65, 13.817, 13.267

51, 38.876, 17.874

70, 6.270, 12.251

47, 47.573, 20.286

75, 0.804, 192.155

44, 56.034, 23.340

81, 7.419, 190.923

41, 63.967, 27.102

86, 13.607,
190.319

39, 71.103, 31.447

91, 19.406,
189.813

38, 77.143, 35.711

38, 77.795, 36.114

95, 23.102,
194.587

96, 22.902,
198.006

Harmonies

Complementary

The Complementary color scheme is a pair of colors which are on the opposite of each other on the color wheel.



60, 21.825, 14.472



71, 18.622, 189.450

Rectangle

The Rectangle color scheme consists of four colors that form a rectangle on the color wheel.



60, 21.825, 14.472



60, 21.825, 64.472



60, 21.825, 194.472



60, 21.825, 244.472

Sweetspot

The Sweet Spot groups the original color and five complimentary colors.



60, 21.823, 14.477



89, 7.942, 12.283



61, 34.384, 323.089



46, 5.542, 12.424



97, 0.011, 296.813



50, 0.007, 296.813

Same Dimension

The Same Dimension uses a secret algorithm to generate beautiful new colors.



60, 21.823, 14.477



73, 33.516, 15.454



65, 17.820, 61.015



36, 4.028, 12.301



32, 68.298, 35.524



2, 10.706, 13.686

Inverse Universe

The Inverse Universe completely reimagines the original color for something new.



60, 21.823, 14.477



73, 33.516, 15.454



65, 15.673, 247.790



36, 4.028, 12.301



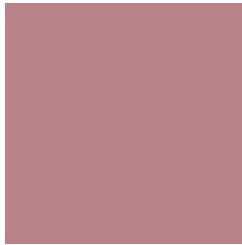
32, 68.298, 35.524



2, 10.706, 13.686

Previews

White Background



This preview shows how the CIELCh color 60, 21.825, 14.472 looks on a white background.

Color Contrast Check

Large Text (above 18pt) WCAG AA ✓ Pass

Any Text WCAG AA ✗ Fail

Large Text (above 18pt) WCAG AAA ✗ Fail

Any Text WCAG AAA ✗ Fail

Black Background



This preview shows how the CIELCh color 60, 21.825, 14.472 looks on a black background.

Color Contrast Check

Large Text (above 18pt) WCAG AA ✓ Pass

Any Text WCAG AA ✓ Pass

Large Text (above 18pt) WCAG AAA ✓ Pass

Any Text WCAG AAA × Fail

If you want to check with other color combinations, try the [Color Contrast Checker](#).

CIELCh 60, 21.825, 14.472

Background



This preview shows how black text looks on a background with the CIELCh color 60, 21.825, 14.472.



This preview shows how white text looks on a background with the CIELCh color 60, 21.825, 14.472.

Color Blindness Simulation

Color vision deficiency is a very complex topic, and I could not describe the different causes any better than Wikipedia does, so if you want to learn more, you should check out their [article about color blindness](#).

Dichromacy



Original Color

60, 21.825, 14.472

Protanopia

60, 1.656, 39.147

Deuteranopia

60, 9.965, 39.913



Tritanopia
60, 22.477, 7.578

Trichromacy



Original Color
60, 21.825, 14.472

Protanomaly
60, 8.814, 16.611

Deuteranomaly
60, 13.940, 25.365

Tritanomaly
60, 22.350, 10.401

Monochromacy



Original Color
60, 21.825, 14.472

Achromatopsia
61, 0.008, 296.813

Achromatomaly
60, 7.620, 11.666

CSS Examples

Text

The CSS property to change the color of the text to CIELCh 60, 21.825, 14.472 is called "color". The color property can be set on classes, ids or directly on the HTML element.

This example shows how text in the color `rgb(184, 131, 136)` looks like.

```
.text, #text, p{  
    color:rgb(184, 131, 136)  
}
```

If you want to add a text shadow in that color use the text-shadow property, you can generate a text shadow directly with our [CSS Text Shadow Generator](#).

Here you see how black text with a 4 pixel rgb(184, 131, 136) colored shadow looks like.

```
.shadow{ text-shadow: 4px 4px 2px rgb(184, 131, 136) }
```

Border

The CSS property to change the border of an element to CIELCh 60, 21.825, 14.472 is called "border". The border property can be set on classes, ids or directly on the HTML element.

This example shows the color as border, it can be applied via the CSS property "border" or "border-color".

```
.border, #border, table{ border:4px solid rgb(184, 131, 136) }
```

If only the border color should be changed use the property `border-color`.

```
.border{ border-color:rgb(184, 131, 136) }
```

If you want to add a box shadow in that color use:

Here you see how a box with a 4 pixel `rgb(184, 131, 136)` colored shadow looks like.

```
.boxshadow{ -moz-box-shadow:4px 4px 4px  
4px rgb(184, 131, 136); -webkit-box-  
shadow:4px 4px 4px 4px rgb(184, 131, 136);  
box-shadow:4px 4px 4px 4px rgb(184, 131,  
136) }
```

Background

The CSS property to change the background color of an element to CIELCh 60, 21.825, 14.472 is called "background". The background property can be set on classes, ids or directly on the HTML element.

```
.background, #background, body{  
background: rgb(184, 131, 136) }
```

If only the background color should be changed can be used:

```
.background{ background-color: rgb(184,  
131, 136) }
```

This example shows the color as background, it is applied via the CSS property "background".

To optimize and compress your CSS code, you can use our [online CSS compressor and optimizer](#) based on csstidy. If you want to create a linear or radial gradient as background or border, check our [CSS Gradient Generator](#).

Hey! You found this booklet interesting? Support Converting Colors with the new Membership Option!

The pro membership hides all ads, plus gives you double the colors in the color bucket, and more awesome pro features!

[Learn more, Memberships starting at \\$2.50/m!](#)

**Follow me
on Twitter!**

@ConvertingColor