

Converting Colors

CIELCh(60, 21.957, 11.731)

Have a look what the booklet for
CIELCh(60, 21.957, 11.731) contains.

CIELCh(60, 21.869, 11.560)	3
<i>Conversions</i>	4
<i>Details</i>	6
<i>Harmonies</i>	11
<i>Previews</i>	20
<i>Color Blindness Simulation</i>	23
<i>CSS Examples</i>	26

Color

CIELCh(60, 21.869, 11.560)

Conversions

Conversions Part 1

Format	Color
Hex	B8838A
RGB	184, 131, 138
RGB Percent	72%, 51%, 54%
CMY	0.2798, 0.4875, 0.4600
CMYK	0.00, 0.29, 0.25, 0.28
HSL	352°, 27%, 62%
HSV	352°, 29%, 72%
XYZ	32.3257, 28.1233, 27.6508
YIQ	147.6450, 29.3410, 13.4130

Conversions

Conversions Part 2

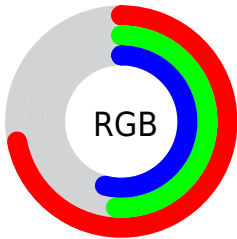
Format	Color
RYB	184, 131, 138
Decimal	12092298
CIELab	60.00, 21.43, 4.38
CIElCh	60, 21.869, 11.560
Yxy	28.1233, 0.3669, 0.3192
Android (android.graphics.Color)	4290282378 (0xFFB8838A)
YUV	147.6450, -4.7550, 31.8833
Hunter-Lab	53.0314, 16.0010, 6.2080

Details

The CIELCh color **60, 21.869, 11.560** is a light color, and the websafe version is hex **CC9999**. A complement of this color would be **71, 18.933, 186.187**, and the grayscale version is **61, 0.008, 296.813**.

A 20% lighter version of the original color is **80, 22.046, 11.654**, and **40, 21.982, 11.906** is the 20% darker color. If you saturate the color by 10%, you get **55, 30.180, 13.100**, and if you desaturate by 10%, it is **65, 13.889, 10.313**.

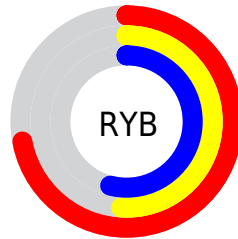
Distribution



Red (72%)

Green (51%)

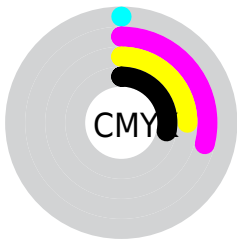
Blue (54%)



Red (72%)

Yellow (51%)

Blue (54%)

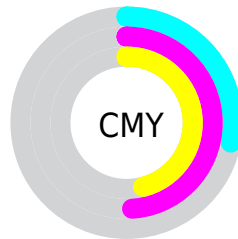


Cyan (0%)

Magenta (29%)

Yellow (25%)

Black (28%)



Cyan (28%)

Magenta (49%)

Yellow (46%)

Brightness & Saturation Gradients

These gradients show how the CIELCh color 60, 21.869, 11.560 changes by changing the brightness by 10 percent. The first figure shows a shift by +10% for each color and the second figure -10%.

Similar to the brightness gradients but the following saturation gradients show a change of the CIELCh color 60, 21.869, 11.560 by changing the saturation by 10% instead.

60, 21.869, 11.560

60, 21.869, 11.560

100, 21.869,
11.560

50, 21.869, 11.560

80, 21.869, 11.560

40, 21.869, 11.560

90, 21.869, 11.560

30, 21.869, 11.560

20, 21.869, 11.560

10, 21.869, 11.560

0, 21.869, 11.560

60, 21.869, 11.560

60, 21.869, 11.560

55, 30.180, 13.100

65, 13.889, 10.313

51, 38.679, 15.022

70, 6.325, 9.250

47, 47.135, 17.455

75, 0.800, 189.094

44, 55.259, 20.533

81, 7.491, 187.813

41, 62.769, 24.357

86, 13.775,
187.155

39, 69.464, 28.874

91, 19.684,
186.595

38, 75.292, 33.568

38, 75.946, 34.039

95, 23.472,
190.708

96, 22.943,
198.003

Harmonies

Complementary

The Complementary color scheme is a pair of colors which are on the opposite of each other on the color wheel.



60, 21.869, 11.560



71, 18.933, 186.187

Rectangle

The Rectangle color scheme consists of four colors that form a rectangle on the color wheel.



60, 21.869, 11.560



60, 21.869, 61.560



60, 21.869, 191.560



60, 21.869, 241.560

Sweetspot

The Sweet Spot groups the original color and five complimentary colors.



60, 21.867, 11.564



89, 8.001, 9.281



61, 34.096, 322.097



46, 5.581, 9.429



97, 0.011, 296.813



50, 0.007, 296.813

Same Dimension

The Same Dimension uses a secret algorithm to generate beautiful new colors.



60, 21.867, 11.564



73, 33.513, 12.564



65, 17.780, 57.281



36, 4.058, 9.300



32, 66.695, 33.365



2, 10.762, 11.426

Inverse Universe

The Inverse Universe completely reimagines the original color for something new.



60, 21.867, 11.564



73, 33.513, 12.564



66, 15.393, 243.412



36, 4.058, 9.300



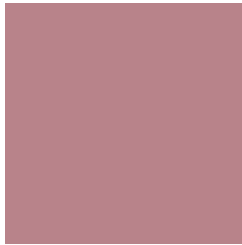
32, 66.695, 33.365



2, 10.762, 11.426

Previews

White Background



This preview shows how the CIELCh color 60, 21.869, 11.560 looks on a white background.

Color Contrast Check

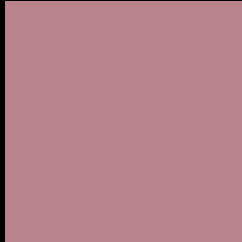
Large Text (above 18pt) WCAG AA ✓ Pass

Any Text WCAG AA ✗ Fail

Large Text (above 18pt) WCAG AAA ✗ Fail

Any Text WCAG AAA ✗ Fail

Black Background



This preview shows how the CIELCh color 60, 21.869, 11.560 looks on a black background.

Color Contrast Check

Large Text (above 18pt) WCAG AA ✓ Pass

Any Text WCAG AA ✓ Pass

Large Text (above 18pt) WCAG AAA ✓ Pass

Any Text WCAG AAA × Fail

If you want to check with other color combinations, try the [Color Contrast Checker](#).

CIELCh 60, 21.869, 11.560

Background



This preview shows how black text looks on a background with the CIELCh color 60, 21.869, 11.560.



This preview shows how white text looks on a background with the CIELCh color 60, 21.869, 11.560.

Color Blindness Simulation

Color vision deficiency is a very complex topic, and I could not describe the different causes any better than Wikipedia does, so if you want to learn more, you should check out their [article about color blindness](#).

Dichromacy



Original Color

60, 21.869, 11.560

Protanopia

60, 1.305, 353.588

Deuteranopia

60, 9.186, 34.316



Tritanopia
60, 22.477, 7.578

Trichromacy



Original Color
60, 21.869, 11.560

Protanomaly
60, 8.517, 8.832

Deuteranomaly
60, 13.395, 20.749

Tritanomaly
60, 22.406, 8.985

Monochromacy



Original Color
60, 21.869, 11.560

Achromatopsia
61, 0.008, 296.813

Achromatomaly
60, 7.706, 7.531

CSS Examples

Text

The CSS property to change the color of the text to CIELCh 60, 21.869, 11.560 is called "color". The color property can be set on classes, ids or directly on the HTML element.

This example shows how text in the color `rgb(184, 131, 138)` looks like.

```
.text, #text, p{  
    color:rgb(184, 131, 138)  
}
```

If you want to add a text shadow in that color use the text-shadow property, you can generate a text shadow directly with our [CSS Text Shadow Generator](#).

Here you see how black text with a 4 pixel rgb(184, 131, 138) colored shadow looks like.

```
.shadow{ text-shadow: 4px 4px 2px rgb(184, 131, 138) }
```

Border

The CSS property to change the border of an element to CIELCh 60, 21.869, 11.560 is called "border". The border property can be set on classes, ids or directly on the HTML element.

This example shows the color as border, it can be applied via the CSS property "border" or "border-color".

```
.border, #border, table{ border:4px solid rgb(184, 131, 138) }
```

If only the border color should be changed use the property `border-color`.

```
.border{ border-color:rgb(184, 131, 138) }
```

If you want to add a box shadow in that color use:

Here you see how a box with a 4 pixel `rgb(184, 131, 138)` colored shadow looks like.

```
.boxshadow{ -moz-box-shadow:4px 4px 4px  
4px rgb(184, 131, 138); -webkit-box-  
shadow:4px 4px 4px 4px rgb(184, 131, 138);  
box-shadow:4px 4px 4px 4px rgb(184, 131,  
138) }
```

Background

The CSS property to change the background color of an element to CIELCh 60, 21.869, 11.560 is called "background". The background property can be set on classes, ids or directly on the HTML element.

```
.background, #background, body{  
background: rgb(184, 131, 138) }
```

If only the background color should be changed can be used:

```
.background{ background-color: rgb(184,  
131, 138) }
```

This example shows the color as background, it is applied via the CSS property "background".

To optimize and compress your CSS code, you can use our [online CSS compressor and optimizer](#) based on csstidy. If you want to create a linear or radial gradient as background or border, check our [CSS Gradient Generator](#).

Hey! You found this booklet interesting? Support Converting Colors with the new Membership Option!

The pro membership hides all ads, plus gives you double the colors in the color bucket, and more awesome pro features!

[Learn more, Memberships starting at \\$2.50/m!](#)

**Follow me
on Twitter!**

@ConvertingColor