

Converting Colors

CIELCh(60, 22.663, 43.299)

Have a look what the booklet for
CIELCh(60, 22.663, 43.299) contains.

CIELCh(60, 22.823, 42.717)	3
<i>Conversions</i>	4
<i>Details</i>	6
<i>Harmonies</i>	11
<i>Previews</i>	20
<i>Color Blindness Simulation</i>	23
<i>CSS Examples</i>	26

Color

CIELCh(60, 22.823, 42.717)

Conversions

Conversions Part 1

Format	Color
Hex	B68576
RGB	182, 133, 118
RGB Percent	71%, 52%, 46%
CMY	0.2853, 0.4775, 0.5364
CMYK	0.00, 0.27, 0.35, 0.29
HSL	14°, 31%, 59%
HSV	14°, 35%, 71%
XYZ	31.0489, 28.1233, 20.9991
YIQ	145.9410, 34.0190, 5.7230

Conversions

Conversions Part 2

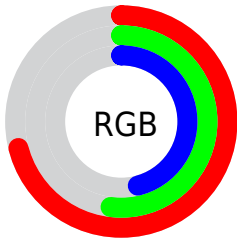
Format	Color
R_{YB}	182, 138, 118
Decimal	11961718
CIE Lab	60.00, 16.77, 15.48
CIE LCh	60, 22.823, 42.717
Yxy	28.1233, 0.3873, 0.3508
Android (android.graphics.Color)	4290151798 (0xFFB68576)
YUV	145.9410, -13.7749, 31.6237
Hunter-Lab	53.0314, 11.7033, 13.6447

Details

The CIELCh color `60, 22.823, 42.717` is a dark color, and the websafe version is hex `CC9999`. A complement of this color would be `66, 17.987, 225.993`, and the grayscale version is `61, 0.008, 296.813`.

A 20% lighter version of the original color is `80, 22.862, 42.486`, and `40, 22.535, 42.164` is the 20% darker color. If you saturate the color by 10%, you get `56, 30.532, 42.794`, and if you desaturate by 10%, it is `64, 15.671, 42.803`.

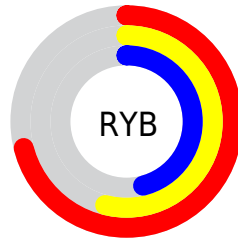
Distribution



Red (71%)

Green (52%)

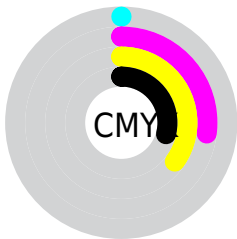
Blue (46%)



Red (71%)

Yellow (54%)

Blue (46%)

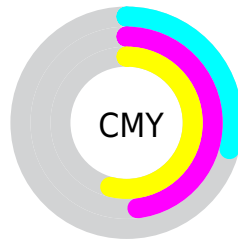


Cyan (0%)

Magenta (27%)

Yellow (35%)

Black (29%)



Cyan (29%)

Magenta (48%)

Yellow (54%)

Brightness & Saturation Gradients

These gradients show how the CIELCh color 60, 22.823, 42.717 changes by changing the brightness by 10 percent. The first figure shows a shift by +10% for each color and the second figure -10%.

Similar to the brightness gradients but the following saturation gradients show a change of the CIELCh color 60, 22.823, 42.717 by changing the saturation by 10% instead.

60, 22.823, 42.717

60, 22.823, 42.717

100, 22.823,
42.717

50, 22.823, 42.717

80, 22.823, 42.717

40, 22.823, 42.717

90, 22.823, 42.717

30, 22.823, 42.717

20, 22.823, 42.717

10, 22.823, 42.717

0, 22.823, 42.717

60, 22.823, 42.717

60, 22.823, 42.717

56, 30.532, 42.794

64, 15.671, 42.803

53, 38.785, 43.043

68, 9.061, 42.993

■ 49, 47.500, 43.478

■ 72, 2.952, 43.188

■ 46, 56.463, 44.052

■ 76, 2.702, 223.919

■ 44, 65.185, 44.576

■ 80, 7.949, 224.227

■ 42, 72.617, 44.582

■ 85, 12.836,
224.667

■ 41, 75.912, 44.688

■ 89, 17.407,
225.141

■ 93, 20.558,
213.102

■ 95, 23.351,
197.978

Harmonies

Complementary

The Complementary color scheme is a pair of colors which are on the opposite of each other on the color wheel.



60, 22.823, 42.717



66, 17.987, 225.993

Rectangle

The Rectangle color scheme consists of four colors that form a rectangle on the color wheel.



60, 22.823, 42.717



60, 22.823, 92.717



60, 22.823, 222.717



60, 22.823, 272.717

Sweetspot

The Sweet Spot groups the original color and five complimentary colors.



60, 22.822, 42.723



88, 8.032, 43.084



58, 36.326, 334.068



47, 5.470, 43.053



97, 0.011, 296.813



50, 0.007, 296.813

Same Dimension

The Same Dimension uses a secret algorithm to generate beautiful new colors.



60, 22.822, 42.723



73, 34.854, 42.761



68, 26.632, 91.771



37, 3.335, 43.125



35, 67.191, 44.994



4, 9.171, 36.208

Inverse Universe

The Inverse Universe completely reimagines the original color for something new.



66, 17.987, 225.993



82, 25.836, 226.916



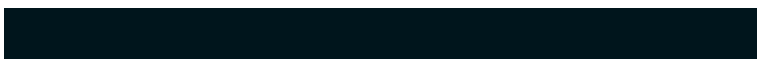
57, 27.170, 281.463



38, 3.156, 224.050



46, 31.042, 242.333



6, 8.516, 234.999

Previews

White Background



This preview shows how the CIELCh color 60, 22.823, 42.717 looks on a white background.

Color Contrast Check

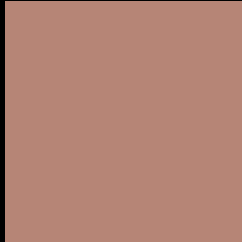
Large Text (above 18pt) WCAG AA ✓ Pass

Any Text WCAG AA ✗ Fail

Large Text (above 18pt) WCAG AAA ✗ Fail

Any Text WCAG AAA ✗ Fail

Black Background



This preview shows how the CIE LCh color 60, 22.823, 42.717 looks on a black background.

Color Contrast Check

Large Text (above 18pt) WCAG AA ✓ Pass

Any Text WCAG AA ✓ Pass

Large Text (above 18pt) WCAG AAA ✓ Pass

Any Text WCAG AAA × Fail

If you want to check with other color combinations, try the [Color Contrast Checker](#).

CIELCh 60, 22.823, 42.717

Background



This preview shows how black text looks on a background with the CIELCh color 60, 22.823, 42.717.



This preview shows how white text looks on a background with the CIELCh color 60, 22.823, 42.717.

Color Blindness Simulation

Color vision deficiency is a very complex topic, and I could not describe the different causes any better than Wikipedia does, so if you want to learn more, you should check out their [article about color blindness](#).

Dichromacy



Original Color

60, 22.823, 42.717

Protanopia

60, 12.131, 95.073

Deuteranopia

60, 17.616, 64.354



Tritanopia
60, 22.477, 7.578

Trichromacy



Original Color
60, 22.823, 42.717

Protanomaly
60, 14.178, 68.440

Deuteranomaly
60, 19.239, 55.957

Tritanomaly
60, 21.495, 20.216

Monochromacy



Original Color
60, 22.823, 42.717

Achromatopsia
61, 0.008, 296.813

Achromatomaly
60, 7.789, 41.101

CSS Examples

Text

The CSS property to change the color of the text to CIELCh 60, 22.823, 42.717 is called "color". The color property can be set on classes, ids or directly on the HTML element.

This example shows how text in the color `rgb(182, 133, 118)` looks like.

```
.text, #text, p{  
    color:rgb(182, 133, 118)  
}
```

If you want to add a text shadow in that color use the text-shadow property, you can generate a text shadow directly with our [CSS Text Shadow Generator](#).

Here you see how black text with a 4 pixel rgb(182, 133, 118) colored shadow looks like.

```
.shadow{ text-shadow: 4px 4px 2px rgb(182, 133, 118) }
```

Border

The CSS property to change the border of an element to CIELCh 60, 22.823, 42.717 is called "border". The border property can be set on classes, ids or directly on the HTML element.

This example shows the color as border, it can be applied via the CSS property "border" or "border-color".

```
.border, #border, table{ border:4px solid rgb(182, 133, 118) }
```

If only the border color should be changed use the property `border-color`.

```
.border{ border-color:rgb(182, 133, 118) }
```

If you want to add a box shadow in that color use:

Here you see how a box with a 4 pixel `rgb(182, 133, 118)` colored shadow looks like.

```
.boxshadow{ -moz-box-shadow:4px 4px 4px 4px rgb(182, 133, 118); -webkit-box-shadow:4px 4px 4px 4px rgb(182, 133, 118); box-shadow:4px 4px 4px 4px rgb(182, 133, 118) }
```

Background

The CSS property to change the background color of an element to CIELCh 60, 22.823, 42.717 is called "background". The background property can be set on classes, ids or directly on the HTML element.

```
.background, #background, body{  
background: rgb(182, 133, 118) }
```

If only the background color should be changed can be used:

```
.background{ background-color: rgb(182,  
133, 118) }
```

This example shows the color as background, it is applied via the CSS property "background".

To optimize and compress your CSS code, you can use our [online CSS compressor and optimizer](#) based on csstidy. If you want to create a linear or radial gradient as background or border, check our [CSS Gradient Generator](#).

Hey! You found this booklet interesting? Support Converting Colors with the new Membership Option!

The pro membership hides all ads, plus gives you double the colors in the color bucket, and more awesome pro features!

[Learn more, Memberships starting at \\$2.50/m!](#)

**Follow me
on Twitter!**

@ConvertingColor