

Converting Colors

CIELCh(60, 22.944, 45.495)

Have a look what the booklet for
CIELCh(60, 22.944, 45.495) contains.

CIELCh(60, 22.944, 45.495)	3
<i>Conversions</i>	4
<i>Details</i>	6
<i>Harmonies</i>	11
<i>Previews</i>	20
<i>Color Blindness Simulation</i>	23
<i>CSS Examples</i>	26

Color

CIELCh(60, 22.944, 45.495)

Conversions

Conversions Part 1

Format	Color
Hex	B68675
RGB	182, 134, 117
RGB Percent	71%, 53%, 46%
CMY	0.2878, 0.4759, 0.5426
CMYK	0.00, 0.26, 0.36, 0.29
HSL	16°, 31%, 58%
HSV	16°, 36%, 71%
XYZ	30.8639, 28.1233, 20.5226
YIQ	146.4140, 34.0650, 4.8890

Conversions

Conversions Part 2

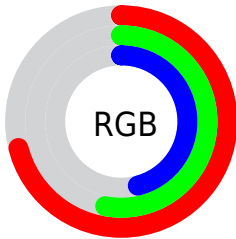
Format	Color
R_{YB}	182, 140, 117
Decimal	11961973
CIE _{Lab}	60.00, 16.08, 16.36
CIE _{LCh}	60, 22.944, 45.495
Yxy	28.1233, 0.3882, 0.3537
Android (android.graphics.Color)	4290152053 (0xFFB68675)
YUV	146.4140, -14.5011, 31.2089
Hunter-Lab	53.0314, 11.0806, 14.1774

Details

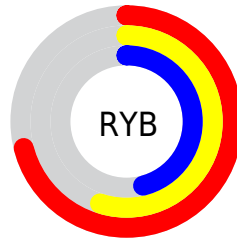
The CIELCh color $60, 22.944, 45.495$ is a dark color, and the websafe version is hex `CC9999`. A complement of this color would be $65, 18.148, 229.887$, and the grayscale version is $61, 0.008, 296.813$.

A 20% lighter version of the original color is $80, 22.968, 45.149$, and $40, 22.660, 45.113$ is the 20% darker color. If you saturate the color by 10%, you get $56, 30.553, 45.399$, and if you desaturate by 10%, it is $64, 15.878, 45.734$.

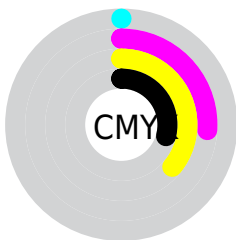
Distribution



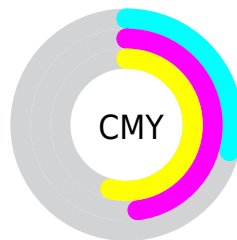
- Red (71%)
- Green (53%)
- Blue (46%)



- Red (71%)
- Yellow (55%)
- Blue (46%)



- Cyan (0%)
- Magenta (26%)
- Yellow (36%)
- Black (29%)



- Cyan (29%)
- Magenta (48%)
- Yellow (54%)

Brightness & Saturation Gradients

These gradients show how the CIELCh color 60, 22.944, 45.495 changes by changing the brightness by 10 percent. The first figure shows a shift by +10% for each color and the second figure -10%.

Similar to the brightness gradients but the following saturation gradients show a change of the CIELCh color 60, 22.944, 45.495 by changing the saturation by 10% instead.

60, 22.944, 45.495

60, 22.944, 45.495

100, 22.944,
45.495

50, 22.944, 45.495

80, 22.944, 45.495

40, 22.944, 45.495

90, 22.944, 45.495

30, 22.944, 45.495

20, 22.944, 45.495

10, 22.944, 45.495

0, 22.944, 45.495

60, 22.944, 45.495

60, 22.944, 45.495

56, 30.553, 45.399

64, 15.878, 45.734

53, 38.693, 45.451

68, 9.338, 46.064

50, 47.282, 45.655

72, 3.285, 46.403

47, 56.099, 45.952

76, 2.327, 227.257

44, 64.636, 46.143

80, 7.544, 227.651

42, 71.856, 45.778

84, 12.414,
228.192

41, 74.717, 45.753

88, 16.977,
228.762

92, 20.081,
219.731

95, 23.306,
198.834

Harmonies

Complementary

The Complementary color scheme is a pair of colors which are on the opposite of each other on the color wheel.



60, 22.944, 45.495



65, 18.148, 229.887

Rectangle

The Rectangle color scheme consists of four colors that form a rectangle on the color wheel.



60, 22.944, 45.495



60, 22.944, 95.495



60, 22.944, 225.495



60, 22.944, 275.495

Sweetspot

The Sweet Spot groups the original color and five complimentary colors.



60, 22.943, 45.501



88, 7.948, 46.232



57, 36.450, 334.784



47, 5.412, 46.183



97, 0.011, 296.813



50, 0.007, 296.813

Same Dimension

The Same Dimension uses a secret algorithm to generate beautiful new colors.



60, 22.943, 45.501



73, 35.370, 45.408



68, 27.450, 92.883



37, 3.301, 46.298



35, 66.333, 46.108



4, 9.060, 38.463

Inverse Universe

The Inverse Universe completely reimagines the original color for something new.



65, 18.148, 229.887



81, 26.285, 231.037



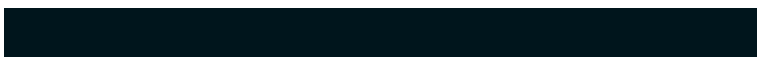
56, 28.191, 282.661



37, 3.130, 227.456



45, 31.927, 247.929



6, 8.554, 239.310

Previews

White Background



This preview shows how the CIELCh color 60, 22.944, 45.495 looks on a white background.

Color Contrast Check

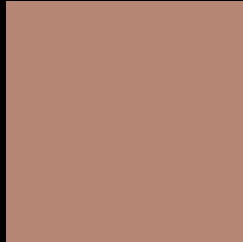
Large Text (above 18pt) WCAG AA ✓ Pass

Any Text WCAG AA ✗ Fail

Large Text (above 18pt) WCAG AAA ✗ Fail

Any Text WCAG AAA ✗ Fail

Black Background



This preview shows how the CIELCh color 60, 22.944, 45.495 looks on a black background.

Color Contrast Check

Large Text (above 18pt) WCAG AA ✓ Pass

Any Text WCAG AA ✓ Pass

Large Text (above 18pt) WCAG AAA ✓ Pass

Any Text WCAG AAA × Fail

If you want to check with other color combinations, try the [Color Contrast Checker](#).

CIELCh 60, 22.944, 45.495

Background



This preview shows how black text looks on a background with the CIELCh color 60, 22.944, 45.495.



This preview shows how white text looks on a background with the CIELCh color 60, 22.944, 45.495.

Color Blindness Simulation

Color vision deficiency is a very complex topic, and I could not describe the different causes any better than Wikipedia does, so if you want to learn more, you should check out their [article about color blindness](#).

Dichromacy



Original Color

60, 22.944, 45.495

Protanopia

60, 13.322, 94.292

Deuteranopia

60, 18.353, 64.529



Tritanopia
60, 22.477, 7.578

Trichromacy



Original Color
60, 22.944, 45.495

Protanomaly
60, 15.080, 70.978

Deuteranomaly
60, 19.968, 56.427

Tritanomaly
60, 21.495, 20.216

Monochromacy



Original Color
60, 22.944, 45.495

Achromatopsia
61, 0.008, 296.813

Achromatomaly
60, 7.926, 49.587

CSS Examples

Text

The CSS property to change the color of the text to CIELCh 60, 22.944, 45.495 is called "color". The color property can be set on classes, ids or directly on the HTML element.

This example shows how text in the color `rgb(182, 134, 117)` looks like.

```
.text, #text, p{  
    color:rgb(182, 134, 117)  
}
```

If you want to add a text shadow in that color use the text-shadow property, you can generate a text shadow directly with our [CSS Text Shadow Generator](#).

Here you see how black text with a 4 pixel rgb(182, 134, 117) colored shadow looks like.

```
.shadow{ text-shadow: 4px 4px 2px rgb(182, 134, 117) }
```

Border

The CSS property to change the border of an element to CIELCh 60, 22.944, 45.495 is called "border". The border property can be set on classes, ids or directly on the HTML element.

This example shows the color as border, it can be applied via the CSS property "border" or "border-color".

```
.border, #border, table{ border:4px solid rgb(182, 134, 117) }
```

If only the border color should be changed use the property `border-color`.

```
.border{ border-color:rgb(182, 134, 117) }
```

If you want to add a box shadow in that color use:

Here you see how a box with a 4 pixel `rgb(182, 134, 117)` colored shadow looks like.

```
.boxshadow{ -moz-box-shadow:4px 4px 4px  
4px rgb(182, 134, 117); -webkit-box-  
shadow:4px 4px 4px 4px rgb(182, 134, 117);  
box-shadow:4px 4px 4px 4px rgb(182, 134,  
117) }
```

Background

The CSS property to change the background color of an element to CIELCh 60, 22.944, 45.495 is called "background". The background property can be set on classes, ids or directly on the HTML element.

```
.background, #background, body{  
background: rgb(182, 134, 117) }
```

If only the background color should be changed can be used:

```
.background{ background-color: rgb(182,  
134, 117) }
```

This example shows the color as background, it is applied via the CSS property "background".

To optimize and compress your CSS code, you can use our [online CSS compressor and optimizer](#) based on csstidy. If you want to create a linear or radial gradient as background or border, check our [CSS Gradient Generator](#).

Hey! You found this booklet interesting? Support Converting Colors with the new Membership Option!

The pro membership hides all ads, plus gives you double the colors in the color bucket, and more awesome pro features!

[Learn more, Memberships starting at \\$2.50/m!](#)

**Follow me
on Twitter!**

@ConvertingColor