

Converting Colors

CIELCh(60, 23.919, 44.935)

Have a look what the booklet for
CIELCh(60, 23.919, 44.935) contains.

CIELCh(60, 23.793, 44.679)	3
<i>Conversions</i>	4
<i>Details</i>	6
<i>Harmonies</i>	11
<i>Previews</i>	20
<i>Color Blindness Simulation</i>	23
<i>CSS Examples</i>	26

Color

CIELCh(60, 23.793, 44.679)

Conversions

Conversions Part 1

Format	Color
Hex	B78574
RGB	183, 133, 116
RGB Percent	72%, 52%, 45%
CMY	0.2822, 0.4782, 0.5449
CMYK	0.00, 0.27, 0.37, 0.28
HSL	15°, 32%, 59%
HSV	15°, 37%, 72%
XYZ	31.0894, 28.1233, 20.3265
YIQ	146.0120, 35.2570, 5.3130

Conversions

Conversions Part 2

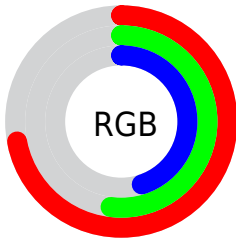
Format	Color
R_{YB}	183, 139, 116
Decimal	12027252
CIE _{Lab}	60.00, 16.92, 16.73
CIE _{LCh}	60, 23.793, 44.679
Yxy	28.1233, 0.3909, 0.3536
Android (android.graphics.Color)	4290217332 (0xFFB78574)
YUV	146.0120, -14.7959, 32.4385
Hunter-Lab	53.0314, 11.8397, 14.3966

Details

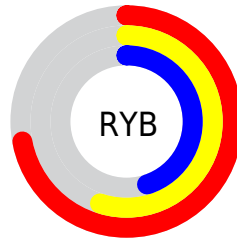
The CIELCh color $60, 23.793, 44.679$ is a dark color, and the websafe version is hex `CC9999`. A complement of this color would be $65, 18.646, 228.891$, and the grayscale version is $61, 0.008, 296.813$.

A 20% lighter version of the original color is $80, 23.748, 44.376$, and $40, 23.615, 44.280$ is the 20% darker color. If you saturate the color by 10%, you get $56, 31.530, 44.648$, and if you desaturate by 10%, it is $64, 16.607, 44.861$.

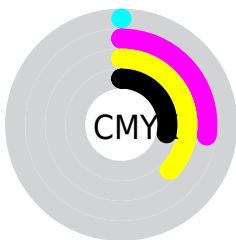
Distribution



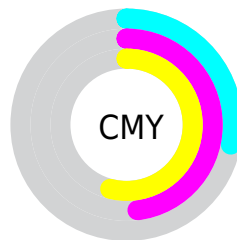
- Red (72%)
- Green (52%)
- Blue (45%)



- Red (72%)
- Yellow (55%)
- Blue (45%)



- Cyan (0%)
- Magenta (27%)
- Yellow (37%)
- Black (28%)



- Cyan (28%)
- Magenta (48%)
- Yellow (54%)


Brightness & Saturation Gradients

These gradients show how the CIELCh color 60, 23.793, 44.679 changes by changing the brightness by 10 percent. The first figure shows a shift by +10% for each color and the second figure -10%.

Similar to the brightness gradients but the following saturation gradients show a change of the CIELCh color 60, 23.793, 44.679 by changing the saturation by 10% instead.

 60, 23.793, 44.679

 60, 23.793, 44.679

 100, 23.793,
44.679

 50, 23.793, 44.679

 80, 23.793, 44.679

 40, 23.793, 44.679

 90, 23.793, 44.679

 30, 23.793, 44.679

 20, 23.793, 44.679

 10, 23.793, 44.679

 0, 23.793, 44.679

 60, 23.793, 44.679

 60, 23.793, 44.679

 56, 31.530, 44.648

 64, 16.607, 44.861

 53, 39.802, 44.774

 68, 9.958, 45.143

50, 48.515, 45.060

72, 3.807, 45.455

47, 57.428, 45.439

76, 1.890, 226.302

44, 65.991, 45.694

80, 7.182, 226.614

42, 73.145, 45.383

84, 12.116,
227.121

41, 75.466, 45.419

88, 16.735,
227.662

92, 19.889,
217.663

96, 23.119,
197.992

Harmonies

Complementary

The Complementary color scheme is a pair of colors which are on the opposite of each other on the color wheel.



60, 23.793, 44.679



65, 18.646, 228.891

Rectangle

The Rectangle color scheme consists of four colors that form a rectangle on the color wheel.



60, 23.793, 44.679



60, 23.793, 94.679



60, 23.793, 224.679



60, 23.793, 274.679

Sweetspot

The Sweet Spot groups the original color and five complimentary colors.



60, 23.792, 44.685



88, 7.969, 45.320



57, 37.519, 334.848



47, 5.427, 45.276



97, 0.011, 296.813



50, 0.007, 296.813

Same Dimension

The Same Dimension uses a secret algorithm to generate beautiful new colors.



60, 23.792, 44.685



73, 36.467, 44.643



69, 28.278, 92.774



37, 3.310, 45.379



35, 66.585, 45.776



4, 9.090, 37.809

Inverse Universe

The Inverse Universe completely reimagines the original color for something new.



65, 18.646, 228.891



80, 26.783, 230.047



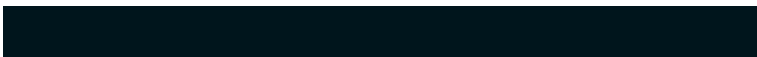
56, 29.069, 282.831



38, 3.136, 226.471



45, 31.644, 246.343



6, 8.538, 238.088

Previews

White Background



This preview shows how the CIELCh color 60, 23.793, 44.679 looks on a white background.

Color Contrast Check

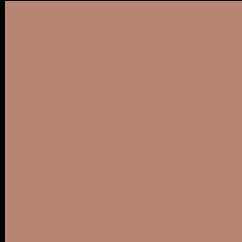
Large Text (above 18pt) WCAG AA ✓ Pass

Any Text WCAG AA ✗ Fail

Large Text (above 18pt) WCAG AAA ✗ Fail

Any Text WCAG AAA ✗ Fail

Black Background



This preview shows how the CIE LCh color 60, 23.793, 44.679 looks on a black background.

Color Contrast Check

Large Text (above 18pt) WCAG AA ✓ Pass

Any Text WCAG AA ✓ Pass

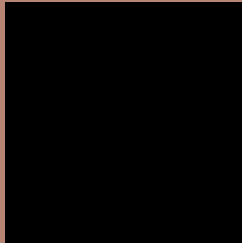
Large Text (above 18pt) WCAG AAA ✓ Pass

Any Text WCAG AAA × Fail

If you want to check with other color combinations, try the [Color Contrast Checker](#).

CIELCh 60, 23.793, 44.679

Background



This preview shows how black text looks on a background with the CIELCh color 60, 23.793, 44.679.



This preview shows how white text looks on a background with the CIELCh color 60, 23.793, 44.679.

Color Blindness Simulation

Color vision deficiency is a very complex topic, and I could not describe the different causes any better than Wikipedia does, so if you want to learn more, you should check out their [article about color blindness](#).

Dichromacy



Original Color

60, 23.793, 44.679

Protanopia

60, 13.322, 94.292

Deuteranopia

60, 18.782, 65.606



Tritanopia
60, 22.876, 7.889

Trichromacy



Original Color
60, 23.793, 44.679

Protanomaly
60, 15.354, 69.740

Deuteranomaly
60, 20.346, 57.572

Tritanomaly
60, 21.980, 21.733

Monochromacy



Original Color
60, 23.793, 44.679

Achromatopsia
61, 0.008, 296.813

Achromatomaly
60, 8.029, 44.764

CSS Examples

Text

The CSS property to change the color of the text to CIELCh 60, 23.793, 44.679 is called "color". The color property can be set on classes, ids or directly on the HTML element.

This example shows how text in the color `rgb(183, 133, 116)` looks like.

```
.text, #text, p{  
    color:rgb(183, 133, 116)  
}
```

If you want to add a text shadow in that color use the text-shadow property, you can generate a text shadow directly with our [CSS Text Shadow Generator](#).

Here you see how black text with a 4 pixel rgb(183, 133, 116) colored shadow looks like.

```
.shadow{ text-shadow: 4px 4px 2px rgb(183, 133, 116) }
```

Border

The CSS property to change the border of an element to CIELCh 60, 23.793, 44.679 is called "border". The border property can be set on classes, ids or directly on the HTML element.

This example shows the color as border, it can be applied via the CSS property "border" or "border-color".

```
.border, #border, table{ border:4px solid rgb(183, 133, 116) }
```

If only the border color should be changed use the property `border-color`.

```
.border{ border-color:rgb(183, 133, 116) }
```

If you want to add a box shadow in that color use:

Here you see how a box with a 4 pixel `rgb(183, 133, 116)` colored shadow looks like.

```
.boxshadow{ -moz-box-shadow:4px 4px 4px  
4px rgb(183, 133, 116); -webkit-box-  
shadow:4px 4px 4px 4px rgb(183, 133, 116);  
box-shadow:4px 4px 4px 4px rgb(183, 133,  
116) }
```

Background

The CSS property to change the background color of an element to CIELCh 60, 23.793, 44.679 is called "background". The background property can be set on classes, ids or directly on the HTML element.

```
.background, #background, body{  
background: rgb(183, 133, 116) }
```

If only the background color should be changed can be used:

```
.background{ background-color: rgb(183,  
133, 116) }
```

This example shows the color as background, it is applied via the CSS property "background".

To optimize and compress your CSS code, you can use our [online CSS compressor and optimizer](#) based on csstidy. If you want to create a linear or radial gradient as background or border, check our [CSS Gradient Generator](#).

Hey! You found this booklet interesting? Support Converting Colors with the new Membership Option!

The pro membership hides all ads, plus gives you double the colors in the color bucket, and more awesome pro features!

[Learn more, Memberships starting at \\$2.50/m!](#)

**Follow me
on Twitter!**

@ConvertingColor