

Converting Colors

CIELCh(60, 23.981, 38.863)

Have a look what the booklet for
CIELCh(60, 23.981, 38.863) contains.

CIELCh(60, 24.010, 39.020)	3
<i>Conversions</i>	4
<i>Details</i>	6
<i>Harmonies</i>	11
<i>Previews</i>	20
<i>Color Blindness Simulation</i>	23
<i>CSS Examples</i>	26

Color

CIELCh(60, 24.010, 39.020)

Conversions

Conversions Part 1

Format	Color
Hex	B98477
RGB	185, 132, 119
RGB Percent	73%, 52%, 47%
CMY	0.2748, 0.4826, 0.5336
CMYK	0.00, 0.29, 0.36, 0.27
HSL	12°, 32%, 60%
HSV	12°, 36%, 73%
XYZ	31.5617, 28.1233, 21.1994
YIQ	146.3650, 35.7610, 7.1930

Conversions

Conversions Part 2

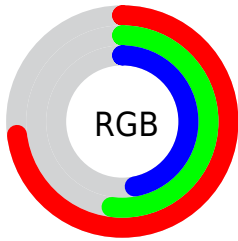
Format	Color
R_{YB}	185, 135, 119
Decimal	12158071
CIE Lab	60.00, 18.65, 15.12
CIE LCh	60, 24.010, 39.020
Yxy	28.1233, 0.3902, 0.3477
Android (android.graphics.Color)	4290348151 (0xFFB98477)
YUV	146.3650, -13.4909, 33.8829
Hunter-Lab	53.0314, 13.4295, 13.4208

Details

The CIELCh color **60, 24.010, 39.020** is a dark color, and the websafe version is hex **CC9999**. A complement of this color would be **67, 18.673, 220.895**, and the grayscale version is **61, 0.008, 296.813**.

A 20% lighter version of the original color is **80, 23.970, 38.932**, and **40, 23.851, 38.338** is the 20% darker color. If you saturate the color by 10%, you get **56, 32.016, 39.362**, and if you desaturate by 10%, it is **64, 16.579, 38.872**.

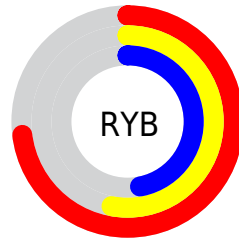
Distribution



Red (73%)

Green (52%)

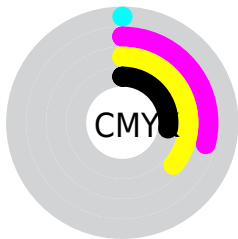
Blue (47%)



Red (73%)

Yellow (53%)

Blue (47%)

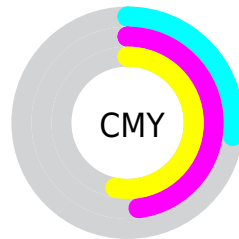


Cyan (0%)

Magenta (29%)

Yellow (36%)

Black (27%)



Cyan (27%)

Magenta (48%)

Yellow (53%)

Brightness & Saturation Gradients

These gradients show how the CIELCh color 60, 24.010, 39.020 changes by changing the brightness by 10 percent. The first figure shows a shift by +10% for each color and the second figure -10%.

Similar to the brightness gradients but the following saturation gradients show a change of the CIELCh color 60, 24.010, 39.020 by changing the saturation by 10% instead.

60, 24.010, 39.020

60, 24.010, 39.020

100, 24.010,
39.020

50, 24.010, 39.020

80, 24.010, 39.020

40, 24.010, 39.020

90, 24.010, 39.020

30, 24.010, 39.020

20, 24.010, 39.020

10, 24.010, 39.020

0, 24.010, 39.020

60, 24.010, 39.020

60, 24.010, 39.020

56, 32.016, 39.362

64, 16.579, 38.872

52, 40.573, 39.918

68, 9.714, 38.855

49, 49.579, 40.709

73, 3.380, 38.876

46, 58.796, 41.689

77, 2.471, 219.442

43, 67.690, 42.655

81, 7.888, 219.570

41, 75.134, 43.094

86, 12.920,
219.860

41, 78.055, 43.410

90, 17.614,
220.195

94, 21.236,
204.079

96, 22.577,
198.026

Harmonies

Complementary

The Complementary color scheme is a pair of colors which are on the opposite of each other on the color wheel.



60, 24.010, 39.020



67, 18.673, 220.895

Rectangle

The Rectangle color scheme consists of four colors that form a rectangle on the color wheel.



60, 24.010, 39.020



60, 24.010, 89.020



60, 24.010, 219.020



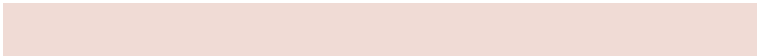
60, 24.010, 269.020

Sweetspot

The Sweet Spot groups the original color and five complimentary colors.



60, 24.009, 39.026



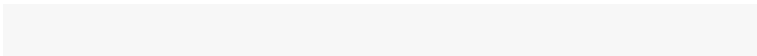
89, 8.258, 38.874



59, 38.627, 332.203



46, 5.576, 38.868



97, 0.011, 296.813



50, 0.007, 296.813

Same Dimension

The Same Dimension uses a secret algorithm to generate beautiful new colors.



60, 24.009, 39.026



72, 36.909, 39.279



68, 26.234, 87.885



37, 3.399, 38.882



34, 68.276, 43.647



3, 9.345, 33.198

Inverse Universe

The Inverse Universe completely reimagines the original color for something new.



67, 18.673, 220.895



83, 26.827, 221.665



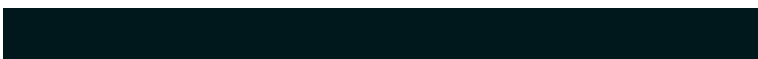
58, 26.241, 278.097



38, 3.209, 219.478



48, 30.296, 234.355



6, 8.546, 228.838

Previews

White Background



This preview shows how the CIELCh color 60, 24.010, 39.020 looks on a white background.

Color Contrast Check

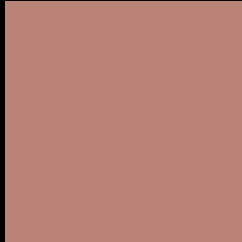
Large Text (above 18pt) WCAG AA ✓ Pass

Any Text WCAG AA ✗ Fail

Large Text (above 18pt) WCAG AAA ✗ Fail

Any Text WCAG AAA ✗ Fail

Black Background



This preview shows how the CIE LCh color 60, 24.010, 39.020 looks on a black background.

Color Contrast Check

Large Text (above 18pt) WCAG AA ✓ Pass

Any Text WCAG AA ✓ Pass

Large Text (above 18pt) WCAG AAA ✓ Pass

Any Text WCAG AAA × Fail

If you want to check with other color combinations, try the [Color Contrast Checker](#).

CIELCh 60, 24.010, 39.020

Background



This preview shows how black text looks on a background with the CIELCh color 60, 24.010, 39.020.



This preview shows how white text looks on a background with the CIELCh color 60, 24.010, 39.020.

Color Blindness Simulation

Color vision deficiency is a very complex topic, and I could not describe the different causes any better than Wikipedia does, so if you want to learn more, you should check out their [article about color blindness](#).

Dichromacy



Original Color

60, 24.010, 39.020

Protanopia

60, 11.586, 94.511

Deuteranopia

60, 17.197, 63.163



Tritanopia
60, 24.109, 8.792

Trichromacy



Original Color
60, 24.010, 39.020

Protanomaly
60, 13.942, 63.052

Deuteranomaly
60, 19.292, 52.032

Tritanomaly
60, 23.173, 19.166

Monochromacy



Original Color
60, 24.010, 39.020

Achromatopsia
61, 0.008, 296.813

Achromatomaly
60, 8.175, 40.093

CSS Examples

Text

The CSS property to change the color of the text to CIELCh 60, 24.010, 39.020 is called "color". The color property can be set on classes, ids or directly on the HTML element.

This example shows how text in the color `rgb(185, 132, 119)` looks like.

```
.text, #text, p{  
    color:rgb(185, 132, 119)  
}
```

If you want to add a text shadow in that color use the text-shadow property, you can generate a text shadow directly with our [CSS Text Shadow Generator](#).

Here you see how black text with a 4 pixel rgb(185, 132, 119) colored shadow looks like.

```
.shadow{ text-shadow: 4px 4px 2px rgb(185, 132, 119) }
```

Border

The CSS property to change the border of an element to CIELCh 60, 24.010, 39.020 is called "border". The border property can be set on classes, ids or directly on the HTML element.

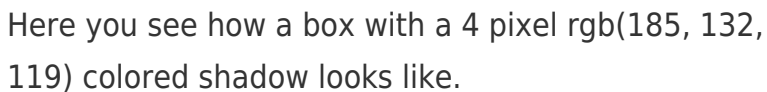
This example shows the color as border, it can be applied via the CSS property "border" or "border-color".

```
.border, #border, table{ border:4px solid rgb(185, 132, 119) }
```

If only the border color should be changed use the property `border-color`.

```
.border{ border-color:rgb(185, 132, 119) }
```

If you want to add a box shadow in that color use:



Here you see how a box with a 4 pixel `rgb(185, 132, 119)` colored shadow looks like.

```
.boxshadow{ -moz-box-shadow:4px 4px 4px  
4px rgb(185, 132, 119); -webkit-box-  
shadow:4px 4px 4px 4px rgb(185, 132, 119);  
box-shadow:4px 4px 4px 4px rgb(185, 132,  
119) }
```

Background

The CSS property to change the background color of an element to CIELCh 60, 24.010, 39.020 is called "background". The background property can be set on classes, ids or directly on the HTML element.

```
.background, #background, body{  
background: rgb(185, 132, 119) }
```

If only the background color should be changed can be used:

```
.background{ background-color: rgb(185,  
132, 119) }
```

This example shows the color as background, it is applied via the CSS property "background".

To optimize and compress your CSS code, you can use our [online CSS compressor and optimizer](#) based on csstidy. If you want to create a linear or radial gradient as background or border, check our [CSS Gradient Generator](#).

Hey! You found this booklet interesting? Support Converting Colors with the new Membership Option!

The pro membership hides all ads, plus gives you double the colors in the color bucket, and more awesome pro features!

[Learn more, Memberships starting at \\$2.50/m!](#)

**Follow me
on Twitter!**

@ConvertingColor