

Converting Colors

CIELCh(60, 25.260, 39.053)

Have a look what the booklet for
CIELCh(60, 25.260, 39.053) contains.

CIELCh(60, 25.313, 38.235)	3
<i>Conversions</i>	4
<i>Details</i>	6
<i>Harmonies</i>	11
<i>Previews</i>	20
<i>Color Blindness Simulation</i>	23
<i>CSS Examples</i>	26

Color

CIELCh(60, 25.313, 38.235)

Conversions

Conversions Part 1

Format	Color
Hex	BB8376
RGB	187, 131, 118
RGB Percent	73%, 51%, 46%
CMY	0.2665, 0.4861, 0.5371
CMYK	0.00, 0.30, 0.37, 0.27
HSL	11°, 34%, 60%
HSV	11°, 37%, 73%
XYZ	31.8990, 28.1233, 20.8993
YIQ	146.2620, 37.5490, 7.8290

Conversions

Conversions Part 2

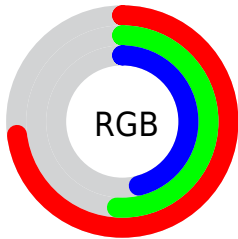
Format	Color
R _Y B	187, 134, 118
Decimal	12288886
CIE Lab	60.00, 19.88, 15.67
CIE LCh	60, 25.313, 38.235
Yxy	28.1233, 0.3942, 0.3475
Android (android.graphics.Color)	4290478966 (0xFFBB8376)
YUV	146.2620, -13.9332, 35.7272
Hunter-Lab	53.0314, 14.5646, 13.7562

Details

The CIELCh color **60, 25.313, 38.235** is a dark color, and the websafe version is hex **CC9999**. A complement of this color would be **68, 19.458, 219.835**, and the grayscale version is **61, 0.008, 296.813**.

A 20% lighter version of the original color is **80, 25.564, 37.912**, and **40, 25.300, 37.625** is the 20% darker color. If you saturate the color by 10%, you get **56, 33.506, 38.662**, and if you desaturate by 10%, it is **64, 17.701, 38.014**.

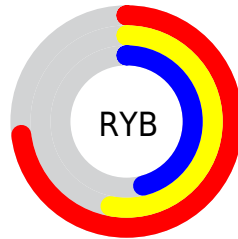
Distribution



Red (73%)

Green (51%)

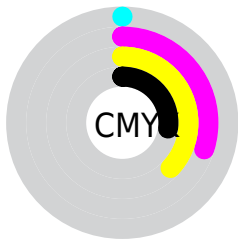
Blue (46%)



Red (73%)

Yellow (53%)

Blue (46%)

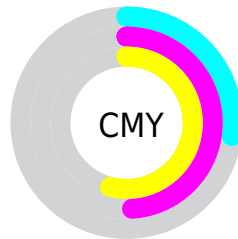


Cyan (0%)

Magenta (30%)

Yellow (37%)

Black (27%)



Cyan (27%)

Magenta (49%)

Yellow (54%)

Brightness & Saturation Gradients

These gradients show how the CIELCh color 60, 25.313, 38.235 changes by changing the brightness by 10 percent. The first figure shows a shift by +10% for each color and the second figure -10%.

Similar to the brightness gradients but the following saturation gradients show a change of the CIELCh color 60, 25.313, 38.235 by changing the saturation by 10% instead.

60, 25.313, 38.235

60, 25.313, 38.235

100, 25.313,
38.235

50, 25.313, 38.235

80, 25.313, 38.235

40, 25.313, 38.235

90, 25.313, 38.235

30, 25.313, 38.235

20, 25.313, 38.235

10, 25.313, 38.235

0, 25.313, 38.235

60, 25.313, 38.235

60, 25.313, 38.235

56, 33.506, 38.662

64, 17.701, 38.014

52, 42.246, 39.317

68, 10.667, 37.937

49, 51.414, 40.219

73, 4.177, 37.926

46, 60.740, 41.310

77, 1.814, 218.496

43, 69.624, 42.354

82, 7.356, 218.508

41, 76.895, 42.844

86, 12.500,
218.755

41, 79.012, 43.137

91, 17.293,
219.055

95, 21.143,
201.653

96, 21.965,
198.064

Harmonies

Complementary

The Complementary color scheme is a pair of colors which are on the opposite of each other on the color wheel.



60, 25.313, 38.235



68, 19.458, 219.835

Rectangle

The Rectangle color scheme consists of four colors that form a rectangle on the color wheel.



60, 25.313, 38.235



60, 25.313, 88.235



60, 25.313, 218.235



60, 25.313, 268.235

Sweetspot

The Sweet Spot groups the original color and five complimentary colors.



60, 25.312, 38.241



90, 8.372, 37.934



59, 40.263, 332.285



47, 5.702, 37.934



98, 0.011, 296.813



51, 0.007, 296.813

Same Dimension

The Same Dimension uses a secret algorithm to generate beautiful new colors.



60, 25.312, 38.241



72, 38.454, 38.552



69, 27.397, 87.719



38, 3.495, 37.934



34, 69.398, 43.368



4, 10.873, 31.753

Inverse Universe

The Inverse Universe completely reimagines the original color for something new.



68, 19.458, 219.835



84, 27.645, 220.560



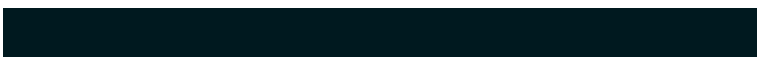
58, 27.412, 278.354



39, 3.297, 218.455



49, 30.568, 232.561



7, 9.534, 226.589

Previews

White Background



This preview shows how the CIELCh color 60, 25.313, 38.235 looks on a white background.

Color Contrast Check

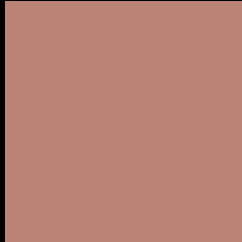
Large Text (above 18pt) WCAG AA ✓ Pass

Any Text WCAG AA ✗ Fail

Large Text (above 18pt) WCAG AAA ✗ Fail

Any Text WCAG AAA ✗ Fail

Black Background



This preview shows how the CIELCh color 60, 25.313, 38.235 looks on a black background.

Color Contrast Check

Large Text (above 18pt) WCAG AA ✓ Pass

Any Text WCAG AA ✓ Pass

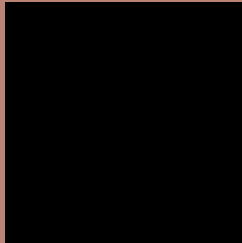
Large Text (above 18pt) WCAG AAA ✓ Pass

Any Text WCAG AAA × Fail

If you want to check with other color combinations, try the [Color Contrast Checker](#).

CIELCh 60, 25.313, 38.235

Background



This preview shows how black text looks on a background with the CIELCh color 60, 25.313, 38.235.



This preview shows how white text looks on a background with the CIELCh color 60, 25.313, 38.235.

Color Blindness Simulation

Color vision deficiency is a very complex topic, and I could not describe the different causes any better than Wikipedia does, so if you want to learn more, you should check out their [article about color blindness](#).

Dichromacy



Original Color

60, 25.313, 38.235

Protanopia

60, 11.586, 94.511

Deuteranopia

60, 17.932, 63.398



Tritanopia
60, 25.350, 9.628

Trichromacy



Original Color
60, 25.313, 38.235

Protanomaly
60, 14.667, 63.388

Deuteranomaly
60, 20.385, 52.023

Tritanomaly
60, 24.478, 19.474

Monochromacy



Original Color
60, 25.313, 38.235

Achromatopsia
61, 0.008, 296.813

Achromatomaly
60, 8.564, 39.179

CSS Examples

Text

The CSS property to change the color of the text to CIELCh 60, 25.313, 38.235 is called "color". The color property can be set on classes, ids or directly on the HTML element.

This example shows how text in the color `rgb(187, 131, 118)` looks like.

```
.text, #text, p{  
    color:rgb(187, 131, 118)  
}
```

If you want to add a text shadow in that color use the text-shadow property, you can generate a text shadow directly with our [CSS Text Shadow Generator](#).

Here you see how black text with a 4 pixel rgb(187, 131, 118) colored shadow looks like.

```
.shadow{ text-shadow: 4px 4px 2px rgb(187, 131, 118) }
```

Border

The CSS property to change the border of an element to CIELCh 60, 25.313, 38.235 is called "border". The border property can be set on classes, ids or directly on the HTML element.

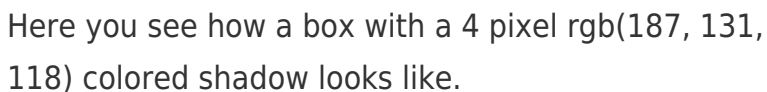
This example shows the color as border, it can be applied via the CSS property "border" or "border-color".

```
.border, #border, table{ border:4px solid rgb(187, 131, 118) }
```

If only the border color should be changed use the property `border-color`.

```
.border{ border-color:rgb(187, 131, 118) }
```

If you want to add a box shadow in that color use:



Here you see how a box with a 4 pixel `rgb(187, 131, 118)` colored shadow looks like.

```
.boxshadow{ -moz-box-shadow:4px 4px 4px 4px rgb(187, 131, 118); -webkit-box-shadow:4px 4px 4px 4px rgb(187, 131, 118); box-shadow:4px 4px 4px 4px rgb(187, 131, 118) }
```

Background

The CSS property to change the background color of an element to CIELCh 60, 25.313, 38.235 is called "background". The background property can be set on classes, ids or directly on the HTML element.

```
.background, #background, body{  
background: rgb(187, 131, 118) }
```

If only the background color should be changed can be used:

```
.background{ background-color: rgb(187,  
131, 118) }
```

This example shows the color as background, it is applied via the CSS property "background".

To optimize and compress your CSS code, you can use our [online CSS compressor and optimizer](#) based on csstidy. If you want to create a linear or radial gradient as background or border, check our [CSS Gradient Generator](#).

Hey! You found this booklet interesting? Support Converting Colors with the new Membership Option!

The pro membership hides all ads, plus gives you double the colors in the color bucket, and more awesome pro features!

[Learn more, Memberships starting at \\$2.50/m!](#)

**Follow me
on Twitter!**

@ConvertingColor