

Converting Colors

CIELCh(60, 26.419, 37.356)

Have a look what the booklet for
CIELCh(60, 26.419, 37.356) contains.

CIELCh(60, 26.627, 37.541)	3
<i>Conversions</i>	4
<i>Details</i>	6
<i>Harmonies</i>	11
<i>Previews</i>	20
<i>Color Blindness Simulation</i>	23
<i>CSS Examples</i>	26

Color

CIELCh(60, 26.627, 37.541)

Conversions

Conversions Part 1

Format	Color
Hex	BD8275
RGB	189, 130, 117
RGB Percent	74%, 51%, 46%
CMY	0.2583, 0.4897, 0.5407
CMYK	0.00, 0.31, 0.38, 0.26
HSL	11°, 35%, 60%
HSV	11°, 38%, 74%
XYZ	32.2390, 28.1233, 20.5972
YIQ	146.1590, 39.3370, 8.4650

Conversions

Conversions Part 2

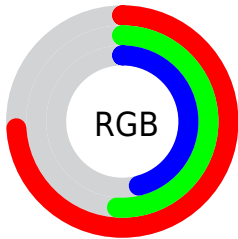
Format	Color
RYB	189, 133, 117
Decimal	12419701
CIELab	60.00, 21.11, 16.22
CIElCh	60, 26.627, 37.541
Yxy	28.1233, 0.3982, 0.3474
Android (android.graphics.Color)	4290609781 (0xFFBD8275)
YUV	146.1590, -14.3754, 37.5716
Hunter-Lab	53.0314, 15.7091, 14.0940

Details

The CIELCh color **60, 26.627, 37.541** is a dark color, and the websafe version is hex **CC9999**. A complement of this color would be **68, 20.237, 218.869**, and the grayscale version is **61, 0.008, 296.813**.

A 20% lighter version of the original color is **80, 26.778, 37.238**, and **40, 26.758, 37.017** is the 20% darker color. If you saturate the color by 10%, you get **56, 35.004, 38.051**, and if you desaturate by 10%, it is **64, 18.835, 37.250**.

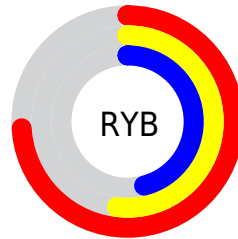
Distribution



Red (74%)

Green (51%)

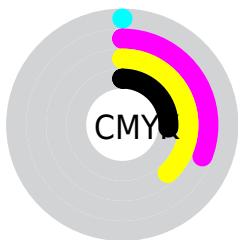
Blue (46%)



Red (74%)

Yellow (52%)

Blue (46%)

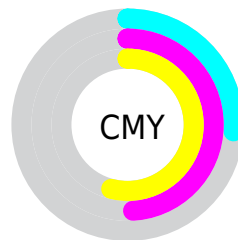


Cyan (0%)

Magenta (31%)

Yellow (38%)

Black (26%)



Cyan (26%)

Magenta (49%)

Yellow (54%)

Brightness & Saturation Gradients

These gradients show how the CIELCh color 60, 26.627, 37.541 changes by changing the brightness by 10 percent. The first figure shows a shift by +10% for each color and the second figure -10%.

Similar to the brightness gradients but the following saturation gradients show a change of the CIELCh color 60, 26.627, 37.541 by changing the saturation by 10% instead.

60, 26.627, 37.541

60, 26.627, 37.541

100, 26.627,
37.541

50, 26.627, 37.541

80, 26.627, 37.541

40, 26.627, 37.541

90, 26.627, 37.541

30, 26.627, 37.541

20, 26.627, 37.541

10, 26.627, 37.541

0, 26.627, 37.541

60, 26.627, 37.541

60, 26.627, 37.541

56, 35.004, 38.051

64, 18.835, 37.250

52, 43.920, 38.802

69, 11.632, 37.114

■ 49, 53.240, 39.809

■ 73, 4.987, 37.067

■ 46, 62.659, 41.004

■ 78, 1.145, 217.744

■ 43, 71.504, 42.112

■ 82, 6.813, 217.550

■ 41, 78.619, 42.677

■ 87, 12.070,
217.757

■ 41, 79.937, 42.898

■ 91, 16.964,
218.023

■ 96, 21.055,
199.366

■ 96, 21.353,
198.102

Harmonies

Complementary

The Complementary color scheme is a pair of colors which are on the opposite of each other on the color wheel.



60, 26.627, 37.541



68, 20.237, 218.869

Rectangle

The Rectangle color scheme consists of four colors that form a rectangle on the color wheel.



60, 26.627, 37.541



60, 26.627, 87.541



60, 26.627, 217.541



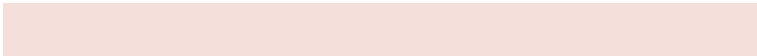
60, 26.627, 267.541

Sweetspot

The Sweet Spot groups the original color and five complimentary colors.



60, 26.626, 37.546



90, 8.484, 37.081



59, 42.366, 331.758



47, 5.730, 37.086



98, 0.011, 296.813



51, 0.007, 296.813

Same Dimension

The Same Dimension uses a secret algorithm to generate beautiful new colors.



60, 26.626, 37.546



72, 41.081, 37.970



69, 28.180, 86.205



37, 3.512, 37.074



34, 69.607, 43.125



4, 10.919, 31.180

Inverse Universe

The Inverse Universe completely reimagines the original color for something new.



68, 20.237, 218.869



85, 28.954, 219.658



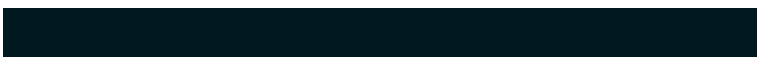
59, 27.978, 277.361



39, 3.312, 217.526



50, 30.507, 230.864



7, 9.564, 225.187

Previews

White Background



This preview shows how the CIELCh color 60, 26.627, 37.541 looks on a white background.

Color Contrast Check

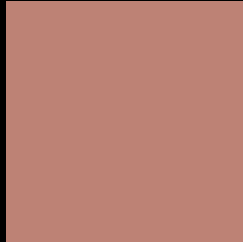
Large Text (above 18pt) WCAG AA ✓ Pass

Any Text WCAG AA ✗ Fail

Large Text (above 18pt) WCAG AAA ✗ Fail

Any Text WCAG AAA ✗ Fail

Black Background



This preview shows how the CIELCh color 60, 26.627, 37.541 looks on a black background.

Color Contrast Check

Large Text (above 18pt) WCAG AA ✓ Pass

Any Text WCAG AA ✓ Pass

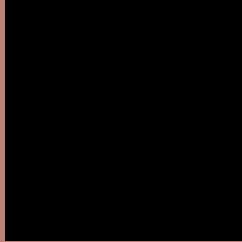
Large Text (above 18pt) WCAG AAA ✓ Pass

Any Text WCAG AAA × Fail

If you want to check with other color combinations, try the [Color Contrast Checker](#).

CIELCh 60, 26.627, 37.541

Background



This preview shows how black text looks on a background with the CIELCh color 60, 26.627, 37.541.

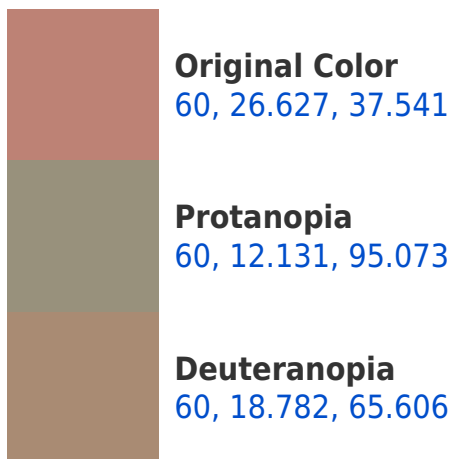


This preview shows how white text looks on a background with the CIELCh color 60, 26.627, 37.541.

Color Blindness Simulation

Color vision deficiency is a very complex topic, and I could not describe the different causes any better than Wikipedia does, so if you want to learn more, you should check out their [article about color blindness](#).

Dichromacy





Tritanopia
60, 26.598, 10.405

Trichromacy



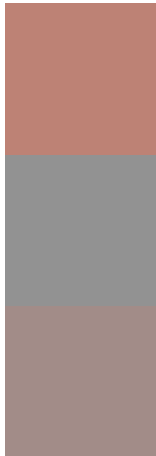
Original Color
60, 26.627, 37.541

Protanomaly
60, 14.982, 62.277

Deuteranomaly
60, 20.732, 53.222

Tritanomaly
60, 25.788, 19.770

Monochromacy



Original Color
60, 26.627, 37.541

Achromatopsia
61, 0.008, 296.813

Achromatomaly
60, 9.186, 34.316

CSS Examples

Text

The CSS property to change the color of the text to CIELCh 60, 26.627, 37.541 is called "color". The color property can be set on classes, ids or directly on the HTML element.

This example shows how text in the color `rgb(189, 130, 117)` looks like.

```
.text, #text, p{  
    color:rgb(189, 130, 117)  
}
```

If you want to add a text shadow in that color use the text-shadow property, you can generate a text shadow directly with our [CSS Text Shadow Generator](#).

Here you see how black text with a 4 pixel rgb(189, 130, 117) colored shadow looks like.

```
.shadow{ text-shadow: 4px 4px 2px rgb(189, 130, 117) }
```

Border

The CSS property to change the border of an element to CIELCh 60, 26.627, 37.541 is called "border". The border property can be set on classes, ids or directly on the HTML element.

This example shows the color as border, it can be applied via the CSS property "border" or "border-color".

```
.border, #border, table{ border:4px solid rgb(189, 130, 117) }
```

If only the border color should be changed use the property `border-color`.

```
.border{ border-color:rgb(189, 130, 117) }
```

If you want to add a box shadow in that color use:

Here you see how a box with a 4 pixel `rgb(189, 130, 117)` colored shadow looks like.

```
.boxshadow{ -moz-box-shadow:4px 4px 4px 4px rgb(189, 130, 117); -webkit-box-shadow:4px 4px 4px 4px rgb(189, 130, 117); box-shadow:4px 4px 4px 4px rgb(189, 130, 117) }
```

Background

The CSS property to change the background color of an element to CIELCh 60, 26.627, 37.541 is called "background". The background property can be set on classes, ids or directly on the HTML element.

```
.background, #background, body{  
background: rgb(189, 130, 117) }
```

If only the background color should be changed can be used:

```
.background{ background-color: rgb(189,  
130, 117) }
```

This example shows the color as background, it is applied via the CSS property "background".

To optimize and compress your CSS code, you can use our [online CSS compressor and optimizer](#) based on csstidy. If you want to create a linear or radial gradient as background or border, check our [CSS Gradient Generator](#).

Hey! You found this booklet interesting? Support Converting Colors with the new Membership Option!

The pro membership hides all ads, plus gives you double the colors in the color bucket, and more awesome pro features!

[Learn more, Memberships starting at \\$2.50/m!](#)

**Follow me
on Twitter!**

@ConvertingColor