

# Converting Colors

CIELCh(60, 26.731, 36.546)

Have a look what the booklet for  
CIELCh(60, 26.731, 36.546) contains.

<b>CIELCh(60, 26.824, 36.253)</b> .....	3
<i><b>Conversions</b></i> .....	4
<i><b>Details</b></i> .....	6
<i><b>Harmonies</b></i> .....	11
<i><b>Previews</b></i> .....	20
<i><b>Color Blindness Simulation</b></i> .....	23
<i><b>CSS Examples</b></i> .....	26

**Color**

**CIELCh(60, 26.824, 36.253)**

# Conversions

## Conversions Part 1

<b>Format</b>	<b>Color</b>
Hex	BE8276
RGB	190, 130, 118
RGB Percent	75%, 51%, 46%
CMY	0.2559, 0.4911, 0.5381
CMYK	0.00, 0.32, 0.38, 0.26
HSL	10°, 36%, 60%
HSV	10°, 38%, 74%
XYZ	32.3829, 28.1233, 20.7927
YIQ	146.5720, 39.6120, 8.9880

# Conversions

## Conversions Part 2

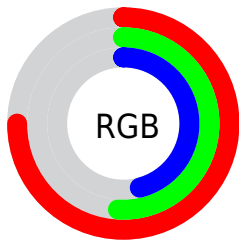
<b>Format</b>	<b>Color</b>
<b>R<sub>YB</sub></b>	190, 132, 118
Decimal	12485238
CIE <sub>Lab</sub>	60.00, 21.63, 15.86
CIE <sub>LCh</sub>	60, 26.824, 36.253
Yxy	28.1233, 0.3983, 0.3459
Android (android.graphics.Color)	4290675318 (0xFFBE8276)
YUV	146.5720, -14.0860, 38.0864
Hunter-Lab	53.0314, 16.1936, 13.8754

# Details

The CIELCh color **60, 26.824, 36.253** is a dark color, and the websafe version is hex **CC9999**. A complement of this color would be **69, 20.374, 216.990**, and the grayscale version is **61, 0.008, 296.813**.

A 20% lighter version of the original color is **80, 26.973, 36.005**, and **40, 26.963, 35.697** is the 20% darker color. If you saturate the color by 10%, you get **56, 35.285, 36.858**, and if you desaturate by 10%, it is **64, 18.949, 35.878**.

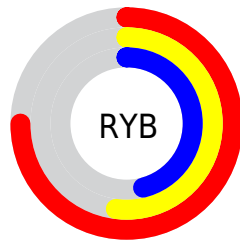
# Distribution



Red (75%)

Green (51%)

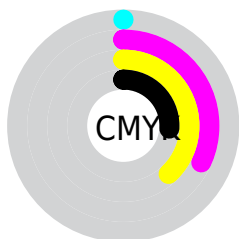
Blue (46%)



Red (75%)

Yellow (52%)

Blue (46%)

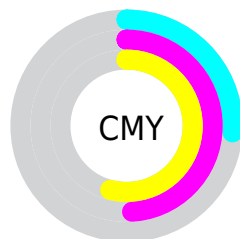


Cyan (0%)

Magenta (32%)

Yellow (38%)

Black (26%)



Cyan (26%)

Magenta (49%)

Yellow (54%)

# Brightness & Saturation Gradients

These gradients show how the CIELCh color 60, 26.824, 36.253 changes by changing the brightness by 10 percent. The first figure shows a shift by +10% for each color and the second figure -10%.

Similar to the brightness gradients but the following saturation gradients show a change of the CIELCh color 60, 26.824, 36.253 by changing the saturation by 10% instead.



60, 26.824, 36.253

60, 26.824, 36.253

100, 26.824,  
36.253

50, 26.824, 36.253

80, 26.824, 36.253

40, 26.824, 36.253

90, 26.824, 36.253

30, 26.824, 36.253

20, 26.824, 36.253

10, 26.824, 36.253

0, 26.824, 36.253

60, 26.824, 36.253

60, 26.824, 36.253

56, 35.285, 36.858

64, 18.949, 35.878

52, 44.281, 37.721

69, 11.668, 35.668

■ 49, 53.671, 38.862

■ 73, 4.951, 35.553

■ 46, 63.148, 40.216

■ 78, 1.244, 216.136

■ 43, 72.038, 41.509

■ 82, 6.970, 215.916

■ 41, 79.152, 42.254

■ 87, 12.277,  
216.070

■ 41, 80.555, 42.524

■ 92, 17.216,  
216.285

■ 96, 21.173,  
198.114

# Harmonies

# Complementary

The Complementary color scheme is a pair of colors which are on the opposite of each other on the color wheel.



60, 26.824, 36.253



69, 20.374, 216.990

# Rectangle

The Rectangle color scheme consists of four colors that form a rectangle on the color wheel.



60, 26.824, 36.253



60, 26.824, 86.253



60, 26.824, 216.253



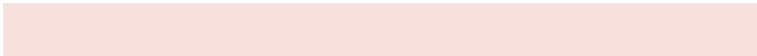
60, 26.824, 266.253

# Sweetspot

The Sweet Spot groups the original color and five complimentary colors.



60, 26.822, 36.258



91, 8.634, 35.590



59, 42.320, 331.749



48, 5.882, 35.604



99, 0.012, 296.813



52, 0.007, 296.813



# Same Dimension

The Same Dimension uses a secret algorithm to generate beautiful new colors.



60, 26.822, 36.258



72, 41.806, 36.774



69, 28.142, 86.224



37, 3.544, 35.570



34, 69.963, 42.717



4, 11.003, 30.177





# Inverse Universe

The Inverse Universe completely reimagines the original color for something new.



69, 20.374, 216.990



86, 29.393, 217.694



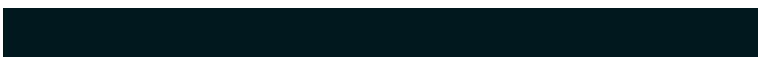
59, 27.941, 277.331



39, 3.341, 215.901



51, 30.459, 227.861



7, 9.634, 222.698



# Previews

## White Background



This preview shows how the CIELCh color 60, 26.824, 36.253 looks on a white background.

## Color Contrast Check

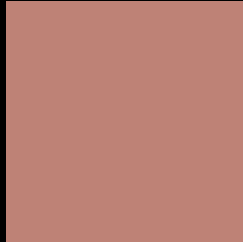
Large Text (above 18pt) WCAG AA ✓ Pass

Any Text WCAG AA ✗ Fail

Large Text (above 18pt) WCAG AAA ✗ Fail

Any Text WCAG AAA ✗ Fail

# Black Background



This preview shows how the CIE LCh color 60, 26.824, 36.253 looks on a black background.

## Color Contrast Check

Large Text (above 18pt) WCAG AA ✓ Pass

Any Text WCAG AA ✓ Pass

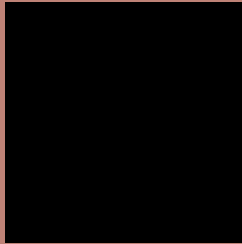
Large Text (above 18pt) WCAG AAA ✓ Pass

Any Text WCAG AAA × Fail

If you want to check with other color combinations, try the [Color Contrast Checker](#).

# CIELCh 60, 26.824, 36.253

## Background



This preview shows how black text looks on a background with the CIELCh color 60, 26.824, 36.253.



This preview shows how white text looks on a background with the CIELCh color 60, 26.824, 36.253.

# Color Blindness Simulation

Color vision deficiency is a very complex topic, and I could not describe the different causes any better than Wikipedia does, so if you want to learn more, you should check out their [article about color blindness](#).

## Dichromacy





**Tritanopia**  
60, 27.003, 10.644



# Trichromacy



**Original Color**  
60, 26.824, 36.253

**Protanomaly**  
60, 14.934, 59.717

**Deuteranomaly**  
60, 20.762, 51.418

**Tritanomaly**  
60, 26.212, 19.859

# Monochromacy



**Original Color**  
60, 26.824, 36.253

**Achromatopsia**  
61, 0.008, 296.813

**Achromatomaly**  
60, 9.186, 34.316

# CSS Examples

## Text

The CSS property to change the color of the text to CIELCh 60, 26.824, 36.253 is called "color". The color property can be set on classes, ids or directly on the HTML element.

This example shows how text in the color `rgb(190, 130, 118)` looks like.

```
.text, #text, p{  
    color:rgb(190, 130, 118)  
}
```

If you want to add a text shadow in that color use the text-shadow property, you can generate a text shadow directly with our [CSS Text Shadow Generator](#).

Here you see how black text with a 4 pixel rgb(190, 130, 118) colored shadow looks like.

```
.shadow{ text-shadow: 4px 4px 2px rgb(190, 130, 118) }
```

## Border

The CSS property to change the border of an element to CIELCh 60, 26.824, 36.253 is called "border". The border property can be set on classes, ids or directly on the HTML element.

This example shows the color as border, it can be applied via the CSS property "border" or "border-color".

```
.border, #border, table{ border:4px solid rgb(190, 130, 118) }
```

If only the border color should be changed use the property border-color.

```
.border{ border-color:rgb(190, 130, 118) }
```

If you want to add a box shadow in that color use:

Here you see how a box with a 4 pixel rgb(190, 130, 118) colored shadow looks like.

```
.boxshadow{ -moz-box-shadow:4px 4px 4px  
4px rgb(190, 130, 118); -webkit-box-  
shadow:4px 4px 4px 4px rgb(190, 130, 118);  
box-shadow:4px 4px 4px 4px rgb(190, 130,  
118) }
```

# Background

The CSS property to change the background color of an element to CIELCh 60, 26.824, 36.253 is called "background". The background property can be set on classes, ids or directly on the HTML element.

```
.background, #background, body{  
background: rgb(190, 130, 118) }
```

If only the background color should be changed can be used:

```
.background{ background-color: rgb(190,  
130, 118) }
```

This example shows the color as background, it is applied via the CSS property "background".

To optimize and compress your CSS code, you can use our [online CSS compressor and optimizer](#) based on csstidy. If you want to create a linear or radial gradient as background or border, check our [CSS Gradient Generator](#).

Hey! You found this booklet interesting? Support Converting Colors with the new Membership Option!

The pro membership hides all ads, plus gives you double the colors in the color bucket, and more awesome pro features!

**[Learn more, Memberships starting at \\$2.50/m!](#)**

**Follow me  
on Twitter!**

@ConvertingColor