

Converting Colors

CIELCh(60, 27.982, 44.910)

Have a look what the booklet for
CIELCh(60, 27.982, 44.910) contains.

CIELCh(60, 28.032, 44.909)	3
<i>Conversions</i>	4
<i>Details</i>	6
<i>Harmonies</i>	11
<i>Previews</i>	20
<i>Color Blindness Simulation</i>	23
<i>CSS Examples</i>	26

Color

CIELCh(60, 28.032, 44.909)

Conversions

Conversions Part 1

Format	Color
Hex	BD836F
RGB	189, 131, 111
RGB Percent	74%, 51%, 44%
CMY	0.2596, 0.4869, 0.5654
CMYK	0.00, 0.31, 0.41, 0.26
HSL	15°, 37%, 59%
HSV	15°, 41%, 74%
XYZ	31.8908, 28.1233, 18.7372
YIQ	146.0620, 40.9880, 6.0760

Conversions

Conversions Part 2

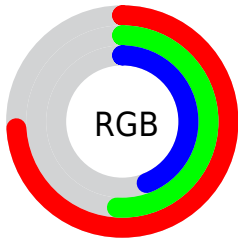
Format	Color
RYB	189, 138, 111
Decimal	12419951
CIELab	60.00, 19.85, 19.79
CIElCh	60, 28.032, 44.909
Yxy	28.1233, 0.4050, 0.3571
Android (android.graphics.Color)	4290610031 (0xFFBD836F)
YUV	146.0620, -17.2856, 37.6566
Hunter-Lab	53.0314, 14.5371, 16.1735

Details

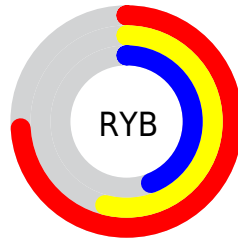
The CIELCh color `60, 28.032, 44.909` is a dark color, and the websafe version is hex `CC9999`. A complement of this color would be `66, 21.176, 229.932`, and the grayscale version is `61, 0.008, 296.813`.

A 20% lighter version of the original color is `80, 28.021, 44.318`, and `40, 27.894, 44.995` is the 20% darker color. If you saturate the color by 10%, you get `56, 36.223, 44.934`, and if you desaturate by 10%, it is `64, 20.403, 45.045`.

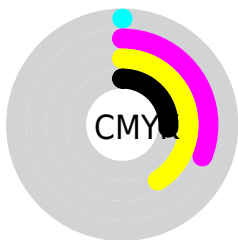
Distribution



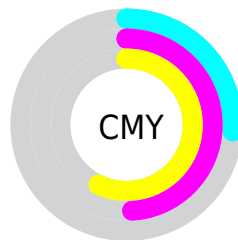
- Red (74%)
- Green (51%)
- Blue (44%)



- Red (74%)
- Yellow (54%)
- Blue (44%)



- Cyan (0%)
- Magenta (31%)
- Yellow (41%)
- Black (26%)



- Cyan (26%)
- Magenta (49%)
- Yellow (57%)


Brightness & Saturation Gradients

These gradients show how the CIELCh color 60, 28.032, 44.909 changes by changing the brightness by 10 percent. The first figure shows a shift by +10% for each color and the second figure -10%.

Similar to the brightness gradients but the following saturation gradients show a change of the CIELCh color 60, 28.032, 44.909 by changing the saturation by 10% instead.

 60, 28.032, 44.909

 60, 28.032, 44.909

 100, 28.032,
44.909

 50, 28.032, 44.909

 80, 28.032, 44.909

 40, 28.032, 44.909

 90, 28.032, 44.909

 30, 28.032, 44.909

 20, 28.032, 44.909

 10, 28.032, 44.909

 0, 28.032, 44.909

 60, 28.032, 44.909

 60, 28.032, 44.909

 56, 36.223, 44.934

 64, 20.403, 45.045

 53, 44.930, 45.118

 68, 13.336, 45.297

50, 53.996, 45.439

72, 6.799, 45.628

47, 63.050, 45.771

76, 0.750, 45.473

44, 71.263, 45.768

80, 4.862, 226.744

43, 77.184, 45.461

84, 10.084,
227.225

89, 14.964,
227.765

93, 18.418,
217.939

96, 21.451,
198.096

Harmonies

Complementary

The Complementary color scheme is a pair of colors which are on the opposite of each other on the color wheel.



60, 28.032, 44.909



66, 21.176, 229.932

Rectangle

The Rectangle color scheme consists of four colors that form a rectangle on the color wheel.



60, 28.032, 44.909



60, 28.032, 94.909



60, 28.032, 224.909



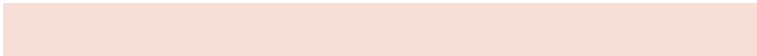
60, 28.032, 274.909

Sweetspot

The Sweet Spot groups the original color and five complimentary colors.



60, 28.031, 44.914



90, 8.948, 45.597



57, 43.212, 335.214



47, 5.964, 45.552



98, 0.011, 296.813



51, 0.007, 296.813

Same Dimension

The Same Dimension uses a secret algorithm to generate beautiful new colors.



60, 28.031, 44.914



72, 43.514, 44.930



70, 32.747, 92.160



38, 3.383, 45.692



36, 67.345, 45.859



4, 10.520, 36.908

Inverse Universe

The Inverse Universe completely reimagines the original color for something new.



66, 21.176, 229.932



81, 30.386, 231.512



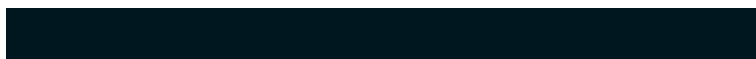
55, 33.854, 283.821



39, 3.205, 226.810



46, 32.132, 246.959



6, 9.502, 238.389

Previews

White Background



This preview shows how the CIELCh color 60, 28.032, 44.909 looks on a white background.

Color Contrast Check

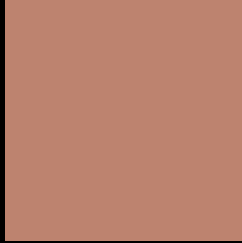
Large Text (above 18pt) WCAG AA ✓ Pass

Any Text WCAG AA × Fail

Large Text (above 18pt) WCAG AAA × Fail

Any Text WCAG AAA × Fail

Black Background



This preview shows how the CIE LCh color 60, 28.032, 44.909 looks on a black background.

Color Contrast Check

Large Text (above 18pt) WCAG AA ✓ Pass

Any Text WCAG AA ✓ Pass

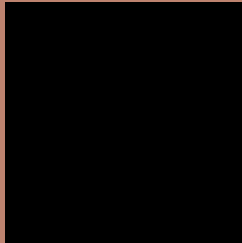
Large Text (above 18pt) WCAG AAA ✓ Pass

Any Text WCAG AAA × Fail

If you want to check with other color combinations, try the [Color Contrast Checker](#).

CIELCh 60, 28.032, 44.909

Background



This preview shows how black text looks on a background with the CIELCh color 60, 28.032, 44.909.



This preview shows how white text looks on a background with the CIELCh color 60, 28.032, 44.909.

Color Blindness Simulation

Color vision deficiency is a very complex topic, and I could not describe the different causes any better than Wikipedia does, so if you want to learn more, you should check out their [article about color blindness](#).

Dichromacy



Original Color

60, 28.032, 44.909

Protanopia

60, 16.146, 94.858

Deuteranopia

60, 22.048, 69.299



Tritanopia
60, 26.598, 10.405

Trichromacy



Original Color
60, 28.032, 44.909

Protanomaly
60, 18.312, 69.595

Deuteranomaly
60, 23.346, 58.892

Tritanomaly
60, 26.014, 23.421

Monochromacy



Original Color
60, 28.032, 44.909

Achromatopsia
61, 0.008, 296.813

Achromatomaly
60, 9.812, 43.711

CSS Examples

Text

The CSS property to change the color of the text to CIELCh 60, 28.032, 44.909 is called "color". The color property can be set on classes, ids or directly on the HTML element.

This example shows how text in the color `rgb(189, 131, 111)` looks like.

```
.text, #text, p{  
    color:rgb(189, 131, 111)  
}
```

If you want to add a text shadow in that color use the text-shadow property, you can generate a text shadow directly with our [CSS Text Shadow Generator](#).

Here you see how black text with a 4 pixel rgb(189, 131, 111) colored shadow looks like.

```
.shadow{ text-shadow: 4px 4px 2px rgb(189, 131, 111) }
```

Border

The CSS property to change the border of an element to CIELCh 60, 28.032, 44.909 is called "border". The border property can be set on classes, ids or directly on the HTML element.

This example shows the color as border, it can be applied via the CSS property "border" or "border-color".

```
.border, #border, table{ border:4px solid rgb(189, 131, 111) }
```

If only the border color should be changed use the property `border-color`.

```
.border{ border-color:rgb(189, 131, 111) }
```

If you want to add a box shadow in that color use:

Here you see how a box with a 4 pixel `rgb(189, 131, 111)` colored shadow looks like.

```
.boxshadow{ -moz-box-shadow:4px 4px 4px  
4px rgb(189, 131, 111); -webkit-box-  
shadow:4px 4px 4px 4px rgb(189, 131, 111);  
box-shadow:4px 4px 4px 4px rgb(189, 131,  
111) }
```

Background

The CSS property to change the background color of an element to CIELCh 60, 28.032, 44.909 is called "background". The background property can be set on classes, ids or directly on the HTML element.

```
.background, #background, body{  
background: rgb(189, 131, 111) }
```

If only the background color should be changed can be used:

```
.background{ background-color: rgb(189,  
131, 111) }
```

This example shows the color as background, it is applied via the CSS property "background".

To optimize and compress your CSS code, you can use our [online CSS compressor and optimizer](#) based on csstidy. If you want to create a linear or radial gradient as background or border, check our [CSS Gradient Generator](#).

Hey! You found this booklet interesting? Support Converting Colors with the new Membership Option!

The pro membership hides all ads, plus gives you double the colors in the color bucket, and more awesome pro features!

[Learn more, Memberships starting at \\$2.50/m!](#)

**Follow me
on Twitter!**

@ConvertingColor