

Converting Colors

CIELCh(60, 28.085, 70.467)

Have a look what the booklet for
CIELCh(60, 28.085, 70.467) contains.

CIELCh(60, 28.293, 69.951)	3
<i>Conversions</i>	4
<i>Details</i>	6
<i>Harmonies</i>	11
<i>Previews</i>	20
<i>Color Blindness Simulation</i>	23
<i>CSS Examples</i>	26

Color

CIELCh(60, 28.293, 69.951)

Conversions

Conversions Part 1

Format	Color
Hex	B08962
RGB	176, 137, 98
RGB Percent	69%, 54%, 38%
CMY	0.3086, 0.4616, 0.6146
CMYK	0.00, 0.22, 0.44, 0.31
HSL	30°, 33%, 54%
HSV	30°, 44%, 69%
XYZ	29.1758, 28.1233, 15.5121
YIQ	144.2150, 35.7630, -3.8610

Conversions

Conversions Part 2

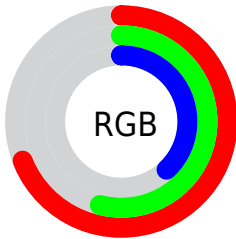
Format	Color
R_{YB}	176, 176, 98
Decimal	11569506
CIE _{Lab}	60.00, 9.70, 26.58
CIE _{LCh}	60, 28.293, 69.951
Yxy	28.1233, 0.4007, 0.3863
Android (android.graphics.Color)	4289759586 (0xFFB08962)
YUV	144.2150, -22.7840, 27.8754
Hunter-Lab	53.0314, 5.3985, 19.7792

Details

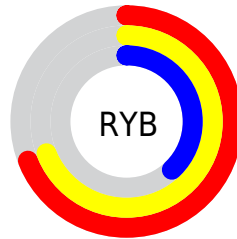
The CIELCh color **60, 28.293, 69.951** is a dark color, and the websafe version is hex **CC9966**. A complement of this color would be **56, 24.946, 263.230**, and the grayscale version is **60, 0.008, 296.813**.

A 20% lighter version of the original color is **80, 28.276, 69.674**, and **40, 27.970, 69.864** is the 20% darker color. If you saturate the color by 10%, you get **57, 35.444, 68.689**, and if you desaturate by 10%, it is **63, 21.400, 71.207**.

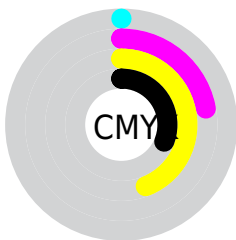
Distribution



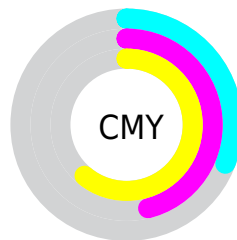
- Red (69%)
- Green (54%)
- Blue (38%)



- Red (69%)
- Yellow (69%)
- Blue (38%)



- Cyan (0%)
- Magenta (22%)
- Yellow (44%)
- Black (31%)



- Cyan (31%)
- Magenta (46%)
- Yellow (61%)

Brightness & Saturation Gradients

These gradients show how the CIELCh color 60, 28.293, 69.951 changes by changing the brightness by 10 percent. The first figure shows a shift by +10% for each color and the second figure -10%.

Similar to the brightness gradients but the following saturation gradients show a change of the CIELCh color 60, 28.293, 69.951 by changing the saturation by 10% instead.

60, 28.293, 69.951

60, 28.293, 69.951

100, 28.293,
69.951

50, 28.293, 69.951

80, 28.293, 69.951

40, 28.293, 69.951

90, 28.293, 69.951

30, 28.293, 69.951

20, 28.293, 69.951

10, 28.293, 69.951

0, 28.293, 69.951

60, 28.293, 69.951

60, 28.293, 69.951

57, 35.444, 68.689

63, 21.400, 71.207

55, 42.746, 67.381

65, 14.802, 72.444

53, 49.963, 65.965

68, 8.500, 73.659

51, 56.617, 64.289

71, 2.479, 74.776

48, 61.921, 62.070

74, 3.283, 256.198

47, 64.584, 60.730

76, 8.813, 257.287

79, 14.136,
258.387

82, 19.274,
259.454

85, 23.419,
258.983

Harmonies

Complementary

The Complementary color scheme is a pair of colors which are on the opposite of each other on the color wheel.



60, 28.293, 69.951



56, 24.946, 263.230

Rectangle

The Rectangle color scheme consists of four colors that form a rectangle on the color wheel.



60, 28.293, 69.951



60, 28.293, 119.951



60, 28.293, 249.951



60, 28.293, 299.951

Sweetspot

The Sweet Spot groups the original color and five complimentary colors.



60, 28.293, 69.956



87, 9.578, 73.783



52, 37.684, 347.134



45, 6.729, 73.524



96, 0.011, 296.813



48, 0.006, 296.813

Same Dimension

The Same Dimension uses a secret algorithm to generate beautiful new colors.



60, 28.293, 69.956



74, 42.868, 68.733



70, 40.787, 105.255



36, 3.371, 74.238



41, 58.048, 61.189



4, 7.581, 63.003

Inverse Universe

The Inverse Universe completely reimagines the original color for something new.



56, 24.946, 263.230



67, 36.707, 265.861



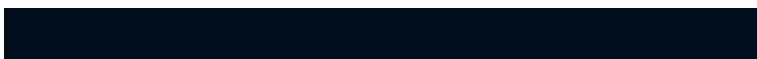
45, 45.649, 295.634



36, 3.300, 256.674



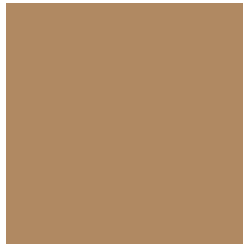
33, 48.613, 283.350



3, 8.801, 266.082

Previews

White Background



This preview shows how the CIELCh color 60, 28.293, 69.951 looks on a white background.

Color Contrast Check

Large Text (above 18pt) WCAG AA ✓ Pass

Any Text WCAG AA × Fail

Large Text (above 18pt) WCAG AAA × Fail

Any Text WCAG AAA × Fail

Black Background



This preview shows how the CIE LCh color 60, 28.293, 69.951 looks on a black background.

Color Contrast Check

Large Text (above 18pt) WCAG AA ✓ Pass

Any Text WCAG AA ✓ Pass

Large Text (above 18pt) WCAG AAA ✓ Pass

Any Text WCAG AAA × Fail

If you want to check with other color combinations, try the [Color Contrast Checker](#).

CIELCh 60, 28.293, 69.951

Background



This preview shows how black text looks on a background with the CIELCh color 60, 28.293, 69.951.



This preview shows how white text looks on a background with the CIELCh color 60, 28.293, 69.951.

Color Blindness Simulation

Color vision deficiency is a very complex topic, and I could not describe the different causes any better than Wikipedia does, so if you want to learn more, you should check out their [article about color blindness](#).

Dichromacy



Original Color

60, 28.293, 69.951

Protanopia

60, 25.015, 96.353

Deuteranopia

60, 27.771, 74.710



Tritanopia
60, 20.043, 5.457

Trichromacy



Original Color
60, 28.293, 69.951

Protanomaly
60, 25.344, 86.184

Deuteranomaly
60, 27.868, 72.669

Tritanomaly
60, 19.496, 34.420

Monochromacy



Original Color
60, 28.293, 69.951

Achromatopsia
60, 0.008, 296.813

Achromatomaly
60, 9.761, 73.237

CSS Examples

Text

The CSS property to change the color of the text to CIELCh 60, 28.293, 69.951 is called "color". The color property can be set on classes, ids or directly on the HTML element.

This example shows how text in the color `rgb(176, 137, 98)` looks like.

```
.text, #text, p{  
    color:rgb(176, 137, 98)  
}
```

If you want to add a text shadow in that color use the text-shadow property, you can generate a text shadow directly with our [CSS Text Shadow Generator](#).

Here you see how black text with a 4 pixel rgb(176, 137, 98) colored shadow looks like.

```
.shadow{ text-shadow: 4px 4px 2px rgb(176, 137, 98) }
```

Border

The CSS property to change the border of an element to CIELCh 60, 28.293, 69.951 is called "border". The border property can be set on classes, ids or directly on the HTML element.

This example shows the color as border, it can be applied via the CSS property "border" or "border-color".

```
.border, #border, table{ border:4px solid rgb(176, 137, 98) }
```

If only the border color should be changed use the property `border-color`.

```
.border{ border-color:rgb(176, 137, 98) }
```

If you want to add a box shadow in that color use:

Here you see how a box with a 4 pixel `rgb(176, 137, 98)` colored shadow looks like.

```
.boxshadow{ -moz-box-shadow:4px 4px 4px  
4px rgb(176, 137, 98); -webkit-box-  
shadow:4px 4px 4px 4px rgb(176, 137, 98);  
box-shadow:4px 4px 4px 4px rgb(176, 137,  
98) }
```

Background

The CSS property to change the background color of an element to CIELCh 60, 28.293, 69.951 is called "background". The background property can be set on classes, ids or directly on the HTML element.

```
.background, #background, body{  
background: rgb(176, 137, 98) }
```

If only the background color should be changed can be used:

```
.background{ background-color: rgb(176,  
137, 98) }
```

This example shows the color as background, it is applied via the CSS property "background".

To optimize and compress your CSS code, you can use our [online CSS compressor and optimizer](#) based on csstidy. If you want to create a linear or radial gradient as background or border, check our [CSS Gradient Generator](#).

Hey! You found this booklet interesting? Support Converting Colors with the new Membership Option!

The pro membership hides all ads, plus gives you double the colors in the color bucket, and more awesome pro features!

[Learn more, Memberships starting at \\$2.50/m!](#)

**Follow me
on Twitter!**

@ConvertingColor