

Converting Colors

CIELCh(60, 30.538, 28.794)

Have a look what the booklet for
CIELCh(60, 30.538, 28.794) contains.

CIELCh(60, 30.618, 28.820)	3
<i>Conversions</i>	4
<i>Details</i>	6
<i>Harmonies</i>	11
<i>Previews</i>	20
<i>Color Blindness Simulation</i>	23
<i>CSS Examples</i>	26

Color

CIELCh(60, 30.618, 28.820)

Conversions

Conversions Part 1

Format	Color
Hex	C57E78
RGB	197, 126, 120
RGB Percent	77%, 49%, 47%
CMY	0.2277, 0.5061, 0.5296
CMYK	0.00, 0.36, 0.39, 0.23
HSL	5°, 40%, 62%
HSV	5°, 39%, 77%
XYZ	33.8496, 28.1233, 21.3957
YIQ	146.5450, 44.2420, 13.1860

Conversions

Conversions Part 2

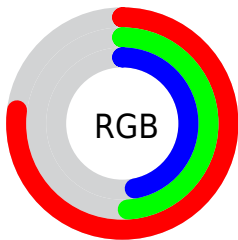
Format	Color
R_{YB}	197, 127, 120
Decimal	12942968
CIE Lab	60.00, 26.83, 14.76
CIE LCh	60, 30.618, 28.820
Yxy	28.1233, 0.4060, 0.3373
Android (android.graphics.Color)	4291133048 (0xFFC57E78)
YUV	146.5450, -13.0867, 44.2490
Hunter-Lab	53.0314, 21.1301, 13.2013

Details

The CIELCh color **60, 30.618, 28.820** is a dark color, and the websafe version is hex **CC9999**. A complement of this color would be **73, 22.997, 205.934**, and the grayscale version is **61, 0.008, 296.813**.

A 20% lighter version of the original color is **80, 30.544, 28.749**, and **40, 30.594, 28.458** is the 20% darker color. If you saturate the color by 10%, you get **56, 39.883, 30.082**, and if you desaturate by 10%, it is **65, 21.906, 27.886**.

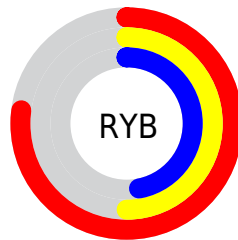
Distribution



Red (77%)

Green (49%)

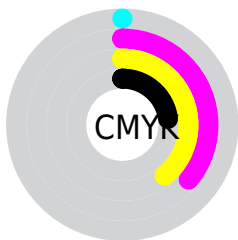
Blue (47%)



Red (77%)

Yellow (50%)

Blue (47%)

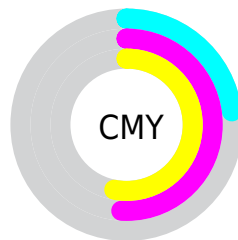


Cyan (0%)

Magenta (36%)

Yellow (39%)

Black (23%)



Cyan (23%)

Magenta (51%)

Yellow (53%)

Brightness & Saturation Gradients

These gradients show how the CIELCh color 60, 30.618, 28.820 changes by changing the brightness by 10 percent. The first figure shows a shift by +10% for each color and the second figure -10%.

Similar to the brightness gradients but the following saturation gradients show a change of the CIELCh color 60, 30.618, 28.820 by changing the saturation by 10% instead.

60, 30.618, 28.820

60, 30.618, 28.820

100, 30.618,
28.820

50, 30.618, 28.820

80, 30.618, 28.820

40, 30.618, 28.820

90, 30.618, 28.820

30, 30.618, 28.820

20, 30.618, 28.820

10, 30.618, 28.820

0, 30.618, 28.820

60, 30.618, 28.820

60, 30.618, 28.820

56, 39.883, 30.082

65, 21.906, 27.886

51, 49.584, 31.733

70, 13.804, 27.193

■ 48, 59.491, 33.819

■ 75, 6.311, 26.660

■ 45, 69.212, 36.268

■ 80, 0.603, 207.319

■ 43, 77.949, 38.711

■ 85, 6.987, 206.255

■ 42, 84.439, 40.579

■ 91, 12.894,
206.071

■ 42, 84.990, 40.801

■ 96, 18.388,
201.422

■ 96, 19.031,
198.249

Harmonies

Complementary

The Complementary color scheme is a pair of colors which are on the opposite of each other on the color wheel.



60, 30.618, 28.820



73, 22.997, 205.934

Rectangle

The Rectangle color scheme consists of four colors that form a rectangle on the color wheel.



60, 30.618, 28.820



60, 30.618, 78.820



60, 30.618, 208.820



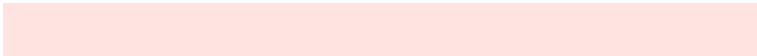
60, 30.618, 258.820

Sweetspot

The Sweet Spot groups the original color and five complimentary colors.



60, 30.616, 28.824



92, 10.401, 26.815



61, 48.054, 328.480



48, 6.937, 26.884



0, 0.000, 0.000



53, 0.007, 296.813

Same Dimension

The Same Dimension uses a secret algorithm to generate beautiful new colors.



60, 30.616, 28.824



72, 46.866, 29.888



69, 27.940, 77.159



39, 3.972, 26.675



34, 73.572, 40.827



4, 15.140, 23.655

Inverse Universe

The Inverse Universe completely reimagines the original color for something new.



73, 22.997, 205.934



91, 32.652, 206.051



62, 26.175, 268.993



41, 3.739, 206.272



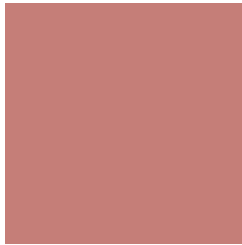
57, 32.601, 209.724



11, 12.006, 206.533

Previews

White Background



This preview shows how the CIELCh color 60, 30.618, 28.820 looks on a white background.

Color Contrast Check

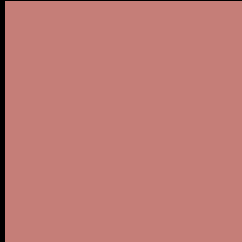
Large Text (above 18pt) WCAG AA ✓ Pass

Any Text WCAG AA ✗ Fail

Large Text (above 18pt) WCAG AAA ✗ Fail

Any Text WCAG AAA ✗ Fail

Black Background



This preview shows how the CIE LCh color 60, 30.618, 28.820 looks on a black background.

Color Contrast Check

Large Text (above 18pt) WCAG AA ✓ Pass

Any Text WCAG AA ✓ Pass

Large Text (above 18pt) WCAG AAA ✓ Pass

Any Text WCAG AAA × Fail

If you want to check with other color combinations, try the [Color Contrast Checker](#).

CIELCh 60, 30.618, 28.820

Background



This preview shows how black text looks on a background with the CIELCh color 60, 30.618, 28.820.



This preview shows how white text looks on a background with the CIELCh color 60, 30.618, 28.820.

Color Blindness Simulation

Color vision deficiency is a very complex topic, and I could not describe the different causes any better than Wikipedia does, so if you want to learn more, you should check out their [article about color blindness](#).

Dichromacy



Original Color
60, 30.618, 28.820

Protanopia
60, 9.304, 93.942

Deuteranopia
60, 17.197, 63.163



Tritanopia
60, 30.780, 13.684

Trichromacy



Original Color
60, 30.618, 28.820

Protanomaly
60, 14.288, 48.434

Deuteranomaly
60, 21.159, 44.332

Tritanomaly
60, 30.517, 19.730

Monochromacy



Original Color
60, 30.618, 28.820

Achromatopsia
61, 0.008, 296.813

Achromatomaly
60, 10.581, 26.474

CSS Examples

Text

The CSS property to change the color of the text to CIELCh 60, 30.618, 28.820 is called "color". The color property can be set on classes, ids or directly on the HTML element.

This example shows how text in the color `rgb(197, 126, 120)` looks like.

```
.text, #text, p{  
    color:rgb(197, 126, 120)  
}
```

If you want to add a text shadow in that color use the text-shadow property, you can generate a text shadow directly with our [CSS Text Shadow Generator](#).

Here you see how black text with a 4 pixel rgb(197, 126, 120) colored shadow looks like.

```
.shadow{ text-shadow: 4px 4px 2px rgb(197, 126, 120) }
```

Border

The CSS property to change the border of an element to CIELCh 60, 30.618, 28.820 is called "border". The border property can be set on classes, ids or directly on the HTML element.

This example shows the color as border, it can be applied via the CSS property "border" or "border-color".

```
.border, #border, table{ border:4px solid rgb(197, 126, 120) }
```

If only the border color should be changed use the property `border-color`.

```
.border{ border-color:rgb(197, 126, 120) }
```

If you want to add a box shadow in that color use:

Here you see how a box with a 4 pixel `rgb(197, 126, 120)` colored shadow looks like.

```
.boxshadow{ -moz-box-shadow:4px 4px 4px  
4px rgb(197, 126, 120); -webkit-box-  
shadow:4px 4px 4px 4px rgb(197, 126, 120);  
box-shadow:4px 4px 4px 4px rgb(197, 126,  
120) }
```

Background

The CSS property to change the background color of an element to CIELCh 60, 30.618, 28.820 is called "background". The background property can be set on classes, ids or directly on the HTML element.

```
.background, #background, body{  
background: rgb(197, 126, 120) }
```

If only the background color should be changed can be used:

```
.background{ background-color: rgb(197,  
126, 120) }
```

This example shows the color as background, it is applied via the CSS property "background".

To optimize and compress your CSS code, you can use our [online CSS compressor and optimizer](#) based on csstidy. If you want to create a linear or radial gradient as background or border, check our [CSS Gradient Generator](#).

Hey! You found this booklet interesting? Support Converting Colors with the new Membership Option!

The pro membership hides all ads, plus gives you double the colors in the color bucket, and more awesome pro features!

[Learn more, Memberships starting at \\$2.50/m!](#)

**Follow me
on Twitter!**

@ConvertingColor