

Converting Colors

CIELCh(60, 32.850, 24.550)

Have a look what the booklet for
CIELCh(60, 32.850, 24.550) contains.

CIELCh(60, 32.746, 24.930)	3
<i>Conversions</i>	4
<i>Details</i>	6
<i>Harmonies</i>	11
<i>Previews</i>	20
<i>Color Blindness Simulation</i>	23
<i>CSS Examples</i>	26

Color

CIELCh(60, 32.746, 24.930)

Conversions

Conversions Part 1

Format	Color
Hex	C97C7A
RGB	201, 124, 122
RGB Percent	79%, 49%, 48%
CMY	0.2129, 0.5148, 0.5226
CMYK	0.00, 0.38, 0.39, 0.21
HSL	2°, 42%, 63%
HSV	2°, 39%, 79%
XYZ	34.6783, 28.1233, 21.9283
YIQ	146.7950, 46.5340, 15.7020

Conversions

Conversions Part 2

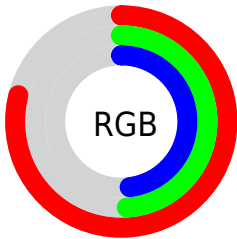
Format	Color
RYB	201, 124, 122
Decimal	13204602
CIELab	60.00, 29.69, 13.80
CIELCh	60, 32.746, 24.930
Yxy	28.1233, 0.4093, 0.3319
Android (android.graphics.Color)	4291394682 (0xFFC97C7A)
YUV	146.7950, -12.2239, 47.5378
Hunter-Lab	53.0314, 23.9198, 12.6058

Details

The CIELCh color **60, 32.746, 24.930** is a dark color, and the websafe version is hex **CC6666**. A complement of this color would be **75, 24.705, 200.118**, and the grayscale version is **61, 0.008, 296.813**.

A 20% lighter version of the original color is **79, 30.954, 24.905**, and **40, 32.524, 25.600** is the 20% darker color. If you saturate the color by 10%, you get **55, 42.451, 26.556**, and if you desaturate by 10%, it is **65, 23.535, 23.697**.

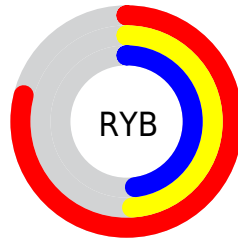
Distribution



Red (79%)

Green (49%)

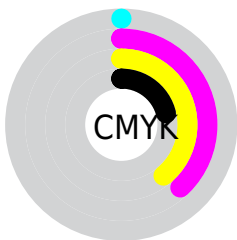
Blue (48%)



Red (79%)

Yellow (49%)

Blue (48%)

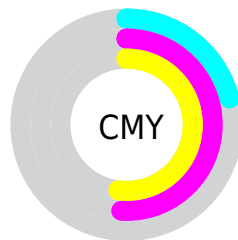


Cyan (0%)

Magenta (38%)

Yellow (39%)

Black (21%)



Cyan (21%)

Magenta (51%)

Yellow (52%)

Brightness & Saturation Gradients

These gradients show how the CIELCh color 60, 32.746, 24.930 changes by changing the brightness by 10 percent. The first figure shows a shift by +10% for each color and the second figure -10%.

Similar to the brightness gradients but the following saturation gradients show a change of the CIELCh color 60, 32.746, 24.930 by changing the saturation by 10% instead.

60, 32.746, 24.930

60, 32.746, 24.930

100, 32.746,
24.930

50, 32.746, 24.930

80, 32.746, 24.930

40, 32.746, 24.930

90, 32.746, 24.930

30, 32.746, 24.930

20, 32.746, 24.930

10, 32.746, 24.930

0, 32.746, 24.930

60, 32.746, 24.930

60, 32.746, 24.930

55, 42.451, 26.556

65, 23.535, 23.697

51, 52.475, 28.659

70, 14.920, 22.752

■ 48, 62.531, 31.308

■ 76, 6.925, 22.002

■ 45, 72.188, 34.428

■ 81, 0.467, 202.733

■ 43, 80.628, 37.580

■ 87, 7.298, 201.207

■ 42, 86.597, 40.057

■ 92, 13.621,
200.855

■ 42, 86.977, 40.240

■ 96, 17.886,
198.321

Harmonies

Complementary

The Complementary color scheme is a pair of colors which are on the opposite of each other on the color wheel.



60, 32.746, 24.930



75, 24.705, 200.118

Rectangle

The Rectangle color scheme consists of four colors that form a rectangle on the color wheel.



60, 32.746, 24.930



60, 32.746, 74.930



60, 32.746, 204.930



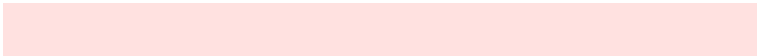
60, 32.746, 254.930

Sweetspot

The Sweet Spot groups the original color and five complimentary colors.



60, 32.744, 24.934



92, 10.925, 22.202



62, 50.765, 327.006



48, 7.285, 22.298



0, 0.000, 0.000



53, 0.007, 296.813

Same Dimension

The Same Dimension uses a secret algorithm to generate beautiful new colors.



60, 32.744, 24.934



70, 48.854, 26.252



69, 27.848, 72.218



39, 4.173, 22.004



34, 74.297, 40.113



4, 15.634, 20.740

Inverse Universe

The Inverse Universe completely reimagines the original color for something new.



75, 24.705, 200.118



93, 34.385, 199.943



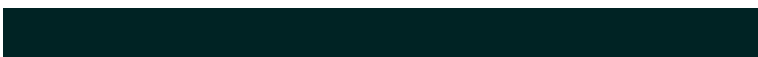
65, 25.203, 263.956



41, 3.932, 201.224



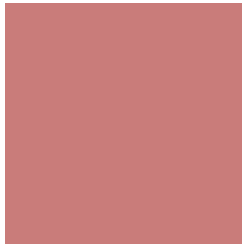
59, 34.655, 200.389



11, 12.631, 199.480

Previews

White Background



This preview shows how the CIELCh color 60, 32.746, 24.930 looks on a white background.

Color Contrast Check

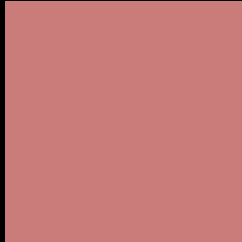
Large Text (above 18pt) WCAG AA ✓ Pass

Any Text WCAG AA ✗ Fail

Large Text (above 18pt) WCAG AAA ✗ Fail

Any Text WCAG AAA ✗ Fail

Black Background



This preview shows how the CIE LCh color 60, 32.746, 24.930 looks on a black background.

Color Contrast Check

Large Text (above 18pt) WCAG AA ✓ Pass

Any Text WCAG AA ✓ Pass

Large Text (above 18pt) WCAG AAA ✓ Pass

Any Text WCAG AAA × Fail

If you want to check with other color combinations, try the [Color Contrast Checker](#).

CIELCh 60, 32.746, 24.930

Background



This preview shows how black text looks on a background with the CIELCh color 60, 32.746, 24.930.



This preview shows how white text looks on a background with the CIELCh color 60, 32.746, 24.930.

Color Blindness Simulation

Color vision deficiency is a very complex topic, and I could not describe the different causes any better than Wikipedia does, so if you want to learn more, you should check out their [article about color blindness](#).

Dichromacy





Tritanopia
60, 33.338, 14.769

Trichromacy



Original Color
60, 32.746, 24.930

Protanomaly
60, 14.275, 41.221

Deuteranomaly
60, 21.476, 40.925

Tritanomaly
60, 33.022, 18.421

Monochromacy



Original Color
60, 32.746, 24.930

Achromatopsia
61, 0.008, 296.813

Achromatomaly
60, 11.332, 23.328

CSS Examples

Text

The CSS property to change the color of the text to CIELCh 60, 32.746, 24.930 is called "color". The color property can be set on classes, ids or directly on the HTML element.

This example shows how text in the color `rgb(201, 124, 122)` looks like.

```
.text, #text, p{  
    color:rgb(201, 124, 122)  
}
```

If you want to add a text shadow in that color use the text-shadow property, you can generate a text shadow directly with our [CSS Text Shadow Generator](#).

Here you see how black text with a 4 pixel rgb(201, 124, 122) colored shadow looks like.

```
.shadow{ text-shadow: 4px 4px 2px rgb(201, 124, 122) }
```

Border

The CSS property to change the border of an element to CIELCh 60, 32.746, 24.930 is called "border". The border property can be set on classes, ids or directly on the HTML element.

This example shows the color as border, it can be applied via the CSS property "border" or "border-color".

```
.border, #border, table{ border:4px solid rgb(201, 124, 122) }
```

If only the border color should be changed use the property `border-color`.

```
.border{ border-color:rgb(201, 124, 122) }
```

If you want to add a box shadow in that color use:

Here you see how a box with a 4 pixel `rgb(201, 124, 122)` colored shadow looks like.

```
.boxshadow{ -moz-box-shadow:4px 4px 4px  
4px rgb(201, 124, 122); -webkit-box-  
shadow:4px 4px 4px 4px rgb(201, 124, 122);  
box-shadow:4px 4px 4px 4px rgb(201, 124,  
122) }
```

Background

The CSS property to change the background color of an element to CIELCh 60, 32.746, 24.930 is called "background". The background property can be set on classes, ids or directly on the HTML element.

```
.background, #background, body{  
background: rgb(201, 124, 122) }
```

If only the background color should be changed can be used:

```
.background{ background-color: rgb(201,  
124, 122) }
```

This example shows the color as background, it is applied via the CSS property "background".

To optimize and compress your CSS code, you can use our [online CSS compressor and optimizer](#) based on csstidy. If you want to create a linear or radial gradient as background or border, check our [CSS Gradient Generator](#).

Hey! You found this booklet interesting? Support Converting Colors with the new Membership Option!

The pro membership hides all ads, plus gives you double the colors in the color bucket, and more awesome pro features!

[Learn more, Memberships starting at \\$2.50/m!](#)

**Follow me
on Twitter!**

@ConvertingColor