

Converting Colors

CIELCh(60, 35.361, 57.455)

Have a look what the booklet for
CIELCh(60, 35.361, 57.455) contains.

CIELCh(60, 35.217, 57.723)	3
<i>Conversions</i>	4
<i>Details</i>	6
<i>Harmonies</i>	11
<i>Previews</i>	20
<i>Color Blindness Simulation</i>	23
<i>CSS Examples</i>	26

Color

CIELCh(60, 35.217, 57.723)

Conversions

Conversions Part 1

Format	Color
Hex	BF835D
RGB	191, 131, 93
RGB Percent	75%, 51%, 36%
CMY	0.2507, 0.4860, 0.6351
CMYK	0.00, 0.31, 0.51, 0.25
HSL	23°, 43%, 56%
HSV	23°, 51%, 75%
XYZ	31.6034, 28.1233, 14.1311
YIQ	144.6080, 47.9580, 0.9020

Conversions

Conversions Part 2

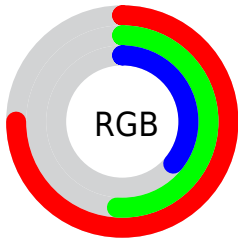
Format	Color
RYB	191, 155, 93
Decimal	12551005
CIELab	60.00, 18.81, 29.78
CIElCh	60, 35.217, 57.723
Yxy	28.1233, 0.4279, 0.3808
Android (android.graphics.Color)	4290741085 (0xFFBF835D)
YUV	144.6080, -25.4427, 40.6858
Hunter-Lab	53.0314, 13.5698, 21.3232

Details

The CIELCh color **60, 35.217, 57.723** is a dark color, and the websafe version is hex **CC9966**. A complement of this color would be **61, 27.128, 251.096**, and the grayscale version is **60, 0.008, 296.813**.

A 20% lighter version of the original color is **80, 35.270, 57.300**, and **40, 35.396, 57.235** is the 20% darker color. If you saturate the color by 10%, you get **57, 43.395, 56.944**, and if you desaturate by 10%, it is **63, 27.436, 58.551**.

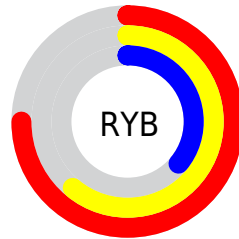
Distribution



Red (75%)

Green (51%)

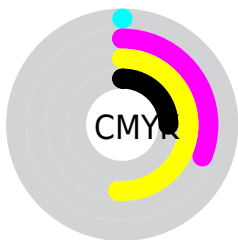
Blue (36%)



Red (75%)

Yellow (61%)

Blue (36%)

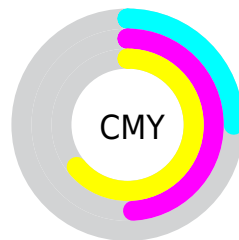


Cyan (0%)

Magenta (31%)

Yellow (51%)

Black (25%)



Cyan (25%)

Magenta (49%)

Yellow (64%)

Brightness & Saturation Gradients

These gradients show how the CIELCh color 60, 35.217, 57.723 changes by changing the brightness by 10 percent. The first figure shows a shift by +10% for each color and the second figure -10%.

Similar to the brightness gradients but the following saturation gradients show a change of the CIELCh color 60, 35.217, 57.723 by changing the saturation by 10% instead.

60, 35.217, 57.723

60, 35.217, 57.723

100, 35.217,
57.723

50, 35.217, 57.723

80, 35.217, 57.723

40, 35.217, 57.723

90, 35.217, 57.723

30, 35.217, 57.723

20, 35.217, 57.723

10, 35.217, 57.723

0, 35.217, 57.723

60, 35.217, 57.723

60, 35.217, 57.723

57, 43.395, 56.944

63, 27.436, 58.551

54, 51.805, 56.151

67, 20.110, 59.422

51, 60.059, 55.214

70, 13.239, 60.332

49, 67.364, 53.831

73, 6.798, 61.254

47, 72.573, 52.252

77, 0.751, 61.707

80, 4.942, 243.354

84, 10.322,
244.279

88, 15.426,
245.222

91, 17.300,
232.837

Harmonies

Complementary

The Complementary color scheme is a pair of colors which are on the opposite of each other on the color wheel.



60, 35.217, 57.723



61, 27.128, 251.096

Rectangle

The Rectangle color scheme consists of four colors that form a rectangle on the color wheel.



60, 35.217, 57.723



60, 35.217, 107.723



60, 35.217, 237.723



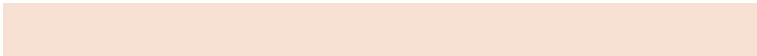
60, 35.217, 287.723

Sweetspot

The Sweet Spot groups the original color and five complimentary colors.



60, 35.216, 57.728



91, 11.276, 60.893



53, 48.911, 342.448



48, 7.810, 60.695



99, 0.012, 296.813



52, 0.007, 296.813

Same Dimension

The Same Dimension uses a secret algorithm to generate beautiful new colors.



60, 35.216, 57.728



72, 54.395, 56.813



72, 45.809, 99.444



38, 3.355, 61.428



39, 62.785, 52.808



5, 10.096, 47.944

Inverse Universe

The Inverse Universe completely reimagines the original color for something new.



61, 27.128, 251.096



73, 39.144, 254.618



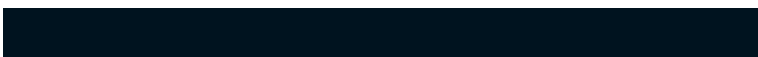
47, 51.064, 293.088



38, 3.229, 243.491



40, 39.859, 269.965



5, 10.347, 257.257

Previews

White Background



This preview shows how the CIELCh color 60, 35.217, 57.723 looks on a white background.

Color Contrast Check

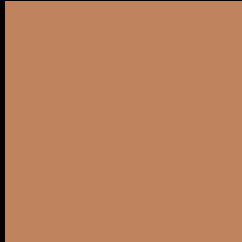
Large Text (above 18pt) WCAG AA ✓ Pass

Any Text WCAG AA × Fail

Large Text (above 18pt) WCAG AAA × Fail

Any Text WCAG AAA × Fail

Black Background



This preview shows how the CIELCh color 60, 35.217, 57.723 looks on a black background.

Color Contrast Check

Large Text (above 18pt) WCAG AA ✓ Pass

Any Text WCAG AA ✓ Pass

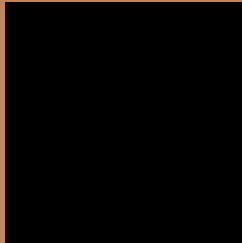
Large Text (above 18pt) WCAG AAA ✓ Pass

Any Text WCAG AAA × Fail

If you want to check with other color combinations, try the [Color Contrast Checker](#).

CIELCh 60, 35.217, 57.723

Background



This preview shows how black text looks on a background with the CIELCh color 60, 35.217, 57.723.



This preview shows how white text looks on a background with the CIELCh color 60, 35.217, 57.723.

Color Blindness Simulation

Color vision deficiency is a very complex topic, and I could not describe the different causes any better than Wikipedia does, so if you want to learn more, you should check out their [article about color blindness](#).

Dichromacy



Original Color

60, 35.217, 57.723

Protanopia

60, 26.181, 95.704

Deuteranopia

60, 30.999, 74.880



Tritanopia
60, 28.237, 12.479

Trichromacy



Original Color
60, 35.217, 57.723

Protanomaly
60, 27.507, 79.590

Deuteranomaly
60, 32.325, 67.638

Tritanomaly
60, 28.266, 31.257

Monochromacy



Original Color
60, 35.217, 57.723

Achromatopsia
60, 0.008, 296.813

Achromatomaly
60, 12.105, 60.397

CSS Examples

Text

The CSS property to change the color of the text to CIELCh 60, 35.217, 57.723 is called "color". The color property can be set on classes, ids or directly on the HTML element.

This example shows how text in the color `rgb(191, 131, 93)` looks like.

```
.text, #text, p{  
    color:rgb(191, 131, 93)  
}
```

If you want to add a text shadow in that color use the text-shadow property, you can generate a text shadow directly with our [CSS Text Shadow Generator](#).

Here you see how black text with a 4 pixel rgb(191, 131, 93) colored shadow looks like.

```
.shadow{ text-shadow: 4px 4px 2px rgb(191, 131, 93) }
```

Border

The CSS property to change the border of an element to CIELCh 60, 35.217, 57.723 is called "border". The border property can be set on classes, ids or directly on the HTML element.

This example shows the color as border, it can be applied via the CSS property "border" or "border-color".

```
.border, #border, table{ border:4px solid rgb(191, 131, 93) }
```

If only the border color should be changed use the property `border-color`.

```
.border{ border-color:rgb(191, 131, 93) }
```

If you want to add a box shadow in that color use:

Here you see how a box with a 4 pixel `rgb(191, 131, 93)` colored shadow looks like.

```
.boxshadow{ -moz-box-shadow:4px 4px 4px  
4px rgb(191, 131, 93); -webkit-box-  
shadow:4px 4px 4px 4px rgb(191, 131, 93);  
box-shadow:4px 4px 4px 4px rgb(191, 131,  
93) }
```

Background

The CSS property to change the background color of an element to CIELCh 60, 35.217, 57.723 is called "background". The background property can be set on classes, ids or directly on the HTML element.

```
.background, #background, body{  
background: rgb(191, 131, 93) }
```

If only the background color should be changed can be used:

```
.background{ background-color: rgb(191,  
131, 93) }
```

This example shows the color as background, it is applied via the CSS property "background".

To optimize and compress your CSS code, you can use our [online CSS compressor and optimizer](#) based on csstidy. If you want to create a linear or radial gradient as background or border, check our [CSS Gradient Generator](#).

Hey! You found this booklet interesting? Support Converting Colors with the new Membership Option!

The pro membership hides all ads, plus gives you double the colors in the color bucket, and more awesome pro features!

[Learn more, Memberships starting at \\$2.50/m!](#)

**Follow me
on Twitter!**

@ConvertingColor