

Converting Colors

CIELCh(60, 35.631, 56.291)

Have a look what the booklet for
CIELCh(60, 35.631, 56.291) contains.

CIELCh(60, 35.631, 56.291)	3
<i>Conversions</i>	4
<i>Details</i>	6
<i>Harmonies</i>	11
<i>Previews</i>	20
<i>Color Blindness Simulation</i>	23
<i>CSS Examples</i>	26

Color

CIELCh(60, 35.631, 56.291)

Conversions

Conversions Part 1

Format	Color
Hex	C0825D
RGB	192, 130, 93
RGB Percent	75%, 51%, 36%
CMY	0.2454, 0.4887, 0.6339
CMYK	0.00, 0.32, 0.51, 0.25
HSL	22°, 44%, 56%
HSV	22°, 51%, 75%
XYZ	31.8691, 28.1233, 14.1876
YIQ	144.3200, 48.8290, 1.6370

Conversions

Conversions Part 2

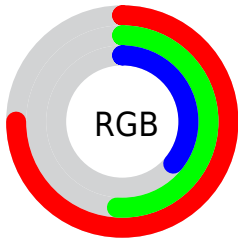
Format	Color
RYB	192, 152, 93
Decimal	12616285
CIELab	60.00, 19.77, 29.64
CIElCh	60, 35.631, 56.291
Yxy	28.1233, 0.4296, 0.3791
Android (android.graphics.Color)	4290806365 (0xFFC0825D)
YUV	144.3200, -25.3008, 41.8154
Hunter-Lab	53.0314, 14.4641, 21.2600

Details

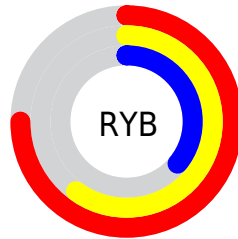
The CIELCh color **60, 35.631, 56.291** is a dark color, and the websafe version is hex **CC9966**. The color can be described as middle muted orange. A complement of this color would be **61, 27.046, 249.181**, and the grayscale version is **60, 0.008, 296.813**.

A 20% lighter version of the original color is **80, 35.645, 55.930**, and **40, 35.475, 56.190** is the 20% darker color. If you saturate the color by 10%, you get **57, 43.925, 55.601**, and if you desaturate by 10%, it is **63, 27.753, 57.041**.

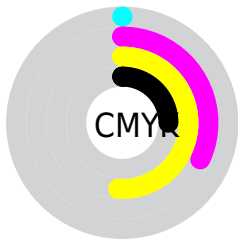
Distribution



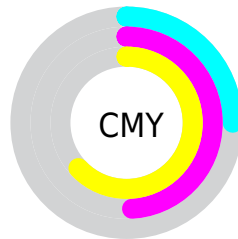
- Red (75%)
- Green (51%)
- Blue (36%)



- Red (75%)
- Yellow (60%)
- Blue (36%)



- Cyan (0%)
- Magenta (32%)
- Yellow (51%)
- Black (25%)



- Cyan (25%)
- Magenta (49%)
- Yellow (63%)

Brightness & Saturation Gradients

These gradients show how the CIELCh color 60, 35.631, 56.291 changes by changing the brightness by 10 percent. The first figure shows a shift by +10% for each color and the second figure -10%.

Similar to the brightness gradients but the following saturation gradients show a change of the CIELCh color 60, 35.631, 56.291 by changing the saturation by 10% instead.

60, 35.631, 56.291

60, 35.631, 56.291

100, 35.631,
56.291

50, 35.631, 56.291

80, 35.631, 56.291

40, 35.631, 56.291

90, 35.631, 56.291

30, 35.631, 56.291

20, 35.631, 56.291

10, 35.631, 56.291

0, 35.631, 56.291

60, 35.631, 56.291

60, 35.631, 56.291

57, 43.925, 55.601

63, 27.753, 57.041

54, 52.472, 54.907

67, 20.350, 57.845

51, 60.876, 54.078

70, 13.420, 58.696

49, 68.323, 52.801

74, 6.937, 59.566

47, 73.538, 51.353

77, 0.863, 60.036

81, 4.844, 241.586

85, 10.226,
242.473

88, 15.322,
243.384

92, 17.001,
228.224

Harmonies

Complementary

The Complementary color scheme is a pair of colors which are on the opposite of each other on the color wheel.



60, 35.631, 56.291



61, 27.046, 249.181

Rectangle

The Rectangle color scheme consists of four colors that form a rectangle on the color wheel.



60, 35.631, 56.291



60, 35.631, 106.291



60, 35.631, 236.291



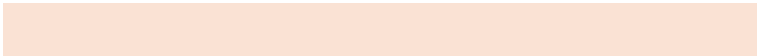
60, 35.631, 286.291

Sweetspot

The Sweet Spot groups the original color and five complimentary colors.



60, 35.630, 56.296



92, 11.346, 59.240



54, 49.858, 341.596



48, 7.795, 59.055



99, 0.012, 296.813



52, 0.007, 296.813

Same Dimension

The Same Dimension uses a secret algorithm to generate beautiful new colors.



60, 35.630, 56.296



72, 55.014, 55.498



72, 45.576, 98.460



39, 3.421, 59.745



39, 64.041, 51.868



5, 11.612, 45.241

Inverse Universe

The Inverse Universe completely reimagines the original color for something new.



61, 27.046, 249.181



74, 38.885, 252.600



48, 50.528, 292.380



39, 3.285, 241.735



41, 39.280, 267.961



6, 11.222, 256.014

Previews

White Background



This preview shows how the CIELCh color 60, 35.631, 56.291 looks on a white background.

Color Contrast Check

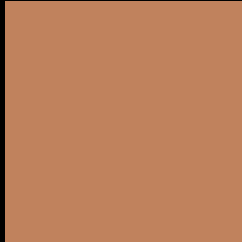
Large Text (above 18pt) WCAG AA ✓ Pass

Any Text WCAG AA × Fail

Large Text (above 18pt) WCAG AAA × Fail

Any Text WCAG AAA × Fail

Black Background



This preview shows how the CIELCh color 60, 35.631, 56.291 looks on a black background.

Color Contrast Check

Large Text (above 18pt) WCAG AA ✓ Pass

Any Text WCAG AA ✓ Pass

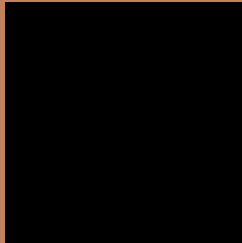
Large Text (above 18pt) WCAG AAA ✓ Pass

Any Text WCAG AAA × Fail

If you want to check with other color combinations, try the [Color Contrast Checker](#).

CIELCh 60, 35.631, 56.291

Background



This preview shows how black text looks on a background with the CIELCh color 60, 35.631, 56.291.



This preview shows how white text looks on a background with the CIELCh color 60, 35.631, 56.291.

Color Blindness Simulation

Color vision deficiency is a very complex topic, and I could not describe the different causes any better than Wikipedia does, so if you want to learn more, you should check out their [article about color blindness](#).

Dichromacy



Original Color

60, 35.631, 56.291

Protanopia

60, 26.181, 95.704

Deuteranopia

60, 30.999, 74.880



Tritanopia
60, 29.506, 13.098

Trichromacy



Original Color
60, 35.631, 56.291

Protanomaly
60, 27.733, 78.789

Deuteranomaly
60, 32.325, 67.638

Tritanomaly
60, 29.607, 31.002

Monochromacy



Original Color
60, 35.631, 56.291

Achromatopsia
60, 0.008, 296.813

Achromatomaly
60, 12.105, 60.397

CSS Examples

Text

The CSS property to change the color of the text to CIELCh 60, 35.631, 56.291 is called "color". The color property can be set on classes, ids or directly on the HTML element.

This example shows how text in the color `rgb(192, 130, 93)` looks like.

```
.text, #text, p{  
    color:rgb(192, 130, 93)  
}
```

If you want to add a text shadow in that color use the text-shadow property, you can generate a text shadow directly with our [CSS Text Shadow Generator](#).

Here you see how black text with a 4 pixel rgb(192, 130, 93) colored shadow looks like.

```
.shadow{ text-shadow: 4px 4px 2px rgb(192, 130, 93) }
```

Border

The CSS property to change the border of an element to CIELCh 60, 35.631, 56.291 is called "border". The border property can be set on classes, ids or directly on the HTML element.

This example shows the color as border, it can be applied via the CSS property "border" or "border-color".

```
.border, #border, table{ border:4px solid rgb(192, 130, 93) }
```

If only the border color should be changed use the property border-color.

```
.border{ border-color:rgb(192, 130, 93) }
```

If you want to add a box shadow in that color use:

Here you see how a box with a 4 pixel rgb(192, 130, 93) colored shadow looks like.

```
.boxshadow{ -moz-box-shadow:4px 4px 4px  
4px rgb(192, 130, 93); -webkit-box-  
shadow:4px 4px 4px 4px rgb(192, 130, 93);  
box-shadow:4px 4px 4px 4px rgb(192, 130,  
93) }
```

Background

The CSS property to change the background color of an element to CIELCh 60, 35.631, 56.291 is called "background". The background property can be set on classes, ids or directly on the HTML element.

```
.background, #background, body{  
background: rgb(192, 130, 93) }
```

If only the background color should be changed can be used:

```
.background{ background-color: rgb(192,  
130, 93) }
```

This example shows the color as background, it is applied via the CSS property "background".

To optimize and compress your CSS code, you can use our [online CSS compressor and optimizer](#) based on csstidy. If you want to create a linear or radial gradient as background or border, check our [CSS Gradient Generator](#).

Hey! You found this booklet interesting? Support Converting Colors with the new Membership Option!

The pro membership hides all ads, plus gives you double the colors in the color bucket, and more awesome pro features!

[Learn more, Memberships starting at \\$2.50/m!](#)

**Follow me
on Twitter!**

@ConvertingColor