

Converting Colors

CIELCh(60, 36.428, 59.421)

Have a look what the booklet for
CIELCh(60, 36.428, 59.421) contains.

CIELCh(60, 36.428, 59.421)	3
<i>Conversions</i>	4
<i>Details</i>	6
<i>Harmonies</i>	11
<i>Previews</i>	20
<i>Color Blindness Simulation</i>	23
<i>CSS Examples</i>	26

Color

CIELCh(60, 36.428, 59.421)

Conversions

Conversions Part 1

Format	Color
Hex	BF835A
RGB	191, 131, 90
RGB Percent	75%, 51%, 35%
CMY	0.2502, 0.4856, 0.6464
CMYK	0.00, 0.31, 0.53, 0.25
HSL	24°, 44%, 55%
HSV	24°, 53%, 75%
XYZ	31.5283, 28.1233, 13.4771
YIQ	144.2660, 48.9210, -0.0310

Conversions

Conversions Part 2

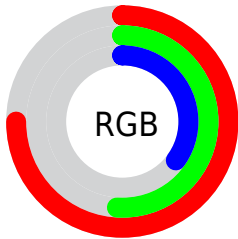
Format	Color
R_{YB}	191, 159, 90
Decimal	12551002
CIE _{Lab}	60.00, 18.53, 31.36
CIE _{LCh}	60, 36.428, 59.421
Yxy	28.1233, 0.4311, 0.3846
Android (android.graphics.Color)	4290741082 (0xFFBF835A)
YUV	144.2660, -26.7531, 40.9857
Hunter-Lab	53.0314, 13.3171, 22.0544

Details

The CIELCh color **60, 36.428, 59.421** is a dark color, and the websafe version is hex **CC9966**. A complement of this color would be **60, 28.326, 254.011**, and the grayscale version is **60, 0.008, 296.813**.

A 20% lighter version of the original color is **80, 36.392, 58.999**, and **40, 36.274, 59.334** is the 20% darker color. If you saturate the color by 10%, you get **57, 44.580, 58.536**, and if you desaturate by 10%, it is **63, 28.629, 60.336**.

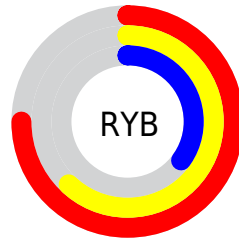
Distribution



Red (75%)

Green (51%)

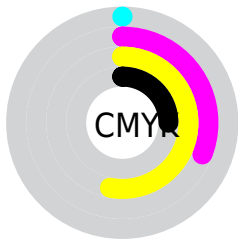
Blue (35%)



Red (75%)

Yellow (62%)

Blue (35%)

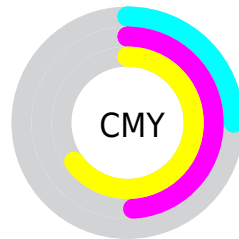


Cyan (0%)

Magenta (31%)

Yellow (53%)

Black (25%)



Cyan (25%)

Magenta (49%)

Yellow (65%)

Brightness & Saturation Gradients

These gradients show how the CIELCh color 60, 36.428, 59.421 changes by changing the brightness by 10 percent. The first figure shows a shift by +10% for each color and the second figure -10%.

Similar to the brightness gradients but the following saturation gradients show a change of the CIELCh color 60, 36.428, 59.421 by changing the saturation by 10% instead.

60, 36.428, 59.421

60, 36.428, 59.421

100, 36.428,
59.421

50, 36.428, 59.421

80, 36.428, 59.421

40, 36.428, 59.421

90, 36.428, 59.421

30, 36.428, 59.421

20, 36.428, 59.421

10, 36.428, 59.421

0, 36.428, 59.421

60, 36.428, 59.421

60, 36.428, 59.421

57, 44.580, 58.536

63, 28.629, 60.336

54, 52.889, 57.608

66, 21.257, 61.282

52, 60.912, 56.487

70, 14.322, 62.259

49, 67.787, 54.847

73, 7.805, 63.246

48, 71.897, 53.440

76, 1.671, 64.071

80, 4.116, 245.453

83, 9.596, 246.410

87, 14.803,
247.392

90, 17.385,
239.131

Harmonies

Complementary

The Complementary color scheme is a pair of colors which are on the opposite of each other on the color wheel.



60, 36.428, 59.421



60, 28.326, 254.011

Rectangle

The Rectangle color scheme consists of four colors that form a rectangle on the color wheel.



60, 36.428, 59.421



60, 36.428, 109.421



60, 36.428, 239.421



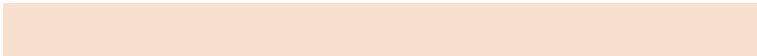
60, 36.428, 289.421

Sweetspot

The Sweet Spot groups the original color and five complimentary colors.



60, 36.427, 59.426



91, 12.115, 62.911



53, 49.744, 343.534



48, 8.300, 62.705



99, 0.012, 296.813



52, 0.007, 296.813

Same Dimension

The Same Dimension uses a secret algorithm to generate beautiful new colors.



60, 36.427, 59.426



72, 55.257, 58.433



73, 47.790, 100.213



38, 3.372, 63.582



40, 62.180, 54.008



5, 10.066, 49.686

Inverse Universe

The Inverse Universe completely reimagines the original color for something new.



60, 28.326, 254.011



72, 40.497, 257.509



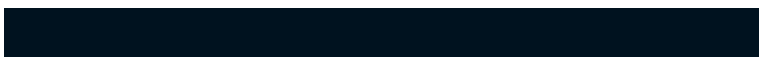
46, 53.860, 294.163



38, 3.254, 245.737



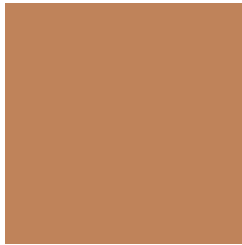
39, 41.318, 272.510



5, 10.525, 259.360

Previews

White Background



This preview shows how the CIELCh color 60, 36.428, 59.421 looks on a white background.

Color Contrast Check

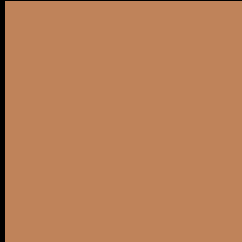
Large Text (above 18pt) WCAG AA ✓ Pass

Any Text WCAG AA × Fail

Large Text (above 18pt) WCAG AAA × Fail

Any Text WCAG AAA × Fail

Black Background



This preview shows how the CIELCh color 60, 36.428, 59.421 looks on a black background.

Color Contrast Check

Large Text (above 18pt) WCAG AA ✓ Pass

Any Text WCAG AA ✓ Pass

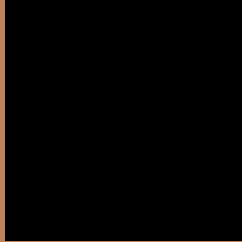
Large Text (above 18pt) WCAG AAA ✓ Pass

Any Text WCAG AAA × Fail

If you want to check with other color combinations, try the [Color Contrast Checker](#).

CIELCh 60, 36.428, 59.421

Background



This preview shows how black text looks on a background with the CIELCh color 60, 36.428, 59.421.



This preview shows how white text looks on a background with the CIELCh color 60, 36.428, 59.421.

Color Blindness Simulation

Color vision deficiency is a very complex topic, and I could not describe the different causes any better than Wikipedia does, so if you want to learn more, you should check out their [article about color blindness](#).

Dichromacy



Original Color

60, 36.428, 59.421

Protanopia

60, 27.788, 96.130

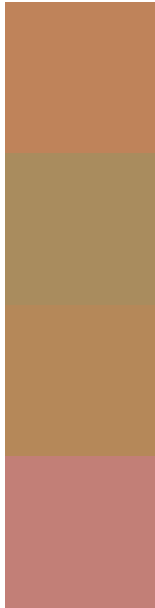
Deuteranopia

60, 32.446, 76.118



Tritanopia
60, 29.111, 11.813

Trichromacy



Original Color
60, 36.428, 59.421

Protanomaly
60, 29.009, 80.800

Deuteranomaly
60, 33.792, 70.191

Tritanomaly
60, 29.176, 31.088

Monochromacy



Original Color
60, 36.428, 59.421

Achromatopsia
60, 0.008, 296.813

Achromatomaly
59, 12.521, 62.211

CSS Examples

Text

The CSS property to change the color of the text to CIELCh 60, 36.428, 59.421 is called "color". The color property can be set on classes, ids or directly on the HTML element.

This example shows how text in the color `rgb(191, 131, 90)` looks like.

```
.text, #text, p{  
    color:rgb(191, 131, 90)  
}
```

If you want to add a text shadow in that color use the text-shadow property, you can generate a text shadow directly with our [CSS Text Shadow Generator](#).

Here you see how black text with a 4 pixel rgb(191, 131, 90) colored shadow looks like.

```
.shadow{ text-shadow: 4px 4px 2px rgb(191, 131, 90) }
```

Border

The CSS property to change the border of an element to CIELCh 60, 36.428, 59.421 is called "border". The border property can be set on classes, ids or directly on the HTML element.

This example shows the color as border, it can be applied via the CSS property "border" or "border-color".

```
.border, #border, table{ border:4px solid rgb(191, 131, 90) }
```

If only the border color should be changed use the property `border-color`.

```
.border{ border-color:rgb(191, 131, 90) }
```

If you want to add a box shadow in that color use:

Here you see how a box with a 4 pixel `rgb(191, 131, 90)` colored shadow looks like.

```
.boxshadow{ -moz-box-shadow:4px 4px 4px  
4px rgb(191, 131, 90); -webkit-box-  
shadow:4px 4px 4px 4px rgb(191, 131, 90);  
box-shadow:4px 4px 4px 4px rgb(191, 131,  
90) }
```

Background

The CSS property to change the background color of an element to CIELCh 60, 36.428, 59.421 is called "background". The background property can be set on classes, ids or directly on the HTML element.

```
.background, #background, body{  
background: rgb(191, 131, 90) }
```

If only the background color should be changed can be used:

```
.background{ background-color: rgb(191,  
131, 90) }
```

This example shows the color as background, it is applied via the CSS property "background".

To optimize and compress your CSS code, you can use our [online CSS compressor and optimizer](#) based on csstidy. If you want to create a linear or radial gradient as background or border, check our [CSS Gradient Generator](#).

Hey! You found this booklet interesting? Support Converting Colors with the new Membership Option!

The pro membership hides all ads, plus gives you double the colors in the color bucket, and more awesome pro features!

[Learn more, Memberships starting at \\$2.50/m!](#)

**Follow me
on Twitter!**

@ConvertingColor