

Converting Colors

CIELCh(60, 37.363, 59.466)

Have a look what the booklet for
CIELCh(60, 37.363, 59.466) contains.

CIELCh(60, 37.198, 59.533)	3
<i>Conversions</i>	4
<i>Details</i>	6
<i>Harmonies</i>	11
<i>Previews</i>	20
<i>Color Blindness Simulation</i>	23
<i>CSS Examples</i>	26

Color

CIELCh(60, 37.198, 59.533)

Conversions

Conversions Part 1

Format	Color
Hex	C08359
RGB	192, 131, 89
RGB Percent	75%, 51%, 35%
CMY	0.2474, 0.4866, 0.6513
CMYK	0.00, 0.32, 0.54, 0.25
HSL	24°, 45%, 55%
HSV	24°, 54%, 75%
XYZ	31.6184, 28.1233, 13.1952
YIQ	144.4510, 49.8380, -0.1300

Conversions

Conversions Part 2

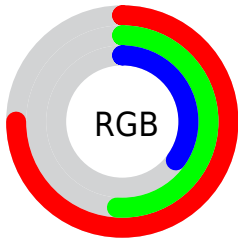
Format	Color
R_{YB}	192, 160, 89
Decimal	12616537
CIE Lab	60.00, 18.86, 32.06
CIE LCh	60, 37.198, 59.533
Yxy	28.1233, 0.4335, 0.3856
Android (android.graphics.Color)	4290806617 (0xFFC08359)
YUV	144.4510, -27.3373, 41.7005
Hunter-Lab	53.0314, 13.6201, 22.3695

Details

The CIELCh color **60, 37.198, 59.533** is a dark color, and the websafe version is hex **CC9966**. The color can be described as middle muted orange. A complement of this color would be **60, 28.851, 254.503**, and the grayscale version is **60, 0.008, 296.813**.

A 20% lighter version of the original color is **80, 37.109, 59.142**, and **40, 37.098, 59.400** is the 20% darker color. If you saturate the color by 10%, you get **57, 45.389, 58.637**, and if you desaturate by 10%, it is **63, 29.347, 60.455**.

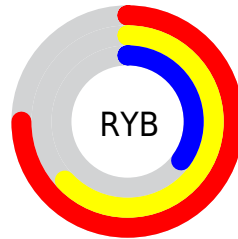
Distribution



Red (75%)

Green (51%)

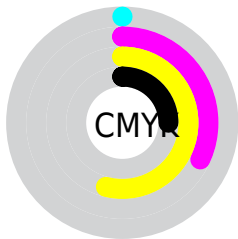
Blue (35%)



Red (75%)

Yellow (63%)

Blue (35%)

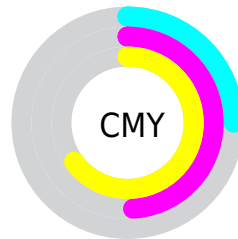


Cyan (0%)

Magenta (32%)

Yellow (54%)

Black (25%)



Cyan (25%)

Magenta (49%)

Yellow (65%)

Brightness & Saturation Gradients

These gradients show how the CIELCh color 60, 37.198, 59.533 changes by changing the brightness by 10 percent. The first figure shows a shift by +10% for each color and the second figure -10%.

Similar to the brightness gradients but the following saturation gradients show a change of the CIELCh color 60, 37.198, 59.533 by changing the saturation by 10% instead.

60, 37.198, 59.533

60, 37.198, 59.533

100, 37.198,
59.533

50, 37.198, 59.533

80, 37.198, 59.533

40, 37.198, 59.533

90, 37.198, 59.533

30, 37.198, 59.533

20, 37.198, 59.533

10, 37.198, 59.533

0, 37.198, 59.533

60, 37.198, 59.533

60, 37.198, 59.533

57, 45.389, 58.637

63, 29.347, 60.455

54, 53.709, 57.688

66, 21.920, 61.406

52, 61.682, 56.524

70, 14.929, 62.389

49, 68.407, 54.804

73, 8.356, 63.383

48, 72.028, 53.556

76, 2.171, 64.268

80, 3.665, 245.610

83, 9.191, 246.561

87, 14.442,
247.547

90, 17.240,
240.043

Harmonies

Complementary

The Complementary color scheme is a pair of colors which are on the opposite of each other on the color wheel.



60, 37.198, 59.533



60, 28.851, 254.503

Rectangle

The Rectangle color scheme consists of four colors that form a rectangle on the color wheel.



60, 37.198, 59.533



60, 37.198, 109.533



60, 37.198, 239.533



60, 37.198, 289.533

Sweetspot

The Sweet Spot groups the original color and five complimentary colors.



60, 37.197, 59.538



91, 12.223, 63.126



52, 50.576, 343.640



48, 8.304, 62.920



99, 0.012, 296.813



52, 0.007, 296.813

Same Dimension

The Same Dimension uses a secret algorithm to generate beautiful new colors.



60, 37.197, 59.538



73, 56.739, 58.513



73, 48.621, 100.127



39, 3.449, 63.800



40, 62.880, 54.083



6, 11.525, 48.451

Inverse Universe

The Inverse Universe completely reimagines the original color for something new.



60, 28.851, 254.503



72, 41.467, 258.133



45, 54.955, 294.353



39, 3.329, 245.969



39, 42.008, 272.835



5, 11.614, 260.233

Previews

White Background



This preview shows how the CIELCh color 60, 37.198, 59.533 looks on a white background.

Color Contrast Check

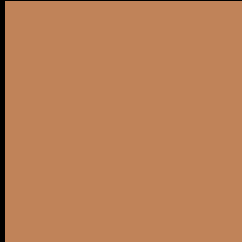
Large Text (above 18pt) WCAG AA ✓ Pass

Any Text WCAG AA × Fail

Large Text (above 18pt) WCAG AAA × Fail

Any Text WCAG AAA × Fail

Black Background



This preview shows how the CIELCh color 60, 37.198, 59.533 looks on a black background.

Color Contrast Check

Large Text (above 18pt) WCAG AA ✓ Pass

Any Text WCAG AA ✓ Pass

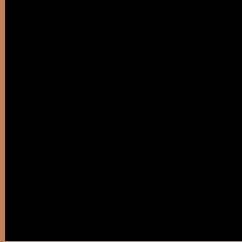
Large Text (above 18pt) WCAG AAA ✓ Pass

Any Text WCAG AAA × Fail

If you want to check with other color combinations, try the [Color Contrast Checker](#).

CIELCh 60, 37.198, 59.533

Background



This preview shows how black text looks on a background with the CIELCh color 60, 37.198, 59.533.



This preview shows how white text looks on a background with the CIELCh color 60, 37.198, 59.533.

Color Blindness Simulation

Color vision deficiency is a very complex topic, and I could not describe the different causes any better than Wikipedia does, so if you want to learn more, you should check out their [article about color blindness](#).

Dichromacy



Original Color

60, 37.198, 59.533

Protanopia

60, 28.945, 95.516

Deuteranopia

60, 33.663, 76.222



Tritanopia
60, 29.519, 12.022

Trichromacy



Original Color
60, 37.198, 59.533

Protanomaly
60, 30.227, 80.771

Deuteranomaly
60, 34.444, 69.009

Tritanomaly
60, 29.790, 32.010

Monochromacy



Original Color
60, 37.198, 59.533

Achromatopsia
60, 0.008, 296.813

Achromatomaly
59, 12.521, 62.211

CSS Examples

Text

The CSS property to change the color of the text to CIELCh 60, 37.198, 59.533 is called "color". The color property can be set on classes, ids or directly on the HTML element.

This example shows how text in the color `rgb(192, 131, 89)` looks like.

```
.text, #text, p{  
    color:rgb(192, 131, 89)  
}
```

If you want to add a text shadow in that color use the text-shadow property, you can generate a text shadow directly with our [CSS Text Shadow Generator](#).

Here you see how black text with a 4 pixel rgb(192, 131, 89) colored shadow looks like.

```
.shadow{ text-shadow: 4px 4px 2px rgb(192, 131, 89) }
```

Border

The CSS property to change the border of an element to CIELCh 60, 37.198, 59.533 is called "border". The border property can be set on classes, ids or directly on the HTML element.

This example shows the color as border, it can be applied via the CSS property "border" or "border-color".

```
.border, #border, table{ border:4px solid rgb(192, 131, 89) }
```

If only the border color should be changed use the property `border-color`.

```
.border{ border-color:rgb(192, 131, 89) }
```

If you want to add a box shadow in that color use:

Here you see how a box with a 4 pixel `rgb(192, 131, 89)` colored shadow looks like.

```
.boxshadow{ -moz-box-shadow:4px 4px 4px  
4px rgb(192, 131, 89); -webkit-box-  
shadow:4px 4px 4px 4px rgb(192, 131, 89);  
box-shadow:4px 4px 4px 4px rgb(192, 131,  
89) }
```

Background

The CSS property to change the background color of an element to CIELCh 60, 37.198, 59.533 is called "background". The background property can be set on classes, ids or directly on the HTML element.

```
.background, #background, body{  
background: rgb(192, 131, 89) }
```

If only the background color should be changed can be used:

```
.background{ background-color: rgb(192,  
131, 89) }
```

This example shows the color as background, it is applied via the CSS property "background".

To optimize and compress your CSS code, you can use our [online CSS compressor and optimizer](#) based on csstidy. If you want to create a linear or radial gradient as background or border, check our [CSS Gradient Generator](#).

Hey! You found this booklet interesting? Support Converting Colors with the new Membership Option!

The pro membership hides all ads, plus gives you double the colors in the color bucket, and more awesome pro features!

[Learn more, Memberships starting at \\$2.50/m!](#)

**Follow me
on Twitter!**

@ConvertingColor